



Live video direction in environments where time is of the essence. 4K compatible Live Switcher

AV-HS7300

Key Features

Maximum of 72 inputs*1 and 42 outputs*2 to easily handle large-scale video production

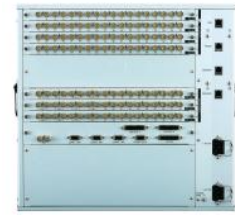
4K video format support*3 with 4 x 3G-SDI

8ch (stills and clips, 4ch each) video memory for support of various video production

All inputs equipped with frame synchronizer, color corrector and frame delay

Compact 9 RU mainframe equipped with redundant power supply *1: SDI input extension rear board (AV-HS70M1, sold separately) required. *3: ME extension video processing board required (AV-HS70M4, sold separately). *2: SDI output extension rear board (AV-HS70M2, sold separately) required.





AV-HS7300

<https://eu.connect.panasonic.com/ae/en/products/broadcast-proav/av-hs7300>

Power Supply	AC 100 V to 240 V, 50 Hz/60 Hz
Power Consumption	460 W
Ambient Operating Temperature	0°C to 40°C (32°F to 104°F)
Humidity	10% to 90% (no condensation)
Dimensions (WxHxD)	482 mm x 399 mm x 420 mm (excluding protrusions)
	9RU
Weight	Approx. 37 kg (when full option is installed, excluding accessories)
Video Terminal	
SDI IN 1 to SDI IN 72 Terminals	During Standard modeStandard 36 lines · Connector: BNC x 36Maximum 72 lines · Connector: BNC x 72 HD-SDIHD serial digital, SMPTE292M (BTA S-004) standard compliant · 0.8 V [p-p] ± 10% (75 Ω) · Automatic equalizer 100 m (when 1.5 Gbps/5C-FB cable is used) 3G-SDI3G serial digital, SMPTE424M standard compliant · 0.8 V [p-p] ± 10% (75 Ω) · Automatic equalizer 100 m (when 3 Gbps/5C-FB cable is used) · 3G-SDI Level A, 3G-SDI Level B During 4K modeStandard 9 lines · Connector: BNC x 36 (construct one line of 4K signal with four terminals)Maximum 18 lines · Connector: BNC x 72 (construct one line of 4K signal with four terminals) · Can use the 4K signal in SQD format
SDI OUT 1 to SDI OUT 42 Terminals	During Standard modeStandard 14 lines ([SDI OUT 1] to [SDI OUT 4]: Two distribute output, [SDI OUT 5] to [SDI OUT 14]: One distribute output) · Connector: BNC x 18Maximum 42 lines ([SDI OUT 1] to [SDI OUT 4], [SDI OUT 15] to [SDI OUT 18], [SDI OUT 29] to [SDI OUT 32]:Two distribute output, other: One distribute output) · Connector: BNC x 54 · ME1 PGM, ME1 PVW, ME1 CLN, ME1 KEYPVW, ME2 PGM, ME2 PVW, ME2 CLN, ME2 KEYPVW, ME3 PGM, ME3 PVW, ME3 CLN, ME3 KEYPVW, ME4 PGM, ME4 PVW, ME4 CLN, ME4 KEYPVW, DSKPGM1, DSKPGM2, DSKPVW1, DSKPVW2, DSK1 CLN, DSK2 CLN, DSK3 CLN, DSK4 CLN, SEL KEYPVW, MV1 to MV4, AUX1 to AUX24 can be assigned. HD-SDIHD serial digital, SMPTE292M (BTA S-004) standard compliant · Output level: 0.8 V [p-p] ± 10% · Rise time: Less than 270 ps (HD) · Fall time: Less than 270 ps (HD) · Difference between rise time and fall time: 100 ps or less (HD) · Alignment jitter: 0.2 UI (130 ps) or less (HD) · Timing jitter: 1.0 UI or less (HD) · Eye aperture ratio: 90% or more · DC offset: 0 ± 0.5 V 3G-SDI3G serial digital, SMPTE424M standard compliant · Output level: 0.8 V [p-p] ± 10% · Rise time: 135 ps or less · Fall time: 135 ps or less · Difference between rise time and fall time: 50 ps or less · Alignment jitter: 0.3 UI or less · Timing jitter: 2.0 UI or less · DC offset: 0 ± 0.5 V · 3G-SDI Level B During 4K modeStandard 3 lines (construct one line of 4K signal with four terminals) · [SDI OUT 1] to [SDI OUT 4]: One line x two distribute output, [SDI OUT 5] to [SDI OUT 12]: Two lines x one distribute outputMaximum 9 lines (construct one line of 4K signal with four terminals) · [SDI OUT 1] to [SDI OUT 4]: One line x two distribute output, [SDI OUT 5] to [SDI OUT 12]: Two lines x one distribute output · [SDI OUT 15] to [SDI OUT 18]: One line x two distribute output, [SDI OUT 19] to [SDI OUT 26]: Two lines x one distribute output · [SDI OUT 29] to [SDI OUT 32]: One line x two distribute output, [SDI OUT 33] to [SDI OUT 40]: Two lines x one distribute output · The 4K signal in SQD format can be used. · ME1 PGM, ME1 PVW, ME1 CLN, ME1 KEYPVW, ME2 PGM, ME2 PVW, ME2 CLN, ME2 KEYPVW, DSKPGM1, DSKPGM2, DSKPVW1, DSKPVW2, DSK1 CLN, DSK2 CLN, SEL KEYPVW, MV1, and AUX1 to AUX6 can be assigned.
Signal Formats	1080/59.94p, 1080/59.94i, 1080/50p, 1080/50i, 1080/29.97PsF, 1080/25PsF, 1080/23.98PsF, 2160/59.94p, 2160/50p
Signal Processing	Y:P B:PR 4:2:2 10 bit
	R:G:B 4:4:4 8 bit
ME Number	4ME (Standard Mode) / 1.5ME (4K Mode)
Synchronous Terminal	
REF Terminal	In Genlock mode: Black burst or Tri-level Sync input signals (with loop-through) · If the loop-through output is not used, provide a 75 Ω termination. · Connector: BNC · Same field frequencies as those of the system formats supported · Only the Genlock mode is supported for 1080/23.98PsF format · In the 1080/23.98PsF format, black burst signals with 10 Field ID (SMPTE318M standard compliant) or Tri-level Sync signals supported
Video Delay Time	During Standard mode1 line (H) When the frame synchronizer is set to [Off]2 field (V) When the frame synchronizer is set to [On] · Maximum delay of 1 frame is added when passing through PinP, DVE, MultiView, or DVI-IN.
Control Terminal	
LAN Terminal	Compatible with 100Base-TX and AUTO-MDIX (For IP control) · Connection cable: LAN cable (CAT5E), max. 100 m, STP (Shielded Twisted Pair) cable recommended · Connector: RJ-45
PANEL Terminal	Compatible with 100Base-TX and AUTO-MDIX (For Control Panel AV-HS60C2/AV-HS60C4 connection) · Connection cable (supplied with AV-HS60C2/AV-HS60C4): LAN cable (CAT5E), straight cable, STP (Shielded Twisted Pair), 10 m · Connector: RJ-45
COM1(M)/COM2(M)/COM3(M) Terminals	RS-422 control terminalFor master connection for controlling external devices · Connector: D-sub 9-pin (female) x 3, inch screw
COM4 (M/S) Terminal	RS-422 control terminalFor master/slave connection for controlling external devices · Connector: D-sub 9-pin (female), inch screw · Switchable between master connection and slave connection by the menu

GPI In Terminal	GPI IN: 18 inputs, general-purpose, photocoupler sensing ALARM OUT: 1 output, open collector output (negative logic) · Connector: D-sub 25-pin (female), inch screw
GPI OUT1/GPI OUT2 terminal	GPI OUT: 48 outputs, selected from general purpose, tally Open collector output · Connector: D-sub 25-pin (female) x 2, inch screw
Accessories	AC cable: 4 cables
