

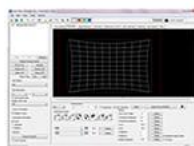
## Auto Screen Adjustment Upgrade Kit

# ET-CUK10\_CUK10P

Expands Geometry Manager Pro software allowing automatic adjustment of multi-screen or curved-screen projections.

### Key Features

Edge blending, colour-matching, brightness control, and geometry adjustment are achieved easily and quickly using with external compatible cameras and Geometry Manager Pro software.



ET-CUK10\_CUK10P

<https://eu.connect.panasonic.com/dk/en/products/projectors/et-cuk10cuk10p>

<b>Type</b>	Auto Screen Adjustment Upgrade Kit
<b>Connection</b>	LAN
<b>Requirement</b>	Geometry Manager Pro Software ver.2.0 or later Projector's Firmware version PT-DZ21K/DS20K: ver.4.0 or later PT-DZ13K/DZ10K/DZ870: ver.3.0 or later
<b>Lens</b>	D5200/D5300 (Nikon)*2 w/ Normal Zoom: AF-S DX NIKKOR 18-55 mm f/3.5-5.6G VR Wide Zoom: AF-S DX NIKKOR 10-24 mm f/3.5-4.5G ED
<b>Activation</b>	Get the Activation code through 'PASS' System (One Activation code per projector)
<b>OS</b>	Windows® 7: Ultimate (32 bit/64 bit), Professional (32 bit/64 bit), Home Premium (32 bit/64 bit) Windows® 8: Windows 8 Pro (32 bit/64 bit), Windows 8 (32 bit/64 bit) Windows® 8.1: Windows 8.1 Pro (32 bit/64 bit), Windows 8.1 (32 bit/64 bit) • Compatible with English, Japanese or Chinese language versions of the above operating systems. • Compatible with versions up to Microsoft Windows 7 SP1. • For a 64bit OS, this application runs on WOW64.
<b>CPU</b>	Clock speed of 1 GHz or higher
<b>RAM</b>	2 GB or more
<b>Interface</b>	• LAN terminal for wired LAN (100Base-TX/1000Base-T) • USB 2.0-compatible port or higher
<b>Display</b>	Display resolution shall be XGA (1,024 x 768) or higher, and the number of colors on the screen must be more than High Color (16 bits).