



The perfect dry etching equipment for silicon and compound semiconductors.

APX300 Dry Etcher

The APX300 (option S) Dry Etcher is the perfect dry etching equipment for silicon and compound semiconductors. It incorporates a multi-wafer direct cooling system for optimal control of wafer temperature, as well as MSC-ICP (Multi-Spiral Coil type ICP) and BM-ICP (Beamed-type ICP) plasma sources to generate high density plasma. In this way, it achieves a uniform etching profile in a very short timeframe. Building upon the single wafer process chamber of the previous model (Panasonic E620), combined with enhanced process options and two different handling systems, the APX300 (option S) is extremely fast and covers a wide range of process demands. Features and benefits of Panasonic's APX300 (option S) Dry Etcher

The Panasonic APX300 (option S) Dry Etcher can process wafers such as power devices, SAW filters, communication devices, MEMS sensors and many more. The APX300 (option S) is the successor to the previous best-selling Panasonic E620 and utilizes the same single wafer process chamber. Two plasma sources are available: MSC-ICP (Multi-Spiral Coil type ICP) and BM-ICP (Beamed-type ICP). MSC-ICP is Panasonic's latest technology, developed to realize highly accurate processing. BM-ICP offers higher electron density and achieves faster processing, covering a wide range of process demands. In addition,

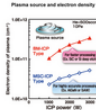
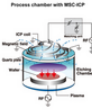
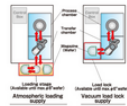
Key Features

Two plasma sources available

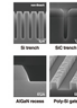
Atmospheric Loading Supply

Vacuum Load Lock Supply

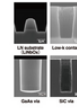
Covers wide range of process demands



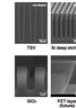
Process devices (Si, SiC, GaN)



MEMS - Communication devices



MEMS - Sensors



APX300 Dry Etcher

Factory Solutions Business Division - Europe,
Panasonic Connect Europe GmbH,
Caroline-Herschel-Str. 100,
85521 Ottobrunn,
Germany.

<https://eu.connect.panasonic.com/en/microelectronics/apx300-dry-etcher>

Dimensions (mm)	[Load lock wafer Handling] W 1350 x D 2230 x H 2000 (Exclude touch panel, operation section and signal tower)
	[Load lock wafer Handling] W 1375 x D 2600 x H 2000 (Exclude touch panel, operation section and signal tower)
Plasma source	ICP Plasma
Model-No. (Model Name)	NM-EFE3AA-S
Process gas	Standard 4 lines (Maximum 6 Lines: Chlorinated Gas, Fluoride Gas, Ar, O ₂ , He, etc.)
Wafer size	Ø100mm / 150mm wafer with orientation flat Ø200mm wafer with notch
	*Please consult, if different size of wafer will be required.
Mass (Weight)	2000kg (Differs depending on machine configuration)
Power Source	3-phase AC 200 / 208 / 220 / 230 / 240 ±10 V, 50 / 60Hz, 21.00kVA
	*3-phase electricity has two kinds of lineage. Figure shows total.
Pneumatic Source	0.5MPa to 0.7MPa, 250L/min (A.N.R.)
N₂ Source	0.1MPa to 0.2MPa, 50L/min (A.N.R.)