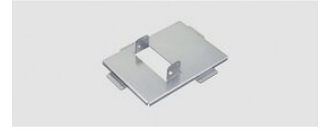


## **ET-PKL420B**

The Bracket assembly is designed for compatibility with PT-LB360, PT-LB330, PT-LW330, PT-LB280 projectors.



ET-PKL420B

<https://eu.connect.panasonic.com/fi/en/products/projectors/et-pkl420b>

<b>Weight</b>	Approx. 0.7kg (1.54lbs)
<b>Dimension</b>	Width : 276mm (10-7/8")
	Height: 54.5mm (2-5/32")
	Depth : 205mm (8-1/16")
<b>Adjustment range</b>	Horizontal tilt correction angle: $\pm 10^{\circ}$