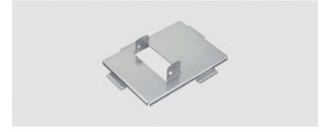


ET-PKL420B

The Bracket assembly is designed for compatibility with PT-LB360, PT-LB330, PT-LW330, PT-LB280 projectors.



ET-PKL420B

<https://eu.connect.panasonic.com/pl/en/products/projectors/et-pkl420b>

Weight	Approx. 0.7kg (1.54lbs)
Dimension	Width : 276mm (10-7/8")
	Height: 54.5mm (2-5/32")
	Depth : 205mm (8-1/16")
Adjustment range	Horizontal tilt correction angle: $\pm 10^\circ$