



The Freedom to Collaborate

TECHNOLOGY TO BRING PEOPLE TOGETHER

Panasonic
CONNECT

The Freedom to Collaborate

TECHNOLOGY TO BRING PEOPLE TOGETHER

The ability to effectively collaborate is the foundation for business success. It sparks our imagination and we become more creative and problem solving.

The interaction and feeling part of a team is important for workforce satisfaction but research shows that it also makes commercial sense - with companies that promote collaborative working five times as likely to be high performing.



CREATING AN INTUITIVE DIGITAL WORKSPACE THAT SUPPORTS HYBRID WORKING AND DELIVERS MEETING EQUITY FOR THOSE PARTICIPATING REMOTELY IS GOING TO BE ESSENTIAL FOR SUCCESS.



80% OF COMPANIES

SAY THAT **DIGITAL WORKSPACES** WILL BE ESSENTIAL TO THEIR FUTURE SUCCESS AND THAT IS BEING BACKED-UP BY INVESTMENT.



58% OF WORKERS

REPORT **TECHNICAL ISSUES** IN THE AREA OF VIDEO MEETINGS.

A woman with voluminous curly brown hair is smiling and looking towards the left. She is wearing a white blazer and has her hand near her chin. In the background, a man with a beard is smiling and looking towards her. They are in a meeting room with a whiteboard and a plant visible. A black vertical device, the PressIT360, is on the table in front of her.

FREEDOM TO MEET

Making hybrid meetings more natural

PressIT360

Joining a meeting remotely can feel like we are not really participating. On the edge of the conversation, not being able to hear or see people clearly and finding it difficult to contribute without interrupting. PressIT360 delivers meeting equity with its next generation camera speakerphone designed to make hybrid meetings more natural for all - especially those participating remotely.



○ Like being in the room

Never struggle to see and hear participants clearly again. Four cameras enable horizontal 360-degree video to ensure everyone can be seen in excellent picture quality. Select the best camera layout from a variety of video views and use Panasonic's unique facial and speech recognition technology to automatically focus on those speaking.

○ Never miss a word

To ensure every word can be heard by all participants, the device has a state-of-the-art speaker with background and keyboard noise suppression. Its seven integrated microphones have a voice recognition radius of up to 5m – meaning even in larger rooms everyone can still be clearly heard.

○ Just connect and go

The sleek and stylish tower design (285mm high x 64mm wide) sits comfortably in any meeting room. There is no fuss or cable confusion. Just connect to a laptop with a USB Type-C cable and start your meeting. There is no need to waste time setting-up the camera, microphone or speakers.

○ Control at the touch of a button

Designed to allow participants to control the meeting at the touch of a button, with intuitive volume and video view controls all located on the base of the device pedestal. The LED ring on the device also quickly shows operational status.

○ Choose how to use

Easy to pick-up and carry in one hand, weighing under 1 kilo, flexibility is built in. Just carry the device to your meeting space and you are ready to go. For those that want a more permanent installation, it can easily be attached to a tripod or fixed to a meeting room using the security slot.

○ Customising the experience

Want to further customise your experience? Use the PC app to adjust camera positions, change the image quality and update firmware as required.

FREEDOM TO COLLABORATE AND SHARE

Discover our wider range of collaboration solutions, designed to release your creativity and increase productivity.

PressIT

A stress-free wireless presentation system for business that gets you sharing and collaborating at the press of a button.



Plug and play presentation

No wires, no software installation or complex set-up process. Just bring your own device, connect and click to begin.

Simple collaboration

Capable of connecting 32 devices and having 4 presenters at the same time, fast and effective teamwork couldn't be simpler.

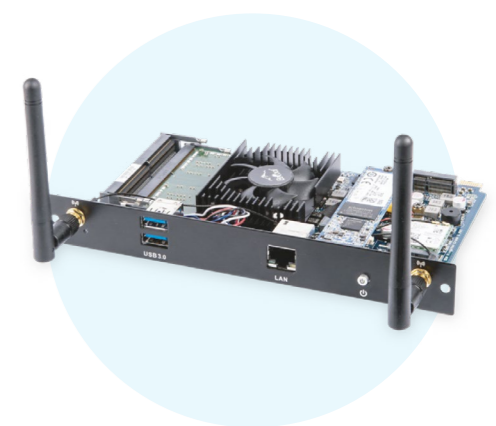
Crystal clear images

Professional quality images and video are instantly brought to life with HD resolution and seamless video playback with zero latency – all at the press of a button.



Wolfvision Cynap Pure

A fully integrated wireless presentation system using the Intel Smart Display Module (SDM) in the Panasonic display for a clean look meeting room experience, without cables or set-top boxes.



Simple and fast screen sharing

Just Bring Your Own Device and present. Compatible with all operating systems – supporting AirPlay®, Miracast™ and Chromecast™ screen mirroring protocols.

No distractions

In a professional looking meeting space, the presenter and audience can just concentrate on the presentation without having to worry about dongles, set-top boxes or messy cables.

4K with up to 4 Windows on Screens

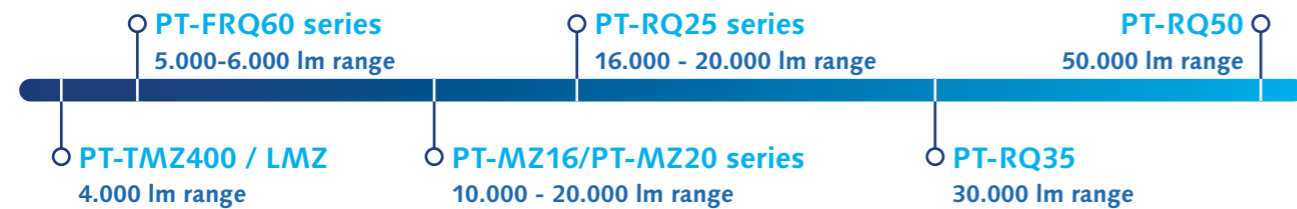
Your presentations will look sharp with 4K UHD Output resolution. Content can be shared with up to 4 windows on screen using any smartphone, laptop or tablet without the need for apps or extra software.

Projectors

Whether it's large auditoriums and events, conference meeting rooms or huddle spaces, Panasonic has the perfect projector to meet your collaborative needs – choose from 4,000-50,000 lumen brightness with up to 4K resolution.

○ Straight to the big screen

Panasonic PressIT presentation and hybrid meeting solutions are designed to work simply with all Panasonic projectors. Easily share your presentations and ideas on a big screen or in an auditorium for those larger meetings and conferences.



PROJECTORS LINE-UP

PORTABLE AND SHORT THROW PROJECTORS



Huddle spaces

1-CHIP DLP™ AND LCD PROJECTORS



Meeting room

1-CHIP DLP™, 3-CHIP DLP™, LCD PROJECTORS



Corporate meetings

1-CHIP DLP™ PROJECTORS



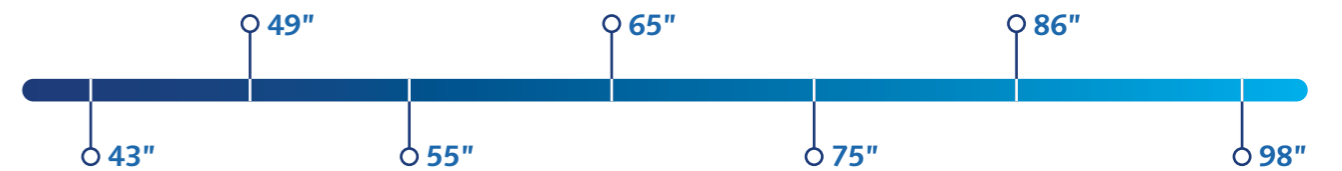
Immersive training

Displays

Panasonic Professional Displays deliver crystal clear 4K images with unrivalled brightness and reliability, in a range from 43-98 inches. Ensure collaborations are truly interactive with Panasonic multi-touch displays to meet the needs of any huddle space, meeting room or auditorium.

○ Unique functionality

With built-in functionality to improve your collaborative experience, Panasonic displays can include a future-proofed Intel SDM slot for integrated wireless presentation, as well as one cable USB-C connection, that can be used, for example, to connect to a camera for fast hybrid meeting starts. Mouse annotation functionality can also enable quick and easy collaboration with annotations on screen.



DISPLAYS LINE-UP

HIGH BRIGHTNESS SQ1H



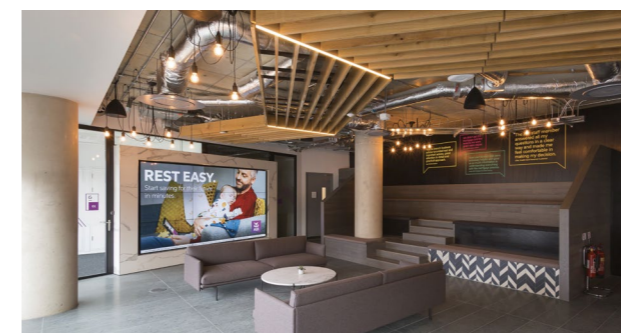
Digital Signage

STANDARD ENTRY SQ1, SQE1, EQ2 CQE1



Presentation meeting room

VIDEO WALL VF2, VF2H, Lfv9



MULTI-TOUCH DISPLAYS SQ1-IG, SQE1-IG, SQ1-IR, CQE1-IR



Collaborative meeting room

FROM BIG PICTURE TO ALL THE DETAILS

PressIT360

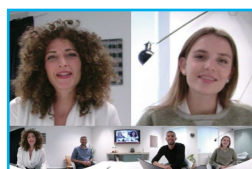
Specifications

Model No.	TY- CSP1
Product name	360 degree camera speakerphone
Imaging element	1/2.7"5MP CMOS
Field of view	360(H)×60(V)
F number of the lens	2.5
Lens TTL	14.7 mm
Distortion	-14.9 %
Microphone	MEMS Microphone array
Number of microphones	7
Beam forming	Supported
Microphone sensitivity	-35dBFS
S/N ratio	68.75dBA
Speaker out	1.5 W(When supplying power from USB Type-C) or 3 W(When AC adaptor is connected)
Connection terminals	USB Type-C(USB2.0), DC plug 12 V/2 A
Power supply	USB Type-C(5 V/3 A) or AC adaptor DC 12 V/2 A
Power consumption (when outputting video)	11W
Dimensions (Diameter x Height)	φ64 mm x 285 mm / 2.52" x 11.23" (Operation baseφ100 mm / 3.94")
Mass	950g/2.1 lbs.
Security slot	Noble Wedge (with mounting surfaces of 11 mm φ or less.)
Operating condition	Temperature: 0 °C to 40 °C / 32 °F to 104 °F Humidity: 20% to 80% (no condensation)
Usable altitude range	0 m to 2800 m / 0 ft to 9186 ft

CHOOSE FROM A VARIETY OF VIDEO DISPLAY MODES TO MATCH YOUR CONFERENCE ENVIRONMENT

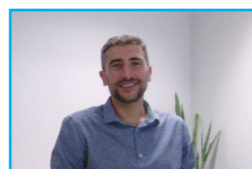
Detects voices and human figures to automatically focus on the person speaking

Dual View



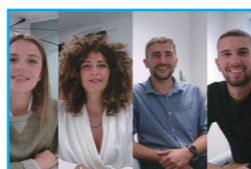
360-degree view of the room and focus on up to two people speaking.

Single View



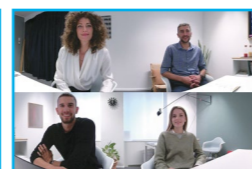
Focus on the person speaking in the conference room.

Multi View



Focused display of up to four people speaking. A green bar is displayed above the speaker screen.

Surround View



360-degree overall display divided to two 180-degree screens.

Stable View



Displays images with a fixed position as a Web camera.

Focus on the person speaking is automatically optimized according to the volume of speech and the length of the utterance. Focus may be delayed or not performed depending on the situation.

PressIT

Specifications



	Basic Set		Receiver	Receiver (Board)	Transmitter (HDMI/USB)		Transmitter (USB-C)	
Model no.	TY-WPS1	TY-WPSC1	TY-WPR1	TY-SB01WP	TY-WP2B1	TY-WPB1	TY-WP2BC1	TY-WPBC1
Product details	1 Receiver (Box) x 1 3 Transmitter (HDMI/USB) x 2 5 Transmitter case x 1	1 Receiver (Box) x 1 4 Transmitter (USB-C) x 2 5 Transmitter case x 1	1 Receiver (Box) x 1	2 Receiver (Board) x 1	3 Transmitter (HDMI/USB) x 2 5 Transmitter case x 1	3 Transmitter (HDMI/USB) x 1	4 Transmitter (USB-C) x 2 5 Transmitter case x 1	4 Transmitter (USB-C) x 1

¹ Compatible display: SQ1H series, SQ1 series, SQE1 series, EQ2 series

² Compatible with image output from alternate mode compatible devices and USB-C ports

PRODUCT	Receiver (Box) TY-WPR1	Receiver (Board) TY-SB01WP	Transmitter (HDMI/USB) TY-WPB1	Transmitter (USB-C) TY-WPBC1
Max. resolution/ Framerate	1920x1080/60p (max.), 3840x2160/30p (max.)		1920x1080/60p (max.)	
Numbers of simultaneous connections	32		-	
Numbers of sources simultaneous on screen	4		-	
Data Rate	Wired	10/100/1000 (Mbps)		-
	Wireless	867 Mbps (max.)	433 Mbps (max.)	
Frequency band	5 GHz band (5,150 MHz - 5,250 MHz 36 40 44 48 Channel)			
Wireless Communication Standard	IEEE802.11/a/n/ac		IEEE802.11ac	
Security	WPA/WPA2			
Reachable distance (Max distance between transmitter and receiver)	30 m (When the line of sight/signal conditions are good)			
Connection terminal	HDMI/USB-A (female)/RJ45 (LAN)		HDMI/USB-A (female)/USB-A	USB-A(female)/USB-C(male)
Power	DC 5 V/2 A	12 V/0.9 A (Display power supply)	DC 5 V/0.9 A	
Power consumption (During image display)	10 W		4.5W	
Environment	Operating	Temperature: 0 °C to 35 °C (32 °F to 95 °F) Humidity: 20% to 80% (No condensation)	Temperature: 0 °C to 55 °C (32 °F to 131 °F) Humidity: 20% to 80% (No condensation)	Temperature: 0 °C to 35 °C (32 °F to 95 °F) Humidity: 20% to 80% (No condensation)
	Storage	Temperature: -20 °C to 60 °C (-4 °F to 140 °F)/ Humidity: 20% to 80% (No condensation)		
Dimensions (W x H x D)	120 x 26 x 81 mm (4.71" x 1.03" x 3.19") (Excluding antenna)	82 x 25 x 122 mm (3.22" x 0.99" x 4.78") (Excluding antenna)	51 x 21 x 73 mm (2.0" x 0.8" x 2.86") (Excluding cables)	51 x 26 x 73 mm (2.0" x 1.0" x 2.86") (Excluding cable)
Weight	Approx. 181 g / 0.4 lbs	Approx. 125 g / 0.3 lbs	Approx. 110 g / 0.3 lbs	Approx. 110 g / 0.3 lbs

Wolfvision Cynap Pure

Specifications

FEATURES	
Operating system	Linux
Output resolutions	2160p60, 2160p30, 1080p60, 1080p30
Wireless device mirroring	Yes
Supported mirroring protocols	AirPlay, Miracast (Peer-to-Peer and MICE) Chromecast, vSolution Cast
Supported device operating systems for mirroring	iOS, iPadOS, Android, Windows 8.1 and 10, macOS, Chrome OS
Supported apps / software	vSolution App, vSolution Cast, vSolution Link Pro
Built-in whiteboard	Yes
Built-in Digital Signage Player	Yes
Touchback functionality	Yes, for Windows devices (Miracast & vSolution Cast)
Max. no. of devices simultaneously displaying material on-screen	4
Protected Mode / Open Mode	Yes (via room control system)
Dynamic on-screen arrangement	Yes
Customizable background image & screensaver	Yes

CONNECTIVITY	
Video output	Internal
USB ports	USB 3.0 x2
Bluetooth device discovery	Yes
LAN ports	1x 1 GigE
WLAN standards	802.11 ac/a/b/g/n (2.4 and 5GHz) up to 867 Mbps
Network protocols	TCP/IP, HTTP, HTTPS, SNTP/NTP, SSL, SSH, UDP
IP configuration	Static (IP address, Subnet mask, Default gateway, DNS server), Proxy, Interface priority
Security authentication for LAN	IEEE 802.1X
Security encryption for WLAN	WEP, WPA2, WPA2 Enterprise or IEEE 802.1X
RMS encryption	Yes
Audio	Internal or USB

OTHERS	
External controlling	Multi-touch display, web interface, room control system, USB keyboard & mouse, optional remote control
Dimensions (L x W x H)	175 x 100 x 20 mm (Intel SDM-L Standard)
Optional accessories	Optional remote control
Free firmware updates included	Yes
Limited warranty	3 years

Multi-touch Displays

Specifications

InGlass™ Technology	
SQ1-IG TH-86SQ1-IG 500cd/m² TH-75SQ1-IG 500cd/m² TH-65SQ1-IG 500cd/m² TH-55SQ1-IG 500cd/m²	SQE1-IG TH-86SQE1-IG 500cd/m² TH-75SQE1-IG 500cd/m² TH-65SQE1-IG 500cd/m² TH-55SQE1-IG 500cd/m²

*Actual Resolution: 3840 x 2160p

Infrared Technology	
SQE1-IR TH-86SQE1-IR 500cd/m² TH-75SQE1-IR 500cd/m² TH-65SQE1-IR 500cd/m² TH-55SQE1-IR 500cd/m²	CQE1-IR TH-86CQE1-IR 400cd/m² TH-75CQE1-IR 400cd/m² TH-65CQE1-IR 400cd/m² TH-55CQE1-IR 400cd/m²

*Actual Resolution: 3840 x 2160p

	InGlass™ Technology	Infrared Technology
Operating	Accuracy: Ultra-precise	★★★ (<1 mm)
	Finger, pen, hand eraser	★★★
	Palm rejection	★★★
	Speed	★★★ (6,7 ms)
	Simultaneous touch points	★★★ (40 points)
	Sunlight: Usable in bright sunlight	★★★

	InGlass™ Technology	Infrared Technology
Durability & Maintenance	Robustness	★★★
	Intensive Use	★★★
	Usable in Dusty & Dirty environment	★★★
	Cleanable Surface	★★★
	Frame Size & Design	★★★

Sizes	InGlass™ Technology	Infrared Technology
Sizes available by Panasonic	★★★ (55" to 86")	★★★ (55" to 86")

	InGlass™ Technology	Infrared Technology
Cost / Performance	Corporate presentation	★★★
	Corporate digital signage	★★★

Bring your people together

Panasonic
CONNECT

Find out more about Panasonic's growing range of collaboration solutions designed for the new way of working.



Visit https://info.business.panasonic.eu/Collaboration_Brochure_Contact_Us.html
