

# Panasonic CONNECT



## Professional **DISPLAYS** Line-up Catalog January 2024



Worldwide Olympic and Paralympic Partner



# Panasonic Professional Displays Lineup

High Brightness

## SQ1H Series

1200cd/m<sup>2</sup>  
\*TH-75SQ1H: 1500 cd/m<sup>2</sup>

86" TH-86SQ1HW  
75" TH-75SQ1HW



\*Actual resolution : 3840 x 2160p

Standard

## SQ2H Series

700cd/m<sup>2</sup>

**NEW** 98" TH-98SQ2HW  
**NEW** 86" TH-86SQ2HW  
**NEW** 75" TH-75SQ2HW  
**NEW** 65" TH-65SQ2HW

**NEW** 55" TH-55SQ2HW  
**NEW** 50" TH-50SQ2HW  
**NEW** 43" TH-43SQ2HW



\*Actual resolution : 3840 x 2160p

## SQE2 Series

500cd/m<sup>2</sup>

98" TH-98SQE2W  
86" TH-86SQE2W  
75" TH-75SQE2W  
65" TH-65SQE2W

55" TH-55SQE2W  
50" TH-50SQE2W  
43" TH-43SQE2W



\*Actual resolution : 3840 x 2160p

Multi-Touch Screen

## CQE2-IR Series

500cd/m<sup>2</sup>

\*TH-86CQE2-IR / 75CQE2-IR: 400 cd/m<sup>2</sup>

**NEW** 86" TH-86CQE2-IR  
**NEW** 75" TH-75CQE2-IR  
**NEW** 65" TH-65CQE2-IR  
**NEW** 55" TH-55CQE2-IR



\*Actual resolution : 3840 x 2160p

Entry

## EQ2 Series

500cd/m<sup>2</sup>

86" TH-86EQ2W  
75" TH-75EQ2W

65" TH-65EQ2W  
55" TH-55EQ2W

50" TH-50EQ2W  
43" TH-43EQ2W



\*Actual resolution : 3840 x 2160p



## CQE2 Series

500cd/m<sup>2</sup>

\*TH-86CQE2/75CQE2: 400 cd/m<sup>2</sup>

98" TH-98CQE2  
86" TH-86CQE2

75" TH-75CQE2  
65" TH-65CQE2

55" TH-55CQE2  
50" TH-50CQE2

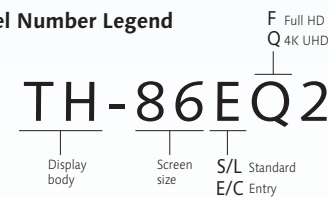
43" TH-43CQE2



\*Actual resolution : (98CQE2 only) 3840 x 2160p



### Model Number Legend



\* The availability varies depending on model.

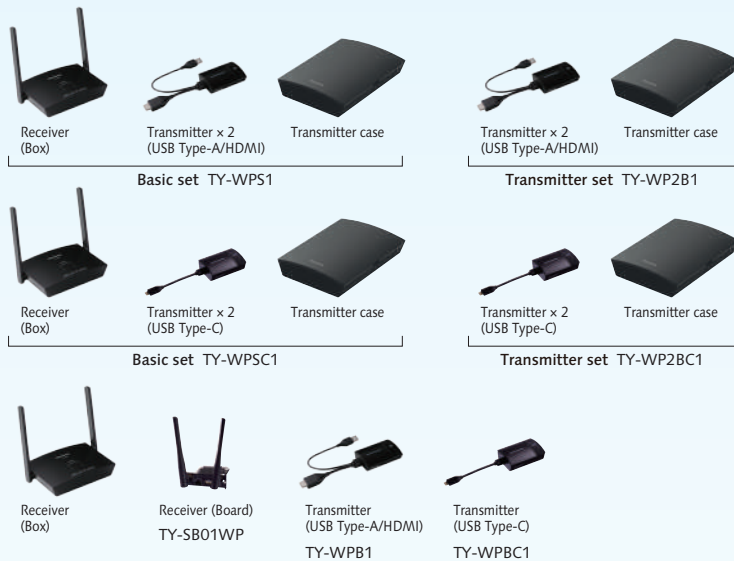
\* The playable application format, GUI and operation procedure for the SQE2 and CQE2 Series' Media Player function are different from those of other models.

# Panasonic Professional Displays Lineup

Peripherals

## PressIT

### Wireless Presentation System



## WOLFVISION CYNAP PURE

### Fully Integrated Wireless Presentation System



## PressIT360 360 degree camera speakerphone



### Pict Descriptions

<p>4K display (Actual resolution: 3840 x 2160p)</p>	<p>Capable of 24-hour continuous operation</p>	<p>Capable of 18-hour continuous operation</p>	<p>Capable of 16-hour continuous operation</p>
<p>CAT5e or higher STP cable transmits Full-HD video, audio, and control signals</p>	<p>CAT5e or higher STP cable transmits 4K video, audio, and control signals</p>	<p>Using a DisplayPort daisy chain connection to output a 4K image onto a 2x2 video wall</p>	<p>USB media player</p>
<p>USB media player supporting 4K images</p>	<p>Portrait installation possible</p>	<p>To transmit video and voice data in a Windows PC or Android device to the display in the wireless mode.</p>	<p>Intel® SDM specification compatible slot</p>
<p>Enlarge a horizontal video with three vertical displays.</p>	<p>Cisco Collaboration Device Verified</p>		

# Panasonic display ideas for a wide range of applications

## Meeting room



High image quality at 4K. Complex drawings and large amounts of text can be accurately shared. With Panasonic, a wide range of terminals are available. Can be used immediately after installing.

**Recommended models**

- EQ2/CQE2 Series >> 14p~
- PressIT >> 32p~

## Control room

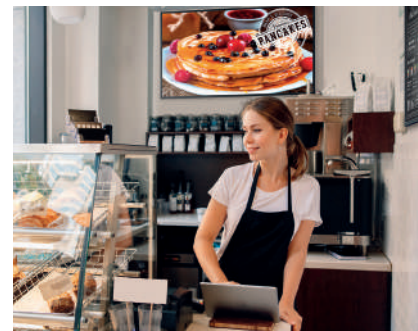


Use a 24/7 operation display where interrupted images are simply not permitted.

**Recommended models**

- SQE2 Series >> 10p~

## Retail shop



For attractive product displays, the 4K model is also recommended for in-store signage. The narrow bezel provides effective space utilization. An easy-to-see angle can also be adjusted. And Content Management Software makes it easy to control signage for individual shops.

**Recommended models**

- SQ1H/SQ2H Series >> 6p~
- EQ2/CQE2 Series >> 14p~

## Classroom



Installation is possible at a forward inclination of up to 20 degrees to maintain legibility when mounted in high places. Displays course materials for easy viewing even in a bright room.

**Recommended models**

- EQ2/CQE2 Series >> 14p~

# SQ1H Series



Model no.	TH-86SQ1HW	TH-75SQ1HW	
DISPLAY PANEL	Screen Size (Diagonal)/Aspect Ratio	86-inch class (85.6"/2174.2 mm)/16:9	75-inch class (74.5"/1892.7 mm)/16:9
	Effective Display Area (W x H)	74.60" x 41.96" (1895.0 x 1065.9 mm)	64.94" x 36.53" (1649.6 x 927.9 mm)
	Resolution (H x V)	3840 x 2160	3840 x 2160
	Brightness (Typ)	1200 cd/m <sup>2</sup>	1500 cd/m <sup>2</sup>
	Contrast Ratio	1200:1	1200:1
	Dynamic Contrast Ratio	50000:1	50000:1
	Response Time	8.0 ms (G to G)	10.0 ms (G to G)
	Viewing Angle (Horizontal/Vertical)	178° / 178° (CR>10)	178° / 178° (CR>10)
Panel Surface Treatment	Anti-glare low reflection type (Haze 3 %)	Anti-Glare type (Haze 1 %)	
TERMINAL	HDMI In	HDMI TYPE-A connector x 2 (HDCP2.2 supported)	
	DisplayPort In	DisplayPort x 1 (HDCP2.2 supported)	
	DisplayPort Out	DisplayPort x 1 (HDCP1.4 supported)	
	DVI-D In	DVI-D 24-pin x 1	
	Audio In (L/R)	Stereo Mini Jack (φ3.5 mm) x 1 0.5 V [rms]	
	PC In	-	
	Audio In (L/R)	-	
	Audio Out	Stereo Mini Jack (φ3.5 mm) x 1 0.5 V [rms], Variable (-∞ - 0 dB) (1 kHz 0 dB Input, 10 k Ω Load)	
	Serial In	D-sub 9-pin x 1, RS-232C Compatible	
	LAN	RJ45 x 1 10BASE-T/100BASE-TX, Compatible with PLink™	
	DIGITAL LINK/LAN	RJ45 x 1 Compatible with Long reach mode and PLink™, 100BASE-TX (HDCP2.2)	
	IR In/Out	Stereo Mini Jack (φ3.5 mm) x 1 / x 1	
USB	USB connector (TYPE A) x 2, DC 5 V/2 A, DC 5 V/1 A (USB3.0 is supported)		
Sensor	4-pole sub-mini jack (φ2.5 mm) x 1		
SLOT	Intel® SDM standard (3.3 V / max. 1.1 A, 12 V / max. 5.5 A)		
GENERAL	Power Requirements	110-127V AC, 50 Hz/60 Hz	
	Power Consumption	735 W	720 W
	Power Off Condition	Approx. 0.3 W	Approx. 0.3 W
	Stand-by Condition	Approx. 0.5 W	Approx. 0.5 W
	Dimensions (W x H x D) *Including handles.	75.95" x 43.31" x 3.75" (1929 x 1100 x 96 mm) <sup>3</sup>	66.28" x 37.9" x 3.75" (1684 x 962 x 96 mm) <sup>3</sup>
	Carton Size (W x H x D)	84.5" x 50.8" x 11.1" (2145 x 1290 x 280 mm)	73.7" x 45.0" x 11.1" (1870 x 1143 x 280 mm)
	Bezel Width	0.61" (15.5 mm) (T/B/L/R)	0.59" (14.9 mm) (T/B/L/R)
	Weight	Approx. 127.4 lbs. (57.8 kg)	Approx. 93.0 lbs. (42.2 kg)
	Gross Weight	Approx. 160.9 lbs. (73 kg)	Approx. 123.4 lbs. (56 kg)
	Pitch for Wall-Hanging	VESA Compliant 23.6" x 15.8" (600 x 400 mm) M8	VESA Compliant 23.6" x 15.8" (600 x 400 mm) M8
	Built-in Speaker	20 W [10 W + 10 W]	
	Orientation	Landscape/Portrait <sup>4</sup>	
	Tilting Angle	Landscape: 0-20 degrees forward Portrait: 0-20 degrees forward	Landscape: 0-20 degrees forward/backward Portrait: 0-20 degrees forward/backward
	Operating Environment	Temperature: 32 °F to 104 °F (0 °C to 40 °C) <sup>5</sup> ; 32 °F to 95 °F (0 °C to 35 °C) <sup>6</sup> , Humidity: 20% to 80% (No condensation)	
Storage Environment	Temperature: -4 °F to 140 °F (-20 °C to 60 °C), Humidity: 20 % to 80 % (No condensation)		
Operating Time <sup>7</sup>	24 h/day		
PERIPHERALS	12G-SDI Terminal Board	TY-SB01QS	TY-SB01QS
	3G-SDI Terminal Board	TY-SB01SS	TY-SB01SS
	Wireless Presentation System Receiver Board	TY-SB01WP	TY-SB01WP
	Wall-hanging Bracket	TY-WK98PV1	TY-WK98PV1
	Early Warning Software <sup>8</sup>	ET-SWA100/105 Series	ET-SWA100/105 Series
	Digital Interface Box	-	-
	DIGITAL LINK Switcher	ET-YFB200G	ET-YFB200G
	Auto Display Adjustment Upgrade Kit <sup>10</sup>	-	-

1: HDCP2.2 supported. 2: RGB/YpBp switchable. 3: Excluding handles. 4: When installing the display vertically, be sure that the power indicator comes to the right side.  
 5: For up to 4593 ft (1400 m) altitude. 6: For between 4593 ft to 9186 ft (1400 m to 2800 m) altitude.  
 7: In case of long time, the moving image is recommended to be displayed. If you display a still picture for an extended period, the image retention might remain on the screen. However, image retention can gradually disappear by displaying a moving images.  
 8: Part number suffix may differ depending on the license type.  
 9: Multi Monitoring & Control Software Ver.2.0 or later is required. Part number suffix may differ depending on the license type.  
 10: Download the latest Video Wall Manager from Global Website in advance. (<https://panasonic.net/cns/prodisplays/download/software/vwm/>)

# SQ2H Series

NEW

High Brightness

Standard



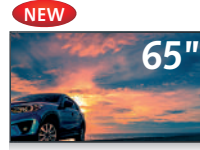
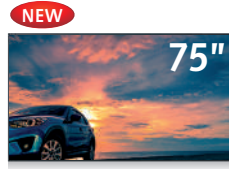
NEW



Model no.	TH-98SQ2HW	TH-86SQ2HW	
DISPLAY PANEL	Screen Size (Diagonal)/Aspect Ratio	98-inch class (97.5"/2476.9 mm)/16:9	86-inch class (85.6"/2174.2 mm)/16:9
	Effective Display Area (W x H)	84.99" x 47.80" (2158.8 x 1214.3 mm)	74.60" x 41.96" (1895.0 x 1065.9 mm)
	Resolution (H x V)	3840 x 2160	3840 x 2160
	Brightness (Typ)	700 cd/m <sup>2</sup>	700 cd/m <sup>2</sup>
	Contrast Ratio	1200:1	4000:1
	Dynamic Contrast Ratio	50000:1	50000:1
	Response Time	8.0 ms	8.0 ms
	Viewing Angle (Horizontal/Vertical)	178° / 178° (CR>10)	178° / 178° (CR>10)
Panel Surface Treatment	Anti-Glare (Haze 25 %)	Anti-Glare (Haze 25 %)	
TERMINAL	HDMI™ In	HDMI™ TYPE A Connector x 3 (HDCP2.2 supported)	
	USB	USB Connector (TYPE-A) x 2, (TYPE-C) x 1	
	PC In	Mini D-sub 15-pin x 1	
	Audio In (L/R)	Stereo Mini Jack (φ3.5 mm) x 1	
	Audio Out	Stereo Mini Jack (φ3.5 mm) x 1	
	Serial In	D-sub 9-pin x 1, RS-232C Compatible	
	LAN	RJ45 x 1 compatible with PLink™ 10BASE-T/100BASE-TX	
	IR In/Out	Stereo Mini Jack (φ3.5 mm) x 1 / x 1	
	SLOT	Intel® SDM standard (3.3 V / max. 1.1 A, 12 V / max. 5.5 A)	
	GENERAL	Power Requirements	AC110-240 V 50 Hz / 60 Hz, 5.2-2.6 A
Power Consumption		285 W (Shipping Condition)	351 W (Shipping Condition)
On Mode Average Power Consumption <sup>1</sup>		253 W (Picture Mode: [Standard])	309 W (Picture Mode: [Standard])
Power Off Condition		Approx. 0.3 W	Approx. 0.3 W
Stand-by Condition		Approx. 0.5 W	Approx. 0.5 W
Dimensions (W x H x D) <sup>2</sup>		86.36" x 49.46" x 3.55" (2194 x 1256 x 90 mm)	75.95" x 43.31" x 2.74" (1929 x 1100 x 70 mm)
Carton Size (W x H x D)		93.86" x 72.25" x 10.83" (2384 x 1835 x 275 mm)	83.86" x 52.01" x 9.77" (2130 x 1321 x 248 mm)
Bezel Width		0.63" (15.9mm) (T/R/L), 0.80" (20.1mm) (B)	0.61" (15.5mm) (T/R/L/B)
Weight		Approx. 154.33 lbs. (70 kg)	Approx. 107.4 lbs. (48.7 kg)
Gross Weight		Approx. 229.3 lbs. (104 kg)	Approx. 152.1 lbs. (69 kg)
Pitch for Wall-Hanging		VESA Compliant 23.7" x 15.8" (600 x 400 mm)	VESA Compliant 23.7" x 15.8" (600 x 400 mm)
Built-in Speaker		20 W [10 W + 10 W]	
Orientation <sup>3</sup>		Landscape/Portrait	
Tilting Angle <sup>4</sup>		0-20 degrees forward with landscape/portrait setting	
Operating Environment	Temperature: 32 °F to 104 °F (0 °C to 40 °C) for up to 4593 ft (1400 m) altitude/ 32 °F to 95 °F (0 °C to 35 °C) for between 4593 ft to 9186 ft (1400 m to 2800 m) altitude Humidity: 20 % to 80 % (No Condensation), Altitude: lower than 9186 ft (2800 m)		
Operating Time <sup>5</sup>	24 h/day		
PERIPHERALS	12G-SDI Terminal Board	TY-SB01QS	TY-SB01QS
	DIGITAL LINK TERMINAL BOARD	TY-SB01DL	TY-SB01DL
	Wireless Presentation System Receiver	TY-SB01WP	TY-SB01WP
	Wall-hanging Bracket	TY-WK98PV1	TY-WK98PV1
	Pedestal	-	-
	Early Warning Software <sup>6</sup>	ET-SWA100/105 Series	ET-SWA100/105 Series

1: Based on IEC 62087 Ed.2 measurement method.  
 2: Excluding handles.  
 3: When installing the display vertically, be sure that the power indicator comes to the right side.  
 4: Please contact your sales representative with regard to the tilt angle before installation.  
 5: In case of long time, the moving image is recommended to be displayed. If you display a still picture for an extended period, the image retention might remain on the screen. However, image retention can gradually disappear by displaying a moving images.  
 6: Multi Monitoring & Control Software Ver.2.1 or later is required. Suffix of the part number may differ depending on the license type.

# SQ2H Series



Model no.	TH-75SQ2HW	TH-65SQ2HW	TH-55SQ2HW	TH-50SQ2HW	TH-43SQ2HW
<b>DISPLAY PANEL</b>	Screen Size (Diagonal)/Aspect Ratio 75-inch class (74.5"/1892.7 mm)/16:9 Effective Display Area (W x H) 64.94" x 36.53" (1649.6 x 927.9 mm) Resolution (H x V) 3840 x 2160 Brightness (Typ) 700 cd/m <sup>2</sup> Contrast Ratio 1200:1 Dynamic Contrast Ratio 50000:1 Response Time 8.0 ms Viewing Angle (Horizontal/Vertical) 178° / 178° (CR>10) Panel Surface Treatment Anti-glare treatment (Haze 25 %)	Screen Size (Diagonal)/Aspect Ratio 65-inch class (64.5"/1638.9 mm)/16:9 Effective Display Area (W x H) 56.23" x 31.63" (1428.4 x 803.5 mm) Resolution (H x V) 3840 x 2160 Brightness (Typ) 700 cd/m <sup>2</sup> Contrast Ratio 1200:1 Dynamic Contrast Ratio 50000:1 Response Time 8.0 ms Viewing Angle (Horizontal/Vertical) 178° / 178° (CR>10) Panel Surface Treatment Anti-glare treatment (Haze 25 %)	Screen Size (Diagonal)/Aspect Ratio 55-inch class (54.6"/1387.8 mm)/16:9 Effective Display Area (W x H) 47.62" x 26.78" (1209.6 x 680.4 mm) Resolution (H x V) 3840 x 2160 Brightness (Typ) 700 cd/m <sup>2</sup> Contrast Ratio 5000:1 Dynamic Contrast Ratio 50000:1 Response Time 8.0 ms Viewing Angle (Horizontal/Vertical) 178° / 178° (CR>10) Panel Surface Treatment Anti-glare treatment (Haze 25 %)	Screen Size (Diagonal)/Aspect Ratio 50-inch class (49.50"/1257.3 mm)/16:9 Effective Display Area (W x H) 43.14" x 24.26" (1095.8 x 616.4 mm) Resolution (H x V) 3840 x 2160 Brightness (Typ) 700 cd/m <sup>2</sup> Contrast Ratio 4000:1 Dynamic Contrast Ratio 50000:1 Response Time 8.0 ms Viewing Angle (Horizontal/Vertical) 178° / 178° (CR>10) Panel Surface Treatment Anti-glare treatment (Haze 25 %)	Screen Size (Diagonal)/Aspect Ratio 43-inch class (42.5"/1079.8 mm)/16:9 Effective Display Area (W x H) 37.05" x 20.84" (941.1 x 529.4 mm) Resolution (H x V) 3840 x 2160 Brightness (Typ) 700 cd/m <sup>2</sup> Contrast Ratio 1200:1 Dynamic Contrast Ratio 50000:1 Response Time 8.0 ms Viewing Angle (Horizontal/Vertical) 178° / 178° (CR>10) Panel Surface Treatment Anti-glare treatment (Haze 25 %)
<b>TERMINAL</b>	HDMI™ TYPE A Connector x 3 (HDCP2.2 supported) USB Connector (TYPE-A) x 2, (Type-C) x 1 Mini D-sub 15-pin x 1 Stereo Mini Jack (ø3.5 mm) x 1 Stereo Mini Jack (ø3.5 mm) x 1 D-sub 9-pin x 1, RS-232C Compatible RJ45 x 1 compatible with PLink™ 10BASE-T/100BASE-TX Stereo Mini Jack (ø3.5 mm) x 1 / x 1 Intel® SDM standard (3.3 V / max. 1.1 A, 12 V / max. 5.5 A)		HDMI™ TYPE A Connector x 3 (HDCP2.2 supported) USB Connector (TYPE-A) x 2, (Type-C) x 1 Mini D-sub 15-pin x 1 Stereo Mini Jack (ø3.5 mm) x 1 Stereo Mini Jack (ø3.5 mm) x 1 D-sub 9-pin x 1, RS-232C Compatible RJ45 x 1 compatible with PLink™ 10BASE-T/100BASE-TX Stereo Mini Jack (ø3.5 mm) x 1 / x 1 Intel® SDM standard (3.3 V / max. 1.1 A, 12 V / max. 5.5 A)		
<b>GENERAL</b>	Power Requirements AC110-240 V 50 Hz / 60 Hz, 4.2-2.1 A Power Consumption 215 W (Shipping Condition) On Mode Average Power Consumption <sup>1</sup> 194 W (Picture Mode: [Standard]) Power Off Condition Approx. 0.3 W Stand-by Condition Approx. 0.5 W Dimensions (W x H x D) <sup>2</sup> 66.28" x 37.87" x 2.74" (1684 x 962 x 70 mm) Carton Size (W x H x D) 73.63" x 45.00" x 11.03" (1870 x 1143 x 280 mm) Bezel Width 0.59" (14.9 mm) (T/R/L/B) Weight Approx. 82.33 lbs. (37.4 kg) Gross Weight Approx. 112.4 lbs. (51 kg) Pitch for Wall-Hanging VESA Compliant 23.7" x 15.8" (600 x 400 mm) Built-in Speaker 20 W [10 W + 10 W] Orientation <sup>3</sup> Landscape/Portrait Tilting Angle <sup>4</sup> 0-20 degrees forward with landscape/portrait setting Operating Environment Temperature: 32 °F to 104 °F (0 °C to 40 °C) for up to 4593 ft (1400 m) altitude/ 32 °F to 95 °F (0 °C to 35 °C) for between 4593 ft to 9186 ft (1400 m to 2800 m) altitude Humidity: 20 % to 80 % (No Condensation), Altitude: lower than 9186 ft (2800 m) Operating Time <sup>5</sup> 24 h/day	Power Requirements AC110-240 V 50 Hz / 60 Hz, 3.6-1.8 A Power Consumption 175 W (Shipping Condition) On Mode Average Power Consumption <sup>1</sup> 158 W (Picture Mode: [Standard]) Power Off Condition Approx. 0.3 W Stand-by Condition Approx. 0.5 W Dimensions (W x H x D) <sup>2</sup> 57.58" x 32.97" x 2.72" (1463 x 838 x 69 mm) Carton Size (W x H x D) 63.63" x 39.30" x 7.37" (1616 x 998 x 187 mm) Bezel Width 0.59" (14.9 mm) (T/R/L/B) Weight Approx. 62.17 lbs. (28.2 kg) Gross Weight Approx. 83.8 lbs. (38 kg) Pitch for Wall-Hanging VESA Compliant 15.8" x 15.8" (400 x 400 mm) Built-in Speaker 20 W [10 W + 10 W] Orientation <sup>3</sup> Landscape/Portrait Tilting Angle <sup>4</sup> 0-20 degrees forward with landscape/portrait setting Operating Environment Temperature: 32 °F to 104 °F (0 °C to 40 °C) for up to 4593 ft (1400 m) altitude/ 32 °F to 95 °F (0 °C to 35 °C) for between 4593 ft to 9186 ft (1400 m to 2800 m) altitude Humidity: 20 % to 80 % (No Condensation), Altitude: lower than 9186 ft (2800 m) Operating Time <sup>5</sup> 24 h/day	Power Requirements AC110-240 V 50 Hz / 60 Hz, 3.4-1.7 A Power Consumption 165 W (Shipping Condition) On Mode Average Power Consumption <sup>1</sup> 149 W (Picture Mode: [Standard]) Power Off Condition Approx. 0.3 W Stand-by Condition Approx. 0.5 W Dimensions (W x H x D) <sup>2</sup> 48.89" x 28.06" x 2.60" (1242 x 713 x 66 mm) Carton Size (W x H x D) 53.15" x 33.86" x 6.30" (1350 x 860 x 160 mm) Bezel Width 0.55" (13.9 mm) (T/R/L/B) Weight Approx. 39.69 lbs. (18 kg) Gross Weight Approx. 55.1 lbs. (25 kg) Pitch for Wall-Hanging VESA Compliant 15.8" x 15.8" (400 x 400 mm) Built-in Speaker 20 W [10 W + 10 W] Orientation <sup>3</sup> Landscape/Portrait Tilting Angle <sup>4</sup> 0-20 degrees forward with landscape/portrait setting Operating Environment Temperature: 32 °F to 104 °F (0 °C to 40 °C) for up to 4593 ft (1400 m) altitude/ 32 °F to 95 °F (0 °C to 35 °C) for between 4593 ft to 9186 ft (1400 m to 2800 m) altitude Humidity: 20 % to 80 % (No Condensation), Altitude: lower than 9186 ft (2800 m) Operating Time <sup>5</sup> 24 h/day	Power Requirements AC110-240 V 50 Hz / 60 Hz, 2.8-1.4 A Power Consumption 125 W (Shipping Condition) On Mode Average Power Consumption <sup>1</sup> 114 W (Picture Mode: [Standard]) Power Off Condition Approx. 0.3 W Stand-by Condition Approx. 0.5 W Dimensions (W x H x D) <sup>2</sup> 44.43" x 25.56" x 2.60" (1129 x 649 x 66 mm) Carton Size (W x H x D) 48.43" x 31.50" x 5.60" (1230 x 800 x 142 mm) Bezel Width 0.59" (14.9 mm) (T/R/L/B) Weight Approx. 34.02 lbs. (15.5kg) Gross Weight Approx. 46.3 lbs. (21 kg) Pitch for Wall-Hanging VESA Compliant 15.8" x 15.8" (400 x 400 mm) Built-in Speaker 20 W [10 W + 10 W] Orientation <sup>3</sup> Landscape/Portrait Tilting Angle <sup>4</sup> 0-20 degrees forward with landscape/portrait setting Operating Environment Temperature: 32 °F to 104 °F (0 °C to 40 °C) for up to 4593 ft (1400 m) altitude/ 32 °F to 95 °F (0 °C to 35 °C) for between 4593 ft to 9186 ft (1400 m to 2800 m) altitude Humidity: 20 % to 80 % (No Condensation), Altitude: lower than 9186 ft (2800 m) Operating Time <sup>5</sup> 24 h/day	Power Requirements AC110-240 V 50 Hz / 60 Hz, 2.4-1.2 A Power Consumption 93 W (Shipping Condition) On Mode Average Power Consumption <sup>1</sup> 85 W (Picture Mode: [Standard]) Power Off Condition Approx. 0.3 W Stand-by Condition Approx. 0.5 W Dimensions (W x H x D) <sup>2</sup> 38.31" x 22.10" x 2.56" (973 x 562 x 65 mm) Carton Size (W x H x D) 42.13" x 26.50" x 5.56" (1070 x 673 x 141 mm) Bezel Width 0.55" (13.9 mm) (T/R/L/B) Weight Approx. 25.29 lbs. (11.5 kg) Gross Weight Approx. 35.3 lbs. (16 kg) Pitch for Wall-Hanging VESA Compliant 7.9" x 7.9" (200 x 200 mm) Built-in Speaker 20 W [10 W + 10 W] Orientation <sup>3</sup> Landscape/Portrait Tilting Angle <sup>4</sup> 0-20 degrees forward with landscape/portrait setting Operating Environment Temperature: 32 °F to 104 °F (0 °C to 40 °C) for up to 4593 ft (1400 m) altitude/ 32 °F to 95 °F (0 °C to 35 °C) for between 4593 ft to 9186 ft (1400 m to 2800 m) altitude Humidity: 20 % to 80 % (No Condensation), Altitude: lower than 9186 ft (2800 m) Operating Time <sup>5</sup> 24 h/day
<b>PERIPHERALS</b>	12G-SDI Terminal Board TY-SB01QS DIGITAL LINK TERMINAL BOARD TY-SB01DL Wireless Presentation System Receiver TY-SB01WP Wall-hanging Bracket TY-WK98PV1 Pedestal TY-ST75PE9 Early Warning Software <sup>6</sup> ET-SWA100/105 Series	TY-SB01QS TY-SB01DL TY-SB01WP TY-WK98PV1 TY-ST75PE9 ET-SWA100/105 Series	TY-SB01QS TY-SB01DL TY-SB01WP — TY-ST55PE9 ET-SWA100/105 Series	TY-SB01QS TY-SB01DL TY-SB01WP — TY-ST43PE9 ET-SWA100/105 Series	TY-SB01QS TY-SB01DL TY-SB01WP — TY-ST43PE9 ET-SWA100/105 Series

1: Based on IEC 62087 Ed.2 measurement method.

2: Excluding handles.

3: When installing the display vertically, be sure that the power indicator comes to the right side.

4: Please contact your sales representative with regard to the tilt angle before installation.

5: In case of long time, the moving image is recommended to be displayed. If you display a still picture for an extended period, the image retention might remain on the screen. However, image retention can gradually disappear by displaying a moving images.

6: Multi Monitoring & Control Software Ver.2.1 or later is required. Suffix of the part number may differ depending on the license type.

# SQE2 Series

Standard



Model no.	TH-98SQE2W	TH-86SQE2W	TH-75SQE2W	TH-65SQE2W
<b>DISPLAY PANEL</b>				
Screen Size (Diagonal)/Aspect Ratio	98-inch class (97.51"/2476.9 mm)/16:9	86-inch class (85.60"/2174.2 mm)/16:9	75-inch class (74.51"/1892.7 mm)/16:9	65-inch class (64.52"/1638.9 mm)/16:9
Effective Display Area (W x H)	84.99" x 47.80" (2158.8 x 1214.3 mm)	74.60" x 41.96" (1895.0 x 1065.9 mm)	64.94" x 36.53" (1649.6 x 927.9 mm)	56.23" x 31.63" (1428.4 x 803.5 mm)
Resolution (H x V)	3840 x 2160	3840 x 2160	3840 x 2160	3840 x 2160
Brightness (Typ)	500 cd/m <sup>2</sup>	500 cd/m <sup>2</sup>	500 cd/m <sup>2</sup>	500 cd/m <sup>2</sup>
Contrast Ratio	1200:1	1100:1	1200:1	1200:1
Dynamic Contrast Ratio	50000:1	50000:1	50000:1	50000:1
Response Time (Typ.)	8.0 ms (G to G)	8.0 ms (G to G)	8.0 ms (G to G)	8.0 ms (G to G)
Viewing Angle (Horizontal/Vertical)	178° / 178° (CR>10)	178° / 178° (CR>10)	178° / 178° (CR>10)	178° / 178° (CR>10)
Panel Surface Treatment	Anti-Glare (Haze 25 %)	Anti-Glare (Haze 28 %)	Anti-Glare (Haze 25 %)	Anti-Glare (Haze 25 %)
<b>TERMINAL</b>				
HDMI™ In/HDMI™ Out	HDMI™ TYPE A Connector x 4 (HDCP2.2 supported)/HDMI™x1 (HDCP2.2 supported)		HDMI™ TYPE A Connector x 4 (HDCP2.2 supported)/HDMI™x1 (HDCP2.2 supported)	
DisplayPort In	DisplayPort x 1 (HDCP2.2 supported)		DisplayPort x 1 (HDCP2.2 supported)	
USB	Type A: DC 5 V/max. 0.9 A, USB 3.0 is supported, Type A: DC 5 V/max. 0.5 A, USB 2.0 is supported, Type A: DC 5 V/max. 0.5 A, USB 2.0 is supported (Internal), Type C: DC 5 V/max. 3.0 A, USB 3.0 is supported, DisplayPort Alternate mode compatible		Type A: DC 5 V/max. 0.9 A, USB 3.0 is supported, Type A: DC 5 V/max. 0.5 A, USB 2.0 is supported, Type A: DC 5 V/max. 0.5 A, USB 2.0 is supported (Internal), Type C: DC 5 V/max. 3.0 A, USB 3.0 is supported, DisplayPort Alternate mode compatible	
microSD	microSD/SDHC/SDXC / MAX 1 TB		microSD/SDHC/SDXC / MAX 1 TB	
Audio Out	Stereo Mini Jack (φ3.5 mm) x 1, SPDIF x 1		Stereo Mini Jack (φ3.5 mm) x 1, SPDIF x 1	
Serial In	Stereo Mini Jack (φ3.5 mm) x 1, RS-232C Compatible		Stereo Mini Jack (φ3.5 mm) x 1, RS-232C Compatible	
LAN	RJ45 x 1, 10BASE-T/100BASE-TX		RJ45 x 1, 10BASE-T/100BASE-TX	
IR In	Stereo Mini Jack (φ3.5 mm) x 1		Stereo Mini Jack (φ3.5 mm) x 1	
SLOT	Intel® SDM standard (66 W)		Intel® SDM standard (66 W)	
Wi-Fi	Yes (USB Dongle)		Yes (Built-in) IEEE 802.11 a/b/g/n Dual, Wi-Fi certified	
Bluetooth®	Yes, Bluetooth5.1		Yes, Bluetooth5.1	
<b>GENERAL</b>				
HTML Browser	HTML5 (Vwed)		HTML5 (Vwed)	
Android™-OS	Yes		Yes	
Power Supply	AC 110-240 V 50 Hz/60 Hz, 7.7 A-3.8 A	AC 110-240 V 50 Hz/60 Hz, 4.2 A-2.1 A	AC 110-240 V 50 Hz/60 Hz, 3.9 A-1.9 A	AC 110-240 V 50 Hz/60 Hz, 3.5 A-1.8 A
Power Consumption	450 W (Shipping Condition)	210 W (Shipping Condition)	185 W (Shipping Condition)	170 W (Shipping Condition)
On Mode Average Power Consumption <sup>1</sup>	410 W (Picture Mode: [Natural])	205 W (Picture Mode: [Natural])	185 W (Picture Mode: [Natural])	165 W (Picture Mode: [Natural])
Power Off Condition	Approx. 0 W	Approx. 0 W	Approx. 0 W	Approx. 0 W
Stand-by Condition	Approx. 0.5 W	Approx. 0.5 W	Approx. 0.5 W	Approx. 0.5 W
Dimensions (W x H x D) <sup>2</sup>	87.25" x 50.02" x 3.87" (2216 x 1271 x 99 mm)	75.91" x 43.28" x 3.16" (1929 x 1100 x 81 mm)	66.28" x 38.09" x 3.92" (1684 x 968 x 100 mm)	57.32" x 32.84" x 3.78" (1456 x 835 x 96 mm)
Carton Size (W x H x D)	95.87" x 66.30" x 15.24" (2435 x 1684 x 387 mm)	85.16" x 55.32" x 14.96" (2163 x 1405 x 380 mm)	76.70" x 46.07" x 11.03" (1948 x 1170 x 280 mm)	63.27" x 38.58" x 6.97" (1607 x 980 x 177 mm)
Bezel Width	1.11" (28.2 mm) (T/R/L/B)	0.6" (15.3 mm) (T/R/L/B)	0.62" (15.7 mm) (T/R/L), 0.85" (21.5 mm) (B)	0.51" (12.9 mm) (T/R/L), 0.63" (16.1 mm) (B)
Weight	Approx. 220.1 lbs. (99.8 kg)	Approx. 138.7 lbs. (62.9 kg)	Approx. 82.5 lbs. (37.4 kg)	Approx. 54.9 lbs. (24.9 kg)
Gross Weight	Approx. 330.7 lbs. (150kg)	Approx. 187.4 lbs.(85 kg)	Approx. 121.3 lbs.(55 kg)	Approx. 79.4 lbs.(36 kg)
Pitch for Wall-Hanging	VESA Compliant 31.5" x 15.8" (800 x 400 mm), Installed by: M8 screws	VESA Compliant 23.7" x 15.8" (600 x 400 mm), Installed by: M8 screws	VESA Compliant 23.7" x 15.8" (600 x 400 mm), Installed by: M8 screws	VESA Compliant 23.7" x 15.8" (600 x 400 mm), Installed by: M6 screws
Built-in Speaker	24 W [(6 W x 2) + (6 W x 2)]		24 W [(6 W x 2) + (6 W x 2)]	
Orientation	Landscape/Portrait <sup>3</sup>		Landscape/Portrait <sup>3</sup>	
Tilting Angle <sup>4</sup>	20 degrees forward and backward with landscape/portrait setting		45 degrees forward and backward with landscape/portrait setting	
Operating Environment	Temperature: 32 °F to 104 °F (0 °C to 40 °C) for up to 4593 ft (1400 m) altitude/ 32 °F to 95 °F (0 °C to 35 °C) for between 4593 ft to 9186 ft (1400 m to 2800 m) altitude Humidity: 20 % to 80 % (No Condensation), Altitude: lower than 9186 ft (2800 m)		Temperature: 32 °F to 104 °F (0 °C to 40 °C) for up to 4593 ft (1400 m) altitude/ 32 °F to 95 °F (0 °C to 35 °C) for between 4593 ft to 9186 ft (1400 m to 2800 m) altitude Humidity: 20 % to 80 % (No Condensation), Altitude: lower than 9186 ft (2800 m)	
Storage Environment	Temperature: -4 °F to 140 °F (-20 °C to 60 °C), Humidity: 20 % to 80 % (No Condensation)		Temperature: -4 °F to 140 °F (-20 °C to 60 °C), Humidity: 20 % to 80 % (No Condensation)	
Operating Time <sup>5</sup>	24 h/day		24 h/day	
<b>PERIPHERALS</b>				
12G-SDI Terminal Board <sup>6</sup>	TY-SB01QS	TY-SB01QS	TY-SB01QS	TY-SB01QS
Wireless Presentation System Receiver Board	TY-SB01WP	TY-SB01WP	TY-SB01WP	TY-SB01WP
DIGITAL LINK TERMINAL BOARD <sup>7, 8</sup>	TY-SB01DL	TY-SB01DL	TY-SB01DL	TY-SB01DL
Early Warning Software <sup>9</sup>	ET-SWA100/105 Series	ET-SWA100/105 Series	ET-SWA100/105 Series	ET-SWA100/105 Series

1: Based on IEC 62087 Ed.2 measurement method. 2: Not including remote controller sensor box.  
 3: When installing the Display vertically, be sure to rotate clockwise and install.  
 4: Please contact your sales representative with regard to the tilt angle before installation.  
 5: Displaying a still image for a long time may cause burn-in (image persistence artifacts), it could be mitigated when display video image.  
 6: Some functions are not supported. 7: LAN control is not supported. 8: 4K signal is not supported. (75/65SQE2)  
 9: Multi Monitoring & Control Software Ver. 2.1 or later is required. Suffix of the part number may differ depending on the license type.



Model no.	TH-55SQE2W	TH-50SQE2W	TH-43SQE2W
<b>DISPLAY PANEL</b>			
Screen Size (Diagonal)/Aspect Ratio	55-inch class (54.63"/1387.8 mm)/16:9	50-inch class (49.50"/1257.3 mm)/16:9	43-inch class (42.51"/1079.8 mm)/16:9
Effective Display Area (W x H)	47.62" x 26.78" (1209.6 x 680.4 mm)	43.14" x 24.26" (1095.8 x 616.4 mm)	37.05" x 20.84" (941.1 x 529.4 mm)
Resolution (H x V)	3840 x 2160	3840 x 2160	3840 x 2160
Brightness (Typ)	500 cd/m <sup>2</sup>	500 cd/m <sup>2</sup>	500 cd/m <sup>2</sup>
Contrast Ratio	1200:1	5000:1	1200:1
Dynamic Contrast Ratio	50000:1	50000:1	50000:1
Response Time	8.0 ms (G to G)	9.5 ms (G to G)	8.0 ms (G to G)
Viewing Angle (Horizontal/Vertical)	178° / 178° (CR>10)	178° / 178° (CR>10)	178° / 178° (CR>10)
Panel Surface Treatment	Anti-Glare (Haze 25 %)	Anti-Glare (Haze 25 %)	Anti-Glare (Haze 25 %)
<b>TERMINAL</b>			
HDMI™ In/HDMI™ Out	HDMI™ TYPE A Connector x 4 (HDCP2.2 supported)/HDMI™x1 (HDCP2.2 supported)		HDMI™ TYPE A Connector x 4 (HDCP2.2 supported)/HDMI™x1 (HDCP2.2 supported)
DisplayPort In	DisplayPort x 1 (HDCP2.2 supported)		DisplayPort x 1 (HDCP2.2 supported)
USB	Type A: DC 5 V/max. 0.9 A, USB 3.0 is supported, Type A: DC 5 V/max. 0.5 A, USB 2.0 is supported, Type A: DC 5 V/max. 0.5 A, USB 2.0 is supported (Internal), Type C: DC 5 V/max. 3.0 A, USB 3.0 is supported, DisplayPort Alternate mode compatible		Type A: DC 5 V/max. 0.9 A, USB 3.0 is supported, Type A: DC 5 V/max. 0.5 A, USB 2.0 is supported, Type A: DC 5 V/max. 0.5 A, USB 2.0 is supported (Internal), Type C: DC 5 V/max. 3.0 A, USB 3.0 is supported, DisplayPort Alternate mode compatible
microSD	microSD/SDHC/SDXC / MAX 1 TB		microSD/SDHC/SDXC / MAX 1 TB
Audio Out	Stereo Mini Jack (ø3.5 mm) x 1, SPDIF x 1		Stereo Mini Jack (ø3.5 mm) x 1, SPDIF x 1
Serial In	Stereo Mini Jack (ø3.5 mm) x 1, RS-232C Compatible		Stereo Mini Jack (ø3.5 mm) x 1, RS-232C Compatible
LAN	RJ45 x 1, 10BASE-T/100BASE-TX		RJ45 x 1, 10BASE-T/100BASE-TX
IR In	Stereo Mini Jack (ø3.5 mm) x 1		Stereo Mini Jack (ø3.5 mm) x 1
SLOT	Intel® SDM standard (66 W)		Intel® SDM standard (50 W)
Wi-Fi	Yes (Built-in) IEEE 802.11 a/b/g/n Dual, Wi-Fi certified		Yes (Built-in) IEEE 802.11 a/b/g/n Dual, Wi-Fi certified
Bluetooth®	Yes, Bluetooth5.1		Yes, Bluetooth5.1
<b>GENERAL</b>			
HTML Browser	HTML5 (Vvwd)		HTML5 (Vvwd)
Android™-OS	Yes		Yes
Power Supply	AC 110-240 V 50 Hz/60 Hz, 2.9 A-1.4 A	AC 110-240 V 50 Hz/60 Hz, 2.7 A-1.3 A	AC 110-240 V 50 Hz/60 Hz, 2.4 A-1.2 A
Power Consumption	115 W (Shipping Condition)	105 W (Shipping Condition)	110 W (Shipping Condition)
On Mode Average Power Consumption <sup>1</sup>	115 W (Picture Mode: [Natural])	100 W (Picture Mode: [Natural])	105 W (Picture Mode: [Natural])
Power Off Condition	Approx. 0 W	Approx. 0 W	Approx. 0 W
Stand-by Condition	Approx. 0.5 W	Approx. 0.5 W	Approx. 0.5 W
Dimensions (W x H x D) <sup>2</sup>	48.64" x 27.92" x 3.28" (1236 x 710 x 84 mm)	44.12" x 25.43" x 3.27" (1121 x 646 x 83 mm)	37.92" x 21.85" x 3.26" (964 x 555 x 83 mm)
Carton Size (W x H x D)	53.90" x 34.41" x 6.50" (1369 x 874 x 165 mm)	47.83" x 30.51" x 6.50" (1215 x 775 x 165 mm)	41.34" x 28.27" x 7.01" (1050 x 718 x 178 mm)
Bezel Width	0.43" (11 mm) (T/R/L), 0.54" (13.8 mm) (B)	0.39" (10 mm) (T/R/L), 0.61" (15.5 mm) (B)	0.33" (8.4 mm) (T/R/L), 0.47" (12 mm) (B)
Weight	Approx. 40.2 lbs. (18.2 kg)	Approx. 30.2 lbs. (13.7 kg)	Approx. 23.4 lbs. (10.6 kg)
Gross Weight	Approx. 55.1 lbs. (25 kg)	Approx. 41.9 lbs. (19 kg)	Approx. 35.3 lbs. (16 kg)
Pitch for Wall-Hanging	VESA Compliant 15.8" x 15.8" (400 x 400 mm), Installed by: M6 screws	VESA Compliant 7.9" x 7.9" (200 x 200 mm), Installed by: M6 screws	VESA Compliant 7.9" x 7.9" (200 x 200 mm), Installed by: M6 screws
Built-in Speaker	20 W [10 W + 10 W]		16 W [8 W + 8 W]
Orientation	Landscape/Portrait <sup>3</sup>		Landscape/Portrait <sup>3</sup>
Tilting Angle <sup>4</sup>	45 degrees forward and backward with landscape/portrait setting		45 degrees forward and backward with landscape/portrait setting
Operating Environment	Temperature: 32 °F to 104 °F (0 °C to 40 °C) for up to 4593 ft (1400 m) altitude/ 32 °F to 95°F (0 °C to 35 °C) for between 4593 ft to 9186 ft (1400 m to 2800 m) altitude Humidity: 20 % to 80 % (No Condensation), Altitude: lower than 9186 ft (2800 m)		Temperature: 32 °F to 104 °F (0 °C to 40 °C) for up to 4593 ft (1400 m) altitude/ 32 °F to 95°F (0 °C to 35 °C) for between 4593 ft to 9186 ft (1400 m to 2800 m) altitude Humidity: 20 % to 80 % (No Condensation), Altitude: lower than 9186 ft (2800 m)
Storage Environment	Temperature: -4 °F to 140 °F (-20 °C to 60 °C), Humidity: 20 % to 80 % (No Condensation)		Temperature: -4 °F to 140 °F (-20 °C to 60 °C), Humidity: 20 % to 80 % (No Condensation)
Operating Time <sup>5</sup>	24 h/day		24 h/day
<b>PERIPHERALS</b>			
12G-SDI Terminal Board <sup>6</sup>	TY-SB01QS	TY-SB01QS	TY-SB01QS
Wireless Presentation System Receiver Board	TY-SB01WP	TY-SB01WP	TY-SB01WP
DIGITAL LINK TERMINAL BOARD <sup>7, 8</sup>	TY-SB01DL	TY-SB01DL	TY-SB01DL
Early Warning Software <sup>9</sup>	ET-SWA100/105 Series	ET-SWA100/105 Series	ET-SWA100/105 Series

1: Based on IEC 62087 Ed.2 measurement method. 2: Not including remote controller sensor box.

3: When installing the Display vertically, be sure to rotate clockwise and install.

4: Please contact your sales representative with regard to the tilt angle before installation.

5: Displaying a still image for a long time may cause burn-in (image persistence artifacts), it could be mitigated when display video image.

6: Some functions are not supported. 7: LAN control is not supported. 8: 4K signal is not supported. (55/50/43SQE2)

9: Multi Monitoring & Control Software Ver. 2.1 or later is required. Suffix of the part number may differ depending on the license type.

# EQ2 Series



Model no.	TH-86EQ2W	TH-75EQ2W	TH-65EQ2W
<b>DISPLAY PANEL</b>			
Screen Size (Diagonal)/Aspect Ratio	86-inch class (85.6"/2174.2 mm) /16:9	75-inch class (74.5"/1892.7 mm) /16:9	65-inch class (64.5"/1638.9 mm) /16:9
Effective Display Area (W x H)	74.60" x 41.96" (1895.0 x 1065.9 mm)	64.94" x 36.53" (1649.6 x 927.9 mm)	56.23" x 31.63" (1428.4 x 803.5 mm)
Resolution (H x V)	3840 x 2160	3840 x 2160	3840 x 2160
Brightness (Typ)	500 cd/m <sup>2</sup>	500 cd/m <sup>2</sup>	500 cd/m <sup>2</sup>
Contrast Ratio	1200:1	1200:1	1200:1
Dynamic Contrast Ratio	50000:1	50000:1	50000:1
Response Time	8.0 ms (G to G)	8.0 ms (G to G)	8.0 ms (G to G)
Viewing Angle (Horizontal/Vertical)	178°/178° (CR>0)	178°/178° (CR>0)	178°/178° (CR>0)
Panel Surface Treatment	Anti-Glare (Haze 25 %)	Anti-Glare (Haze 25 %)	Anti-Glare (Haze 25 %)
<b>TERMINAL</b>			
HDMI In	HDMI TYPE-A Connector x 3 (HDCP2.2 supported)		HDMI TYPE-A Connector x 3 (HDCP2.2 supported)
Audio In (L/R)	Stereo Mini Jack (ø3.5 mm) x 1 (Shared with AV/PC In)		Stereo Mini Jack (ø3.5 mm) x 1 (Shared with AV/PC In)
PC In	Mini D-sub 15-pin x 1 (Female)		Mini D-sub 15-pin x 1 (Female)
Audio In (L/R)	Stereo Mini Jack (ø3.5 mm) x 1		Stereo Mini Jack (ø3.5 mm) x 1
USB	Type A: DC 5 V/1 A, USB 3.0 is supported, Type A: DC 5 V/2 A, USB 2.0 is supported, Type C: max ~ 60W (Power Delivery compatible), USB2.0 is supported, DisplayPort Alternate mode compatible		Type A: DC 5 V/1 A, USB 3.0 is supported, Type A: DC 5 V/2 A, USB 2.0 is supported, Type C: max ~ 60W (Power Delivery compatible), USB2.0 is supported, DisplayPort Alternate mode compatible
Serial In	D-sub 9-pin x 1, RS-232C Compatible		D-sub 9-pin x 1, RS-232C Compatible
DIGITAL LINK	-		-
LAN	RJ45 x 1, RJ45 10BASE-T/100BASE-TX		RJ45 x 1, RJ45 10BASE-T/100BASE-TX
IR In/Out	Stereo Mini Jack (ø3.5 mm) x 1 / x 1		Stereo Mini Jack (ø3.5 mm) x 1 / x 1
Audio Out	Stereo Mini Jack (ø3.5 mm) x 1		Stereo Mini Jack (ø3.5 mm) x 1
SLOT	SDM-S / SDM-L, 3.3 V/max.1.1 A, 12 V/max 5.5 A		SDM-S / SDM-L, 3.3 V/max.1.1 A, 12 V/max 5.5 A
<b>GENERAL</b>			
Power Requirements	AC 110 - 240 V 50 Hz / 60 Hz	AC 110 - 240 V 50 Hz / 60 Hz	AC 110 - 240 V 50 Hz / 60 Hz
Power Consumption	580 W	385 W	340 W
Power Off Condition	Approx. 0.3 W	Approx. 0.3 W	Approx. 0.3 W
Stand-by Condition	Approx. 0.5 W	Approx. 0.5 W	Approx. 0.5 W
Dimensions (W x H x D <sup>1</sup> )	75.95" x 43.31" x 3.76" (1929 x 1100 x 96 mm) <sup>1</sup>	66.28" x 37.87" x 3.76" (1684 x 962 x 96 mm) <sup>1</sup>	57.58" x 32.97" x 3.68" (1463 x 838 x 94 mm) <sup>1</sup>
Carton Size (W x H x D)	83.86" x 52.01" x 9.77" (2130 x 1321 x 248 mm)	73.63" x 45.00" x 11.03" (1870 x 1143 x 280 mm)	63.63" x 39.30" x 7.37" (1616 x 998 x 187 mm)
Bezel Width	0.61" (15.5 mm) (T/R/L/B)	0.59" (14.9 mm) (T/R/L/B)	0.59" (14.9 mm) (T/R/L/B)
Weight	Approx. 111.8 lbs. (50.7 kg)	Approx. 82.2 lbs. (37.3 kg)	Approx. 65.5 lbs. (29.7 kg)
Gross Weight	Approx. 156.5 lbs. (71.0 kg)	Approx. 112.4 lbs. (51.0 kg)	Approx. 88.2 lbs. (40.0 kg)
Pitch for Wall-Hanging	23.6" x 15.8" (600 x 400 mm) VESA Compliant, M8 (Screw hole depth: 0.8" (20 mm))	23.6" x 15.8" (600 x 400 mm) VESA Compliant, M8 (Screw hole depth: 0.7" (18 mm))	VESA Compliant 15.8" x 15.8" (400 x 400 mm), M6 (Screw hole depth: 0.8" (20 mm))
Built-in Speaker	20 W [10 W + 10 W]		20 W [10 W + 10 W]
Orientation	Landscape/Portrait		Landscape/Portrait
Tilting Angle <sup>2</sup>	0-20 degrees forward/backward with landscape/portrait setting		0-20 degrees forward/backward with landscape/portrait setting
Operating Environment	Temperature: 32 °F to 104 °F (0 °C to 40 °C) / for up to 4593 ft (1400 m) altitude, 32 °F to 95 °F (0 °C to 35 °C) / Altitude 4593 ft to 9186 ft [1400-2800 m] / Humidity: 20 % - 80 % (No condensation)		Temperature: 32 °F to 104 °F (0 °C to 40 °C) / for up to 4593 ft (1400 m) altitude, 32 °F to 95 °F (0 °C to 35 °C) / Altitude 4593 ft to 9186 ft [1400-2800 m] / Humidity: 20 % to 80 % (No condensation)
Storage Environment	Temperature: -4 °F to 140 °F (-20 °C to 60 °C) / Humidity: 20 % to 80 % (Non condensation)		Temperature: -4°F to 140 °F (-20 °C to 60 °C) / Humidity: 20 % to 80 % (Non condensation)
Operating Time <sup>3</sup>	18 h/day		18 h/day
<b>PERIPHERALS</b>			
Pedestal	-		TY-ST75PE9
Wall-hanging Bracket	TY-WK98PV1	TY-WK98PV1	TY-WK98PV1
Early Warning Software <sup>4</sup>	ET-SWA100/105 Series		ET-SWA100/105 Series

1: Including handles.

2: Please contact your sales representative with regard to the tilt angle before installation.

3: In case of long time, the moving image is recommended to be displayed. If you display a still picture for an extended period, the image retention might remain on the screen. However, image retention can gradually disappear by displaying a moving images.

4: Multi Monitoring & Control Software Ver.2.0 or later is required. Suffix of the part number may differ depending on the licence type.



# EQ2 Series



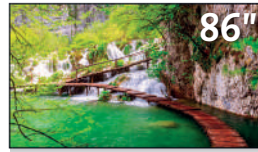
Model no.	TH-55EQ2W	TH-50EQ2W	TH-43EQ2W
<b>DISPLAY PANEL</b>			
Screen Size (Diagonal)/Aspect Ratio	55-inch class (54.6"/1387.8 mm) /16:9	50-inch class (49.5"/1257.3 mm) /16:9	43-inch class (42.5"/1079.8 mm) /16:9
Effective Display Area (W x H)	47.62" x 26.78" (1209.6 x 680.4 mm)	43.14" x 24.26" (1095.8 x 616.4 mm)	37.05" x 20.84" (941.1 x 529.4 mm)
Resolution (H x V)	3840 x 2160	3840 x 2160	3840 x 2160
Brightness (Typ)	500 cd/m <sup>2</sup>	500 cd/m <sup>2</sup>	500 cd/m <sup>2</sup>
Contrast Ratio	1200:1	5000:1	1200:1
Dynamic Contrast Ratio	50000:1	50000:1	50000:1
Response Time	8.0 ms (G to G)	9.5 ms (G to G)	8.0 ms (G to G)
Viewing Angle (Horizontal/Vertical)	178°/178° (CR>0)	178°/178° (CR>0)	178°/178° (CR>0)
Panel Surface Treatment	Anti-Glare (Haze 25 %)	Anti-Glare (Haze 25 %)	Anti-Glare (Haze 25 %)
<b>TERMINAL</b>			
HDMI In	HDMI TYPE-A Connector x 3 (HDCP2.2 supported)		HDMI TYPE-A Connector x 3 (HDCP2.2 supported)
Composite In	-		-
DVI-D In	-		-
Audio In (L/R)	Stereo Mini Jack (ø3.5 mm) x 1 (Shared with AV/PC In)		Stereo Mini Jack (ø3.5 mm) x 1 (Shared with AV/PC In)
PC In	Mini D-sub 15-pin x 1 (Female)		Mini D-sub 15-pin x 1 (Female)
Audio In (L/R)	Stereo Mini Jack (ø3.5 mm) x 1		Stereo Mini Jack (ø3.5 mm) x 1
USB	Type A: DC 5 V/1 A, USB 3.0 is supported, Type A: DC 5 V/2 A, USB 2.0 is supported, Type C: max ~ 60W (Power Delivery compatible), USB2.0 is supported, DisplayPort Alternate mode compatible		Type A: DC 5 V/1 A, USB 3.0 is supported, Type A: DC 5 V/2 A, USB 2.0 is supported, Type C: max ~ 60W (Power Delivery compatible), USB2.0 is supported, DisplayPort Alternate mode compatible
Serial In	D-sub 9-pin x 1, RS-232C Compatible		D-sub 9-pin x 1, RS-232C Compatible
DIGITAL LINK	-		-
LAN	RJ45 x 1, RJ45 10BASE-T/100BASE-TX		RJ45 x 1, RJ45 10BASE-T/100BASE-TX
IR In/Out	Stereo Mini Jack (ø3.5 mm) x 1 / x 1		Stereo Mini Jack (ø3.5 mm) x 1 / x 1
Audio Out	Stereo Mini Jack (ø3.5 mm) x 1		Stereo Mini Jack (ø3.5 mm) x 1
SLOT	SDM-S / SDM-L, 3.3 V/max.1.1 A, 12 V/max 5.5 A		SDM-S / SDM-L, 3.3 V/max.1.1 A, 12 V/max 5.5 A
<b>GENERAL</b>			
Power Requirements	AC 110 - 240 V 50 Hz / 60 Hz		AC 110 - 240 V 50 Hz / 60 Hz
Power Consumption	280 W		225 W
Power Off Condition	Approx. 0.3 W		Approx. 0.3 W
Stand-by Condition	Approx. 0.5 W		Approx. 0.5 W
Dimensions (W x H x D)	48.89" x 28.06" x 2.60" (1242 x 713 x 66 mm)	44.43" x 25.56" x 2.60" (1129 x 649 x 66 mm)	38.31" x 22.10" x 2.56" (973 x 562 x 65 mm)
Carton Size (W x H x D)	53.15" x 33.86" x 6.30" (1350 x 860 x 160 mm)	48.43" x 31.50" x 5.60" (1230 x 800 x 142 mm)	42.13" x 26.50" x 5.56" (1070 x 673 x 141 mm)
Bezel Width	0.55" (13.9 mm) (T/R/L/B)		0.55" (13.9 mm) (T/R/L/B)
Weight	Approx. 39.7 lbs. (18.0 kg)		Approx. 25.8 lbs. (11.7 kg)
Gross Weight	Approx. 55.1 lbs. (25.0 kg)		Approx. 35.3 lbs. (16.0 kg)
Pitch for Wall-Hanging	VESA Compliant 15.8" x 15.8" (400 x 400 mm), M6 (Screw hole depth: 0.7" (18 mm))		VESA Compliant 7.9" x 7.9" (200 x 200 mm), M6 (Screw hole depth 0.6" (16 mm))
Built-in Speaker	20 W [10 W + 10 W]		20 W [10 W + 10 W]
Orientation	Landscape/Portrait		Landscape/Portrait
Tilting Angle <sup>1</sup>	0-20 degrees forward/backward with landscape/portrait setting		0-20 degrees forward/backward with landscape/portrait setting
Operating Environment	Temperature: 32 °F to 104 °F (0 °C to 40 °C) / for up to 4593 ft (1400 m) altitude, 32 °F to 95 °F (0 °C to 35 °C) / Altitude 4593 ft to 9186 ft [1400-2800 m] / Humidity: 20 % - 80 % (No condensation)		Temperature: 32 °F to 104 °F (0 °C to 40 °C) / for up to 4593 ft (1400 m) altitude, 32 °F to 95 °F (0 °C to 35 °C) / Altitude 4593 ft to 9186 ft [1400-2800 m] / Humidity: 20 % to 80 % (No condensation)
Storage Environment	Temperature: -4 °F to 140 °F (-20 °C to 60 °C) / Humidity: 20 % to 80 % (Non condensation)		Temperature: -4 °F to 140 °F (-20 °C to 60 °C) / Humidity: 20 % to 80 % (Non condensation)
Operating Time <sup>2</sup>	18 h/day		18 h/day
<b>PERIPHERALS</b>			
Pedestal	TY-ST55PE9		TY-ST43PE9
Wall-hanging Bracket	-		-
Early Warning Software <sup>3</sup>	ET-SWA100/105 Series		ET-SWA100/105 Series

1: Please contact your sales representative with regard to the tilt angle before installation.

2: In case of long time, the moving image is recommended to be displayed. If you display a still picture for an extended period, the image retention might remain on the screen. However, image retention can gradually disappear by displaying a moving images.

3: Multi Monitoring & Control Software Ver.2.0 or later is required. Suffix of the part number may differ depending on the licence type.

# CQE2 Series



Model no.	TH-98CQE2	TH-86CQE2	TH-75CQE2	TH-65CQE2
<b>DISPLAY PANEL</b>				
Screen Size (Diagonal)/Aspect Ratio	98-inch class (97.51"/2476.9 mm)/16:9	86-inch class (85.60"/2174.2 mm)/16:9	75-inch class (74.51"/1892.7 mm)/16:9	65-inch class (64.52"/1638.9 mm)/16:9
Effective Display Area (W x H)	84.99" x 47.80" (2158.8 x 1214.3 mm)	74.60" x 41.96" (1895.0 x 1065.9 mm)	64.94" x 36.53" (1649.6 x 927.9 mm)	56.23" x 31.63" (1428.4 x 803.5 mm)
Resolution (H x V)	3840 x 2160	3840 x 2160	3840 x 2160	3840 x 2160
Brightness (Typ)	500 cd/m <sup>2</sup>	400 cd/m <sup>2</sup>	400 cd/m <sup>2</sup>	500 cd/m <sup>2</sup>
Contrast Ratio	1200:1	1200:1	1200:1	1200:1
Dynamic Contrast Ratio	50000:1	50000:1	50000:1	50000:1
Response Time (Typ.)	8.0 ms (G to G)	8.0 ms (G to G)	8.0 ms (G to G)	8.0 ms (G to G)
Viewing Angle (Horizontal/Vertical)	178° / 178° (CR>10)	178° / 178° (CR>10)	178° / 178° (CR>10)	178° / 178° (CR>10)
Panel Surface Treatment	Anti-Glare (Haze 25 %)	Anti-glare low reflection (Haze 3 %)	Anti-Glare (Haze 1 %)	Anti-Glare (Haze 1 %)
<b>TERMINAL</b>				
HDMI™ In/HDMI™ Out	HDMI™ TYPE A Connector x 4 (HDCP2.2 supported)/HDMI™x1 (HDCP2.2 supported)		HDMI™ TYPE A Connector x 4 (HDCP2.2 supported)/HDMI™x1 (HDCP2.2 supported)	
USB	Type A: DC 5 V/max. 0.9 A, USB 3.0 is supported, Type A: DC 5 V/max. 0.5 A, USB 2.0 is supported, Type A: DC 5 V/max. 0.5 A, USB 2.0 is supported (Internal), Type C: DC 5 V/max. 3.0 A, USB 3.0 is supported, DisplayPort Alternate mode compatible		Type A: DC 5 V/max. 0.9 A, USB 3.0 is supported, Type A: DC 5 V/max. 0.5 A, USB 2.0 is supported, Type A: DC 5 V/max. 0.5 A, USB 2.0 is supported (Internal), Type C: DC 5 V/max. 3.0 A, USB 3.0 is supported, DisplayPort Alternate mode compatible	
microSD	microSD/SDHC/SDXC / MAX 1 TB		microSD/SDHC/SDXC / MAX 1 TB	
Audio Out	Stereo Mini Jack (ø3.5 mm) x 1, SPDIF x 1		Stereo Mini Jack (ø3.5 mm) x 1, SPDIF x 1	
Serial In	Stereo Mini Jack (ø3.5 mm) x 1, RS-232C Compatible		Stereo Mini Jack (ø3.5 mm) x 1, RS-232C Compatible	
LAN	RJ45 x 1, 10BASE-T/100BASE-TX		RJ45 x 1, 10BASE-T/100BASE-TX	
IR In	Stereo Mini Jack (ø3.5 mm) x 1		Stereo Mini Jack (ø3.5 mm) x 1	
Wi-Fi	Yes (USB Dongle)		Yes (Built-in) IEEE 802.11 a/b/g/n Dual, Wi-Fi certified	
Bluetooth®	Yes, Bluetooth5.1		Yes, Bluetooth5.1	
<b>GENERAL</b>				
HTML Browser	HTML5 (Vwed)		HTML5 (Vwed)	
Android™-OS	Yes		Yes	
Power Supply	AC 110-127 V 50 Hz/60 Hz, 6.7 A	AC 110-127 V 50 Hz/60 Hz, 3.8 A	AC 110-127 V 50 Hz/60 Hz, 2.7 A	AC 110-127 V 50 Hz/60 Hz, 2.6 A
Power Consumption	445 W (Shipping Condition)	235 W (Shipping Condition)	170 W (Shipping Condition)	160 W (Shipping Condition)
On Mode Average Power Consumption <sup>1</sup>	410 W (Picture Mode: [Natural])	225 W (Picture Mode: [Natural])	165 W (Picture Mode: [Natural])	160 W (Picture Mode: [Natural])
Power Off Condition	Approx. 0 W	Approx. 0 W	Approx. 0 W	Approx. 0 W
Stand-by Condition	Approx. 0.5 W	Approx. 0.5 W	Approx. 0.5 W	Approx. 0.5 W
Dimensions (W x H x D) <sup>2</sup>	87.25" x 50.02" x 3.55" (2216 x 1271 x 91 mm)	75.91" x 43.28" x 3.13" (1929 x 1100 x 80 mm)	66.28" x 38.09" x 3.92" (1684 x 968 x 100 mm)	57.32" x 32.84" x 3.78" (1456 x 835 x 96 mm)
Carton Size (W x H x D)	95.87" x 66.30" x 15.24" (2435 x 1684 x 387 mm)	85.16" x 55.32" x 14.96" (2163 x 1405 x 380 mm)	76.70" x 46.07" x 11.03" (1948 x 1170 x 280 mm)	63.27" x 38.58" x 6.97" (1607 x 980 x 177 mm)
Bezel Width	1.11" (28.2 mm) (T/R/L/B)	0.6" (15.3 mm) (T/R/L/B)	0.62" (15.7 mm) (T/R/L), 0.85" (21.5 mm) (B)	0.51" (12.9 mm) (T/R/L), 0.63" (16.1 mm) (B)
Weight	Approx. 219.2 lbs. (99.4 kg)	Approx. 136.1 lbs. (61.7 kg)	Approx. 81.2 lbs. (36.8 kg)	Approx. 54.3 lbs. (24.6 kg)
Gross Weight	Approx. 328.5 lbs. (149 kg)	Approx. 185.2 lbs. (84 kg)	Approx. 116.9 lbs. (53 kg)	Approx. 77.2 lbs. (35 kg)
Pitch for Wall-Hanging	VESA Compliant 31.5" x 15.8" (800 x 400 mm), Installed by: M8 screws	VESA Compliant 23.7" x 15.8" (600 x 400 mm), Installed by: M8 screws	VESA Compliant 23.7" x 15.8" (600 x 400 mm), Installed by: M8 screws	VESA Compliant 23.7" x 15.8" (600 x 400 mm), Installed by: M6 screws
Built-in Speaker	24 W [(6 W x 2) + (6 W x 2)]		24 W [(6 W x 2) + (6 W x 2)]	
Orientation	Landscape/Portrait <sup>3</sup>		Landscape/Portrait <sup>3</sup>	
Tilting Angle <sup>4</sup>	20 degrees forward and backward with landscape/portrait setting		45 degrees forward and backward with landscape/portrait setting	
Operating Environment	Temperature: 32 °F to 104 °F (0 °C to 40 °C) for up to 4593 ft (1400 m) altitude/ 32 °F to 95 °F (0 °C to 35 °C) for between 4593 ft to 9186 ft (1400 m to 2800 m) altitude Humidity: 20 % to 80 % (No Condensation), Altitude: lower than 9186 ft (2800 m)		Temperature: 32 °F to 104 °F (0 °C to 40 °C) for up to 4593 ft (1400 m) altitude/ 32 °F to 95 °F (0 °C to 35 °C) for between 4593 ft to 9186 ft (1400 m to 2800 m) altitude Humidity: 20 % to 80 % (No Condensation), Altitude: lower than 9186 ft (2800 m)	
Storage Environment	Temperature: -4 °F to 140 °F (-20 °C to 60 °C), Humidity: 20 % to 80 % (No Condensation)		Temperature: -4 °F to 140 °F (-20 °C to 60 °C), Humidity: 20 % to 80 % (No Condensation)	
Operating Time <sup>5</sup>	24 h/day		16 h/day	
<b>REMARKS</b>				
Early Warning Software <sup>6</sup>	ET-SWA100/105 Series	ET-SWA100/105 Series	ET-SWA100/105 Series	ET-SWA100/105 Series

1: Based on IEC 62087 Ed.2 measurement method.

2: Not including remote controller sensor box.

3: When installing the Display vertically, be sure to rotate clockwise and install.

4: Please contact your sales representative with regard to the tilt angle before installation.

5: Displaying a still image for a long time may cause burn-in (image persistence artifacts), it could be mitigated when display video image.

6: Multi Monitoring & Control Software Ver. 2.1 or later is required. Suffix of the part number may differ depending on the license type.

# CQE2 Series



Model no.	TH-55CQE2	TH-50CQE2	TH-43CQE2
<b>DISPLAY PANEL</b>			
Screen Size (Diagonal)/Aspect Ratio	55-inch class (54.63"/1387.8 mm)/16:9	50-inch class (49.50"/1257.3 mm)/16:9	43-inch class (42.51"/1079.8 mm)/16:9
Effective Display Area (W x H)	47.62" x 26.78" (1209.6 x 680.4 mm)	43.14" x 24.26" (1095.8 x 616.4 mm)	37.05" x 20.84" (941.1 x 529.4 mm)
Resolution (H x V)	3840 x 2160	3840 x 2160	3840 x 2160
Brightness (Typ)	500 cd/m <sup>2</sup>	500 cd/m <sup>2</sup>	500 cd/m <sup>2</sup>
Contrast Ratio	1200:1	5000:1	1200:1
Dynamic Contrast Ratio	50000:1	50000:1	50000:1
Response Time	8.0 ms (G to G)	9.5 ms (G to G)	8.0 ms (G to G)
Viewing Angle (Horizontal/Vertical)	178° / 178° (CR>10)	178° / 178° (CR>10)	178° / 178° (CR>10)
Panel Surface Treatment	Anti-Glare (Haze 1 %)	Anti-Glare (Haze 3 %)	Anti-Glare (Haze 1 %)
<b>TERMINAL</b>			
HDMI™ In/HDMI™ Out	HDMI™ TYPE A Connector x 4 (HDCP2.2 supported)/HDMI™x1 (HDCP2.2 supported)		HDMI™ TYPE A Connector x 4 (HDCP2.2 supported)/HDMI™x1 (HDCP2.2 supported)
USB	Type A: DC 5 V/max. 0.9 A, USB 3.0 is supported, Type A: DC 5 V/max. 0.5 A, USB 2.0 is supported, Type A: DC 5 V/max. 0.5 A, USB 2.0 is supported (Internal), Type C: DC 5 V/max. 3.0 A, USB 3.0 is supported, DisplayPort Alternate mode compatible		Type A: DC 5 V/max. 0.9 A, USB 3.0 is supported, Type A: DC 5 V/max. 0.5 A, USB 2.0 is supported, Type A: DC 5 V/max. 0.5 A, USB 2.0 is supported (Internal), Type C: DC 5 V/max. 3.0 A, USB 3.0 is supported, DisplayPort Alternate mode compatible
microSD	microSD/SDHC/SDXC / MAX 1 TB		microSD/SDHC/SDXC / MAX 1 TB
Audio Out	Stereo Mini Jack (ø3.5 mm) x 1, SPDIF x 1		Stereo Mini Jack (ø3.5 mm) x 1, SPDIF x 1
Serial In	Stereo Mini Jack (ø3.5 mm) x 1, RS-232C Compatible		Stereo Mini Jack (ø3.5 mm) x 1, RS-232C Compatible
LAN	RJ45 x 1, 10BASE-T/100BASE-TX		RJ45 x 1, 10BASE-T/100BASE-TX
IR In	Stereo Mini Jack (ø3.5 mm) x 1		Stereo Mini Jack (ø3.5 mm) x 1
Wi-Fi	Yes (Built-in) IEEE 802.11 a/b/g/n Dual, Wi-Fi certified		Yes (Built-in) IEEE 802.11 a/b/g/n Dual, Wi-Fi certified
Bluetooth®	Yes, Bluetooth5.1		Yes, Bluetooth5.1
HTML Browser	HTML5 (Vwed)		HTML5 (Vwed)
<b>GENERAL</b>			
Android™-OS	Yes		Yes
Power Supply	AC 110-127 V 50 Hz/60 Hz, 1.9 A	AC 110-127 V 50 Hz/60 Hz, 1.7 A	AC 110-127 V 50 Hz/60 Hz, 1.8 A
Power Consumption	110 W (Shipping Condition)	100 W (Shipping Condition)	110 W (Shipping Condition)
On Mode Average Power Consumption <sup>1</sup>	110 W (Picture Mode: [Natural])	95 W (Picture Mode: [Natural])	110 W (Picture Mode: [Natural])
Power Off Condition	Approx. 0 W		Approx. 0 W
Stand-by Condition	Approx. 0.5 W		Approx. 0.5 W
Dimensions (W x H x D) <sup>2</sup>	48.64" x 27.92" x 2.67" (1236 x 710 x 68 mm)	44.12" x 25.43" x 2.66" (1121 x 646 x 68 mm)	37.92" x 21.85" x 2.66" (964 x 555 x 68 mm)
Carton Size (W x H x D)	53.90" x 34.41" x 6.50" (1369 x 874 x 165 mm)	47.83" x 30.51" x 6.50" (1215 x 775 x 165 mm)	41.34" x 28.27" x 7.01" (1050 x 718 x 178 mm)
Bezel Width	0.43" (11 mm) (T/R/L), 0.54" (13.8 mm) (B)	0.39" (10 mm) (T/R/L), 0.61" (15.5 mm) (B)	0.33" (8.4 mm) (T/R/L), 0.47" (12 mm) (B)
Weight	Approx. 39.5 lbs. (17.9 kg)	Approx. 29.6 lbs. (13.4 kg)	Approx. 22.7 lbs. (10.3 kg)
Gross Weight	Approx. 52.9 lbs. (24 kg)	Approx. 39.7 lbs. (18 kg)	Approx. 30.9 lbs. (14 kg)
Pitch for Wall-Hanging	VESA Compliant 15.8" x 15.8" (400 x 400 mm), Installed by: M6 screws	VESA Compliant 7.9" x 7.9" (200 x 200 mm), Installed by: M6 screws	VESA Compliant 7.9" x 7.9" (200 x 200 mm), Installed by: M6 screws
Built-in Speaker	20 W [10 W + 10 W]		16 W [8 W + 8 W]
Orientation	Landscape/Portrait <sup>3</sup>		Landscape/Portrait <sup>3</sup>
Tilting Angle <sup>4</sup>	45 degrees forward and backward with landscape/portrait setting		45 degrees forward and backward with landscape/portrait setting
Operating Environment	Temperature: 32 °F to 104 °F (0 °C to 40 °C) for up to 4593 ft (1400 m) altitude/ 32 °F to 95°F (0 °C to 35 °C) for between 4593 ft to 9186 ft (1400 m to 2800 m) altitude Humidity: 20 % to 80 % (No Condensation), Altitude: lower than 9186 ft (2800 m)		Temperature: 32 °F to 104 °F (0 °C to 40 °C) for up to 4593 ft (1400 m) altitude/ 32 °F to 95°F (0 °C to 35 °C) for between 4593 ft to 9186 ft (1400 m to 2800 m) altitude Humidity: 20 % to 80 % (No Condensation), Altitude: lower than 9186 ft (2800 m)
Storage Environment	Temperature: -4 °F to 140 °F (-20 °C to 60 °C), Humidity: 20 % to 80 % (No Condensation)		Temperature: -4 °F to 140 °F (-20 °C to 60 °C), Humidity: 20 % to 80 % (No Condensation)
Operating Time <sup>5</sup>	16 h/day		16 h/day
<b>PERIPHERALS</b>			
Early Warning Software <sup>6</sup>	ET-SWA100/105 Series	ET-SWA100/105 Series	ET-SWA100/105 Series

1: Based on IEC 62087 Ed.2 measurement method.

2: Not including remote controller sensor box.

3: When installing the Display vertically, be sure to rotate clockwise and install.

4: Please contact your sales representative with regard to the tilt angle before installation.

5: Displaying a still image for a long time may cause burn-in (image persistence artifacts), it could be mitigated when display video image.

6: Multi Monitoring & Control Software Ver. 2.1 or later is required. Suffix of the part number may differ depending on the license type.

# CQE2-IR Series

NEW



NEW



NEW



NEW



Multi-Touch Screen

Model no.	TH-86CQE2-IR	TH-75CQE2-IR	TH-65CQE2-IR	TH-55CQE2-IR
<b>DISPLAY PANEL</b>				
Panel size	86-inch class (85.60-inch/2174.2 mm)	75-inch class (74.51-inch/1892.7 mm)	65-inch class (64.52-inch/1638.9 mm)	55-inch class (54.63-inch/1387.8 mm)
Effective display area (W x H)	1895.0 x 1065.9 mm (74.60" x 41.96")	1649.6 x 927.9 mm (64.94" x 36.53")	1428.4 x 803.5 mm (56.23" x 31.63")	1209.6 x 680.4 mm (47.62" x 26.78")
Resolution	3840 x 2160		3840 x 2160	
Brightness (typ.)	400 cd/m <sup>2</sup>		500 cd/m <sup>2</sup>	
Contrast	1200:1		1200:1	
Viewing angle [(T/B)/(L/R)]	178°/178° (CR>10)		178°/178° (CR>10)	
Panel surface treatment	Anti-glare acid etched glass with ≤ 5% ± 3 haze		Anti-glare acid etched glass with ≤ 5% ± 3 haze	
<b>TOUCH OPERATION</b>				
Detection Method	Infrared Blocking Detection Method		Infrared Blocking Detection Method	
Touch Operation	Up to 40-point multi-touch		Up to 40-point multi-touch	
Touch Method	Support Pen, Finger, or any non-transparent object		Support Pen, Finger, or any non-transparent object	
Response Time (Single Touch)	6ms		6ms	
Power Supply	USB 4.75V-5.25V / ≤200mA		USB 4.75V-5.25V / ≤200mA	
OS	Windows 10, 8, 7, MAC OS, Android, Linux		Windows 10, 8, 7, MAC OS, Android, Linux	
<b>TERMINAL</b>				
HDMI™ IN	HDMI™ x 4 (compatible with HDCP2.2)		HDMI™ x 4 (compatible with HDCP2.2)	
USB	Type A: DC 5 V/max. 0.9 A, USB 3.0 is supported, Type A: DC 5 V/max. 0.5 A, USB 2.0 is supported, Type A: DC 5 V/max. 0.5 A, USB 2.0 is supported (Internal), Type C: DC 5 V/max. 3.0 A, USB 3.0 is supported, DisplayPort Alternate mode compatible		Type A: DC 5 V/max. 0.9 A, USB 3.0 is supported, Type A: DC 5 V/max. 0.5 A, USB 2.0 is supported, Type A: DC 5 V/max. 0.5 A, USB 2.0 is supported (Internal), Type C: DC 5 V/max. 3.0 A, USB 3.0 is supported, DisplayPort Alternate mode compatible	
microSD	microSD/SDHC/SDXC / MAX 1 TB		microSD/SDHC/SDXC / MAX 1 TB	
Serial IN	Stereo mini jack (ø3.5 mm) x 1, RS-232C Compatible		Stereo mini jack (ø3.5 mm) x 1, RS-232C Compatible	
LAN	RJ45 x 1, compatible with PLink™ 10BASE-T/100BASE-TX/1000BASE-T		RJ45 x 1, compatible with PLink™ 10BASE-T/100BASE-TX/1000BASE-T	
IR IN	Stereo mini jack (ø3.5 mm) x 1		Stereo mini jack (ø3.5 mm) x 1	
Slot	No		No	
Wi-Fi	Yes (Dongle)	Yes (Built-in)	Yes (Built-in)	
Bluetooth*	Yes (Dongle)	Yes (Built-in)	Yes (Built-in)	
Audio OUT	Stereo mini jack (ø3.5 mm) x 1, SPDIF x 1		Stereo mini jack (ø3.5 mm) x 1, SPDIF x 1	
<b>GENERAL</b>				
HTML browser	HTML5 (Vwed)		HTML5 (Vwed)	
Android™-OS	Yes		Yes	
Operating time <sup>1</sup>	16 h/day		16 h/day	
Orientation	Landscape/Portrait		Landscape/Portrait	
Tilt angle <sup>2</sup>	0-20 degrees forward with landscape setting		0-20 degrees forward with landscape setting	
Built-in speaker	24 W	20 W	20 W	
Power supply	AC 220-240 V 50 Hz/60 Hz, 1.9 A	AC 220-240 V 50 Hz/60 Hz, 1.4 A	AC 220-240 V 50 Hz/60 Hz, 1.4 A	AC 220-240 V 50 Hz/60 Hz, 1.0 A
Power consumption	235 W (Shipping Condition)	170 W (Shipping Condition)	160 W (Shipping Condition)	110 W (Shipping Condition)
On mode average power consumption <sup>3</sup>	225 W (Picture Mode: [Natural])	165 W (Picture Mode: [Natural])	160 W (Picture Mode: [Natural])	110 W (Picture Mode: [Natural])
Power off condition	Approx. 0 W		Approx. 0 W	
Stand-by condition	Approx. 0.5 W		Approx. 0.5 W	
Dimension (WxHxD) (Excluding remote IR sensor)	1962 x 1136 x 59,9 mm	1716 x 1002 x 90,8 mm	1486 x 867,9 x 91,4 mm	1259,8 x 730,4 x 84,7 mm
Weight	92,4 kg	61,5 kg	44,5 kg	29,1 kg
Wall-hanging pitch	600 x 400 mm, M8		600 x 400 mm, M6	400 x 400 mm, M6
Operating environment	Temperature: 0 °C to 40 °C (32 °F to 104 °F)/ Humidity: 20-80 % (Non condensation)/for up to 0-1400 m (4593 ft) altitude. Temperature: 0 °C to 35 °C (32 °F to 95 °F)/Altitude 1400 -2800 m (4593 ft to 7874 ft)		Temperature: 0 °C to 40 °C (32 °F to 104 °F)/ Humidity: 20-80 % (Non condensation)/for up to 0-1400 m (4593 ft) altitude. Temperature: 0 °C to 35 °C (32 °F to 95 °F)/Altitude 1400 -2800 m (4593 ft to 7874 ft)	
<b>FEATURES</b>	Early Warning Software <sup>4</sup>		Early Warning Software <sup>4</sup>	
	ET-SWA100/105 Series		ET-SWA100/105 Series	

1: In case of long time, the moving image is recommended to be displayed. If you display a still picture for an extended period, the image retention might remain on the screen. However, image retention can gradually disappear by displaying a moving images.

2: Please contact your sales representative with regard to the tilt angle before installation.

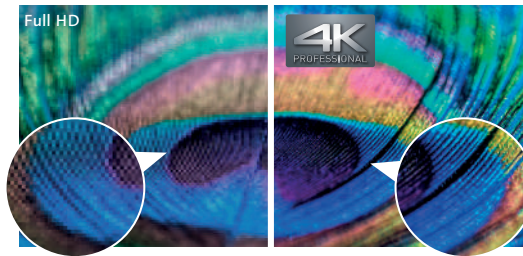
3: Based on IEC 62087 Ed.2 measurement method.

4: Multi Monitoring & Control Software ver.2.1 or later required.

**Elaborate 4K Picture Quality down to the Tiniest Details**

SQ1H SQ2H SQE2 EQ2 CQE2 CQE2-IR

With approximately 8,290,000 pixels, about four times the pixels of a Full-HD display, images are highly detailed. This dynamic, large-screen display achieves true-to-life finely nuanced images. With an optimal viewing distance of 1.5 times the screen height, the 4K display renders the information you want to transmit with excellent clarity.



\* Images are simulated.

**Supports HDR and BT.2020 Emulation**

SQ1H SQ2H EQ2

The SQ1H, SQ2H and EQ2 Series supports HDR (High Dynamic Range) (PQ and HLG). Image reproduction is stunning, from deepest black to sparkling bright highlights. Additionally, they have emulation mode for BT.2020. This enables an emulation display to support the wide color gamut of the ITU-R BT.2020 standard.

**Supports the Intel® SDM Specification Slot Standard**

SQ1H SQ2H SQE2

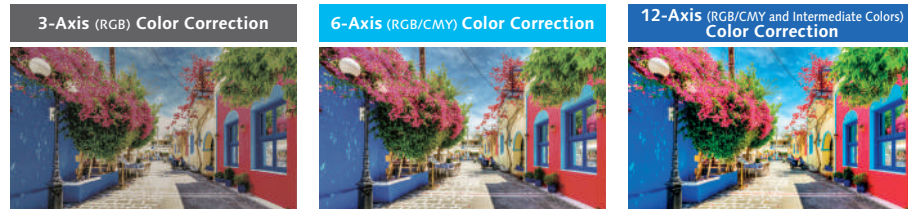
The SQ1H/SQ2H/SQE2 Series are equipped with the Intel® SDM specification slot standard that supports 4K signals. Combined with the interface board, you can easily use a built-in PC and add various interfaces.



**High Color Reproduction (6-Axis & 12-Axis Color Correction)**

SQ1H SQ2H EQ2  
\*12-Axis compatible

The color space on LCD displays tends to narrow when the luminance level drops, and it's often accompanied by color phase shifts. Six Axis Coordinate Correction applies image processing to balance the six axes of the three primary colors (RGB) and their complementary colors (CMY).



\* Images are simulated.

**Portrait Installation Capability**

\* Except the CQE2 Series.

When the Large size display is installed vertically, it can display a person in almost life-size dimensions. It is ideal for digital signage use because it faithfully reproduces the textures and colors of a model's clothing and accessories. It helps to maintain a high-quality brand image. Vertical installation also has no effect on the lifetime of the panel.



**Easy Display of Images Optimized for the Display Content**

SQ1H SQ2H EQ2

Conventional display panels are preset with display modes such as Standard and Dynamic. The SQ1H, SQ2H and EQ2 Series comes with an extensive display menu to let you select the most suitable mode for the content to be displayed and the viewing environment. You can select the best mode for the video source and the place of display.



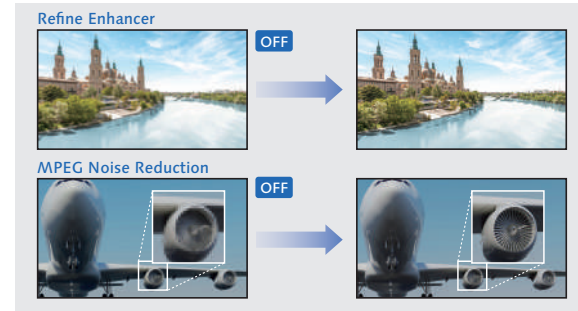
\*Although the term "DICOM" is used, this product is not medical equipment. Do not use displayed images for medical purposes such as examination or diagnosis.

**•Refine Enhancer**

Corrects blurry image contours resulting from resizing, etc., to improve the image resolution.

**•MPEG Noise Reduction**

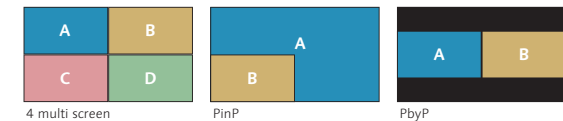
Noise reduction suppresses the block noise and mosquito noise that are characteristic of digital video signals. This faithfully reproduces the inherent beauty of the image.



**Multi Input Screen Capability with No Processor Required**

SQ1H

Multi Input Screen Capability with No Processor Required The SQ1H Series can simultaneously display multiple images on a single screen. In addition to 4 multi screens, the SQ1H Series can display 2 screens, such as PinP and PbyP. This is ideal for checking details in various applications, such as videoconferences, digital signage, and surveillance monitoring.



**Brilliant, High-Quality over 1200 cd/m<sup>2</sup> Images for Bright Lobbies**

SQ1H\*

The SQ1H Series provides highly visible signage even in open spaces with natural lighting. A panel with a wide viewing angle is used, and it has an eye-catching effect even when people are moving.

\*TH-86SQ1H is 1200 cd/m<sup>2</sup>, TH-75SQ1H is 1500 cd/m<sup>2</sup>.



### Dynamic Signage is Possible with the Portrait Zoom

SQ1H SQ2H EQ2

Split the content from image sources, and enlarge the display in a portrait orientation. There is no need to use a special device, such as a processor, while creating content from various images. Placing three 65-inch models vertically creates a display equivalent to 112 inches. This enables highly visible store signage.



\* The picture quality may be degraded when the image is enlarged.

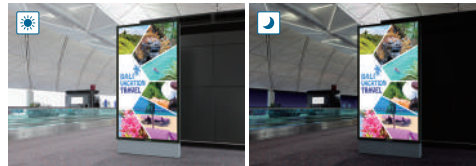
\*These functions on the 98/86SQ1 models are compatible with the Software Main Version 3.0000 or later. (For the EQ2 Series: Software Main Version 2.000 or later is required.) Please contact your sales representative with regard to details.

### Efficiency and Reliability for Continuous 24-hour Operation

SQ1H SQ2H SQE2 EQ2 CQE2 CQE2-IR  
\*98CQE2 only

The use of highly durable panel materials and quality electronic components ensures dependable 24-hour operation seven days a week.

\* Display of moving images is recommended when panels are in use for long periods to prevent image retention. Note that image burn-in can be gradually rectified with the periodical display of moving images.



### A Stylish and slim design Accentuates the Image

SQ1H SQ2H EQ2

The stylish and slim design complies with the ADA standard (a depth of less than 4-inches (approx. 100 mm) with brackets (TY-WK98PV1)) in all important aspects. The narrow bezel displays higher-impact images, further enhancing the 4K picture quality. The slim profile isn't the least oppressive even when installed in a hanging configuration.

\* The availability of the TY-WK98PV1 varies depending on the country.  
\* ADA-compliant only when used with a combination of 98/86/75/65-inch model + TY-WK98PV1.



\* ADA stands for the "Americans with Disabilities Act," a United States law made to protect people with disabilities from discrimination.

### Fanless Design

SQ2H EQ2

Standard models robust fanless design prevents problems caused by the intake of dusty air. The displays can be safely installed and operated in high-traffic environments.

### Enables Writing on the Display Screen

SQ2H EQ2

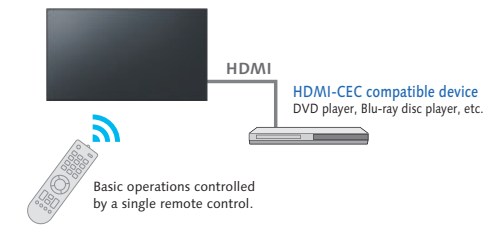
The EQ2 Series is equipped with a whiteboard function. By setting the USB receiver of the mouse on the display, you can use the mouse to write on the display screen and zoom in/out. This is useful for facilitating efficient meetings.



### HDMI-CEC Device Linking Supported

SQ1H SQ2H SQE2 EQ2

HDMI-CEC compatible devices can be connected to the display by an HDMI cable, enabling the basic operations (such as power ON/OFF) of the compatible devices to be controlled by the display's remote control. Power ON/OFF of the display can also be switched using only the remote control (or main unit buttons) of the HDMI-CEC compatible devices.

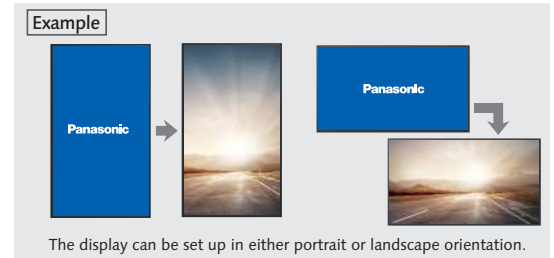


\* The control of all devices cannot be guaranteed.

### Customizable Original Screen

SQ1H SQ2H SQE2 EQ2 CQE2 CQE2-IR

An original image created by your company or other desired picture can be displayed when the unit is turned on and when there is no input signal. The image data for the original screen can be transferred and stored in the display unit via a USB memory. This function allows a company logo mark, brand image, etc., to be displayed when there is no input signal.



- Certain limitations apply to the format for original screen.  
\* The EQ2 Series is compatible with 3480 x 2160 and 1920 x 1080 resolution.  
\* The SQE2 and CQE2 series can display any image only when there is no external signal input. Image settings when starting up the display are not supported.

### 4K Daisy Chain can be Constructed with Even Higher Resolution Multi-Screens

SQ1H SQE2

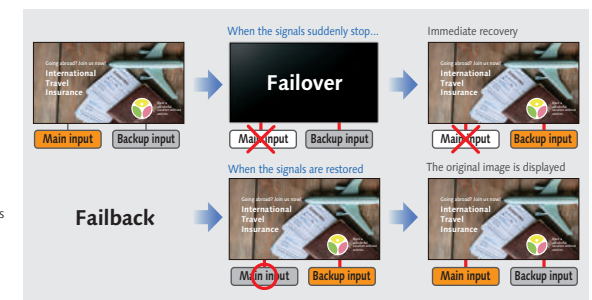
The SQ1H series are equipped with DisplayPort input/output terminals. The SQE2 Series supports 4K daisy chaining with HDMI input/output. Construct a multi-screen that can output 4K images by installing multiple units and connecting them in a daisy chain.



### Failover and Failback Safeguards for Mission Critical Situations

SQ1H SQ2H EQ2

These models are equipped with a variety of signal input terminals. If the main video and audio signals are interrupted, the system immediately switches to alternative signals. This makes it ideal for mission critical control rooms and surveillance centers. If the main signals are restored, the original image is displayed.



\* The usable combinations of main and backup signals are limited. For details, see the product website.

### Simple Signage Operation with No STB

\* The playable application format, GUI and operation procedure for the SQE2 Series' Media Player function are different from those of other models.

The display can automatically start showing pictures when a USB memory containing data is inserted. The display unit can be used as digital signage without a set-top box or PC. And the content can be displayed smoothly without including the black screen display. What's more, the order of content playback and playback time can be programmed. Content can also be rewritten and multiple displays can be operated via LAN.\*

- If it is difficult to insert a USB memory due to installation conditions, use a commercially available extension cable.
- Some files cannot be played back even if they are in the supported format. Regarding restrictions, see the operation manual.
- \* Multi Monitoring & Control Software (free) is required.

SQ1H
SQ2H
\*SQE2
EQ2

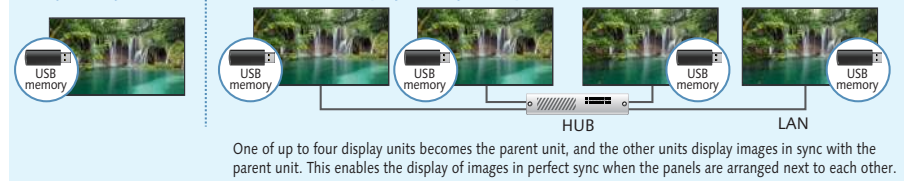
Applicable format

Still Image	JPG, JPEG, JPE, BMP*
Motion Image	AVI, MKV, ASF, WMV, TS, MTS, MP4, 3GP, MOV, FLV, F4V

\* BMP is supported only by the EQ2 Series.  
\* The SQ1H/SQ2H/EQ2 Series are compatible with the 4K signal.

#### Playback by one unit

#### Simultaneous playback by multiple units



### Play USB Content Instantly

\* The playable application format, GUI and operation procedure for the SQE2 and CQE2 Series' Media Player function are different from those of other models.

Playing Full HD video, still images, and digital documents from USB storage devices couldn't be easier. Just insert a thumb drive into the USB port and start presenting without needing to connect a PC. The Memory Viewer app enables image\* (JPEG, BMP) and video\* (WMV, AVI, MOV, MP4, MPG) selection from handy thumbnail previews.

- \* In some cases, files may not be viewable even if they are encoded in a supported format.

#### Applicable format

Still Image	JPG, JPEG, JPE, BMP
Motion Image	AVI, MKV, ASF, WMV, GS, MGS, MP4, 3GP, MOV, FLV, F4V

- \* The SQE2 and CQE2 Series are not compatible with WMV, MTS and F4V.

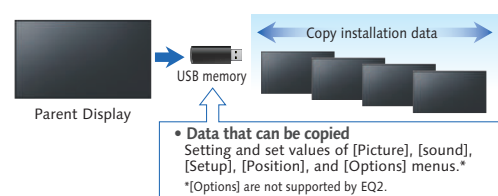
SQ1H
SQ2H
\*SQE2
EQ2
\*CQE2
CQE2-IR

### Cloning Function Speeds Up Multiple Display Setup

\* The GUI and operation procedure for the SQE2 Series' Cloning function are different from those of other models.

When installing multiple displays, the Cloning function lets you use a USB memory (or LAN network) to copy the settings of a parent display to other units, thus greatly shortening the setup time.

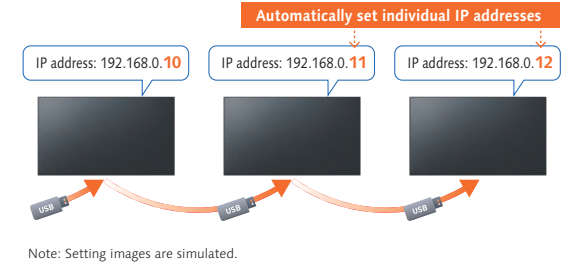
- [Date & Time], [Network Settings], [LAN Settings] and Display ID cannot be copied.
- The Cloning function works only for displays with the same screen size.



### USB Memory Network Settings

SQ1H SQ2H EQ2

Using a USB memory device, the network setting can be made for multiple displays. Individual IP addresses for each unit are automatically set.



### An Auto Volume Mode for Easier Listening

SQ1H SQ2H EQ2

This function makes voices easier to listen to in video conferences or when the video is displayed, for improved audio quality. A setting is also possible to improve sound muffling when the display is mounted on a wall. If the automatic sound volume adjustment function is used, information sharing is possible with the sound level at a comfortable level.

- \* This function on the 98/86SQ1 Series is compatible with the Software Main Version 4.0000 or later. (for the EQ2 Series, Soft Main Version 2.000 or later is required.) Please contact your sales representative with regard to details.

### Make Your Signage Easy with Panasonic Application

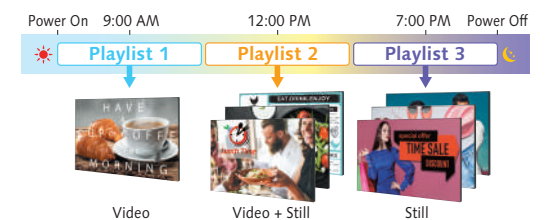
SQ1H SQ2H \*SQE2 EQ2 \*CQE2 CQE2-IR  
\*Synchronized playback is not available.

The SQ1H, SQ2H, SQE2, EQ2 and CQE2 Series features a USB Media Player function that allows easy signage playback. Content Management Software is an application software for scheduling digital signage playback on a computer. It also allows power ON/OFF to be set.

For more information about Content Management Software Version 4.0.2, please visit:  
<https://panasonic.net/cns/prodisplays/download/software/>

### Play Content Automatically with Scheduling Function

Content Management Software for PC Version 4.0.2 (free) enables easy playlist creation with media support including combinations of still and video images. You can set up schedules for playing and closing your media playlist at predetermined dates and times.



### Convenient Playlist and Schedule Syncing

Playlists and schedules created with Content Management Software can be transferred to displays with USB memory, or via LAN. Synchronized playback on multiple displays is also supported.

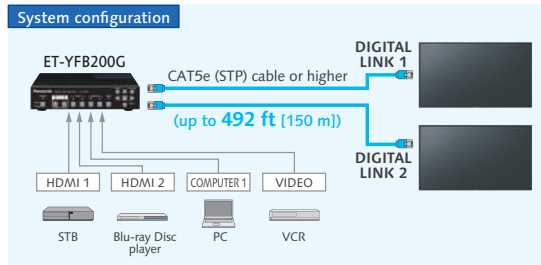


### DIGITAL LINK Function Enables Simple Installation and Low System Costs

SQ1H

Using DIGITAL LINK makes it possible to transmit video, audio and control signals over a long distance (up to 492 ft [150 m]) with a single LAN cable\*. Easy cabling also reduces labor during setup. This provides transmission of high-quality images and sounds, as well as remote control.

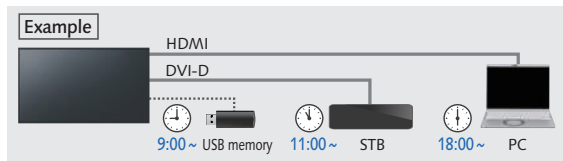
\* When connected with the [Long reach] mode, the maximum transmission distance is 492 ft (150 m). In this case, the unit can receive the signals of up to 1080/60p. A CAT5e (STP) cable or higher is required. This supports 4K video over distances of up to 164 ft (50 m) with a single LAN cable.



### Timer-Programmable Switching of Device Connection

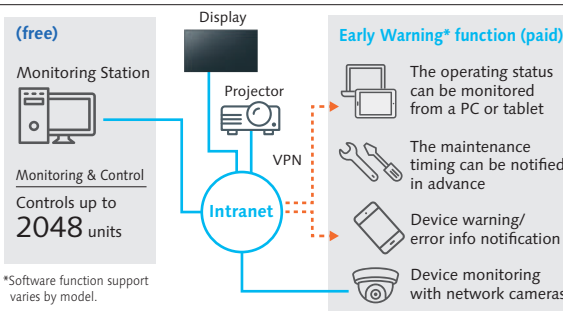
SQ2H EQ2

The timer function of the display unit can be used to change connected signal source devices at a desired time. This allows an easy change of displayed content according to the application or the progress of an event.



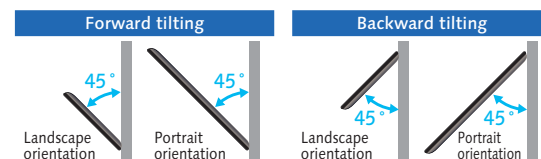
### Multi Monitoring & Control Software

Compatible with Multi Monitoring & Control Software for addition of new functions, such as automatic searching for map displays and registered devices. Displays and peripheral equipment on the intranet can be controlled and their status can be monitored. Also error notification and error indication can be detected by an indication monitoring function (for a fee) for improved maintenance.



### Choose the Installation to Match Your Application

Panasonic displays are designed for use in either portrait or horizontal orientation with no effect on panel color and lifespan, further reducing TCO. A tilt installation up to 45 degrees forward or backward is also possible. The angle can be adjusted for easy viewing when installed in a high location.



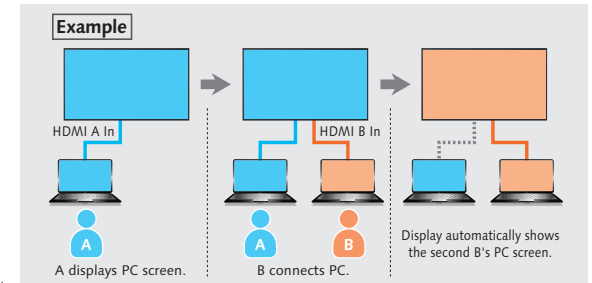
\* The installable angle varies depending on the model. For details, see the specifications page for each model. For more information on the specifications page, please visit the download page. ([https://panasonic.net/cns/prodisplays/download/spec\\_manual/](https://panasonic.net/cns/prodisplays/download/spec_manual/))

### Smooth Switching of Presenters

SQ1H SQ2H EQ2

These displays automatically switches source signals when the input signal for the current content stops or when an input signal other than the signal of the current content is received. When presenters change during a meeting, the displayed image can be switched easily by simply changing the cable connection, thus eliminating the need to operate the remote control.

\* The 2 switching inputs must be set in advance.  
\* This function may not operate correctly depending on the image playback device.  
\* Digital-digital switching is supported by the SQ/EQ Series.



### Built-in Speakers for the Playback of Content with Sound

All models are supported

The display unit has built-in speakers so that it can playback content with sound without the connection of external speakers. This allows maximum use of a limited space for the installation of a large-screen display

### Connection to an external device is convenient for video conferences

EQ2

Cisco Systems can be connected. The power supply for the display can be turned on and off by the Cisco Systems Device Controller. Or when connected to a Cisco Systems device, the video mode, video conference mode,<sup>1</sup> etc., can be automatically set.<sup>2</sup>

1: Video conference mode ... This enables conferences with minimal lag between video and audio.  
2: External device link settings are required on the display.  
\* This function is compatible with the Firmware Main Version 2.42/ Sub Version 02.42 or later. Please contact your sales representative with regard to details.

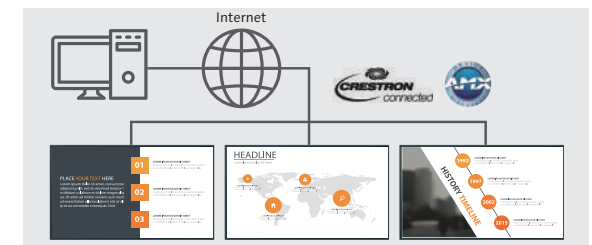


### Supports LAN Control Connection

SQ1H SQ2H SQE2 EQ2 CQE2 CQE2-IR

\*Crestron connected supported only

The display can be controlled by LAN or RS-232C. You can configure the display into your existing control system, and can control several devices simultaneously.



### USB Pass Through Function to Save Time and Effort in Meeting Preparation

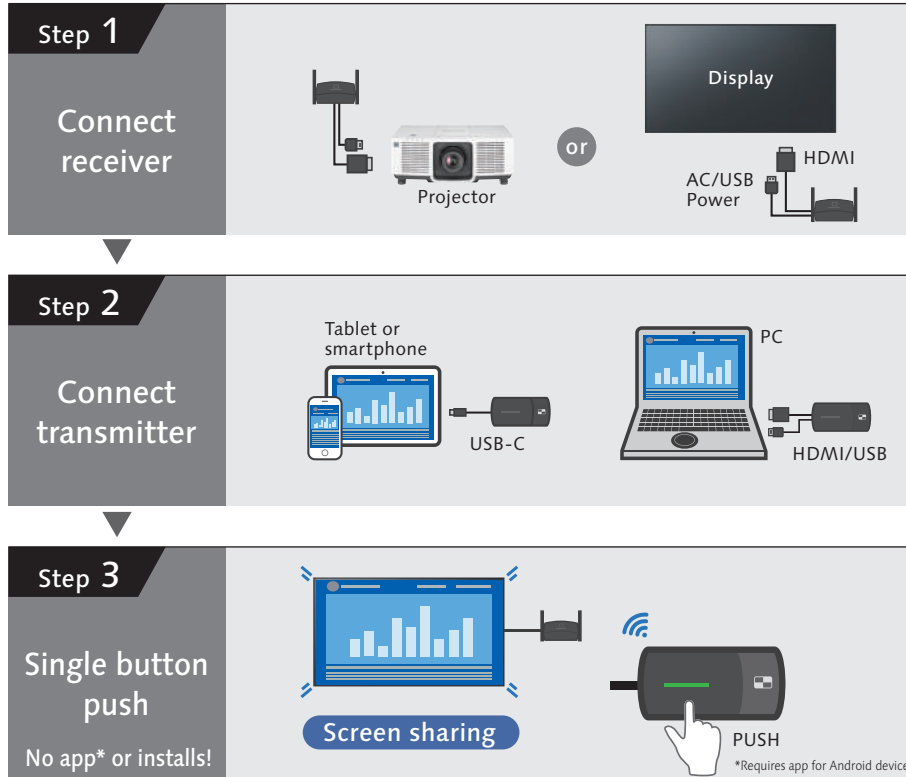
SQ2H EQ2

USB devices can be connected to the display via a USB Type-A cable and controlled using a PC connected to the EQ2 via the USB Type-C port. If a camera or speakerphone is permanently connected to the display in a conference room, a user can just plug in their PC and immediately control the device to start the meeting.





- 1 Easy connections with no app
- 2 Single button push a screen sharing
- 3 Multi-screen sharing up to 4



**Connects to mobile devices**  
Genuine Digital AV adaptor by Apple is required.

**Presents 4 screens in Full HD**  
[supports 4K]

**High-definition video**  
max. resolution: 1920 x 1080 pixels, 60p

**Low latency image**

**Connects up to 32 transmitters at once**

**Lock mode prevents interrupts**

**HDMI-CEC command compatible**

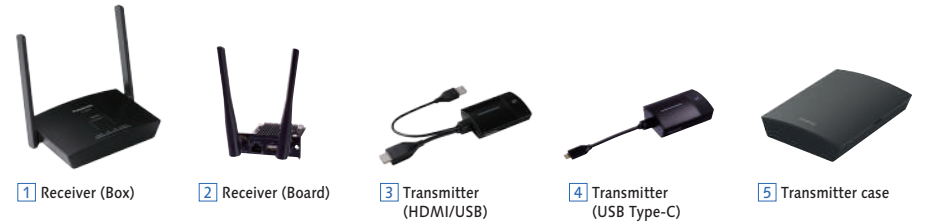
**Supports audio transmission**

**Share screen without transmitter<sup>1</sup>**

**Shared from one transmitter to multiple receivers<sup>1</sup>**

<sup>1</sup> Firmware update is required. For details, please contact your dealer

## Lineup



	Basic Set		Receiver (Box)	Receiver (Board)	Transmitter (HDMI)		Transmitter (USB Type-C)	
Model	TY-WPS1	TY-WPSC1	TY-WPR1	TY-SB01WP	TY-WP2B1	TY-WPB1	TY-WP2BC1	TY-WPBC1
Applicable product	Flat Panel Display / Projector (Panasonic and others)		PC/Tablet/ Smartphones	SQ1/SQE2/ EQ2 Series	PC/Tablet/Smartphone			
What's included?	1 Receiver (Box) x1 3 Transmitter (HDMI) x2 5 Transmitter case x1	1 Receiver (Box) x1 4 Transmitter (USB Type-C) x2 5 Transmitter case x1	1 Receiver (Box) x1	2 Receiver x1	3 Transmitter (HDMI) x2 5 Case x1	3 Transmitter (HDMI) x1	4 Transmitter (USB Type-C) x2 5 Case x1	4 Transmitter (USB Type-C) x1

## Specifications

Product	Receiver (Box)	Receiver (Board)	Transmitter (HDMI)	Transmitter (USB Type-C)
Max resolution/ Framerate	1920 x 1080/60p (max), 3840 x 2160/30p (max)		1920 x 1080/60p (max)	
Number of simultaneous connections	32		-	
Number of sources simultaneous on screen	4		-	
Data Rate	Wired: 10/100/1000 (Mbps) Wireless: Max. 867 Mbps		Max. 433 Mbps	
Frequency band	5 GHz band 5,150 MHz - 5,250 MHz 36 40 44 48 Channel			
Wireless transmission protocol	IEEE802.11a/n/ac		IEEE802.11ac	
Security	WPA/WPA2/WPA3 (WPA3-Enterprise is not supported)			
Reach (Max distance between transmitter and receiver)	Max. 30 m (When the line of sight/wave conditions are good)			
Terminals	HDMI/USB-A (female) /RJ45(LAN)		HDMI/USB-A (male)/ USB-A (female)	USB-C (male)/ USB-A (female)
Power	DC 5 V/2 A	12 V/0.9 A (Display Power supply)	DC 5 V/0.9 A	
Power consumption	10 W	10 W	4.5 W	
Operating Environment	Temperature: 0 °C to 35 °C (32 °F to 95 °F) Humidity: 20 % to 80 % (No condensation)	0 °C to 55 °C (32 °F to 131 °F) 20 % to 80 % (No condensation)	0 °C to 35 °C (32 °F to 95 °F) 20 % to 80 % (No condensation)	
Dimensions (W x H x D)	120 x 26 x 81 mm / 4.71" x 1.03" x 3.19" (Excluding antenna)	82 x 25 x 122 mm / 3.22" x 0.99" x 4.78" (Excluding antenna)	51 x 21 x 73 mm / 2.00" x 0.80" x 2.86" (Excluding cables)	51 x 26 x 73 mm / 2.00" x 1.00" x 2.86" (Excluding cables)
Weight	Approx. 181 g / 0.4 lbs	Approx. 125 g / 0.3 lbs	Approx. 110 g / 0.3 lbs	Approx. 110 g / 0.3 lbs

\*Case: Dimensions (W x H x D): 151.3 x 41.6 x 198.0 mm (6.0" x 1.7" x 7.8"),  
Weight: Approx. 315 g / 0.7 lbs

For more information, please visit the following website.  
<https://panasonic.net/cns/prodisplays/pressit>



### Fully Integrated Wireless Presentation System

No cables, no dongles, no set-top boxes.  
All you have to do is present.



TY-SBPURE  
SDM receiver



**Flexible BYOD for SQE2, SQ1H SQ2H and EQ2 Series:**  
Supports Airplay, Miracast, Chromecast



**4K UHD output resolution:**  
up to 4 windows on-screen



**100% data encryption:**  
Stable and secure system based on Linux Operating System



**Touch back function:**  
control your PC directly from the interactive display



**Advanced administration:**  
Can be managed and updated remotely using browser-based administration tools.



**HTML-5 page:** as a screensaver for on-screen display of images, videos or as digital signage player.

### Providing a more realistic meeting with the 360-degree camera speakerphone



360 degree camera speakerphone TY-CSP1	
Camera	Viewing angle: 360-degrees Shooting resolution: 2560 x 1440@30p x 4
Microphone	7
Speaker	Output 3 W
Dimensions	Diameter $\phi$ 63.4 mm/2.5" (excluding the pedestal part) x Height 285 mm/11.3"

#### Optimal Video and Audio Transmission

TY-CSP1 is a hybrid conference terminal that enables 360-degrees horizontal shooting using four cameras and features microphones and speaker that also cover a wide range of 360 degrees. It supports natural communication with people participating in web conferences with its clear sound collection and amplification.

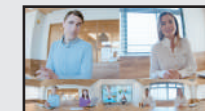
#### Simple Operation

For easy set-up and use, video, audio and power are shared to the PC via a single USB Type-C cable to save labor when preparing for a meeting. Volume and Video views can be controlled using the buttons arranged on the main unit pedestal. Operating status is instantly visible from the colored LED ring on the unit, it is possible to operate it intuitively.

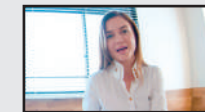
#### Installation and Portability

With a diameter of  $\phi$ 63.4 mm (2.5 inches) that is easy to grip, it is possible to freely carry it around inside the office and easily carry out web conferences. Alternatively, it can be attached to a tripod or set securely fastened with security slots.

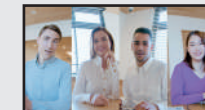
#### Equipped with various video modes



Dual View



Single View



Multi View



Surround View



Stable View

# PressIT/PressIT360 Usage cases

Introducing examples of smooth meeting proceedings in face-to-face meetings, and sharing the presence of a conference room to a remote location in hybrid meetings.



## MITSUBISHI ESTATE CO., LTD.

This wireless presentation system enables users to share their screen quickly and easily for more productive meetings. This can be combined with the PressIT360, which combines cameras, microphones and a speaker, to bring the atmosphere of the conference room to remote attendees.

More details are available online

<https://panasonic.net/cns/prodisplays/casestudies/055/>



## Panasonic Connect Co., Ltd

The 360-degree camera speakerphone "PressIT360" has 360-degree cameras in addition to a speaker and microphones. We have begun installing these in conference rooms used by our employees and customers for meetings with remote attendees.

More details are available online

<https://panasonic.net/cns/prodisplays/casestudies/054/>



## Sheraton Grande Tokyo Bay Hotel

Introduce the Wireless Presentation System "PressIT," which does not require advance preparation and allows image-sharing immediately with a simple connection.

More details are available online

<https://panasonic.net/cns/prodisplays/casestudies/052/>



## Panasonic Corporation Group Companies

The Wireless Presentation System, which does not require either cables or the installation of driver software, enables speedy screen-sharing to accommodate the flow of the meeting.

More details are available online

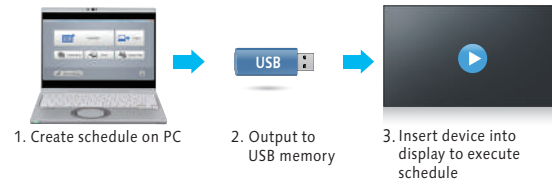
<https://panasonic.net/cns/prodisplays/casestudies/051/>

# Panasonic Software Line-up

In order to maximize the use of professional displays, Panasonic offers a variety of software and applications (some free of charge, and others for a fee).

## Content Management Software

Content Management Software makes it possible to create scheduling data and media playlist on a PC and save it to one or more USB memory. Insert the media into Space Players to execute the schedule. The software reduces complexity for temporary installations or where the device is frequently moved from place to place.



Compatible Display: SQ1H, SQ2H, SQE2, EQ2 and CQE2 Series  
<https://panasonic.net/cns/prodisplays/download/software/>

## Auto Display Adjustment Upgrade Kit (TY-VUK10)

Panasonic's free Video Wall Manager software can be used with LCD Video Wall Series displays. With this software, you can calibrate display color using a color sensor, adjust display settings, and control and manage data via PC. If software is upgraded with an optional TY-VUK10 Auto Display Adjustment Upgrade Kit, brightness and color among multiple displays can be automatically calibrated using a compatible camera (Nikon D5200/D5300/D5500/D5600/D7500)\*.



\* Available only with normal zoom lens: AF-S DX NIKKOR 18-55 mm f/3.5-5.6G VR, AF-S DX NIKKOR 18-140 mm f/3.5-5.6G ED VR, AF-S DX NIKKOR 18-55 mm f/3.5-5.6G VR II, AF-P DX NIKKOR 18-55 mm f/3.5-5.6G VR

For more information, please visit the PASS: <https://panasonic.net/cns/prodisplays/pass/>

## Screen Transfer

Screen Transfer is a software that allows a computer screen to be displayed onto one or more displays of devices that are connected by wired LAN. See the User's Manual for the operating method.



Version	Ver.2.0 or later	Ver. 1.0
Number of device connections	Max. 64 units	Max. 8 units
Bandwidth	Approx. 10 Mbps (regardless of the number of connected devices)	Approx. 80 Mbps (when 8 devices are connected)
Auto reconnection	Yes	—
Delivery status check	Yes	—

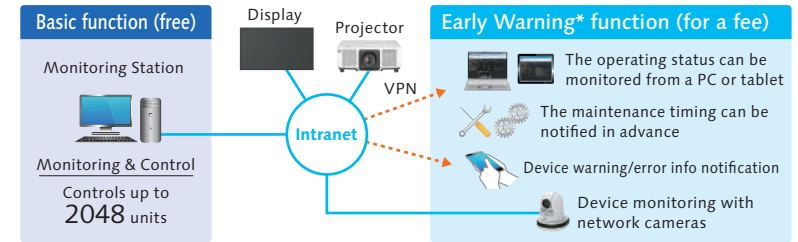
\* Video distribution can be with existing IP network infrastructure

Compatible Display: SQ1H, SQ2H and EQ2 Series  
[https://panasonic.net/cns/prodisplays/download/software/scr\\_transfer/](https://panasonic.net/cns/prodisplays/download/software/scr_transfer/)

\* The number of connections and functions may vary depending on the model. Please refer to the web for details.

## Multi Monitoring & Control Software

This free Panasonic software offers monitoring and control of up to 2,048 projectors and professional displays over a LAN network from a single PC to simplify management and maintenance while supporting stable operation. If you also purchase Early Warning Software (ET-SWA100), it will monitor the status of projectors and displays on the intranet and inform you of errors when it detects signs of trouble. This contributes to a lighter maintenance load and reduces costs.



\* Software function support varies by model.  
 \* Multi Monitoring & Control Software Ver. 2.0 or higher is required to use the Early Warning function.

### Features

- Map Display**  
Image files, such as floor plans, can be loaded, and the icon for each device can be positioned by 'Drag & Drop'.
- Auto Search of the Devices to Be Registered**  
You can select the devices to be registered from devices automatically searched on the network.<sup>1</sup>
- Other Features**
  - Monitoring of the status of each device<sup>2</sup>
  - Execution of control commands
  - Scheduling function
  - Delivery of the contents list<sup>3</sup>



## Early Warning Function (ET-SWA100)

**Maintenance Scheduling Suggestion<sup>3</sup>**  
 It is easier to plan for maintenance by predicting the approximate time for maintenance and service based on the usage monitoring.

**Video Stop Detection Using a Network Camera**  
 Images of registered projectors or displays can be monitored regularly by a supported network camera<sup>4</sup>. You can also receive a notification when an abnormality such as a blackout or an image freeze happens.

**If you install 'Multi Monitoring & Control Software,' a free 90-day trial is automatically available.**



1: Some devices can't be registered using the auto search function depending on the device status and network environment.  
 2: Software functionality varies depending on the model. 3: Function for supported projectors and professional displays only.  
 4: Panasonic Network camera (BB-S/DG-S/WV-S series), Panasonic PTZ camera (AW-UE70/HE40/HE130 series).

For more information about compatible displays, please visit the Website:  
[https://panasonic.net/cns/prodisplays/download/software/multi/dl\\_files/DeviceList-Multi\\_EN.pdf](https://panasonic.net/cns/prodisplays/download/software/multi/dl_files/DeviceList-Multi_EN.pdf)

**Early Warning function License** \* If you install \*Multi Monitoring Control Software\*, a free 90 day trial.  
 For more information, please visit the PASS: <https://panasonic.net/cns/prodisplays/pass>

# Peripheral Equipment

		High Brightness						Standard										
		TH-86SQ1HW	TH-75SQ1HW	TH-98SQ2HW	TH-86SQ2HW	TH-75SQ2HW	TH-65SQ2HW	TH-55SQ2HW	TH-50SQ2HW	TH-43SQ2HW	TH-98SQE2W	TH-86SQE2W	TH-75SQE2W	TH-65SQE2W	TH-55SQE2W	TH-50SQE2W	TH-43SQE2W	
Screen Size (inch)		86	75	98	86	75	65		55	50	43	98	86	75	65	55	50	43
<b>FUNCTION BOARD</b>																		
12G-SDI Terminal Board	TY-SB01QS	Yes	Yes	Yes	Yes	Yes	Yes		Yes	Yes	Yes	Yes <sup>1</sup>	Yes <sup>1</sup>	Yes <sup>1,2</sup>	Yes <sup>1</sup>	Yes <sup>1</sup>	Yes <sup>1</sup>	Yes <sup>1,3</sup>
Wireless Presentation System Receiver Board	TY-SB01WP	Yes	Yes	Yes	Yes	Yes	Yes		Yes	Yes	Yes	Yes	Yes	Yes	Yes	Yes	Yes	Yes
DIGITAL LINK TERMINAL BOARD	TY-SB01DL	Yes <sup>1</sup>	Yes <sup>1</sup>	Yes	Yes	Yes	Yes		Yes	Yes	Yes	Yes <sup>4</sup>	Yes <sup>4</sup>	Yes <sup>2,4,5</sup>	Yes <sup>4,5</sup>	Yes <sup>4,5</sup>	Yes <sup>4,5</sup>	Yes <sup>3,4,5</sup>
<b>MOUNTING OPTIONS</b>																		
Pedestal	TY-ST75PE9	-	-	-	-	Yes	Yes		-	-	-	-	-	-	-	-	-	-
	TY-ST55PE9	-	-	-	-	-	-		Yes	-	-	-	-	-	-	-	-	-
	TY-ST43PE9	-	-	-	-	-	-		-	Yes	Yes	-	-	-	-	-	-	-
	TY-ST43PE8	-	-	-	-	-	-		-	-	-	-	-	-	-	-	-	-
	TY-ST32PE2	-	-	-	-	-	-		-	-	-	-	-	-	-	-	-	-
Wall-hanging Bracket	TY-WK98PV1	Yes	Yes	Yes	Yes	Yes	Yes		-	-	-	-	-	-	-	-	-	-
Pitch for Wall Hanging (VESA compliant models)	800 x 500 (M8)	-	-	-	-	-	-		-	-	-	-	-	-	-	-	-	-
	800 x 400 (M8)	Yes	Yes	Yes	-	-	-		-	-	-	Yes	-	-	-	-	-	-
	600 x 500 (M8)	-	-	-	-	-	-		-	-	-	-	-	-	-	-	-	-
	600 x 400 (M8)	-	-	-	Yes	Yes	-		-	-	-	Yes	Yes	-	-	-	-	-
	600 x 400 (M6)	-	-	-	-	-	-		-	-	-	-	-	Yes	-	-	-	-
	400 x 400 (M8)	-	-	-	-	-	Yes		-	-	-	-	-	-	-	-	-	-
	400 x 400 (M6)	-	-	-	-	-	-		Yes	Yes	-	-	-	-	-	Yes	-	-
	400 x 200 (M6)	-	-	-	-	-	-		-	-	-	-	-	-	-	-	-	-
	200 x 200 (M6)	-	-	-	-	-	-		-	-	Yes	-	-	-	-	-	Yes	Yes
	100 x 100 (M4)	-	-	-	-	-	-		-	-	-	-	-	-	-	-	-	-
<b>OTHERS</b>																		
DIGITAL LINK Switcher	ET-YFB200G	Yes	Yes	-	-	-	-		-	-	-	-	-	-	-	-	-	-
Digital Interface Box	ET-YFB100G	-	-	-	-	-	-		-	-	-	-	-	-	-	-	-	-
<b>SOFTWARE</b>																		
Content Management Software (free)		Yes	Yes	Yes	Yes	Yes	Yes		Yes	Yes	Yes	Yes	Yes	Yes	Yes	Yes	Yes	-
Screen Transfer (free)		Yes <sup>2</sup>	Yes <sup>2</sup>	Yes	Yes	Yes	Yes		Yes	Yes	Yes	Yes	Yes	Yes	Yes	Yes	Yes	-
Multi Monitoring & Control Software Compatible (free)		Yes	Yes	Yes	Yes	Yes	Yes		Yes	Yes	Yes	Yes	Yes	Yes	Yes	Yes	Yes	Yes
Early Warning Software Compatible (ET-SWA100 Series) <sup>4</sup>		Yes	Yes	Yes	Yes	Yes	Yes		Yes	Yes	Yes	Yes	Yes	Yes	Yes	Yes	Yes	Yes
Video Wall Manager (free)		Yes	Yes	Yes	Yes	Yes	Yes		Yes	Yes	Yes	-	-	-	-	-	-	-
Auto Display Adjustment Upgrade Kit (TY-VUK10)		-	-	-	-	-	-		-	-	-	-	-	-	-	-	-	-

The specification has a case to change without notice.  
 1: LAN control is not supported.  
 2: The Software Main Version 1.10 or later is required.  
 3: The Software Main Version 4.40 or later is required.  
 4: The part number suffix may differ depending on the license type.

# Peripheral Equipment

		Entry														Multi-Touch Screen			
		TH-86EQ2W	TH-75EQ2W	TH-65EQ2W	TH-55EQ2W	TH-50EQ2W	TH-43EQ2W		TH-98CQE2	TH-86CQE2	TH-75CQE2	TH-65CQE2	TH-55CQE2	TH-50CQE2	TH-43CQE2	TH-86CQE2-IR	TH-75CQE2-IR	TH-65CQE2-IR	TH-55CQE2-IR
Screen Size (inch)		86	75	65	55	50	43		98	86	75	65	55	50	50	86	75	65	55
<b>FUNCTION BOARD</b>																			
12G-SDI Terminal Board	TY-SB01QS	Yes	Yes	Yes	Yes	Yes	Yes		-	-	-	-	-	-	-	-	-	-	-
Wireless Presentation System Receiver Board	TY-SB01WP	Yes	Yes	Yes	Yes	Yes	Yes		-	-	-	-	-	-	-	-	-	-	-
DIGITAL LINK TERMINAL BOARD	TY-SB01DL	Yes	Yes	Yes	Yes	Yes	Yes		-	-	-	-	-	-	-	-	-	-	-
<b>MOUNTING OPTIONS</b>																			
Pedestal	TY-ST75PE9	-	Yes	Yes	-	-	-		-	-	-	-	-	-	-	-	-	-	-
	TY-ST55PE9	-	-	-	Yes	-	-		-	-	-	-	-	-	-	-	-	-	-
	TY-ST43PE9	-	-	-	-	Yes	Yes		-	-	-	-	-	-	-	-	-	-	-
	TY-ST43PE8	-	-	-	-	-	-		-	-	-	-	-	-	-	-	-	-	-
	TY-ST32PE2	-	-	-	-	-	-		-	-	-	-	-	-	-	-	-	-	-
Wall-hanging Bracket	TY-WK98PV1	Yes	Yes	Yes	-	-	-		-	-	-	-	-	-	-	-	-	-	-
Pitch for Wall Hanging (VESA compliant models)	800 x 500 (M8)	-	-	-	-	-	-		-	-	-	-	-	-	-	-	-	-	-
	800 x 400 (M8)	-	-	-	-	-	-		Yes	-	-	-	-	-	-	-	-	-	-
	600 x 500 (M8)	-	-	-	-	-	-		-	-	-	-	-	-	-	-	-	-	-
	600 x 400 (M8)	Yes	Yes	-	-	-	-		-	Yes	Yes	-	-	-	-	Yes	Yes	-	-
	600 x 400 (M6)	-	-	Yes	-	-	-		-	-	-	Yes	-	-	-	-	-	Yes	-
	400 x 400 (M8)	-	-	-	-	-	-		-	-	-	-	-	-	-	-	-	-	-
	400 x 400 (M6)	-	-	-	Yes	Yes	-		-	-	-	-	Yes	-	-	-	-	-	Yes
	400 x 200 (M6)	-	-	-	-	-	-		-	-	-	-	-	-	-	-	-	-	-
	200 x 200 (M6)	-	-	-	-	-	Yes		-	-	-	-	-	Yes	Yes	-	-	-	-
	100 x 100 (M4)	-	-	-	-	-	-		-	-	-	-	-	-	-	-	-	-	-
<b>OTHERS</b>																			
DIGITAL LINK Switcher	ET-YFB200G	-	-	-	-	-	-		-	-	-	-	-	-	-	-	-	-	-
Digital Interface Box	ET-YFB100G	-	-	-	-	-	-		-	-	-	-	-	-	-	-	-	-	-
<b>SOFTWARE</b>																			
Content Management Software (free)		Yes	Yes	Yes	Yes	Yes	Yes		Yes	Yes	Yes	Yes	Yes	Yes	Yes	Yes	Yes	Yes	Yes
Screen Transfer (free)		Yes	Yes	Yes	Yes	Yes	Yes		-	-	-	-	-	-	-	-	-	-	-
Multi Monitoring & Control Software Compatible (free)		Yes	Yes	Yes	Yes	Yes	Yes		Yes	Yes	Yes	Yes	Yes	Yes	Yes	Yes	Yes	Yes	Yes
Early Warning Software Compatible (ET-SWA100 Series) <sup>6</sup>		Yes	Yes	Yes	Yes	Yes	Yes		Yes	Yes	Yes	Yes	Yes	Yes	Yes	Yes	Yes	Yes	Yes
Video Wall Manager (free)		-	-	-	-	-	-		-	-	-	-	-	-	-	-	-	-	-
Auto Display Adjustment Upgrade Kit (TY-VUK10)		-	-	-	-	-	-		-	-	-	-	-	-	-	-	-	-	-

The specification has a case to change without notice.

1: Some functions are not supported.

2: Please use in an environment below 35°C (95°F) when display is portrait orientation.

3: Please use in an environment below 35°C (95°F) when display is landscape orientation.

4: LAN control is not supported. Daisy chain connections with DIGITAL LINK are limited up to three units.

5: 4K signals are not supported.

6: The part number suffix may differ depending on the license type.

# Features

	High Brightness						Standard															
	TH-86SQ1HW	TH-75SQ1HW	TH-98SQ2HW	TH-86SQ2HW	TH-75SQ2HW	TH-65SQ2HW	TH-55SQ2HW	TH-50SQ2HW	TH-43SQ2HW	TH-98SQE2W	TH-86SQE2W	TH-75SQE2W	TH-65SQE2W	TH-55SQE2W	TH-50SQE2W	TH-43SQE2W						
Size (inch)	86	75	98	86	75	65					55	50	43	98	86	75	65	55	50	43		
SPECIFICATIONS	DIGITAL LINK SLOT <sup>2</sup>	Yes <sup>1</sup>	Yes <sup>1</sup>	-	-	-	-	-	-	-	-	-	-	-	-	-	-	-	-	-	-	
	Operating Time (h/day)	Intel® SDM Standard	Intel® SDM Standard	Intel® SDM Standard	Intel® SDM Standard	Intel® SDM Standard	Intel® SDM Standard	Intel® SDM Standard	Intel® SDM Standard	Intel® SDM Standard	Intel® SDM Standard	Intel® SDM Standard	Intel® SDM Standard	Intel® SDM Standard	Intel® SDM Standard	Intel® SDM Standard	Intel® SDM Standard	Intel® SDM Standard	Intel® SDM Standard	Intel® SDM Standard	Intel® SDM Standard	
	Protective Glass	24	24	24	24	24	24	24	24	24	24	24	24	24	24	24	24	24	24	24	24	24
	Touch Operation	-	-	-	-	-	-	-	-	-	-	-	-	-	-	-	-	-	-	-	-	-
	Wireless Function	-	-	Yes	Yes	Yes	Yes	Yes	Yes	Yes	Yes	Yes	Yes	Yes	Yes	Yes	Yes	Yes	Yes	Yes	Yes	Yes
IMAGE QUALITY	Color Management	12-axis		12-axis				12-axis				-	-	-	-	-	-	-	-	-	-	-
	Color Enhancement	Yes	Yes	Yes	Yes	Yes	Yes	Yes	Yes	Yes	-	-	-	-	-	-	-	-	-	-	-	-
	Dynamic Backlight	Yes	Yes	-	-	-	-	-	-	-	-	-	-	-	-	-	-	-	-	-	-	-
	Dynamic Contrast	Yes	Yes	Yes	Yes	Yes	Yes	Yes	Yes	Yes	Yes	Yes	Yes	Yes	Yes	Yes	Yes	Yes	Yes	Yes	Yes	Yes
	Frame Creation	Yes	-	-	-	-	-	-	-	-	-	-	-	-	-	-	-	-	-	-	-	-
	Gradation Smoother	Yes	Yes	Yes	Yes	Yes	Yes	Yes	Yes	Yes	-	-	-	-	-	-	-	-	-	-	-	-
	Local Dimming	Yes	Yes	-	-	-	-	-	-	-	Yes	-	-	-	-	-	-	-	-	-	-	-
RELIABILITY	Failover/Failback	Yes	Yes	Yes	Yes	Yes	Yes	Yes	Yes	Yes	Yes	Yes	Yes	Yes	Yes	Yes	Yes	Yes	Yes	Yes	Yes	
	Input Search/No Signal Auto Switch Setting/Input Signal Search	Yes	Yes	Yes	Yes	Yes	Yes	Yes	Yes	Yes	Yes	Yes	Yes	Yes	Yes	Yes	Yes	Yes	Yes	Yes	Yes	
	Audio Input Select (Switching)	Yes	Yes	Yes	Yes	Yes	Yes	Yes	Yes	Yes	-	-	-	-	-	-	-	-	-	-	-	
	Cisco Collaboration Device Verified	-	-	-	-	-	-	-	-	-	-	-	-	-	-	-	-	-	-	-	-	
	LAN Control (Network Control)	Yes	Yes	Yes	Yes	Yes	Yes	Yes	Yes	Yes	Yes	Yes	Yes	Yes	Yes	Yes	Yes	Yes	Yes	Yes	Yes	
	Memory Viewer/Auto Play	Yes	Yes	Yes	Yes	Yes	Yes	Yes	Yes	Yes	Yes <sup>2</sup>	Yes <sup>2</sup>	Yes <sup>2</sup>	Yes <sup>2</sup>	Yes <sup>2</sup>	Yes <sup>2</sup>	Yes <sup>2</sup>	Yes <sup>2</sup>	Yes <sup>2</sup>	Yes <sup>2</sup>	Yes <sup>2</sup>	
	PJLink™ Protocol	Yes	Yes	Yes	Yes	Yes	Yes	Yes	Yes	Yes	Yes	Yes	Yes	Yes	Yes	Yes	Yes	Yes	Yes	Yes	Yes	
	Power Management Mode/Eco Mode	Yes	Yes	Yes	Yes	Yes	Yes	Yes	Yes	Yes	Yes	Yes	Yes	Yes	Yes	Yes	Yes	Yes	Yes	Yes	Yes	
	Remote ID Control (Function)	Yes	Yes	Yes	Yes	Yes	Yes	Yes	Yes	Yes	-	-	-	-	-	-	-	-	-	-	-	
	Serial ID Control (Function)	Yes	Yes	-	-	-	-	-	-	-	Yes	Yes	Yes	Yes	Yes	Yes	Yes	Yes	Yes	Yes	Yes	
EXPANDABILITY	USB Media Player	Yes	Yes	Yes	Yes	Yes	Yes	Yes	Yes	Yes	Yes <sup>2</sup>	Yes <sup>2</sup>	Yes <sup>2</sup>	Yes <sup>2</sup>	Yes <sup>2</sup>	Yes <sup>2</sup>	Yes <sup>2</sup>	Yes <sup>2</sup>	Yes <sup>2</sup>	Yes <sup>2</sup>		
	Web Browser Control	Yes	Yes	Yes	Yes	Yes	Yes	Yes	Yes	Yes	-	-	-	-	-	-	-	-	-	-		
	Auto Setup	Yes	Yes	-	-	-	-	-	-	-	Yes	Yes	Yes	Yes	Yes	Yes	Yes	Yes	Yes	Yes		
	Built-in Whiteboard	-	-	Yes	Yes	Yes	Yes	Yes	Yes	-	-	-	-	-	-	-	-	-	-	-		
	Auto Volume	Yes	Yes	Yes	Yes	Yes	Yes	Yes	Yes	Yes	-	-	-	-	-	-	-	-	-	-		
	Data Cloning	USB/LAN		USB/LAN				USB/LAN				USB										
	HDMI CEC	Yes	Yes	Yes	Yes	Yes	Yes	Yes	Yes	Yes	Yes	Yes	Yes	Yes	Yes	Yes	Yes	Yes	Yes	Yes		
	Multi Input Display <sup>4</sup>	Yes	Yes	Yes	Yes	Yes	Yes	Yes	Yes	Yes	-	-	-	-	-	-	-	-	-	-		
	No Activity Power Off	Yes	Yes	Yes	Yes	Yes	Yes	Yes	Yes	Yes	Yes	Yes	Yes	Yes	Yes	Yes	Yes	Yes	Yes	Yes		
	Off Timer Setting	Yes	Yes	Yes	Yes	Yes	Yes	Yes	Yes	Yes	-	-	-	-	-	-	-	-	-	-		
CONVENIENCE	Power on Screen Delay	Yes	Yes	Yes	Yes	Yes	Yes	Yes	Yes	Yes	Yes	Yes	Yes	Yes	Yes	Yes	Yes	Yes	Yes	Yes		
	Set up Timer	Yes	Yes	Yes	Yes	Yes	Yes	Yes	Yes	Yes	Yes	Yes	Yes	Yes	Yes	Yes	Yes	Yes	Yes	Yes		
	Startup Image Settings/No signal image settings	Yes	Yes	Yes	Yes	Yes	Yes	Yes	Yes	Yes	Yes <sup>4</sup>	Yes <sup>4</sup>	Yes <sup>4</sup>	Yes <sup>4</sup>	Yes <sup>4</sup>	Yes <sup>4</sup>	Yes <sup>4</sup>	Yes <sup>4</sup>	Yes <sup>4</sup>	Yes <sup>4</sup>		
	Daisy Chain Connection	Yes	Yes	Yes (IR only)				Yes (IR only)				Yes	Yes	Yes	Yes	Yes	Yes	Yes	Yes	Yes		
	Fan-less Design	-	-	Yes	Yes	Yes	Yes	Yes	Yes	Yes	Yes	Yes	Yes	Yes	Yes	Yes	Yes	Yes	Yes	Yes		
	Multi Screen (Multi Display Setting) <sup>5</sup>	Yes	Yes	Yes	Yes	Yes	Yes	Yes	Yes	Yes	Yes	Yes	Yes	Yes	Yes	Yes	Yes	Yes	Yes	Yes		
	Portrait	Yes	Yes	Yes	Yes	Yes	Yes	Yes	Yes	Yes	Yes	Yes	Yes	Yes	Yes	Yes	Yes	Yes	Yes	Yes		
	Portrait Zoom Mode	Yes <sup>6</sup>	Yes <sup>6</sup>	Yes	Yes	Yes	Yes	Yes	Yes	Yes	-	-	-	-	-	-	-	-	-			
	USB Memory Network Setting	Yes	Yes	Yes	Yes	Yes	Yes	Yes	Yes	Yes	Yes	Yes	Yes	Yes	Yes	Yes	Yes	Yes	Yes	Yes		
	CONTROL	Creston Connected™	Yes	Yes	Yes	Yes	Yes	Yes	Yes	Yes	Yes	Yes	Yes	Yes	Yes	Yes	Yes	Yes	Yes	Yes		
AMX.D.D.		Yes	Yes	Yes	Yes	Yes	Yes	Yes	Yes	-	-	-	-	-	-	-	-	-	-			
Extron XTP		Yes	Yes	Yes	Yes	Yes	Yes	Yes	Yes	Yes	Yes	Yes	Yes	Yes	Yes	Yes	Yes	Yes	Yes			

1: Long Reach Mode compatible.  
 2: Third-party Intel® SDM-specified function boards sold separately. Panasonic cannot guarantee operation of third-party devices. The transmission method to the slot must be by HDMI™ signal.  
 3: This function on the 98/86-inch models is compatible with the Software Main Version 4.0000 or later.  
 4: The number of units that can be set as a group varies depending on the model. For details, see the operating instructions of each model.  
 5: There are restrictions on the input signal and 4-Input Multi Display function. 3G-SDI input and 4K images are not supported by the 4-Input Multi Display function. For details, see the operating instructions of each model.  
 6: These functions on the 86/75-inch models are compatible with the Software Main Version 3.0000 or later. Please contact your sales representative with regard to details.  
 7: These functions on the 98/86-inch models are compatible with the Software Main Version 3.0000 or later. Please contact your sales representative with regard to details.

Note: The specifications may vary depending on the model, even for the same function. For details, see the operating instructions of each model.

# Features

	Entry							Multi-Touch Screen											
	TH-86EQ2W	TH-75EQ2W	TH-65EQ2W	TH-55EQ2W	TH-50EQ2W	TH-43EQ2W		TH-98CQE2	TH-86CQE2	TH-75CQE2	TH-65CQE2	TH-55CQE2	TH-50CQE2	TH-43CQE2	TH-86CQE2-IR	TH-75CQE2-IR	TH-65CQE2-IR	TH-55CQE2-IR	
Size (inch)	86	75	65	55	50	43		98	86	75	65	55	50	43	86	75	65	55	
SPECIFICATIONS	DIGITAL LINK SLOT <sup>1</sup>	-	-	-	-	-		-	-	-	-	-	-	-	-	-	-	-	
	Operating Time (h/day)	18	18	18	18	18		24	16	16	16	16	16	16	16	16	16	16	
	Protective Glass	-	-	-	-	-		-	-	-	-	-	-	-	-	-	-	-	
	Touch Operation	-	-	-	-	-		-	-	-	-	-	-	-	-	-	-	-	
	Wireless Function	-	-	-	-	-		Yes	Yes	Yes	Yes	Yes	Yes	Yes	Yes	Yes	Yes	Yes	
IMAGE QUALITY	Color Management	6-axis						-	-	-	-	-	-	-	-	-	-	-	-
	Color Enhancement	Yes	Yes	Yes	Yes	Yes		-	-	-	-	-	-	-	-	-	-	-	
	Dynamic Backlight	Yes	Yes	Yes	Yes	Yes		-	-	-	-	-	-	-	-	-	-	-	
	Dynamic Contrast	Yes	Yes	Yes	Yes	Yes		Yes	Yes	Yes	Yes	Yes	Yes	Yes	Yes	Yes	Yes	Yes	
	Frame Creation	-	-	-	-	-		-	-	-	-	-	-	-	-	-	-	-	
	Gradation Smoother	Yes	Yes	Yes	Yes	Yes		-	-	-	-	-	-	-	-	-	-	-	
	Local Dimming	Yes	Yes	-	-	-		-	-	-	-	-	-	-	-	-	-	-	
Refine Enhancer	Yes	Yes	Yes	Yes	Yes		-	-	-	-	-	-	-	-	-	-	-		
RELIABILITY	Failover/Failback	Yes	Yes	Yes	Yes	Yes		-	-	-	-	-	-	-	-	-	-	-	
	Input Search/No Signal Auto Switch Setting/Input Signal Search	Yes	Yes	Yes	Yes	Yes		-	-	-	-	-	-	-	-	-	-	-	
EXPANDABILITY	Audio Input Select (Switching)	Yes	Yes	Yes	Yes	Yes		-	-	-	-	-	-	-	-	-	-	-	
	Cisco Collaboration Device Verified	Yes	Yes	Yes	Yes	Yes		-	-	-	-	-	-	-	-	-	-	-	
	LAN Control (Network Control)	Yes	Yes	Yes	Yes	Yes		Yes	Yes	Yes	Yes	Yes	Yes	Yes	Yes	Yes	Yes	Yes	
	Memory Viewer/Auto Play	Yes	Yes	Yes	Yes	Yes		Yes <sup>2</sup>	Yes <sup>2</sup>	Yes <sup>2</sup>	Yes <sup>2</sup>	Yes <sup>2</sup>	Yes <sup>2</sup>	Yes <sup>2</sup>	Yes <sup>2</sup>	Yes <sup>2</sup>	Yes <sup>2</sup>	Yes <sup>2</sup>	
	PJLink™ Protocol	Yes	Yes	Yes	Yes	Yes		Yes	Yes	Yes	Yes	Yes	Yes	Yes	Yes	Yes	Yes	Yes	
	Power Management Mode/Eco Mode	Yes	Yes	Yes	Yes	Yes		-	-	-	-	-	-	-	-	-	-	-	
	Remote ID Control (Function)	Yes	Yes	Yes	Yes	Yes		-	-	-	-	-	-	-	-	-	-	-	
	Serial ID Control (Function)	Yes	Yes	Yes	Yes	Yes		-	-	-	-	-	-	-	-	-	-	-	
	USB Media Player	Yes	Yes	Yes	Yes	Yes		Yes <sup>2</sup>	Yes <sup>2</sup>	Yes <sup>2</sup>	Yes <sup>2</sup>	Yes <sup>2</sup>	Yes <sup>2</sup>	Yes <sup>2</sup>	Yes <sup>2</sup>	Yes <sup>2</sup>	Yes <sup>2</sup>	Yes <sup>2</sup>	
	Web Browser Control	Yes	Yes	Yes	Yes	Yes		-	-	-	-	-	-	-	-	-	-	-	
CONVENIENCE	Auto Setup	Yes	Yes	Yes	Yes	Yes		-	-	-	-	-	-	-	-	-	-	-	
	Built-in Whiteboard	Yes	Yes	Yes	Yes	Yes		-	-	-	-	-	-	-	-	-	-	-	
	Auto Volume	Yes	Yes	Yes	Yes	Yes		-	-	-	-	-	-	-	-	-	-	-	
	Data Cloning	USB/LAN						-	-	-	-	-	-	-	-	-	-	-	
	HDMI CEC	Yes	Yes	Yes	Yes	Yes		-	-	-	-	-	-	-	-	-	-	-	
	Multi Input Display <sup>3</sup>	-	-	-	-	-		-	-	-	-	-	-	-	-	-	-	-	
	No Activity Power Off	Yes	Yes	Yes	Yes	Yes		-	-	-	-	-	-	-	-	-	-	-	
	Off Timer Setting	Yes	Yes	Yes	Yes	Yes		-	-	-	-	-	-	-	-	-	-	-	
	Power on Screen Delay	Yes	Yes	Yes	Yes	Yes		-	-	-	-	-	-	-	-	-	-	-	
	Set up Timer	Yes	Yes	Yes	Yes	Yes		-	-	-	-	-	-	-	-	-	-	-	
Startup Image Settings/No signal image settings	Yes	Yes	Yes	Yes	Yes		Yes <sup>4</sup>	Yes <sup>4</sup>	Yes <sup>4</sup>	Yes <sup>4</sup>	Yes <sup>4</sup>	Yes <sup>4</sup>	Yes <sup>4</sup>	Yes <sup>4</sup>	Yes <sup>4</sup>	Yes <sup>4</sup>	Yes <sup>4</sup>		
CONTROL / INSTALLATION	Daisy Chain Connection	Yes (IR only)						-	-	-	-	-	-	-	-	-	-	-	
	Fan-less Design	Yes	Yes	Yes	Yes	Yes		-	-	-	-	-	-	-	-	-	-	-	
	Multi Screen (Multi Display Setting) <sup>5</sup>	Yes	Yes	Yes	Yes	Yes		-	-	-	-	-	-	-	-	-	-	-	
	Portrait	Yes	Yes	Yes	Yes	Yes		Yes	Yes	Yes	Yes	Yes	Yes	Yes	Yes	Yes	Yes	Yes	
	Portrait Zoom Mode	Yes	Yes	Yes	Yes	Yes		-	-	-	-	-	-	-	-	-	-	-	
	USB Memory Network Setting	Yes	Yes	Yes	Yes	Yes		-	-	-	-	-	-	-	-	-	-	-	
CONTROL	Crestron Connected™	Yes	Yes	Yes	Yes	Yes		-	-	-	-	-	-	-	-	-	-	-	
	AMX.D.D.	Yes	Yes	Yes	Yes	Yes		-	-	-	-	-	-	-	-	-	-	-	
	Extron XTP	-	-	-	-	-		-	-	-	-	-	-	-	-	-	-		

1: Third-party Intel® SDM-specified function boards sold separately. Panasonic cannot guarantee operation of third-party devices. The transmission method to the slot must be by HDMI™ signal.  
 2: The playable application format, GUI, and operation procedure for the SQE2 and CQE2 Series' Media Player function areas different from of other models.  
 3: The number of units that can be set as a group varies depending on the model. For details, see the operating instructions of each model.  
 4: The SQE2 and CQE2 series can display any image only when there is no external signal input. Image settings when starting up the display are not supported.  
 5: There are restrictions on the input signal and 4-Input Multi Display function. 3G-SDI input and 4K images are not supported by the 4-Input Multi Display function. For details, see the operating instructions of each model.

Note: The specifications may vary depending on the model, even for the same function. For details, see the operating instructions of each model.



# Panasonic CONNECT

Weights and dimensions shown are approximate. Depending on the temperature or humidity conditions, uneven brightness may be observed. This is not a malfunction. This unevenness will disappear while applying current continuously. If not, consult the distributor. Specifications and appearance are subject to change without notice. Product availability differs depending on region and country. This product may be subject to export control regulations. Windows, and PowerPoint are trademarks of Microsoft Corporation in the United States and other countries. Android is a registered trademark or trademark of Google Inc. Macintosh, Mac, Mac OS X, iPad, iPhone, iPod touch and iTunes are trademarks of Apple Inc., registered in the U.S. and other countries. Intel® is registered trademark or trademark of Intel Corporation, registered in the U.S. and other countries and regions or registered trademarks. HDMI, the HDMI logo, and High-Definition Multimedia Interface are trademarks or registered trademarks of HDMI Licensing LLC in the United States and other countries. Crestron Connected™ is a trademark of Crestron Electronics, Inc. Miracast are trademarks or registered trademarks of Wi-Fi Alliance. HDBaseT is a trademark of the HDBaseT Alliance. Cisco WebEx is a trademark or registered trademark of Cisco Systems, Inc. and/or its affiliated entities in the United States and other countries. All other trademarks are the property of their respective trademark owners. Images on screen are simulated. ©Panasonic Connect Co., Ltd. 2023. All rights reserved.



For the latest information about Panasonic Professional Displays, please visit:

Professional Display Website

<https://eu.connect.panasonic.com/gb/en/product-groups/visual-system-solutions-professional-displays>

Facebook: <https://www.facebook.com/PanasonicVisualSolutionsEU>

Instagram: <https://www.instagram.com/panasonicvisual>

LinkedIn: <https://www.linkedin.com/company/panasonic-connect-europe>

Youtube: <https://www.youtube.com/user/PanasonicBusiness>

Note: Following the shift of the Panasonic Group to a holding company system, the Connected Solutions Company of the Panasonic Corporation has changed to *Panasonic Connect Co., Ltd.* as of April 1, 2022.

All information included here is valid as of December 2023

CT23-U02PF