

## PTZ Camera Systems



For more information, please visit the products page.

Category	Model	Resolution	Zoom	Field of View	Frame Rate	Other Features
High-end	AW-UE160W/K	4K Professional 12G SDI ST 2110	20x	75.1°	1" MOS*2, 4K 60p	NDI® High Bandwidth & NDI® HX2 Supported, PoE++, HDMI™, Fiber, SRT Alliance, V-Log, 5G mobile router*3 compatible, High speed Max. 2x in HD, Auto Framing Feature
	AW-UE150W/K	4K Professional 12G SDI	20x	75.1°	1" MOS, 4K 60p	NDI® HX2 Supported*4, PoE++, HDMI™, Fiber, SRT Alliance, V-Log
	AW-HE145W/K	3G SDI	20x	75.1°	1" MOS, HD 60p	NDI® HX2 Supported*5, PoE++, HDMI™, SRT Alliance
	AW-UE100W/K	4K Professional 12G SDI	24x	74.1°	1/2.5" MOS, 4K 60p	NDI® High Bandwidth & NDI® HX2 Supported*6, PoE++, HDMI™, SRT Alliance
Standard	AW-UE80W/K	4K Professional 3G SDI	24x	74.1°	1/2.5" MOS, 4K 60p	NDI® High Bandwidth & NDI® HX2 Supported, PoE++, HDMI™, SRT Alliance, Auto Tracking Built-in
	AW-UE50W/K	4K Professional 3G SDI	24x	74.1°	1/2.5" MOS, 4K 30p	NDI® HX2 Supported, PoE+, HDMI™, USB, SRT Alliance, Auto Tracking Built-in, zoom Certified
	AW-UE40W/K	4K Professional	24x	74.1°	1/2.5" MOS, 4K 30p	NDI® HX2 Supported, PoE+, HDMI™, USB, SRT Alliance, Auto Tracking Built-in, zoom Certified
	AW-UE30W/K	4K Professional	20x	74.1°	1/2.5" MOS, 4K 30p	PoE+, HDMI™, USB, SRT Alliance, Auto Tracking Built-in
Entry	AW-UE20W/K	4K Professional 3G SDI	12x	71.0°	1/2.8" MOS, 4K 30p	PoE+, HDMI™, USB, zoom Certified
	AW-UE4WG/KG	4K Professional	4x	111°	1/2.5" MOS, 4K 30p	PoE, HDMI™, USB, zoom Certified, Certified for Microsoft Teams*7
Outdoor	AW-UR100	4K Professional 12G SDI	24x	74.1°	1/2.5" MOS, 4K 60p	NDI® High Bandwidth & NDI® HX2 Supported, PoE++, Fiber, SRT Alliance

\*1: Activation with the separately sold software key AW-SFU60 is required. \*2: Effective Size. \*3: USB tethering support. \*4: NDI® HX2 support is available when the firmware version is 2.94 or later. \*5: NDI® HX2 support is available when the firmware version is 1.13 or later. \*6: NDI® HX2 support is available when the firmware version is 1.56 or later. \*7: Microsoft and Microsoft Teams are trademarks or registered trademarks of Microsoft Corporation in the United States and/or other countries. \*NDI® is a video connectivity technology and is registered as a trademark by Vizrt NDI AB in the United States and other countries.

### Remote Camera Controller



AW-RP150

- IP Control 200
- SERIAL Control 5
- Touch Panel
- Big Joystick
- PoE+



AW-RP60

- IP Control 200
- SERIAL Control 5
- Joystick
- PoE



AW-RM50AG

- INFRARED Control 4

## Software

For more information, please visit the products page.



### Software

#### Media Production Suite

Basic Functions **Free** Device View / PTZ Control

Plug-ins **Additional Fee**



Auto Tracking Software Key  
AW-SF100/AW-SF200

90-day Free Trial



Visual Presets Software Key  
AW-SF300

90-day Free Trial



Video Mixer Software Key  
AW-SF400

30-day Free Trial

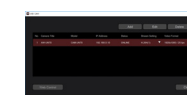


Available from CY2025 Q2  
Advanced Auto Framing  
Software Key



SMPT E ST 2110 Supported  
Optional Software Key  
AW-SFU60

Additional Fee



PTZ Virtual USB Driver  
**Free**

## IT/IP Platform KAIROS

Incredible Productivity

For more information, please visit the products page.



### KAIROS

Main Frame	Control Panel	GUI Software
<p><b>Kairos Core 2000</b></p> <p>AT-KC2000 (Still Storage 32GB) ST 2110 (4K) 8 in / 10 out</p> <p>AT-KC2000S1 (Still Storage 32GB) ST 2110 (4K) 16 in / 10 out</p>	<p><b>Kairos Control</b></p> <p>AT-KC10C1 (24XP)</p>	<p><b>Kairos Creator AT-SFC10</b></p> <p>OS: Windows10/11, macOS (Monterey/Ventura/Sonoma)</p>
<p><b>Kairos Core 200</b></p> <p>AT-KC200 (Still Storage 7GB) ST 2110 (4K) 8 in / 10 out</p> <p>AT-KC200L1<sup>NEW</sup> (Still Storage 7GB) SDI Max. 16 in / 8 out</p>	<p><b>Kairos Control</b></p> <p>AT-KC10C2 (12XP)</p>	<p><b>NEW Kairos Emulator*1</b> <b>Free</b></p> <p>OS: Windows10/11</p>
<p><b>Option Hardware</b></p> <p><b>SDI I/O Board Option AT-KC20M1</b></p> <p>8 input terminals / 4 output terminals per unit. Max. 4 units can be mounted on AT-KC200/2000.</p>		
<p><b>Option Software Key</b></p> <ul style="list-style-type: none"> <li>• Touch Control Panel SW option AT-SFTC10 (OS: Windows10/11)</li> <li>• Kairos Core Manager AT-SFCM10 (OS: Windows10/11)</li> <li>• Audio Mixer Option AT-SF005</li> <li>• RossTalk Option*2 AT-SFE01</li> <li>• NMOS Option*3 AT-SFE03</li> <li>• Kairos Creator subset software <b>Free</b></li> </ul>		

\*1: Supported by KAIROS version 1.7 or after. \*2: RossTalk, Ross, and XPression, are trademarks or registered trademarks of Ross Video Limited. \*3: NMOS is a protocol standardized by AMWA for controlling and managing devices via IP networks.

## Systems Cameras

For more information, please visit the products page.



AK-PLV100GSJ



12G SDI <sup>1</sup> ST 2110 <sup>2</sup>	Super 35mm	PL Mount	ND Filter
Super35	V-Log	Native ISO 800/2500	
	CAM-CCU 2 km (UCU700)/1.2 km (HCU250)	Intercom XLR x 1	



AK-UCX100

Available from CY2024 Q4



12G SDI x2 ST 2110	19.29 MP MOS	2/3 Bayonet	CCU Less
JPEG	ND/FX Filter	High-speed 4K: Max. 2x	High-speed HD: Max. 4x
	SRTALLIANCE	DC Out 1A/2.5A	Intercom XLR x 2



AK-UC4000GSJ  
AK-UC4000GJ



12G SDI <sup>1</sup> ST 2110 <sup>2</sup>	11.14MP MOS	2/3 Bayonet	ND/CC Filter
JPEG	High-speed Max. 4x	CAM-CCU 2 km	DC Out 1A/2.5A
	Intercom XLR x 2	Optional Build-up Unit	



AK-UC3300GSJ  
AK-UC3300GJ



12G SDI <sup>1</sup> ST 2110 <sup>2</sup>	11.14MP MOS	2/3 Bayonet	ND Filter
JPEG	High-speed 2x	CAM-CCU 2 km	DC Out 1A/2.5A
	Intercom XLR x 2		



AK-HC3900GSJ  
AK-HC3900GJ



ST 2110 <sup>3</sup> Upgradable (option)	Large MOS	2/3 Bayonet	ND Filter
4K Upgrade	CAM-CCU 1.2 km	Intercom XLR x 1	

Studio Camera

Camera Control Unit

Camera Fiber Adapter



NEW

AK-UCU710PSJ/ESJ/PJ/EJ  
AK-UCU700PSJ/ESJ/PJ/EJ

AK-PLV100	AK-UC4000	AK-UC3300
-----------	-----------	-----------



AK-HCU250PSJ/ESJ/PJ/EJ  
AK-HCU250PTJ

AK-PLV100	AK-HC3900
-----------	-----------



Available from CY2024 Q4

AK-CFA100PSJ/ESJ

AK-PLV100GSJ	AK-UCX100
--------------	-----------

\*1: When connection with AK-UCU700 Series.  
\*2: When connection with AK-UCU710 or AK-UCU700 + AK-NP701G.  
\*3: ST 2110 (HD only) is required AK-SFC391 software key.

For more information, please visit the website >>> <https://pro-av.panasonic.net/en/>



## Box Style Camera

For more information, please visit the products page.



Box Style Camera



Available from CY2024 Q4

AW-UB50



Full MOS	4K 60p	V-log
TC IN/OUT	GENLOCK IN	PoE+ HDMI



Available from CY2024 Q4

AW-UB10



4/3" MOS	4K 60p	V-log L
TC IN/OUT	GENLOCK IN	PoE+ HDMI

## Live Switchers

For more information, please visit the products page.



1/ME Switcher



AV-UHS500



Max. 16 Inputs	Max. 15 Outputs
Max. 2 P-in-P	2 ch Multiviewer
4 Aux Buses	
NDI® High Bandwidth & NDI® HX2 Supported*	
*Option AV-UHS5M6G is required.	



AV-HSW10

Max. 9 inputs	Max. 6 outputs	2 Keys
2 Aux Buses	P-in-P	Multiviewer
NDI® High Bandwidth & NDI® HX2 Supported		
SRTALLIANCE		
RTMP	USB Video Class	

Software

Software Control Panel for AV-UHS500

AV-SF500 **Free**  
OS: Windows10/11, macOS (Monterey/Big Sur/Catalina)

Software Control Panel for AV-HSW10

AV-SF10 **Free**  
OS: Windows10/11, macOS (Monterey/Ventura/Sonoma)

## Cinema Cameras

For more information, please visit the products page.



Cinema Camera



VariCamLT



Super 35mm	EF/PL* mount	Native ISO 800/5000
ProRes	expressP2 slot x 1	SD slot x 1
Raw Out: 3G-SDI x 2	Light Weight	Cine Live
* Option		



AU-EVA1



Super 35mm	EF mount	Native ISO 800/2500
5.7K	SD slot x 2	
Raw Out: 6G-SDI x 1	Light Weight	Cine Live

## Professional Camera Recorders

For more information, please visit the products page.



CX Series



AJ-CX4000GJ



11.14MP MOS	2/3 Bayonet	MOV	P2 MXF
expressP2 slot x 1	SD slot x 1	NDI® HX1 Supported	
RTSP/RTMP/RTMP/RTMPS			



AG-CX350



1" MOS	24.5 mm	20 x	MOV/AVCHD
P2 MXF	V-Log	microP2 slot x 2	NDI® HX1 Supported
RTSP/RTMP/RTMP/RTMPS			

P2HD Series



AJ-PX5100GJ



2/3" 3MOS	2/3 Bayonet	P2 MXF
P2 slot x 2	microP2 slot x 2	

For more information, please visit the website >>> <https://pro-av.panasonic.net/en/>

