

**Description**

This ceiling mount bracket is used when mounting a Panasonic projector to high ceilings.

**NOTE:** This ceiling mount bracket cannot be used by itself. Combine it with the optional ET-PKE16B bracket assembly.

**Specifications**

Vertical correction angle:	±10°
Horizontal slant correction angle:	±5°
Horizontal turn correction angle:	±10°
Dimensions (W × H × D):	400 × 909–1,269 × 400 mm (15-3/4" × 35-25/32"–49-31/32" × 15-3/4")
Weight:	Approx. 17 kg* (37.5 lbs*)
Applicable bracket assembly:	ET-PKE16B

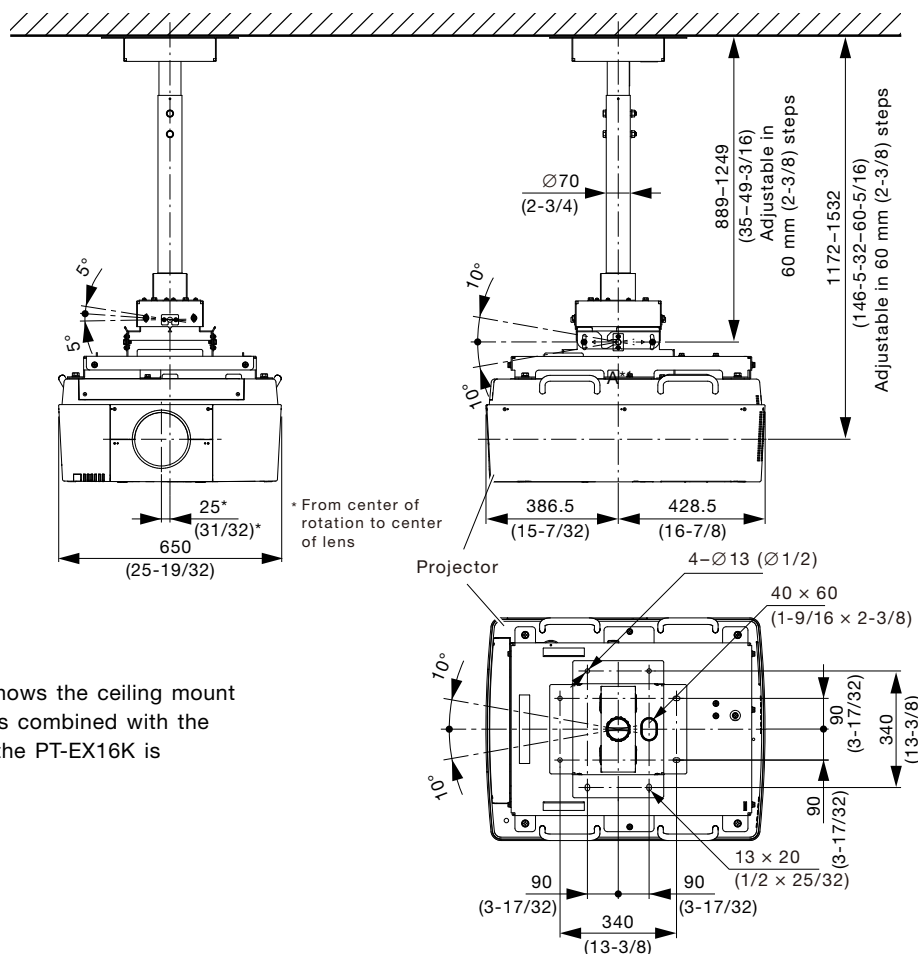
\* Average value. May differ depending on models.

**Parts**

Projector mount bracket A (pole included) . . . . .	1	Hexagonal nut (M10) . . . . .	2
Projector mount bracket B (pole included) . . . . .	1	Snap pin . . . . .	2
Pole joint bolt . . . . .	2	Screws (M5 × 10) . . . . .	4
Washer (M10) . . . . .	2		

**Caution:**

- Mounting should be done by a qualified technician.
- Make sure that the mounting (ceiling) area has sufficient strength.
- Read the enclosed mounting instructions thoroughly before starting.
- Do not use an electric screwdriver or impact driver to tighten screws. Use a torque driver or hexagon torque wrench and tighten screws to the torque specified in the instructions.
- When the product is no longer going to be used, have it disposed of quickly by a professional disposal service.

**Dimensions**

The illustration shows the ceiling mount bracket when it is combined with the ET-PKE16B and the PT-EX16K is attached.

unit : mm (inch)

**NOTE:** This illustration is not drawn to scale.

Weights and dimensions shown are approximate. Specifications subject to change without notice.