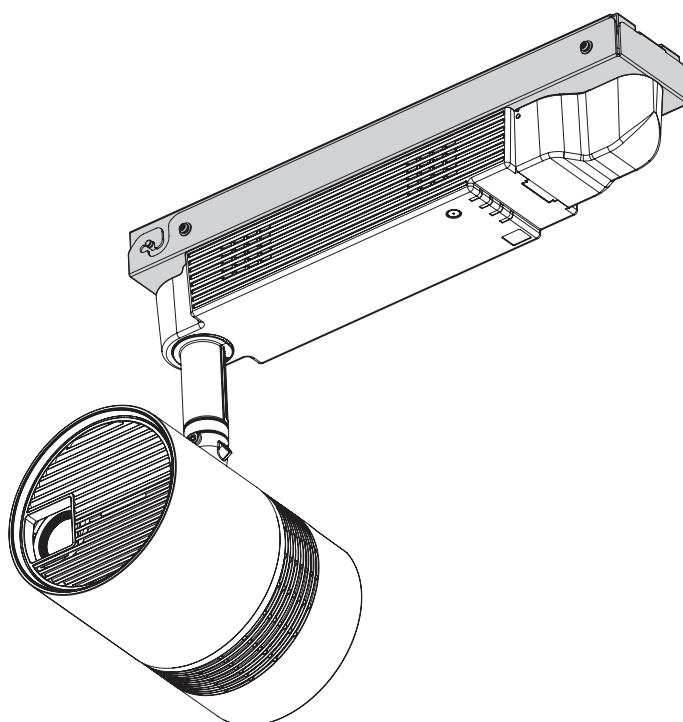


Installation Instructions

Ceiling Kit

Model No. **ET-JPC100BE**
ET-JPC100WE



ENGLISH

FRANÇAIS

ESPAÑOL

DEUTSCH

ITALIANO

* Above illustration is shown in combination of this product and optional projector.

Thank you for purchasing this Panasonic product.

- To customers
This manual is intended for use by installation personnel. Be sure to employ certified personnel to perform the installation.
After installation, have the installation personnel return this manual to you, and save it for future use.
When moving or removing the projector, give this manual to the certified personnel and have them perform the procedure.
- To installation personnel
Read the instructions thoroughly and then perform the installation correctly and safely.
Be sure to read through the section entitled “Read this first!” (→ pages 2 to 3) before proceeding with the installation.
After installation, return this manual to the customer.

Read this first!

WARNING: THIS APPARATUS MUST BE EARTHED.

Proper grounding is required to ensure personal safety.

WARNING**Ask a qualified technician or your dealer to perform the installation work.**

Inadequate installation may result in fire, electric shocks, or falling of the projector.

- Follow the instructions specified in "Installation" of this manual, and perform secure installation.
- To be installed by qualified personnel only.
- Do installation in accordance with your country regulations.

Before performing the installation work, be sure to shut off the power supply of the indoor wiring.

Failing to do so may cause a fire or electric shock.

Install the certified wiring circuit breaker (breaker with rated current of 16 A or less) in a location that can be easily reached.

Insufficient capacity of the indoor wiring for the power supply or incorrect installation may result in a fire or electric shock.

- If anything abnormal occurs, immediately shut off the power supply of the indoor wiring with the certified wiring circuit breaker.

To prevent wiring damage or abrasion, do not expose wires to the edge of sheet metal or any other sharp objects.

Failing to do so may cause a fire or electric shock.

Do not connect electrical wiring via this product.

Doing so may cause a fire.

Make sure that your footing is safe and secure during installation.

- If your footing is not secure, you may fall down or drop the projector, and an injury may result.

Install the product in a way that is suitable for the structure and material of the installation location.

Performing the installation work in an incorrect way may cause a fire, electric shock, or falling accident.

Do not mount the product to a ceiling that is unable to withstand the weight.

Doing so may cause injury due to falling or a fire or electric shock.

Do not install the product in a location where the intake and exhaust of the projector will be blocked.

Heat accumulating inside the projector may cause a fire.

Do not set up the projector in humid or dusty places or in places where the projector may come into contact with oily smoke or steam.

Using the projector under such conditions will result in fire, electric shocks or deterioration of components. Deterioration of components may cause the projector which is mounted on the ceiling to fall down.

Do not install other than a specified projector.**Do not install a projector in a way other than specified.**

Doing so may cause a falling accident or a fire or electric shock.

Be sure to use the supplied parts that make up this product when installing the product.

Insufficient strength or improper installation may cause injury due to falling or a fire or electric shock.

Do not dismantle or modify this product.

Doing so may cause it to break or injury due to falling.

Do not do anything that might damage the power cord.

If the power cord is used while damaged, electric shocks, short-circuits or fire will result.

- Do not damage the power cord, make any modifications to it, place it near any hot objects, bend it excessively, twist it, pull it, place heavy objects on top of it or wrap it into a bundle.

Completely insert the power connector into the projector terminal.

If the power connector is not inserted correctly, electric shocks or overheating will result.

Do not allow children to reach the supplied screws and the string.

Accidentally swallowing them can cause physical harm.

- If swallowed, seek medical advice immediately.

Read this first! (continued)

CAUTION

Do not install this product in a location where salt damage occurs or corrosive gas is generated.

Doing so may cause falling due to corrosion.

Do not use the projector together with dimmers such as a light controller.

Doing so will result in the damage to the components inside the projector and will cause fire.

Do not put excessive force on the projector by hanging on the projector or dangling any object.

Doing so will result in falling of the projector and injuries.

Mount this product in the specified orientation to a flat ceiling or a ceiling with a slope of up to 45°.

Mounting this product to an inappropriate surface such as to a wall, floor, or ceiling with a steep slope or mounting it in the wrong orientation may cause a falling accident.

Install the ceiling mount screws and bolts so that they do not touch any metal inside the ceiling.

If they touch metal inside the ceiling, a fire or electric shock may result.

When disconnecting the power cord, be sure to hold the power connector.

If the power cord itself is pulled, the lead will become damaged, and fire, short-circuits or serious electric shocks will result.

- **Panasonic Connect Co., Ltd. disclaims all liability for any accidents or any damage caused by the installation of the ceiling mount bracket using methods that are not described in these Installation Instructions or methods that do not use the parts specified in these Instructions.**
- **If products are no longer being used, they should be dismantled and removed by the certified personnel as soon as possible.**



Contents

Read this first!	2
Installation precautions	5
Product composition.....	6
Before installation	7
Items to prepare	7
Names of parts	8
Installation orientation.....	9
Installation position	10
Installation.....	13
Main procedures.....	13
Preparing the adapter cover	13
Mounting the ceiling mount bracket to the ceiling.....	13
Connecting the indoor wiring for the power supply	17
Changing the orientation of the main unit of the projector.	18
Mounting the projector mount bracket to the projector	19
Mounting the projector to the ceiling mount bracket.....	21
Connecting the power cord to the projector.....	23
Adjusting the projection position.....	25
Specifications	27
External dimension diagram	27
Assembly dimension diagram.....	27

Installation precautions

- Install this product in a place that is strong enough to withstand the weight of both the projector and product.
- Install this product in a place where the intake and exhaust of the projector will not be blocked.
- Do not install this product in a place near the sea or where corrosive gas is generated.
- Do not install this product in places subject to sudden temperature changes, such as near an air conditioner air outlet or lighting equipment (studio lamps, etc.).
- Before performing the work, be sure to shut off the power supply to the room by, for example, turning off the wiring circuit breaker.
- This product must be installed in accordance with the applicable installation code by a qualified personnel, familiar with the construction and operation of the product and hazards involved.
- Single copper wires with a diameter of 1.6 mm (1/16") to 2.0 mm (5/64") can be used (are supported) for the indoor wires that connect to the terminal block of the ceiling mount bracket.
- If wallpaper is affixed to the surface where the product will be mounted to the ceiling, make sure the wallpaper paste is sufficiently dry before installing this product.
Failing to do so may result in rusting or discoloration of the paint.
- The inrush current for the projectors supported by this product is 70 A (when power supply voltage of 100 V) to 100 A (when power supply voltage of 240 V).

Give consideration to the specifications of any wiring equipment that will be connected, including the wiring circuit breaker and switches, before carrying out the wiring work.

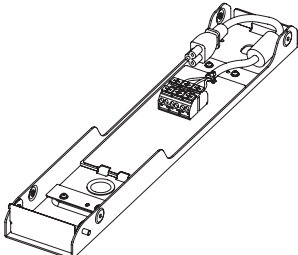
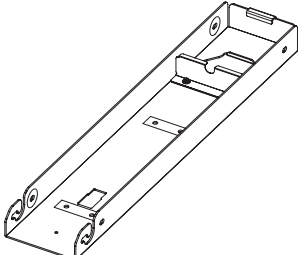
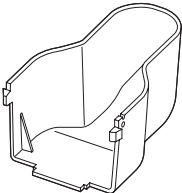
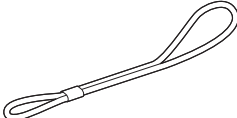
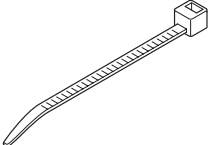

- With the exception of wood screws, use the following tightening torques for the screws and bolts.

Size	Tightening torque
M4	1.2 ±0.3 N•m
M10	20 ±1 N•m

- When tightening screws or bolts, use a torque driver or torque wrench. Do not use electrical drivers or impact drivers.

Product composition

Check that the package contains the following parts. The number enclosed in < > is the quantity.

<p>Ceiling mount bracket <1></p> 	<p>This ceiling mount bracket is mounted to the ceiling to support the entire product. It has a terminal block for connecting the indoor wiring for the power supply, and a power cord that is connected to the projector to supply it with power.</p>
<p>Projector mount bracket <1></p> 	<p>This projector mount bracket is mounted to the projector and then attached to the ceiling mount bracket.</p>
<p>Adapter cover <1> (ET-JPC100BE: TKFE28802) (ET-JPC100WE: TKFE28801)</p> 	<p>This adapter cover hides the <AC IN> socket part of the projector.</p>
<p>String (6103430249) <1></p> 	<p>This is to prevent the adapter cover from dropping.</p>
<p>Fixer cable tie (TMME244) <1></p> 	<p>This is used for fix the indoor wiring for the power supply to the ceiling mount bracket so as to stop tension being applied.</p>
<p>Screw, captive washer (M4 x 8) <8> (ET-JPC100BE: XYN4+F8FJK) (ET-JPC100WE: 4112055002)</p> 	<p>These are used for the mounting and attaching of the brackets.</p>

Attention

- After removing the product from the package, dispose of the packing material appropriately.
- If any part is missing, contact the dealer.
- Store small parts appropriately in a place out of the reach of infants and small children.

Note

- Please note that an assembly test has been performed using all parts so this product may have screw tightening marks around the parts where the ceiling mount bracket and projector mount bracket fit together.
- The product composition, projector, combination of the product and projector, etc. shown in the illustrations may differ from the actual equipment.

Before installation

Items to prepare

The items that you need to provide in advance in addition to the supplied parts to mount this product to a ceiling are as follows.

- **This product is a bracket for mounting the projector (separately sold product) to a ceiling. Use it mounted to a compatible projector.**

Compatible projectors: PT-JW130FBE / PT-JW130FWE / PT-JW130FBK / PT-JW130FWK

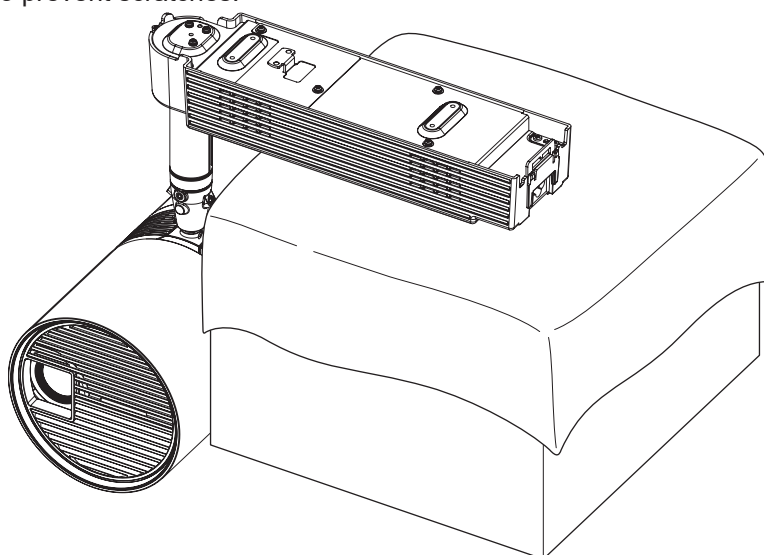
- **The following parts are required when mounting the ceiling mount bracket to the ceiling. Obtain commercially available parts suitable for the structure of the ceiling and installation method.**

The number enclosed in < > is the quantity.

Structure of mounting area	Commercially available parts
When concrete beams or similar (Bolt diameter: M10)	Ceiling mount bolt <2> Hexagonal nut <6> Flat washer <6> Spring washer <4> Anchor nut or curled plug <2>
When wooden beams or similar (Bolt diameter: M10)	Ceiling mount bolt <2> Hexagonal nut <8> Flat washer <8> Spring washer <4>
When ceiling surface with wood reinforcement members	Ensure there will be thread engagement of at least 16 mm (5/8") in the ceiling reinforcement member; wood screw with nominal diameter of 3.1 mm (1/8") <4>

Note

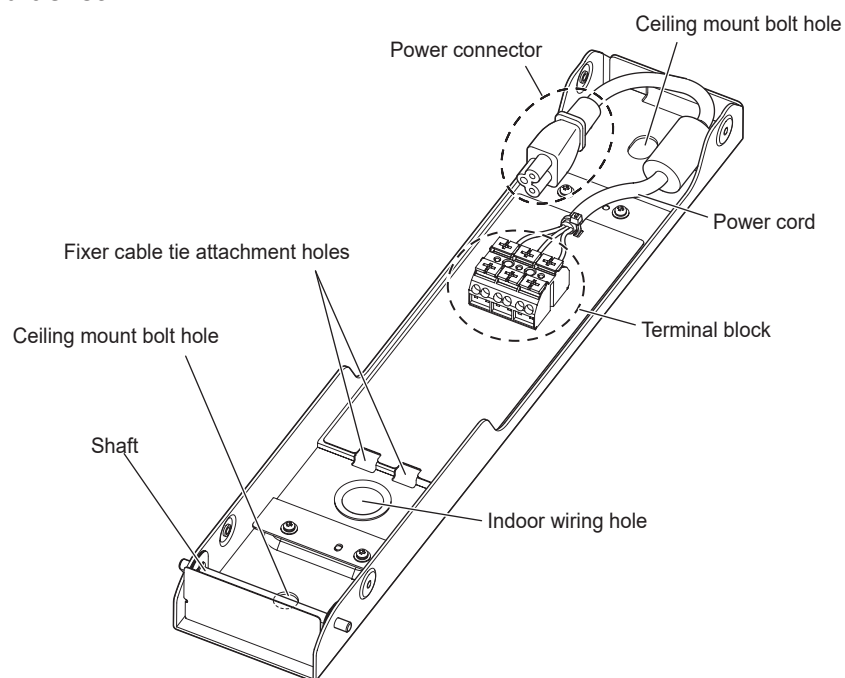
- When moving this product to another place, you will need a fixer cable tie (total length: 80 mm [3-5/32"], UL flame-retardant grade: UL94-V2) equivalent to the supplied one.
- **A work bench and a soft cloth to prevent scratches are required when mounting the projector mount bracket to a projector.**
Prepare a bench for the mounting work with a height of at least 280 mm (11") and lay a soft cloth or the like below the projector to prevent scratches.



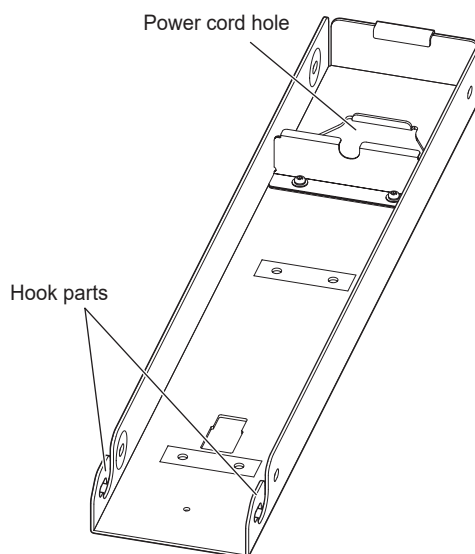
Before installation (continued)

Names of parts

■ Ceiling mount bracket



■ Projector mount bracket

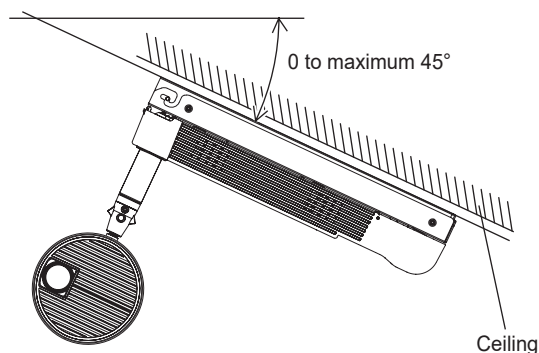


Before installation (continued)

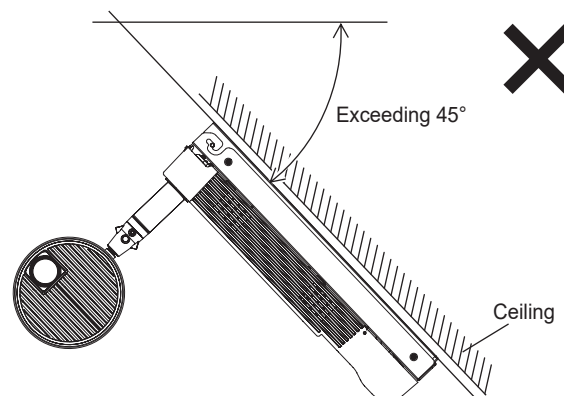
Installation orientation

Mount this product in the specified orientation to a flat ceiling or a ceiling with a slope of up to 45°. Mounting this product to an inappropriate surface such as to a wall or floor or mounting it to a ceiling with a steep slope or in the wrong orientation may cause a fall or drop accident.

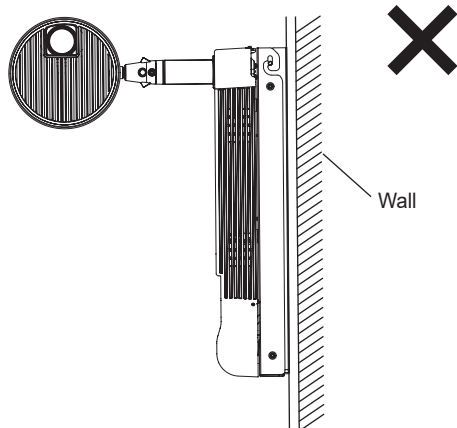
- **Do not install the projector on a sloped ceiling exceeding 45°, wall, or floor.**



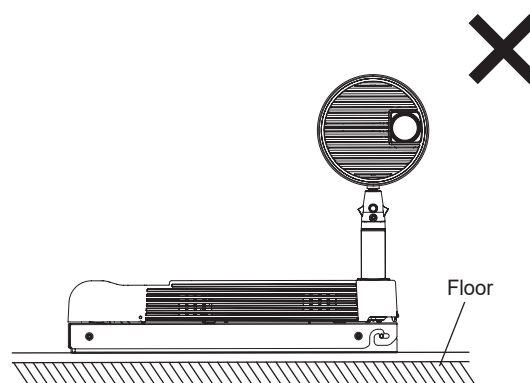
Can be installed



Cannot be installed

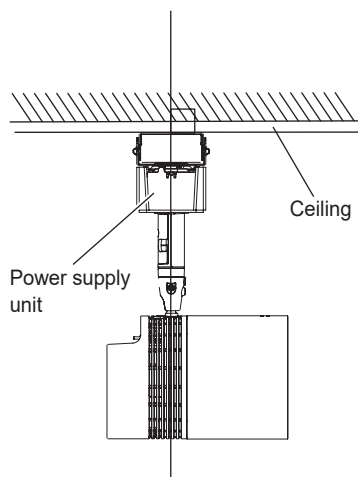


Cannot be installed

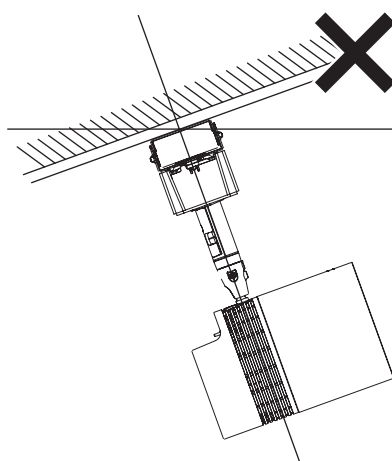


Cannot be installed

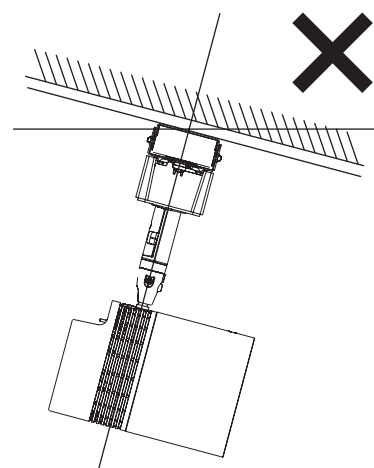
- **Do not install the projector on a ceiling tilted right or left.**



Can be installed



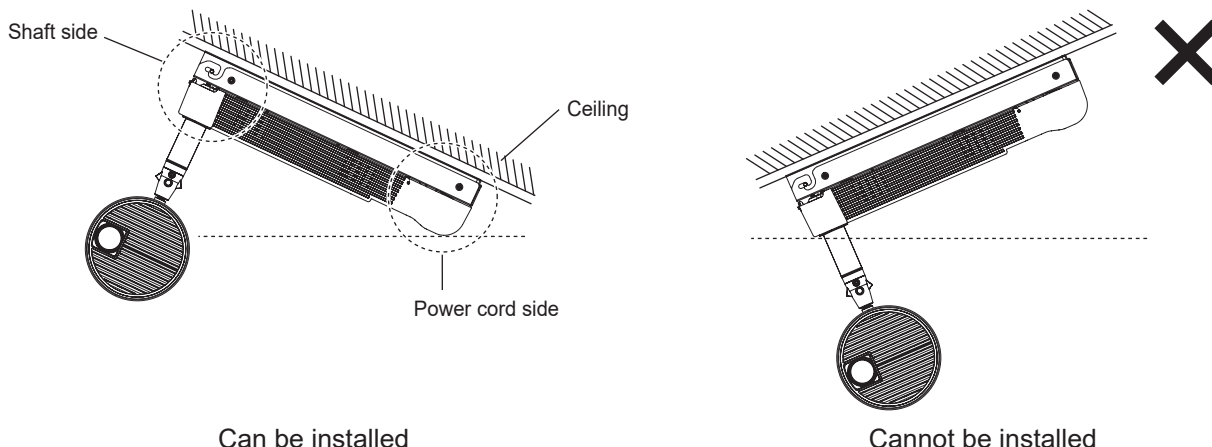
Cannot be installed



Cannot be installed

Before installation (continued)

- When mounting this product to the ceiling, mount it so that the shaft side of the ceiling mount bracket is higher than the power supply cord side.



Note

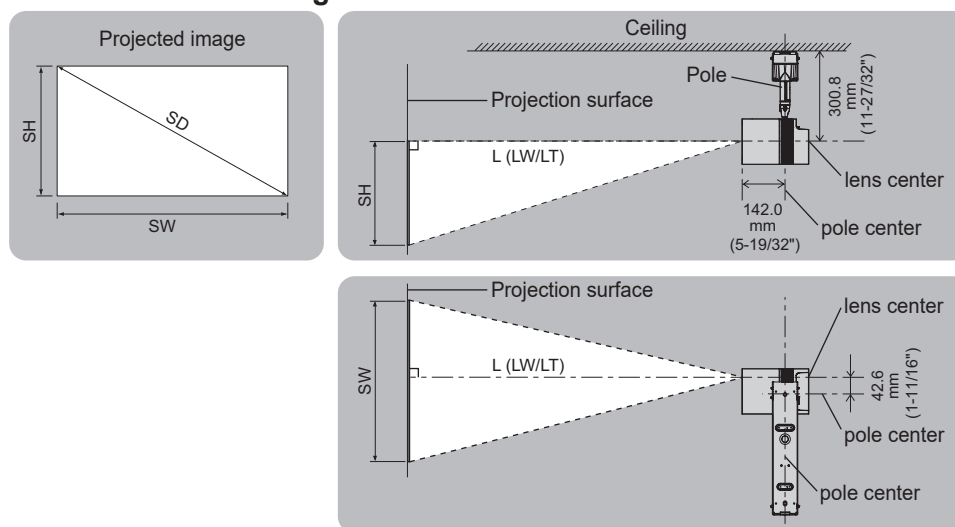
- The product, the projector, the product and projector used in a combined state, and other parts shown in the illustrations in this manual may differ from the actual equipment.

Installation position

Decide the installation position on the ceiling while referring to “Projection related dimension diagrams,” “Projection distances,” and “Mounting hole dimensions.”

The following illustrations are examples of the projection lens surface of the main unit of the projector and the projection surface positioned so that they are facing each other straight. The projection position and projection screen size can be adjusted on the projector side in accordance with the projection surface position and range.

■ Projection related dimension diagrams



L (LW/LT)*1	Projection distance (distance from projection lens surface to the projection surface) (m)
SH	Image height (m)
SW	Image width (m)
SD	Screen diagonal size (m)

*1 LW: Minimum projection distance
LT: Maximum projection distance

Before installation (continued)

■ Projection distance (when aspect ratio 16:10)

The following shows the dimensional relationship between the projector and projection surface.

The dimensions included in the following table have a slight error. Also, when keystone correction is performed on the projector side, correction is made so that the projected image size becomes smaller than the specified screen size.

(Unit: m)

Projected image size			Projection distance (L)	
Diagonal (SD)	Height (SH)	Width (SW)	Min. (LW)	Max. (LT)
0.76 (30")	0.404	0.646	0.95	2.10
1.02 (40")	0.538	0.862	1.28	2.81
1.27 (50")	0.673	1.077	1.61	3.52
1.52 (60")	0.808	1.292	1.94	4.23
1.78 (70")	0.942	1.508	2.27	4.94
2.03 (80")	1.077	1.723	2.60	5.65
2.29 (90")	1.212	1.939	2.93	6.36
2.54 (100")	1.346	2.154	3.26	7.07
3.05 (120")	1.615	2.585	3.92	8.50
3.81 (150")	2.019	3.231	4.91	10.63
5.08 (200")	2.692	4.308	6.55	14.19

■ Projection distance formula (when aspect ratio 16:10)

To use an image size not listed in this manual, check the projected image size SD (m) and use the respective formula to calculate projection distance (L).

The unit of the formula is all "m". (Value obtained by the following calculation formula contains a slight error.)

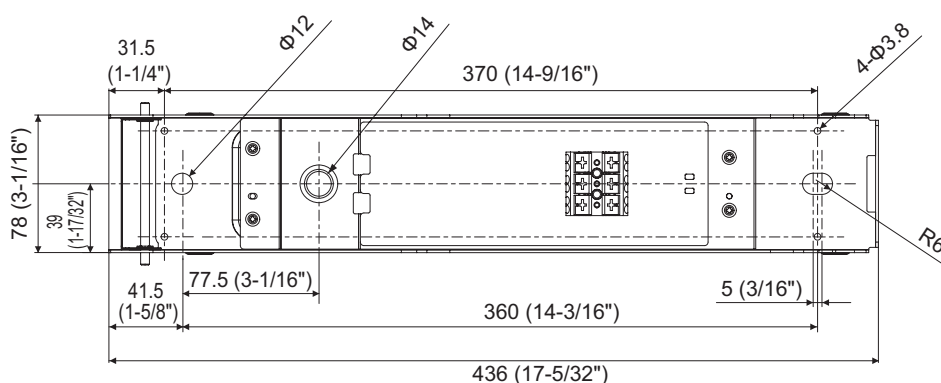
When calculating a projection distance using image size designation (value in inches), multiply the value in inches by 0.0254 and substitute it into SD in the formula for calculating the projection distance.

Minimum projection distance (LW)	$L = 1.2976 \times SD - 0.0385$
Maximum projection distance (LT)	$L = 2.7999 \times SD - 0.0379$

■ Mounting hole dimensions

<Ceiling mount bracket diagram>

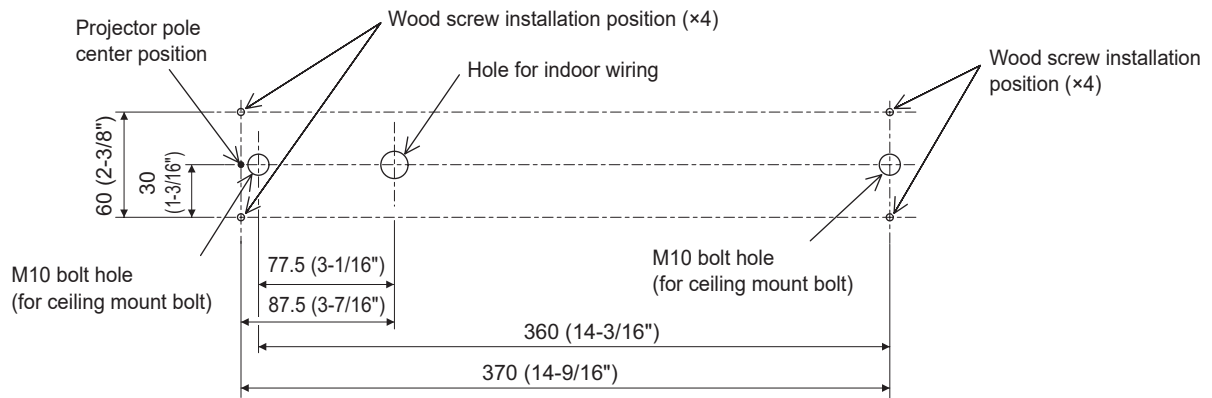
Unit: mm



Before installation (continued)

<Ceiling hole positions dimensions>

Unit: mm



Installation

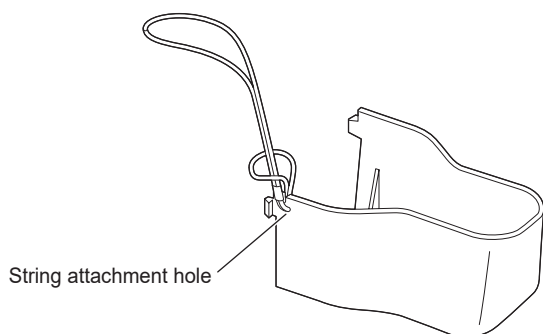
Main procedures

The main procedures for using this product to install a projector (separately sold product) on a ceiling are as follows.

Before performing the work, be sure to shut off the power supply to the room by, for example, turning off the wiring circuit breaker.

- 1) Preparing the adapter cover (→ 13 page)
- 2) Mounting the ceiling mount bracket to the ceiling (→ 13 page)
- 3) Connecting the indoor wiring for the power supply (→ 17 page)
- 4) Changing the orientation of the main unit of the projector (→ 18 page)
- 5) Mounting the projector mount bracket to the projector (→ 19 page)
- 6) Mounting the projector to the ceiling mount bracket (→ 21 page)
- 7) Connecting the power cord to the projector (→ 23 page)
- 8) Adjusting the projection position (→ 25 page)

Preparing the adapter cover



1) Attach the string to the adapter cover.

- Pass the end of the string (end with the small loop) through the hole in the adapter cover and then attach the string to the adapter cover as shown in the following diagram.

Mounting the ceiling mount bracket to the ceiling

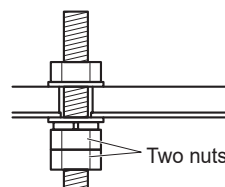
Check the height, space, and structure of the installation location and then determine the installation position on the ceiling in advance while referring to "Installation position" (→ 10 page). Use the center of the projector pole as a guide for positioning.

The mounting method for the ceiling mount bracket differs depending on the structure of the ceiling. Install it in a way that is appropriate for the ceiling to which it is to be mounted.

Check that the installation location of the ceiling mount bolts and ceiling kit is strong enough to withstand the weight of both the projector and ceiling kit.

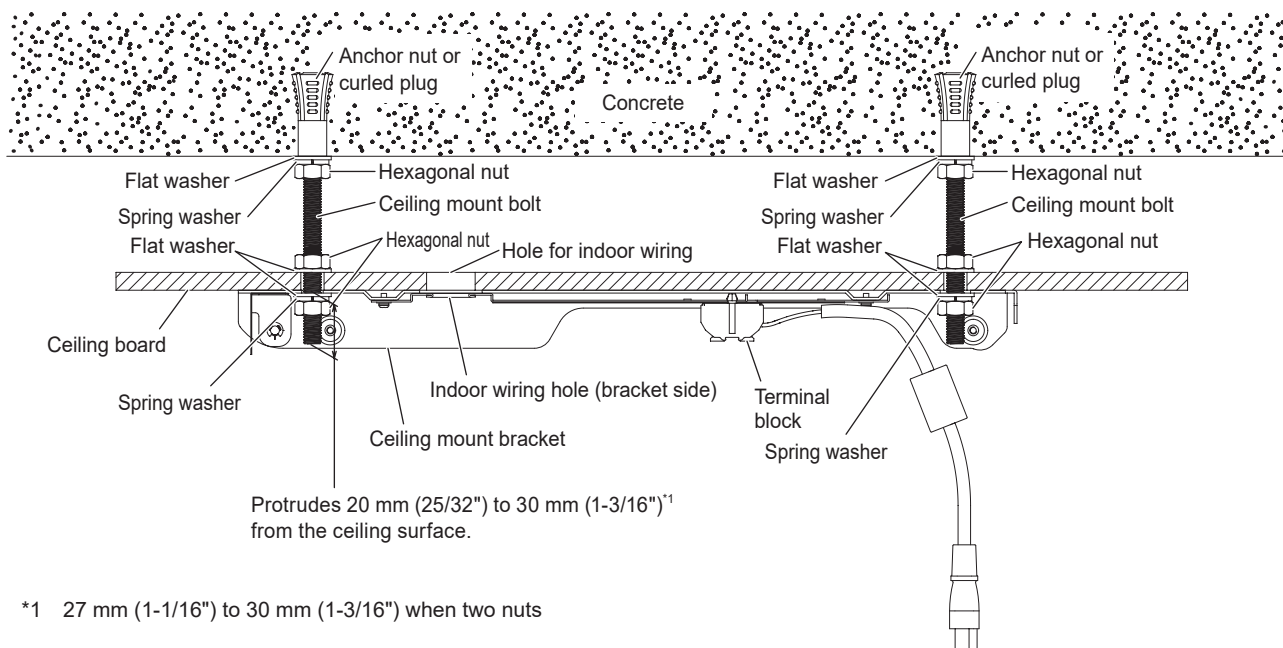
Attention

- When mounting the product to the ceiling with ceiling mount bolts, be sure to use commercially available ceiling mount bolts, hexagonal nuts, flat washers, spring washers, and anchor nuts or curled plugs for the M10 thread size.
- When mounting the product to a concrete ceiling with ceiling mount bolts, drill anchor nut or curled plug mounting holes to match the size specified by the manufacturer.
- Securely tighten each nut, and if necessary take a measure such as using two nuts or thread-locking fluid to prevent loosening.
- When mounting the product to a ceiling with wood screws, ensure there will be thread engagement of at least 16 mm (5/8") in the ceiling reinforcement member and purchase wood screws with a nominal diameter of 3.1 mm (1/8").



Installation (continued)

■ When the ceiling mount bolt installation location is concrete



1) Drill mounting holes in reference to "Mounting hole dimensions" (→ 11 page).

- Drill anchor nut or curled plug mounting holes to match the size specified by the manufacturer.
- Drill two holes in the ceiling board for passing the ceiling mount bolts (M10) through and one hole in the ceiling board for pulling the indoor wiring through.

2) Attach the two ceiling mount bolts to the concrete ceiling.

- Attach the anchor nuts or curled plugs to the concrete ceiling and securely fix the two ceiling mount bolts.
- When installing anchor nuts or curled plugs, strictly adhere to the installation instructions supplied by the manufacturer so that they will not come out or loosen, or be dislodged from the intended positions.
- If the ceiling concrete has become weak and fragile or may have degraded as a result of being old, reinforce it with iron or wood.

3) Pull out the indoor wiring for the power supply from the ceiling.

- Pull out the indoor wiring for the power supply from the indoor wiring hole you drilled in the ceiling board.

4) Attach the ceiling mount bracket to the ceiling mount bolts.

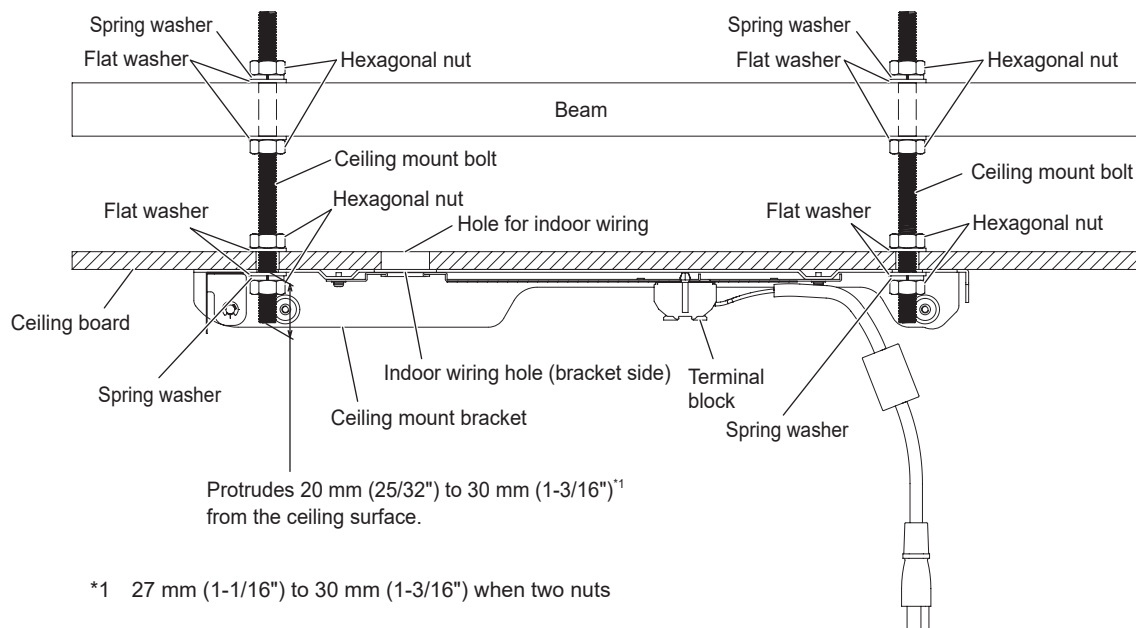
- Pass the indoor wiring for the power supply through the indoor wiring hole of the ceiling mount bracket and then securely fix the ceiling mount bracket to the ceiling mount bolts.
- The ends of ceiling mount bolts at the ceiling mount bracket side should protrude by approx. 5 mm (3/16") from the hexagonal nuts.
- Make sure the distance from the surface of the ceiling mount bracket to the end of the ceiling mount bolts is within 30 mm (1-3/16"). If the distance is too long, the projector mount bracket will not be able to be attached.
- Be sure to use commercially available flat washers and spring washers to install the ceiling mount bracket.

Attention

- Tighten the hexagonal nuts fixing the ceiling board and ceiling mount bracket together while considering the strength of the ceiling board material. If the ceiling board material is of low strength, the ceiling board may be damaged if the nuts are tightened to the specified torque. Also take a measure such as using two nuts or thread-locking fluid to prevent loosening of the hexagonal nuts.

Installation (continued)

■ When the ceiling mount bolt installation location is a wooden beam



1) Drill mounting holes in reference to "Mounting hole dimensions" (→ 11 page).

- Drill two penetration holes in the ceiling beam for the ceiling mount bolts.
- Drill two holes in the ceiling board for passing the ceiling mount bolts (M10) through and one hole in the ceiling board for pulling the indoor wiring through.

2) Attach the two ceiling mount bolts.

- Securely fix the two ceiling mount bolts to the ceiling beam.
- If the place for fixing the ceiling mount bolts is not strong enough, sufficiently reinforce it giving consideration to safety factors.

3) Pull out the indoor wiring for the power supply from the ceiling.

- Pull out the indoor wiring for the power supply from the indoor wiring hole you drilled in the ceiling board.

4) Attach the ceiling mount bracket to the ceiling mount bolts.

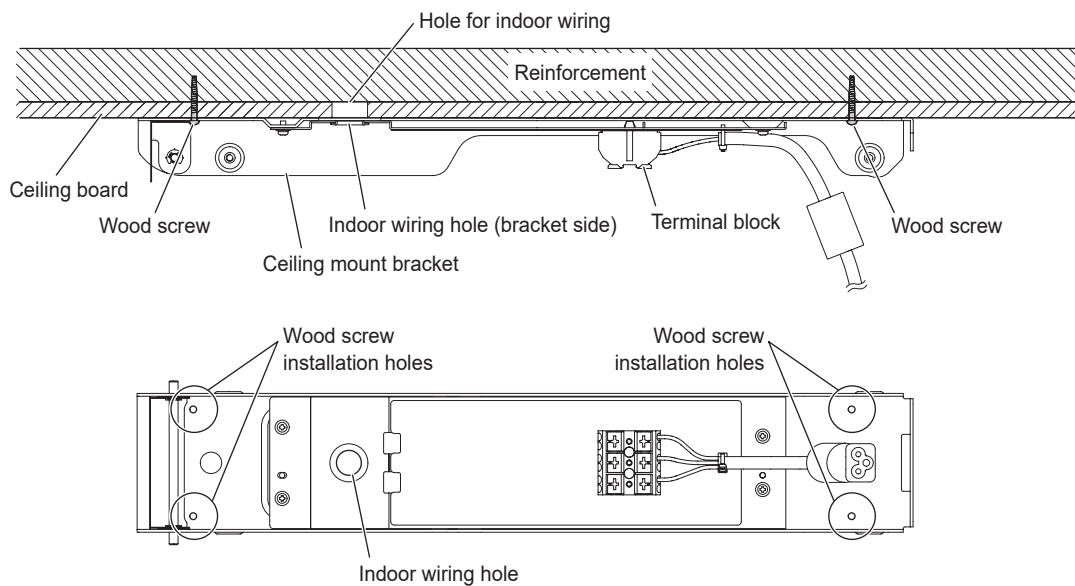
- Pass the indoor wiring for the power supply through the indoor wiring hole of the ceiling mount bracket and then securely fix the ceiling mount bracket to the ceiling mount bolts.
- The ends of ceiling mount bolts at the ceiling mount bracket side should protrude by approx. 5 mm (3/16") from the hexagonal nuts.
- Make sure the distance from the surface of the ceiling mount bracket to the end of the ceiling mount bolts is within 30 mm (1-3/16"). If the distance is too long, the projector mount bracket will not be able to be attached.
- Be sure to use commercially available flat washers and spring washers to install the ceiling mount bracket.

Attention

- Tighten the hexagonal nuts fixing the ceiling board and ceiling mount bracket together while considering the strength of the ceiling board material. If the ceiling board material is of low strength, the ceiling board may be damaged if the nuts are tightened to the specified torque. Also take a measure such as using two nuts or thread-locking fluid to prevent loosening of the hexagonal nuts.

Installation (continued)

■ When mounting to a reinforced ceiling with wood screws



1) Drill mounting holes in reference to “Mounting hole dimensions” (→ 11 page).

- Drill one hole in the ceiling board for pulling through the indoor wiring and then mark the four positions for fixing the bracket in place with the wood screws.

2) Pull out the indoor wiring for the power supply from the ceiling.

- Pull out the indoor wiring for the power supply from the indoor wiring hole you drilled in the ceiling board.

3) Mount the ceiling mount bracket to the ceiling.

- Pass the indoor wiring for the power supply through the indoor wiring hole of the ceiling mount bracket and then align the ceiling mount bracket with the predetermined positions and securely fix it to the ceiling board.
- Use commercially available wood screws with a nominal diameter of 3.1 mm (1/8") to secure the ceiling mount bracket.
- If the ceiling board of the installation location is not strong enough, the product may fall or the ceiling board may bend or be damaged, etc. Sufficiently reinforce it giving consideration to safety factors.
- When reinforcing the ceiling, ensure there will be thread engagement of at least 16 mm (5/8") in the ceiling reinforcement member.

[Reference]

Wood screw pullout strength

Unit (N)

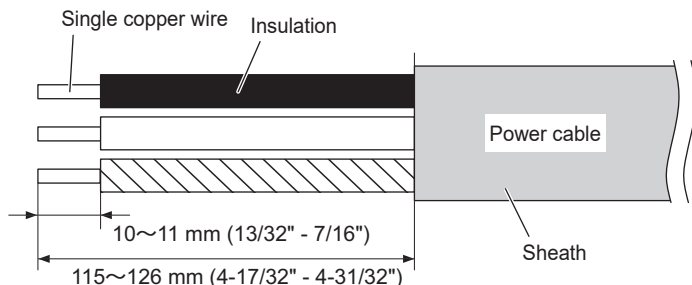
Tree type Thickness of at least 20 mm (25/32")	Wood screw (nominal diameter 3.1 mm [1/8"] x thread engagement 16 mm [5/8"])		
	Cross grain	Straight grain	Edge
Pine	637	539	441
Cedar	490	490	343
Cypress	784	1029	441
Lauan	441		-
Plywood	539		392
Laminated veneer lumber	392		193

Installation (continued)

Connecting the indoor wiring for the power supply

This section describes connecting the indoor wiring for the power supply to the terminal block of the ceiling mount bracket.

Single copper wires with a diameter of 1.6 mm (1/16") to 2.0 mm (5/64") are supported for the wiring.



1) Strip the coating off the wires.

- Pull out the indoor wiring for the power supply (power cable) from the ceiling, strip 115 mm (4-17/32") to 126 mm (4-31/32") of the sheath off the cable, and then strip 10 mm (13/32") to 11 mm (7/16") of the insulation off the two power wires and earth wire.
- Exceeding the specified dimensions may cause electric shock.

2) Connect the power cable to the terminal block of the ceiling mount bracket.

- First, perform proper grounding in accordance with your country regulations using the earth terminal of the terminal block. Insert the earth wire all the way into the earth terminal (⊕) (i). Improper connection may cause a fire.
- Next, insert the two power wires all the way into the live terminal (L1) and neutral terminal (N) of the terminal block (ii). Improper connection may cause a fire.

Attention

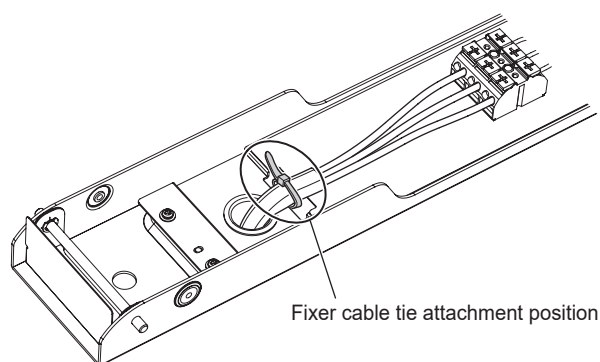
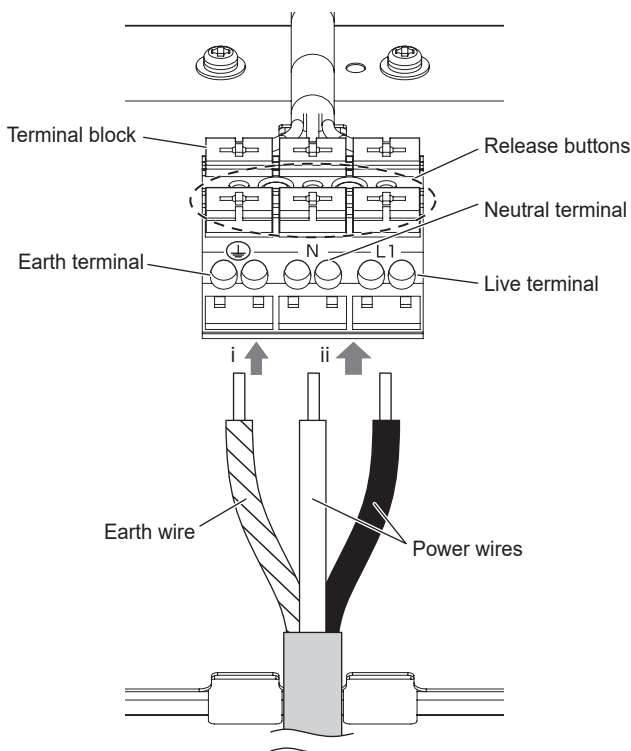
- Do not connect the power cable of another projector or lighting via the terminal block of this product. Doing so may cause a fire.

Note

- To disconnect the connected power cable from the terminal block, pull out each wire while pushing in the corresponding release button on the terminal block with a flat-blade screwdriver (with blade edge width of 6 mm [1/4"] or less and blade tip thickness of 0.8 mm [1/32"] or less). Disconnect the power wires first and then disconnect the earth wire last.

3) Fix the power cable to the ceiling mount bracket.

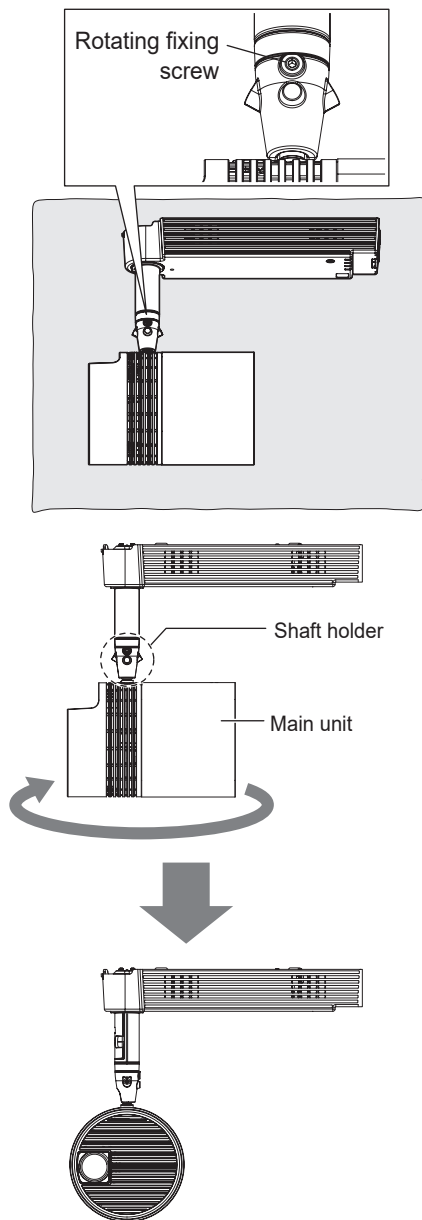
- Push the power cable connected to the terminal block back into the ceiling to remove any slack and then pass the supplied fixer cable tie through the fixer cable tie attachment holes and use it to secure the power cable to the ceiling mount bracket.
- Cut off the excess part of the fixer cable tie so that the fixer cable tie will fit inside when you attach the projector mount bracket to the ceiling mount bracket.



Installation (continued)

Changing the orientation of the main unit of the projector.

This section describes changing the orientation of the main unit of the projector to make the mounting work of the projector mount bracket easier to do.



1) Place the projector on a cloth or the like that has been laid on a flat surface.

2) Loosen the fixing screw.

- Loosen the rotating fixing screw of the projector with the allen wrench (3.0 mm [1/8"] across flats) supplied with the projector.

3) Change the orientation of the main unit.

- Loosening the rotating fixing screw enables rotation of the shaft holder so that the orientation of the main unit can be changed.

4) Tighten the fixing screw.

- Tighten the rotating fixing screw with the allen wrench (3.0 mm [1/8"] across flats) supplied with the projector to prevent the main unit moving during the mounting work.

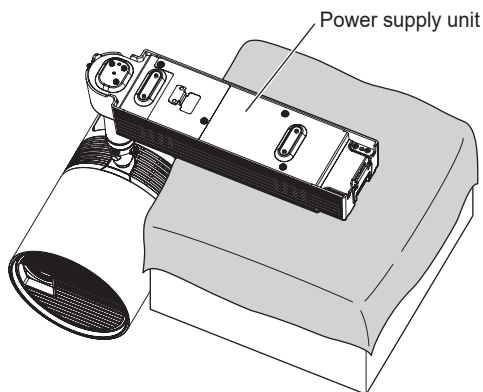
Note

- The rotating fixing screw is a hexagon socket head screw (M6). Take care because it will come out of the projector if loosened too much.

Installation (continued)

Mounting the projector mount bracket to the projector

This section describes mounting the projector mount bracket to the projector.



1) Place the projector on the work bench.

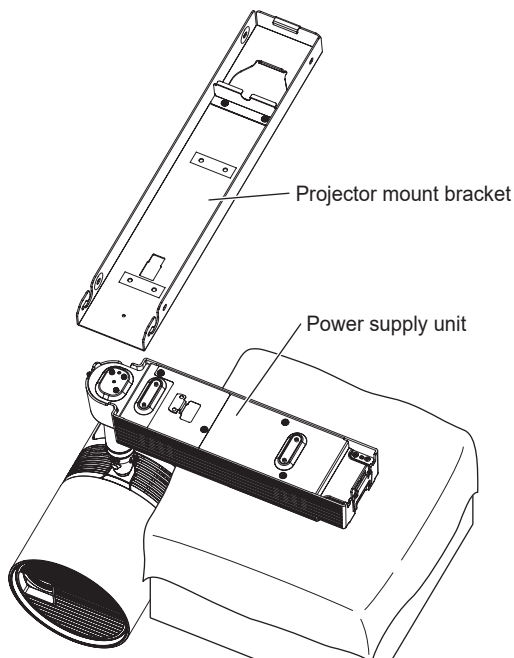
- Place the power supply unit of the projector on a work bench that has a soft cloth or the like laid on it.

Attention

- The projector will not be stable so two people should perform the projector mount bracket mounting work.

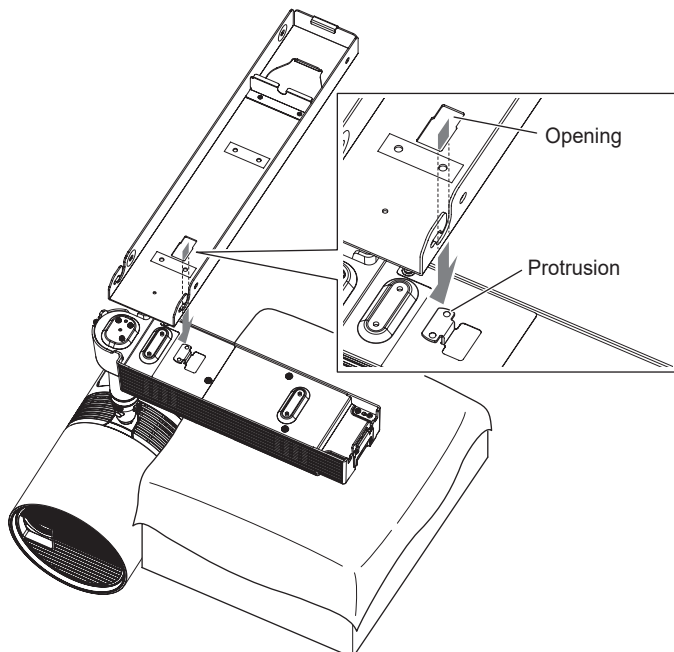
2) Align the projector mount bracket.

- Orient the projector mount bracket at an angle of 90° to the power supply unit of the projector.



3) Mount the projector mount bracket to the projector.

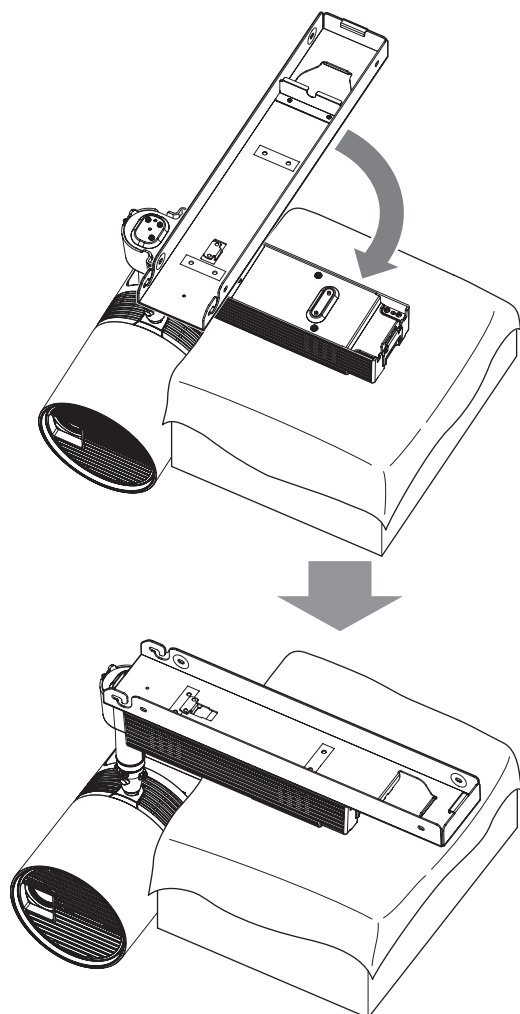
- Align the opening in the projector mount bracket with the position of the protrusion on the projector.



Installation (continued)

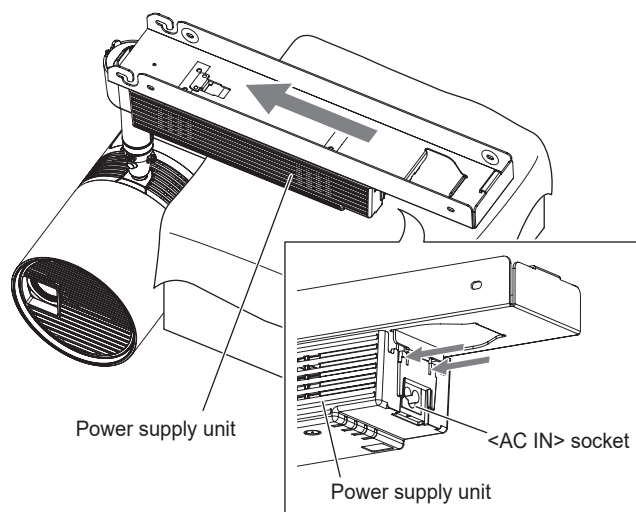
4) Rotate the projector mount bracket.

- Orient the projector mount bracket to match the orientation of the power supply unit of the projector.

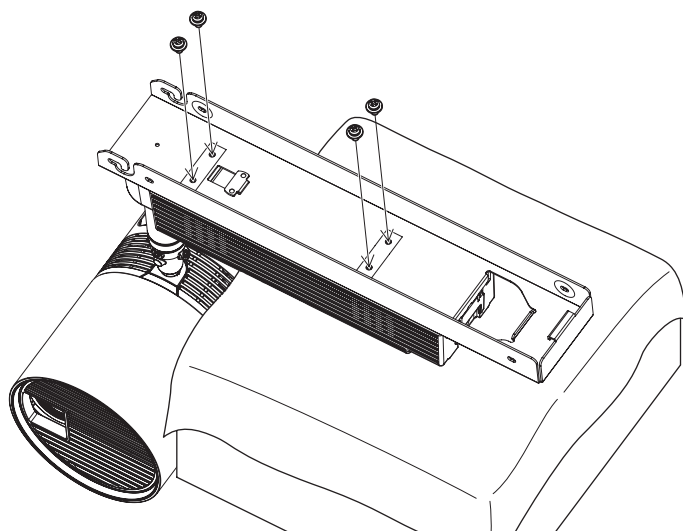


5) Slide the projector mount bracket.

- Slide the projector mount bracket so that it attaches to the <AC IN> socket side of the power supply unit of the projector.



Installation (continued)

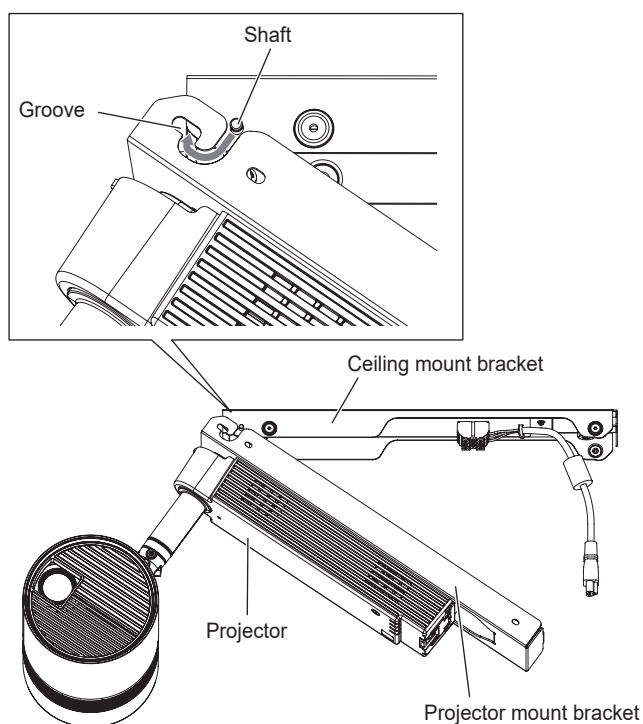


6) Secure the projector mount bracket with the screws, captive washers.

- Firmly secure the projector mount bracket with the four supplied screws, captive washers (M4 x 8).

Mounting the projector to the ceiling mount bracket

Attach the projector that is mounted to the projector mount bracket to the ceiling mount bracket that is mounted to the ceiling.

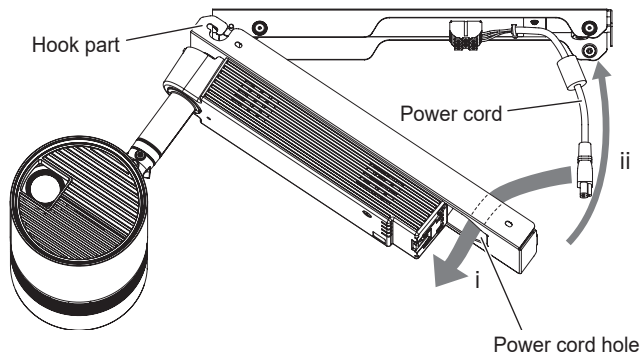


1) Hook the hook parts of the projector mount bracket on the shaft of the ceiling mount bracket.

Attention

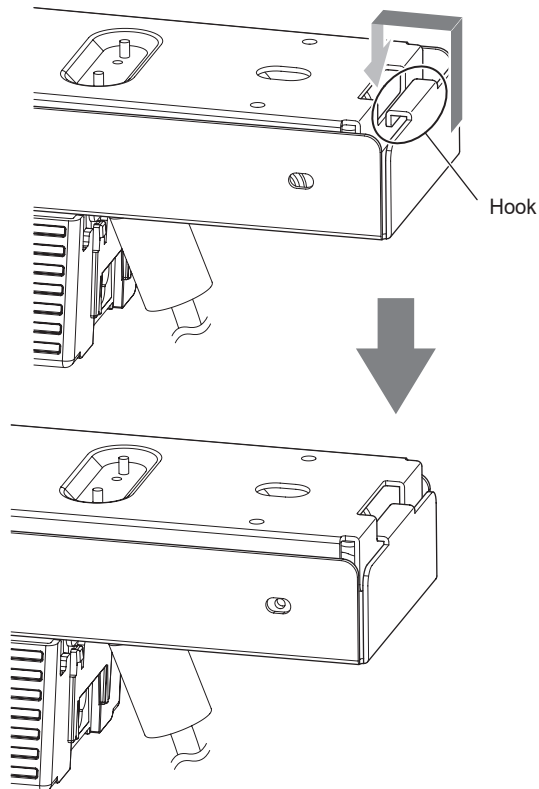
- Do not release your hand until the shaft of the ceiling mount bracket is fitted into the hook parts of the projector mount bracket.

Installation (continued)



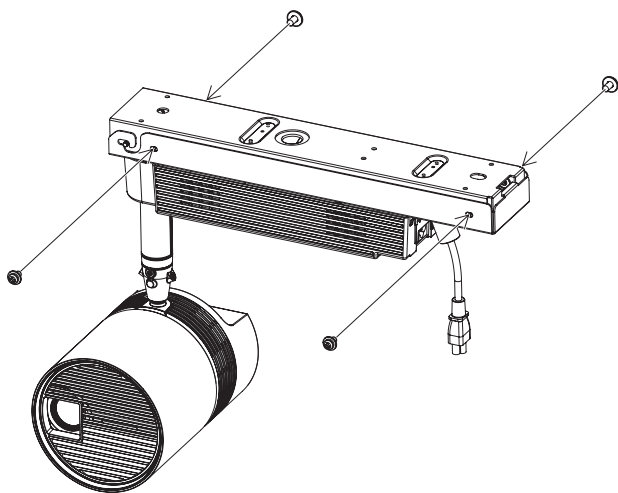
2) Lift up the projector mount bracket.

- While passing the power cord through the power cord hole of the projector mount bracket (i), lift up the projector mount bracket using the hook parts as the pivot point (ii).



3) Attach the projector mount bracket to the ceiling mount bracket.

- Slide the projector mount bracket while lifting it up to hook the hook of the projector mount bracket on the ceiling mount bracket.



4) Secure the projector mount bracket to the ceiling mount bracket with the screws, captive washers.

- Firmly secure the projector mount bracket with the four supplied screws, captive washers (M4 x 8).

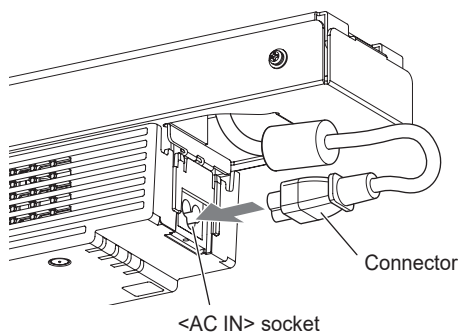
Installation (continued)

Connecting the power cord to the projector

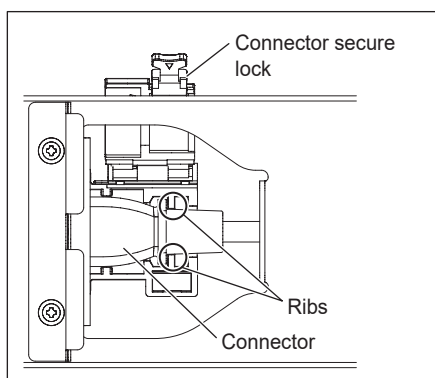
This section describes connecting the power cord installed in the ceiling mount bracket to the projector.

To prevent disconnection of the power cord, firmly insert the connector all the way into the <AC IN> socket of the projector and then secure it in place.

For details on the handling of the power cord, refer to “Read this first!” (→ 2 page).

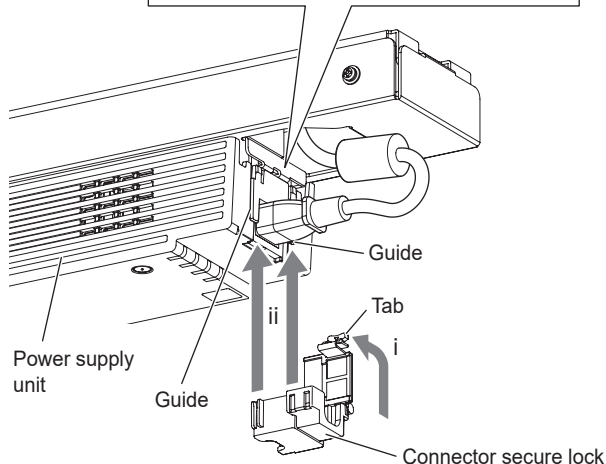


- 1) Check the shapes of the <AC IN> socket of the projector and the connector of the power cord and then orient the connector correctly and insert it firmly.



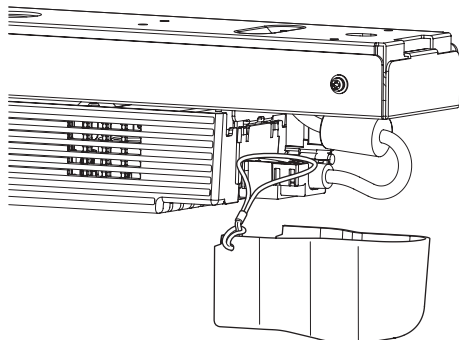
- 2) Attach the connector secure lock.

- While lifting up the tab part of the connector secure lock supplied with the projector as shown in the figure (i), attach the connector secure lock by sliding it along the guides on both sides of the <AC IN> socket of the power supply unit (ii). When attaching it, make sure that the connector of the power cord fits further inside (power supply unit) than the ribs on the connector secure lock.



- 3) Hook the string of the adapter cover on the connector secure lock.

- Hook the string that was attached to the adapter cover beforehand on the connector secure lock as shown in the figure on the left.



Installation (continued)

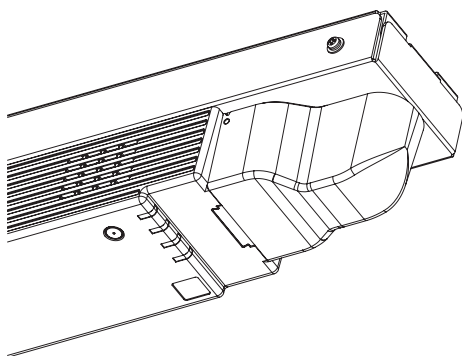
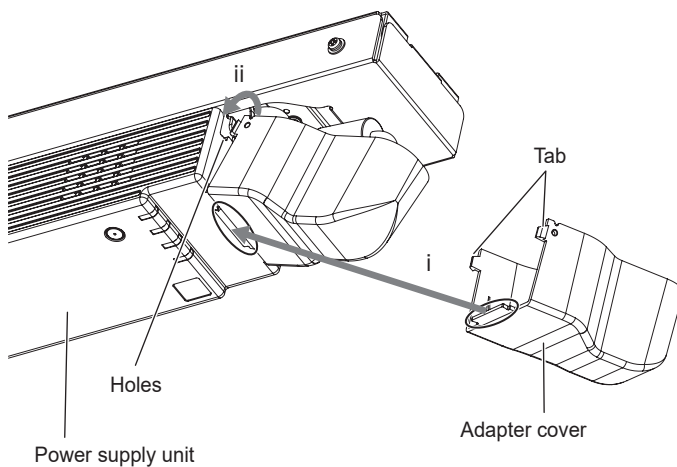
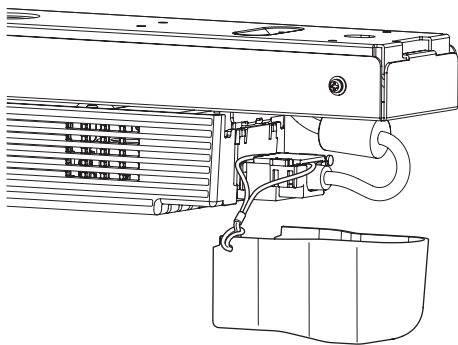
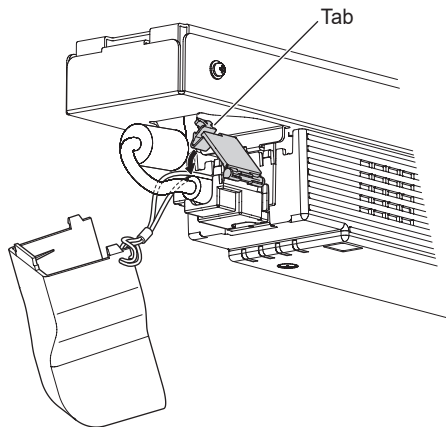


Image of the adapter cover after attachment is complete

4) Close the connector secure lock.

- While the string is hooked onto the cover, push until the tabs of the connector secure lock click into place.
Take care not to trap the string with a tab.
- The string is for preventing the adapter cover from becoming detached and dropping. Make sure that it is hooked onto the connector secure lock.

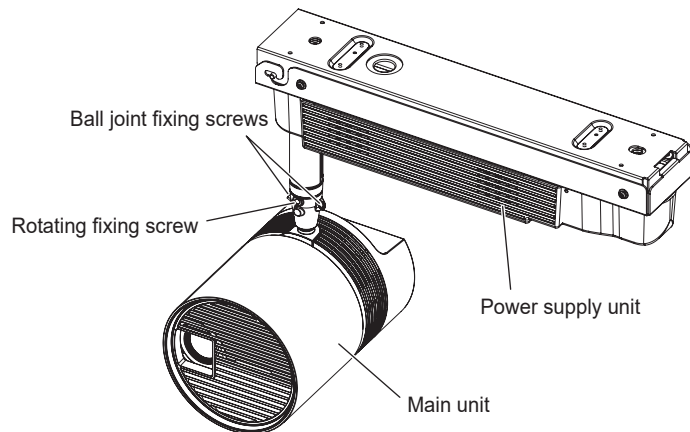
5) Attach the adapter cover.

- While aligning the protrusion at the bottom center of the adapter cover with the groove (i), push the tabs on the left and right at the top of the adapter cover into the holes until they click into place (ii).
Take care not to trap the string in the adapter cover.

Installation (continued)

Adjusting the projection position

This section describes determining the projection position by adjusting the orientation of the main unit of the projector.

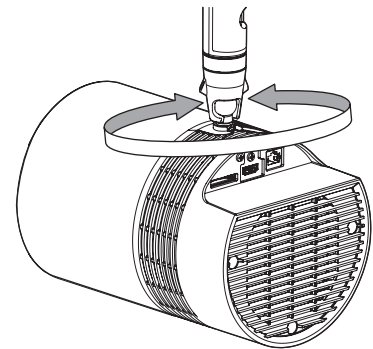
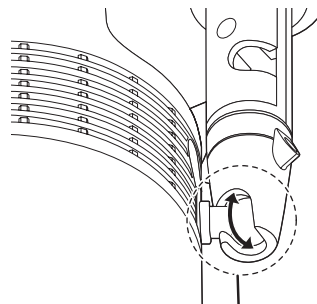
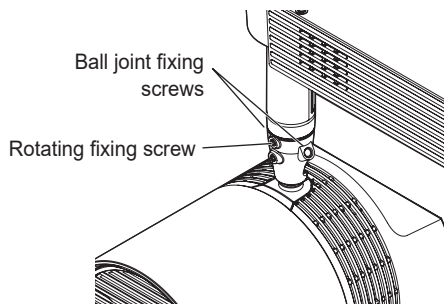


1) Loosen the fixing screw of the projector.

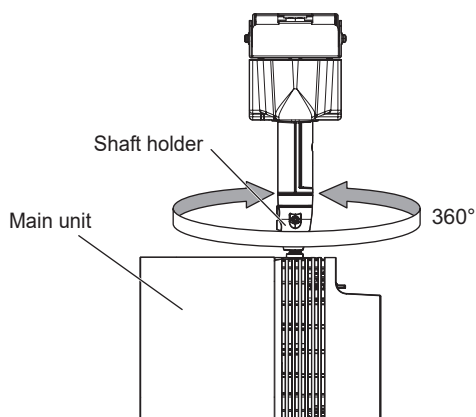
- Loosen the rotating fixing screw and the two ball joint fixing screws of the projector with the allen wrench (3.0 mm [1/8"] across flats) supplied with the projector.

2) Adjust the orientation of the main unit.

- Align the ball joint moving part to the angle at which you want the main unit to be tilted and then adjust the orientation of the main unit.

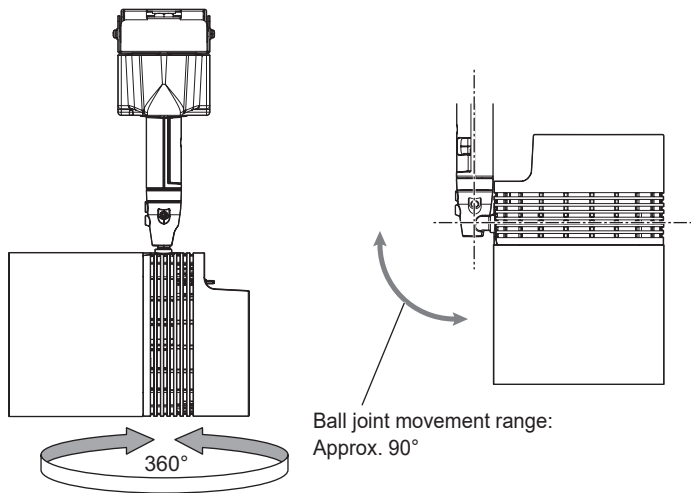


Ball joint movable part



- When you loosen the rotating fixing screw, the shaft holder can rotate 360°. Turn the ball joint moving part to the angle at which you want the main unit to be tilted.

Installation (continued)



- When you loosen the two ball joint fixing screws, the ball joint can move freely. This allows you to rotate the main unit 360° or tilt the main unit 90° with the ball joint moving part.

3) Tighten the fixing screws.

- While supporting the main unit, securely tighten the rotating fixing screw and two ball joint fixing screws with the allen wrench (3.0 mm [1/8"] across flats) supplied with the projector.

Attention

- The main unit and power supply section of the projector are connected by a cable, etc. Do not rotate and change the tilt of the main unit more than necessary.

Attention

- The rotating fixing screw and ball joint fixing screws are hexagon socket head screws (M6). Take care because they will come out of the projector if loosened too much.
- After making rough adjustments, refer to the operating instructions of the projector and then finely adjust the projection position, focus, and projection screen size while actually projecting images. If necessary, also correct any keystone distortion.

Specifications

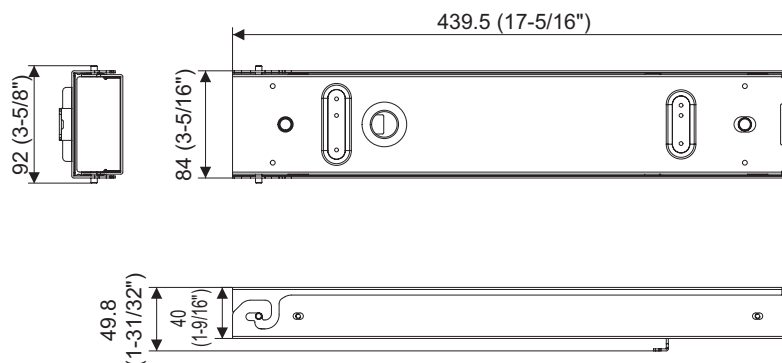
Dimensions^{*1}	Width: 84 mm (3-5/16") Height: 40 mm (1-9/16") Depth: 439.5 mm (17-5/16")
Weight	1.7 kg (3.75 lbs.)
Outer color	ET-JPC100BE: Black (for use in combination with PT-JW130FBE / PT-JW130FBK) ET-JPC100WE: White (for use in combination with PT-JW130FWE / PT-JW130FWK)

*1: The dimensions are when just the product is in an assembled state and exclude the protrusions, power cord, and adapter cover.

External dimension diagram

The dimensions are when the ceiling mount bracket and projector mount bracket are in an assembled state.

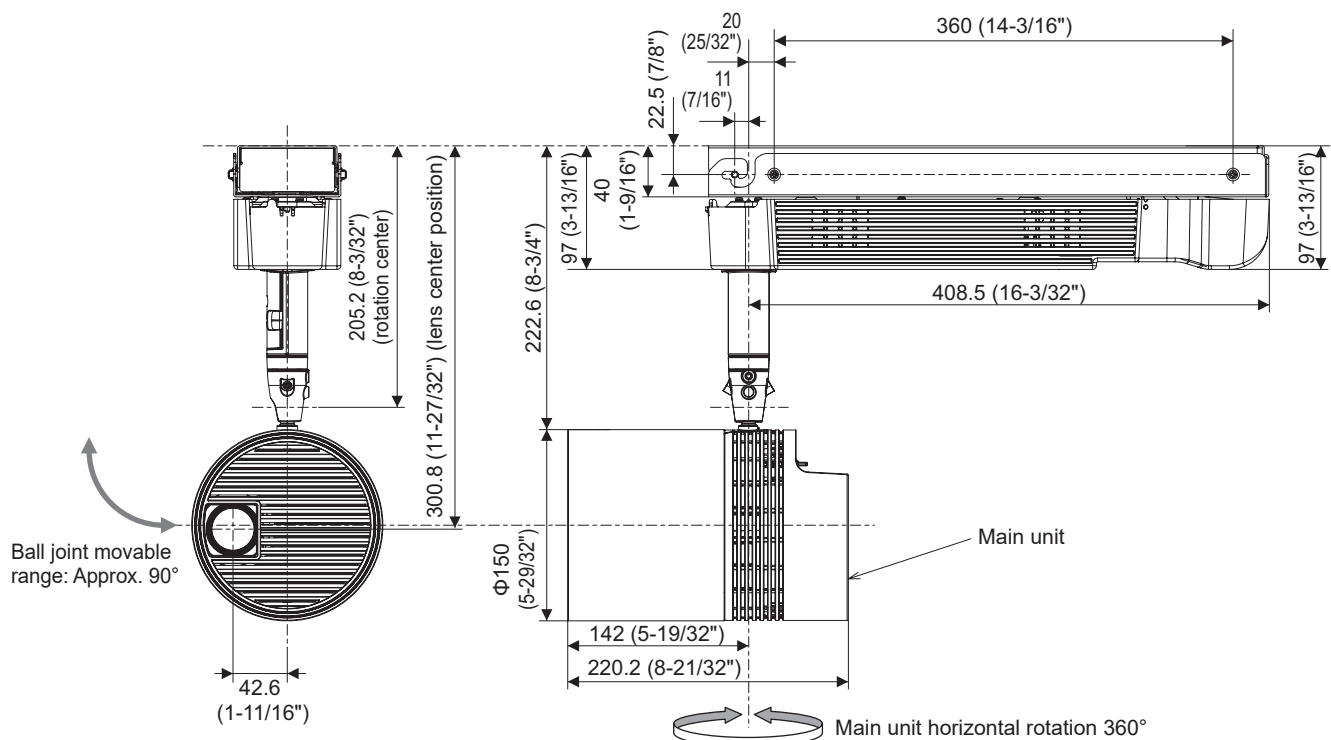
Unit: mm



Assembly dimension diagram

These dimensions are when this product is mounted to a separately sold projector (product number: PT-JW130FBE / PT-JW130FWE / PT-JW130FBK / PT-JW130FWK).

Unit: mm



English
<p>Manufactured by: Panasonic Connect Co., Ltd. 4-1-62 Minoshima, Hakata-ku, Fukuoka 812-8531, Japan</p> <p>Importer: Panasonic Connect Europe GmbH</p> <p>Authorized Representative in EU: Panasonic Testing Centre Winsbergring 15, 22525 Hamburg, Germany</p> <p>Importer for UK; Panasonic Connect UK, a branch of Panasonic Connect Europe GmbH, Maxis 2, Western Road, Bracknell, Berkshire, RG12 1RT</p>



Čeština
<p>Vyrobil: Panasonic Connect Co., Ltd. 4-1-62 Minoshima, Hakata-ku, Fukuoka 812-8531, Japonsko</p> <p>Dovozce: Panasonic Connect Europe GmbH</p> <p>Oprávněný zástupce v EU: Panasonic Testing Centre Winsbergring 15, 22525 Hamburg, Německo</p>

Français
<p>Fabriqué par: Panasonic Connect Co., Ltd. 4-1-62 Minoshima, Hakata-ku, Fukuoka 812-8531, Japon</p> <p>Importateur : Panasonic Connect Europe GmbH</p> <p>Représentant autorisé dans l'UE : Panasonic Testing Centre Winsbergring 15, 22525 Hambourg, Allemagne</p>

Dansk
<p>Fremstillet af: Panasonic Connect Co., Ltd. 4-1-62 Minoshima, Hakata-ku, Fukuoka 812-8531, Japan</p> <p>Importør: Panasonic Connect Europe GmbH</p> <p>Autoriseret repræsentant i EU: Panasonic Testing Centre Winsbergring 15, 22525 Hamburg, Tyskland</p>

Español
<p>Fabricado por: Panasonic Connect Co., Ltd. 4-1-62 Minoshima, Hakata-ku, Fukuoka 812-8531, Japón</p> <p>Importador: Panasonic Connect Europe GmbH</p> <p>Representante Autorizado para la UE: Panasonic Testing Centre Winsbergring 15, 22525 Hamburgo, Alemania</p>

Eesti
<p>Tootja: Panasonic Connect Co., Ltd. 4-1-62 Minoshima, Hakata-ku, Fukuoka 812-8531, Jaapan</p> <p>Maaletooja: Panasonic Connect Europe GmbH</p> <p>Volitatud esindaja ELis: Panasonic Testing Centre Winsbergring 15, 22525 Hamburg, Saksamaa</p>

Deutsch
<p>Hergestellt von: Panasonic Connect Co., Ltd. 4-1-62 Minoshima, Hakata-ku, Fukuoka 812-8531, Japan</p> <p>Importeur: Panasonic Connect Europe GmbH</p> <p>Vertretungsberechtigter in der EU: Panasonic Testing Centre Winsbergring 15, 22525 Hamburg, Deutschland</p>

Ελληνικά
<p>Κατασκευάστηκε από: Panasonic Connect Co., Ltd. 4-1-62 Minoshima, Hakata-ku, Fukuoka 812-8531, Ιαπωνία</p> <p>Εισαγωγέας: Panasonic Connect Europe GmbH</p> <p>Εξουσιοδοτημένος αντιπρόσωπος στην ΕΕ: Panasonic Testing Centre Winsbergring 15, 22525 Hamburg, Γερμανία</p>

Italiano
<p>Fabbricato da: Panasonic Connect Co., Ltd. 4-1-62 Minoshima, Hakata-ku, Fukuoka 812-8531, Giappone</p> <p>Importatore: Panasonic Connect Europe GmbH</p> <p>Rappresentante autorizzato nell'UE: Panasonic Testing Centre Winsbergring 15, 22525 Amburgo, Germania</p>

Hrvatski
<p>Proizvodi: Panasonic Connect Co., Ltd. 4-1-62 Minoshima, Hakata-ku, Fukuoka 812-8531, Japan</p> <p>Uvoznik: Panasonic Connect Europe GmbH</p> <p>Ovlašteni zastupnik u EU-u: Panasonic Testing Centre Winsbergring 15, 22525 Hamburg, Njemačka</p>

Български
<p>Производител: Panasonic Connect Co., Ltd. 4-1-62 Minoshima, Hakata-ku, Fukuoka 812-8531, Япония</p> <p>Вносител: Panasonic Connect Europe GmbH</p> <p>Упълномощен представител в ЕС: Panasonic Testing Centre Winsbergring 15, 22525 Hamburg, Германия</p>

Latviešu
<p>Ražotājs: Panasonic Connect Co., Ltd. 4-1-62 Minoshima, Hakata-ku, Fukuoka 812-8531, Japāna</p> <p>Importētājs: Panasonic Connect Europe GmbH</p> <p>Oficiālais pārstāvis ES: Panasonic Testing Centre Winsbergring 15, 22525 Hamburg, Vācija</p>

Lietuvių

Gamintojas:

Panasonic Connect Co., Ltd.
4-1-62 Minoshima, Hakata-ku, Fukuoka 812-8531, Japonija

Importuotojas:

Panasonic Connect Europe GmbH

Igaliotasis atstovas ES:

Panasonic Testing Centre
Winsbergring 15, 22525 Hamburgas, Vokietija

Română

Fabricat de:

Panasonic Connect Co., Ltd.
4-1-62 Minoshima, Hakata-ku, Fukuoka 812-8531, Japonia

Importator:

Panasonic Connect Europe GmbH

Reprezentant autorizat în UE:

Panasonic Testing Centre
Winsbergring 15, 22525 Hamburg, Germania

Magyar

Gyártotta:

Panasonic Connect Co., Ltd.
4-1-62 Minoshima, Hakata-ku, Fukuoka 812-8531, Japán

Importőr:

Panasonic Connect Europe GmbH

Hivatalos képviselő az EU-ban:

Panasonic Testing Centre
Winsbergring 15, 22525 Hamburg, Németország

Slovenčina

Výrobca:

Panasonic Connect Co., Ltd.
4-1-62 Minoshima, Hakata-ku, Fukuoka 812-8531, Japonsko

Dovozca:

Panasonic Connect Europe GmbH

Autorizovaný zástupca v EÚ:

Panasonic Testing Centre
Winsbergring 15, 22525 Hamburg, Nemecko

Nederlands

Geproduceerd door:

Panasonic Connect Co., Ltd.
4-1-62 Minoshima, Hakata-ku, Fukuoka 812-8531, Japan

Importeur:

Panasonic Connect Europe GmbH

Bevoegde vertegenwoordiger in de EU:

Panasonic Testing Centre
Winsbergring 15, 22525 Hamburg, Duitsland

Slovenščina

Proizvajalca:

Panasonic Connect Co., Ltd.
4-1-62 Minoshima, Hakata-ku, Fukuoka 812-8531, Japonska

Uvoznik:

Panasonic Connect Europe GmbH

Pooblaščení zastopnik v EU:

Panasonic Testing Centre
Winsbergring 15, 22525 Hamburg, Nemčija

Norsk

Produsert av:

Panasonic Connect Co., Ltd.
4-1-62 Minoshima, Hakata-ku, Fukuoka 812-8531, Japan

Importør:

Panasonic Connect Europe GmbH

Autorisert representant i EU:

Panasonic Testing Centre
Winsbergring 15, 22525 Hamburg, Tyskland

Türkçe

Tarafından Üretilmiştir:

Panasonic Connect Co., Ltd.
4-1-62 Minoshima, Hakata-ku, Fukuoka 812-8531, Japonya

İthalatçı:

Panasonic Connect Europe GmbH

AB Yetkili Temsilcisi:

Panasonic Testing Centre
Winsbergring 15, 22525 Hamburg, Almanya

Polski

Wyprodukowano przez:

Panasonic Connect Co., Ltd.
4-1-62 Minoshima, Hakata-ku, Fukuoka 812-8531, Japonia

Importer:

Panasonic Connect Europe GmbH

Upoważniony przedstawiciel w UE:

Panasonic Testing Centre
Winsbergring 15, 22525 Hamburg, Niemcy

Suomi

Valmistaja:

Panasonic Connect Co., Ltd.
4-1-62 Minoshima, Hakata-ku, Fukuoka 812-8531, Japani

Maahantuoja:

Panasonic Connect Europe GmbH

Valtuutettu edustaja EU:ssa:

Panasonic Testing Centre
Winsbergring 15, 22525 Hampuri, Saksa

Português

Fabricado por:

Panasonic Connect Co., Ltd.
4-1-62 Minoshima, Hakata-ku, Fukuoka 812-8531, Japão

Importador:

Panasonic Connect Europe GmbH

Representante Autorizado na UE:

Panasonic Testing Centre
Winsbergring 15, 22525 Hamburgo, Alemanha

Svenska

Tillverkad av:

Panasonic Connect Co., Ltd.
4-1-62 Minoshima, Hakata-ku, Fukuoka 812-8531, Japan

Importör:

Panasonic Connect Europe GmbH

Auktoriserad representant i EU:

Panasonic Testing Centre
Winsbergring 15, 22525 Hamburg, Tyskland

MEMO

MEMO

Disposal of Old Equipment

Only for European Union and countries with recycling systems



This symbol on the products, packaging, and/or accompanying documents means that used electrical and electronic products must not be mixed with general household waste.

For proper treatment, recovery and recycling of old products, please take them to applicable collection points in accordance with your national legislation.

By disposing of them correctly, you will help to save valuable resources and prevent any potential negative effects on human health and the environment.

For more information about collection and recycling, please contact your local authority.

Penalties may be applicable for incorrect disposal of this waste, in accordance with national legislation.

Panasonic Connect Co., Ltd.

Web Site : <https://panasonic.net/cns/projector/>
© Panasonic Connect Co., Ltd. 2022

TI0716AM1042 -PS
Printed in China