





TOUGHBOOK A3

FULLY RUGGED, FAN-LESS ANDROID™ 11 TABLET WITH 10.1” OUTDOOR DISPLAY

The 10.1” Android™-powered TOUGHBOOK A3 delivers true ruggedness and is ideal for highly mobile outdoor workers in challenging conditions. With its capacitive, sunlight viewable 10-finger multi-touch IPS display, flexible configurable ports and business expansion capability, this Android 11 device can be used in the field whilst benefitting from connectivity options to ensure data is always available when needed.

- Qualcomm Snapdragon 660 Octa-Core CPU
- Android™ 11
- Android Enterprise Recommended
- 10” WUXGA (1920x1200) outdoor
- Capacitive 10 finger multi-touchscreen
- 150cm drop resistant*
- Water and dust resistant (IP65)*
- Up to 15 hours battery life
- User field exchangeable battery
- Hot swap battery optional
- Dual battery design (Extended battery available)
- User field exchangeable battery
- USB 3.0 Type-C and USB 2.0 Type A
- Flexible configuration port (BCR/SCR/USB)**
- Lightweight - weighs approx. 880g

*Tested at Panasonic Factory

**Optional

All technical specifications are subject to change without notice.

TOUGHBOOK A3 ACCESSORY ECOSYSTEM



All accessories in this guide are fully tested and certified in the Toughbook factory by Toughbook engineers



Panasonic COMPASS covers everything you need to deploy and manage your Panasonic rugged Android tablets and handhelds securely in your business, over their lifetime. Look out for the logo next to the software and services that fall under the COMPASS umbrella in this catalogue.

Visit business.panasonic.co.uk/computer-product/COMPASS to find out more.



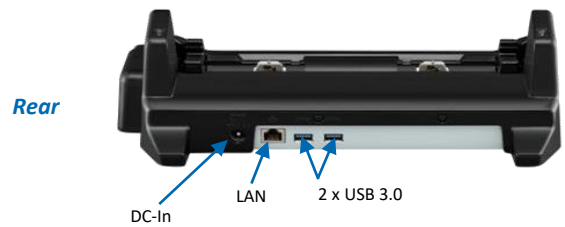
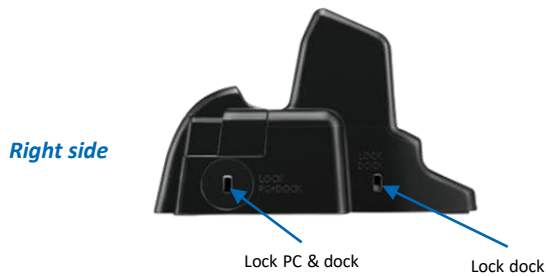
DOCKING SOLUTIONS

TOUGHBOOK A3 Desktop Port Replicator

Size: 315mm x 270mm x 50mm (12.4 x 10.7 x 1.97")

Weight: 1.6 kg (3.53 lb)

Part No: FZ-VEBA21U



All technical specifications are subject to change without notice.

DOCKING SOLUTIONS

TOUGHBOOK A3 Vehicle Dock

Part Numbers:

- PCPE-HAVA301** Without antenna pass-through
- PCPE-HAVA302** With antenna pass-through
- PCPE-HAVA303** Non electronic

Features:

- Ports (except non-electronic version):
 - Power DC-16V
 - 2 x USB 2.0
 - 1 x LAN
 - Dual antenna pass-through optional
- Slam latch mechanism for ease of use
- Lock accessible from both sides
- VESA 75 mounting pattern
- Power supply not included

Dimensions: 291 x 248 x 106 mm (11.4 x 9.772 x 4.0")
Weight: 1.33 kg (2.94 lb)
Warranty: 12 months
Compatibility: TOUGHBOOK A3
Certifications: TOUGHBOOK Certified (Europe)



Part Numbers:

- PCPE-GJA3V01** Without antenna pass-through
- PCPE-GJA3V02** With antenna pass-through
- PCPE-GJA3V03** Non electronic

Features:

- Ports (except non-electronic version):
 - Power DC-16V
 - 2 x USB 2.0
 - 1 x LAN
 - Dual antenna pass-through optional
- Pinch lock mechanism for ease of use
- Lock accessible from both sides
- VESA 75 mounting pattern
- Power supply not included

Dimensions: 291 x 248 x 106 mm (11.4 x 9.772 x 4.0")
Weight: 0.98 kg (2.15 lb)
Warranty: 12 months
Compatibility: TOUGHBOOK A3
Certifications: TOUGHBOOK Certified (Europe) - *Pending*



All technical specifications are subject to change without notice.

CARRYING SOLUTIONS

Panasonic A3 Shoulder Strap

Part No: **CF-VNS331U**



Panasonic A3 Rotating Hand Strap with Stand

Part No: **FZ-VSTA31U**



A3 Mobility Bundle

Comes with removable handle and ergonomic shoulder strap.

Part No: **PCPE-INF20B1**



A3 Enhanced Rotating Hand Strap

Comes with a removable handle and 140cm long shoulder strap.

Part no: **PCPE-INF20H1**



A3 Always On Case

Part No: **TBC**



User Harness

Can be used with the Always On Case and the Enhanced Rotating Hand Strap.

Part No: **PCPE-INFUVA1**



All technical specifications are subject to change without notice.

POWER MANAGEMENT SOLUTIONS

MIL SPEC Auto Adaptor (90W, 11-32 VDC)

Part No: **CF-LNDMLSTD**



Auto Adaptor For Forklifts

Part Nos:

- **PCPE-LNDFH11:** 70-110V
- **PCPE-LNDFH32:** 12-32V
- **PCPE-LNDFH60:** 20-60VDC



Slim Battery Pack

3200 mAh

Part No: **FZ-VZSUT10U**



Extended Battery Pack

5580 mAh

Part No: **FZ-VZSUT11U**



AC Power Supply

Part no: **CF-AA6413Ax***

*E: UK; G: EU; T: Italy; D: Switzerland



5-Bay Battery Charger

Size: 152 x 89 x 60 mm

Weight: 0.44 kg

AC adaptor included (CF-AA5713A*)

Part No: **FZ-VCBT131***

*E: UK; G: EU; T: Italy; D: Switzerland



Auto Adaptor (90W, 12-32 VDC)

Part Nos:

- **CF-LND8024FD:** Cigarette plug input cable
- **CF-LND8024BW:** Bare wire input cable



Auto Adaptor (90W, 12-16 VDC)

Part Nos:

- **CF-LND80S-FD:** cigarette plug input cable
- **CF-LND80SBW:** bare wire input cable



All technical specifications are subject to change without notice.

PRODUCTIVITY SOLUTIONS

Mini Rugged Wireless Keyboard

With Bluetooth

Part Nos:

- **PCPE-ACDSUK1** – UK English
- **PCPE-ACDSFR1** - French
- **PCPE-ACDSGR1** - German



Rugged USB Keyboard

Part No: **PCPE-MMRK01***

*E: English; F: French; G: German



Capacitive Stylus Pen

IP55 rated.

Part No: **CF-VNP025U**



Bungee Tether

Part No: **CF-VNT002U**



Infocase Stylus Tether

Part No: **PCPE-INFUVA2**



Capacitive Touchscreen stylus

Part No: **PCPE-LDYST02**



USB Keyboard

US English only

Part No: **PCPE-KEYB**



Mini Antibacterial USB Keyboard

Part Nos:

- **PCPE-ACCABK1** – UK English;
- **PCPE-ACCABK2** – US English
- **PCPE-ACCABK3** – French
- **PCPE-ACCABK4** - German



All technical specifications are subject to change without notice.

CLEANING & PROTECTION

Kensington Lock

Part No: PCPE-KENLOK1



LCD Screen Cleaning Cloth

Part No: CF-VNC002U

*MOQ: 10 pcs



Protective LCD Film

Replacement for protective film pre-installed on TOUGHBOOK A3

Part No: FZ-VPFA31U



All technical specifications are subject to change without notice.

PRODUCTIVITY SOLUTIONS

Index Trigger Glove - 3 Pcs. Pack

Part Nos:

- **PCPE-PGLITSL** – Left Hand Size Small
- **PCPE-PGLITML** – Left Hand Size Medium
- **PCPE-PGLITLL** – Left Hand Size Large
- **PCPE-PGLITSR** - Right Hand Size Small
- **PCPE-PGLITMR** - Right Hand Size Medium
- **PCPE-PGLITLR** –Right Hand Size Large



Standard Range Barcode Scanner

Part No:

- **PCPE-PGLSCN1**



Bluetooth Headset

Part No:

- **PCPE-MOdBTH1**



Barcode Scanner Charging Cradle

Part Nos:

- **PCPE-PGLCHR2- EU**



Bluetooth Headset 10 Bay Charger

Part No:

- **PCPE-MOD10BC**



Replaceable Batteries – 25 pack

Part No: **PCPE-MOdBAT1**



All technical specifications are subject to change without notice.

PROFESSIONAL SERVICES



Android Installation

Part No: **PCPE-PSANDRD**

Price on Request

Custom ROM Creation

Price and SKU on Request.

SIM Installation

Part No: **PCPE-PSSIMIN**

Asset Tagging

Standard, using CPE label set.

Part No: **PCPE-PSATAG1**

Information Management Bundle

IMEI, MAC, SIM, ASSET, Hardware Hash reporting.

Part No: **PCPE-PSATAGB**

Solution Packaging

Up to 10 items packaged together in a box.

Does not include custom designed case.

Part No: **PCPE-PSSPACK**

Customer Branding

Logo badge on device casing or bezel.

Part Nos: **PCPE-PSLOGOB**

Customised Deployment / Logistics

Part No: **PCPE-PSCDL01**

Price on Request.

Bespoke Training Material

Part No: **PCPE-PSBTM01**

Price on Request

All technical specifications are subject to change without notice.

LIFECYCLE SUPPORT



Extended Warranty (4 or 5 years)

Panasonic’s Extended Warranty provides an additional two years of warranty, helping you to minimise repair costs and maximise the life cycle of your TOUGHBOOK or Toughpad.

Part No.: FZ-LESPEW* *4 / 5

Accidental Damage (3, 4 or 5 years)

Panasonic’s Accidental Damage Warranty provides protection against any eventuality out in the field for up to 5 years, providing you and your workforce with complete peace of mind.

Part No.: FZ-LESPAD* *3 / 4 / 5 (4 & 5 year options include Extended Warranty)

COMPASS Complete (3, 4 or 5 years)

Panasonic’s Accidental Damage Warranty provides protection against any eventuality out in the field for up to 5 years, providing you and your workforce with complete peace of mind.

Part No.: TBC *3 / 4 / 5

Docking Station Warranties (3, 4, or 5 years)

Extended Warranty:

| | | |
|-------------------|-------------------|--|
| CF-LESPPD* | *3 / 4 / 5 | Panasonic Dock – 3, 4 or 5 years Extended Warranty |
| CF-LESPND* | *3 / 4 / 5 | 3rd Party Dock – 3, 4 or 5 years Extended Warranty |

Accidental Damage:

| | | |
|---------------------|-------------------|---|
| CDS-LESPAD* | *3 / 4 / 5 | Panasonic Dock – 3, 4 or 5 years Accidental Damage Warranty |
| CDS-LESPTAD* | *3 / 4 / 5 | 3rd Party Dock – 3, 4 or 5 years Accidental Damage Warranty |

Smart Battery Warranty

Smart Battery Monitor software, powered by B2M Solutions, monitors device battery health in real-time. Smart Battery Monitor will alert you when batteries deployed in the field reach low capacity during normal use, so a replacement battery can be sent out in advance. Available at point of sale of device only.

Part No.: **CF-LESPBASS3** 3 year Smart Battery Warranty (longer periods available on request)

All technical specifications are subject to change without notice.

SMART ESSENTIALS

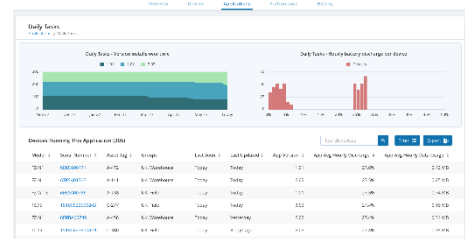


TOUGHBOOK Smart Service

Real time analytics, powered by B2M Solutions, showing the health and performance of your estate of mobile devices, focussing on areas such as battery life, data usage, disruptions and connectivity. Enables the user to recognise patterns of usage and potentially pre-empt issues before they arise.

Part Nos.:

- **CF-LESPSSM3** 3 year Smart Service self-managed licence
- **CF-LESPSSM5** 5 year Smart Service self-managed licence

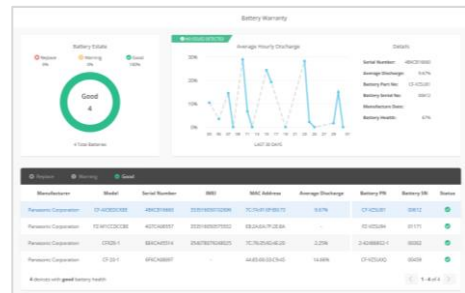


Smart Battery Monitor

An additional “Smart” module that monitors battery usage and health in detail, focusing on battery serial numbers, the software allows the customer to track, identify and replace batteries before they impact productivity. With dashboard access and alerts.

Part Nos:

- **CF-LESPBAEE1** 1 year Smart Battery Monitor software licence
- **CF-LESPBAEE3** 3 year Smart Battery Monitor software licence
- **CF-LESPBAEE5** 5 year Smart Battery Monitor software licence

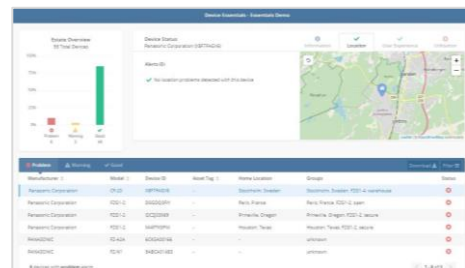


Smart Device Monitor

An additional “Smart” module that monitors device usage in more detail. Dashboard access provides information such as device location; user experience, including drop detection on Android devices and also enables alerts and geofences to be set up.

Part Nos:

- **CF-LESPDAEE1** 1 year Smart Device Monitor software licence
- **CF-LESPDAEE3** 3 year Smart Device Monitor software licence
- **CF-LESPDAEE5** 5 year Smart Device Monitor software licence



All technical specifications are subject to change without notice.

SOFTWARE SOLUTIONS – PREMIER PARTNERS



Absolute Data and Device Security

Patented technology to centrally secure TOUGHBOOK devices for unrivalled endpoint security and data risk management.

Part Nos:

- | | | |
|----------------------|---------------------|------------|
| • PCPE-ABSVIS6 | Absolute Visibility | 5 yrs. |
| • PCPE-ABSDPR* 1/3/6 | Absolute Control | 1/3/5 yrs. |
| • PCPE-ABSDPM* 3/6 | Absolute Resilience | 3/5 yrs. |

Website: <https://www.absolute.com/partners/oem/panasonic/>



NetMotion Mobility

More than just a VPN, “Mobility” Mobile Performance Management software can dynamically maintain access to applications through changing network conditions, allowing mobile workers to remain productive anywhere their work takes them. Diagnostics option also available.

Part Nos:

- | | |
|----------------|-------------------------------|
| • PCPE-NMCORSB | NetMotion Core (12 month) |
| • PCPE-NMCOMSB | NetMotion Complete (12 month) |

Website: <https://www.netmotionsoftware.com/products/mobility>



SOTI MobiControl

MobiControl is an Enterprise Mobility Management (EMM) solution with enhanced EMM features like application management, content management, location services and remote help.

Part Nos:

- PCPE-SOTCL** 1/2/3/5 U/E Cloud license & hosting (1, 2, 3 or 5 yrs. / UK or EU)

Website: <https://www.soti.net/products/soti-mobicontrol/>



Sygic

Sygic Professional GPS Navigation works offline and features truck specific routing, itinerary with time windows and over 60 APIs for development with Android and Windows based apps.

Part numbers available upon request.

Website: <https://www.sygic.com/enterprise/professional-gps-navigation-sdk>

For more info on these software solutions, please refer to the co-branded data sheet [here](#).

SOFTWARE SOLUTIONS – CERTIFIED PARTNERS



StayLinked

StayLinked's SmartTE software provides a cost-effective way to take advantage of touchscreen devices with Terminal Emulation by transforming traditional "green screen" application screens into easy-to-use, graphical screens with no changes to the underlying enterprise applications.

For more information or to request a demo, visit:

<https://www.staylinked.com/panasonic>



Loqus

Loqus Fleet Ltd specialises in the provision of end-to-end Transport management systems providing organisations with the necessary tools to help them Plan, Execute and Monitor & Control work orders from initial order taking down to the last mile. Headquartered in Malta, the group employs a passionate team of high calibre software engineers supported by an experienced management team

Visit website: <http://openfleet.loqusgroup.com/>



Acronis

Acronis sets the standard for cyber protection and hybrid cloud storage through its innovative backup, anti-ransomware, disaster recovery, storage, and enterprise file sync and share solutions. Enhanced by its award-winning AI-based active protection technology, blockchain-based authentication and unique hybrid-cloud architecture, Acronis protects all data in any environment – including physical, virtual, cloud, mobile workloads and applications – all at a low and predictable cost.

Visit website: <https://www.acronis.com>



GPC Systems

GPC is an award-winning software house with over 25 years of experience working with a range of sectors across the globe. Driven by the needs of their customers in healthcare, transportation, police, logistics and local government, GPC strives to improve outcomes through the most efficient use of resources. GPC has in-depth experience creating solutions utilising 3D cameras, including the Intel® RealSense™ technology integrated into the TOUGHBOOK M1.

Visit website: <https://www.gpcsl.com/>

All technical specifications are subject to change without notice.

ACCESSORY SUMMARY 1

| Solution Type | Part Number | Description |
|---------------------------|---|--|
| Docking Solutions | FZ-VEBA21U | TOUGHBOOK A3 Desktop Port Replicator |
| | PCPE-GJA3V01/02/03 | Gamber Johnson TOUGHBOOK A3 Tablet Vehicle Dock |
| | PCPE-HAVA301/02/03 | Havis TOUGHBOOK A3 Tablet Vehicle Dock |
| Productivity | PCPE-MODBTH1 | Bluetooth Headset |
| | PCPE-MOD10BC | Bluetooth Headset 10 Bay Charger |
| Carrying Solutions | CF-VNS331U | TOUGHBOOK A3 Shoulder Strap |
| | FZ-VSTA31U | TOUGHBOOK A3 Rotating Hand Strap with Stand |
| | PCPE-INF20B1 | Toughmate A3 Mobility Bundle |
| | PCPE:INF20H1 | Toughmate A3 Enhanced Rotating Hand Strap |
| | TBA | Toughmate A3 Always On Case |
| | PCPE-INFUVA1 | User Harness |
| Power Management | FZ-VZSUT10U | Slim Battery Pack |
| | FZ-VZSUT11U | Extended Battery Pack |
| | CF-AA6413A* | AC Power Supply |
| | FZ-VCBT131* | 5-Bay Battery Charger |
| | CF-LND80S-FD/BW | Car Charger (12-16VDC) |
| | CF-LND8024 FD/BW | Car Charger (12-32VDC) |
| | CF-LNDMLSTD | Mil Spec Auto Adaptor |
| | PCPE-LNDFH11 | Car Charger for Forklifts (70-110V) |
| | PCPE-LNDFH32 | Car Charger for Forklifts (12-32V) |
| | PCPE-LNDFH60 | Car Charger for Forklifts (20-60VDC) |
| PCPE-MODBAT1 | Replaceable Batteries for Headset – 25 pack | |
| Styluses & Tethers | CF-VNP025U | Panasonic Capacitive Stylus Pen |
| | CF-VNT002U | Bungee Tether |
| | PCPE-LDYST02 | Capacitive Touchscreen Stylus |
| | PCPE-INFUVA2 | Stylus Tether |
| Keyboards and peripherals | PCPE-ACDS* | Mini Rugged Wireless Keyboard |
| | PCPE-MMRK01* | Rugged USB Keyboard |
| | PCPE-KEYB | USB Keyboard |
| | PCPE-ACCABK* | Mini Antibacterial USB Keyboard |
| Barcode Scanner Solutions | PCPE-PGLSCN1 | Standard Range Barcode Scanner |
| | PCPE-PCGCHR2 | Barcode Scanner Charging Cradle EU |
| | PCPE-PGLIT* SL/ML/LL | Index Trigger Glove – 3 Pcs. Pack (SL: Left Hand Small Size, ML: Left Hand Medium Size, LL: Left Hand Large Size) |
| | PCPE-PGLIT* SR/MR/LR | Index Trigger Glove – 3 Pcs. Pack (SR: Right Hand Small Size, MR: Right Hand Medium Size, LR: Right Hand Large Size) |

All technical specifications are subject to change without notice.

ACCESSORY SUMMARY 2

| Solution Type | Part Number | Description |
|-----------------------------|---|---|
| Security & Protection | CF-VN002U | LCD Screen Cleaning Cloth |
| | CF-VPF31U | LCD Protective Film for TOUGHBOOK A3 |
| | PCPE-KENLOK1 | Kensington Lock |
| Mobile Printing Solutions | PCPE-BRPJ763 | PJ763 A4 mobile printer, 300 dpi with USB & Bluetooth |
| | PCPE-BRPJ773 | PJ773 A4 mobile printer, 300 dpi with WiFi, USB & Bluetooth |
| Professional Services | PCPE-PSANDRD | Android Installation |
| | On Request | Custom ROM Creation |
| | PCPE-PSSIMIN | SIM Installation |
| | PCPE-PSATAG1 | Asset Tagging |
| | PCPE-PSATAGB | Information Management Bundle |
| | PCPE-PSLOGOB | Customer Branding |
| | PCPE-PSATAG1 | Solution Packaging |
| | PCPE-PSCDL01 | Customised Deployment / Logistics |
| Lifecycle support solutions | PCPE-PSBTM01 | Bespoke Training Material |
| | FZ-LESPEW 4/5 | Extended Warranty (4 or 5 Years) |
| | FZ-LESPAD 3/4/5 | Accidental Damage (3, 4 or 5 years) |
| | CF-LESPPD 3/5 | Extended Warranty for Panasonic Dock (3 or 5 years) |
| | CF-LESPND 3/5 | Extended Warranty for Third Party Dock (3 or 5 years) |
| | CDS-LESPAD 3/4/5 | Accidental Damage Warranty for Panasonic Dock (3, 4 or 5 years) |
| | CDS-LESPTAD 3/4/5 | Accidental Damage Warranty for 3rd Party Dock (3, 4 or 5 years) |
| Smart Solutions | CF-LESPBASS3 | Smart Battery Warranty – 3 years only |
| | CF-LESPSSSM3/5 | Smart Service licence – 3 or 5 years |
| | CF-LESPBAEE1/3/5 | Smart Battery Monitor software licence |
| Software Solutions | CF-LESPDAEE1/3/5 | Smart Device Monitor software licence |
| | PCPE-ABSDPM* 1/2/3/4/6 | Absolute Resilience |
| | PCPE-ABSDPR* 1/2/3/4/6 | Absolute Control |
| | PCPE-ABSVIS* 1/2/3/4/6 | Absolute Visibility |
| | PCPE-NMW 1/3/5*** | NetMotion Mobility & Diagnostics software and support |
| | PCPE-NLW 1/3/5*** | |
| | PCPE-SOTMC 1/2/3/5 U/E | Subscription & Maintenance (1, 2, 3 or 5 yrs; U: UK/E: EU) |
| PCPE-SOTCL 1/2/3/5 U/E | Cloud License & hosting (1, 2, 3 or 5 yrs; U: UK/E: EU) | |

All technical specifications are subject to change without notice.