





TOUGHBOOK 33 2-IN-1 DETACHABLE WINDOWS 11 PRO 12" FULLY RUGGED NOTEBOOK

TOUGHBOOK 33 2-in-1 Detachable, 12.0" fully rugged notebook with hot swappable twin batteries, detachable keyboard with optional backlit keys, and highly configurable capabilities brings unrivalled flexibility and performance for mobile business computing. Thanks to the detachable keyboard design and 6 usage modes, the TOUGHBOOK 33 2-in-1 Detachable offers the best of all worlds for mobile workers. Target industries for the device include field service workers, maintenance and service technicians in utilities and telecommunications, as well as government agencies, defence, the police and other emergency services.

- Intel® Core™ i5-10310U vPro™ processor
- Windows 11 Pro / Windows 10 Pro Downgrade available
- Next generation Dual-touch (with digitiser) display with 3:2 aspect ratio
- 12.0" QHD (2160 × 1440) anti-reflective high brightness outdoor display (up to 1200cd/m²)
- Capacitive 10 finger multi-touchscreen with glove and rain modes
- Digitiser pen embedded in the tablet part
- Detachable keyboard with various enterprise ports and backlit** keys
- Fully rugged design with water and dust resistance (IP65)***
- User exchangeable and hot-swappable twin batteries
- Up to 10 hours battery life with standard twin batteries

(MobileMark™ 2014)

- Up to 20 hours battery life with extended* twin batteries (MobileMark™ 2014)
- Flexible configuration port**** and business expansion module****
- Vehicle mount* available for both notebook and tablet

* The Windows 11 upgrade will be delivered to qualifying devices late 2021 into 2022. Timing will vary by device. Certain features require specific hardware (see aka.ms/windows11-spec).

**Optional

***Tested at Panasonic factory and does not guarantee against damage or malfunction

****One option exclusively possible in configuration port / business expansion module

All technical specifications are subject to change without notice.





TOUGHBOOK 33 TABLET

WINDOWS 11 PRO 12" FULLY RUGGED TABLET

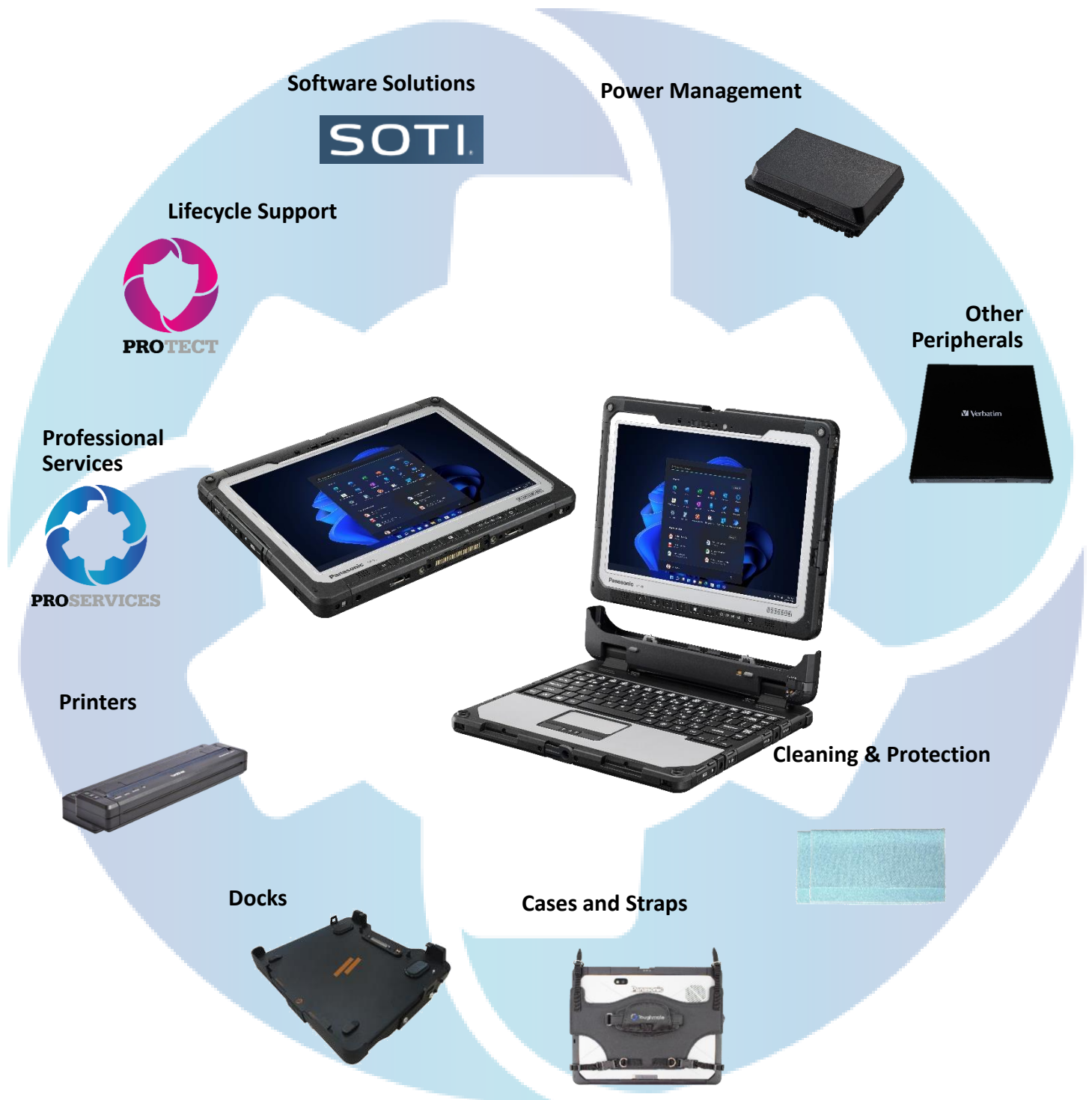
TOUGHBOOK 33 Tablet, the 12.0" fully rugged device with hot swappable twin batteries and highly configurable capabilities brings unrivalled flexibility and performance for mobile business computing. Thanks to the optional detachable keyboard, the TOUGHBOOK 33 Tablet offers the best of all worlds for mobile workers. Target industries for the device include field service workers, maintenance and service technicians in utilities and telecommunications, as well as government agencies, defence, the police and other emergency services.

- Intel® Core™ i5-10310U vPro™ processor
- Windows 11 Pro / Windows 10 Pro Downgrade available
- Next generation Dual-touch (with digitiser) display with 3:2 aspect ratio
- 12.0" QHD (2160 × 1440) anti-reflective high brightness outdoor display (up to 1200cd/m²)
- Capacitive 10 finger multi-touchscreen with glove and rain modes
- Digitiser pen embedded in the tablet
- Optional detachable keyboard with various enterprise ports and backlit* keys
- Fully rugged design with water and dust resistance (IP65)**
- User exchangeable and hot-swappable twin batteries
- Up to 11 hours battery life with standard twin batteries (MobileMark™ 2014)
- Up to 22 hours battery life with extended* twin batteries (MobileMark™ 2014)
- Flexible configuration port*** and business expansion module***
- Optional vehicle mount

All technical specifications are subject to change without notice.



TOUGHBOOK 33 ACCESSORY ECOSYSTEM



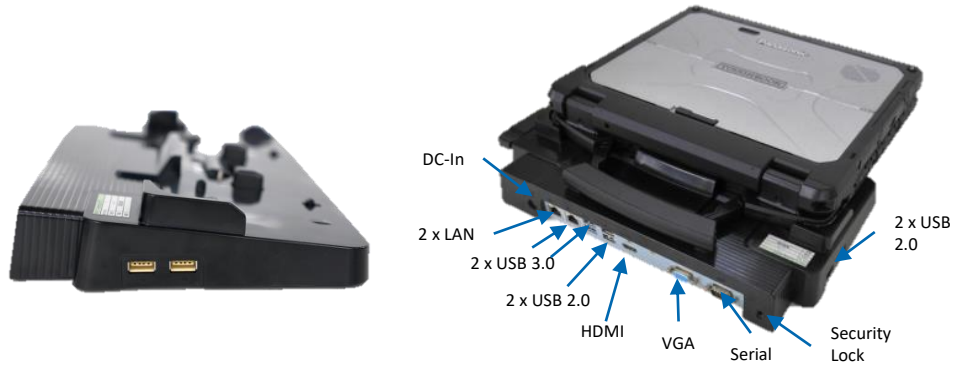
All accessories in this guide are fully tested and certified in the Panasonic factory by Panasonic engineers

DOCKING SOLUTIONS

Desktop Port Replicator

AC adaptor not included. Use CF-AA5713A

Part No: **CF-VEB331U**



TOUGHBOOK 33 Laptop Vehicle Dock (GJ)

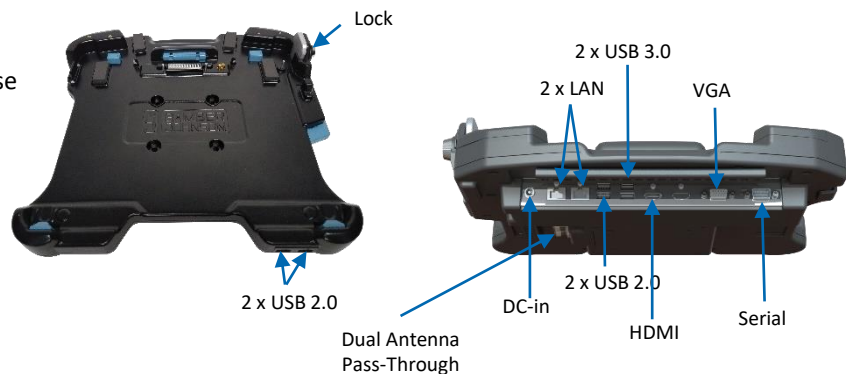
No power adaptor included. Keyed alike unless otherwise stated.

Dimensions: 358 x 343 x 89 mm / 14.1 x 13.5 x 3.5"

Weight: 3 kg / 6.7 lb

Part Nos:

- **PCPE-GJ33V06** – Full port replication, No RF
- **PCPE-GJ33V07** – Full port replication, Dual RF
- **PCPE-GJ33V08** – Non-electronic cradle



TOUGHBOOK 33 Laptop Vehicle Dock (Havis)

No power adaptor included. Keyed alike unless otherwise stated. Full port replication.

Dimensions: 300 x 327 x 88.9 mm / 11.83 x 12.88 x 3.50"

Weight: 2.44 kg / 5.38 lbs.

Part Nos:

- **PCPE-HAV3316** – Full port replication, No RF
- **PCPE-HAV3317** – Full port replication, with RF



All technical specifications are subject to change without notice.



DOCKING SOLUTIONS

Tablet Cradle

AC adaptor not included.

Use CF-AA5713A

Part No: **CF-VEB32W**

Front



Right

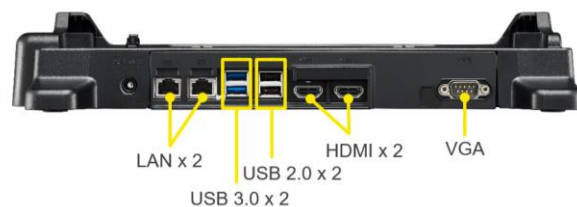


Left



USB 2.0 x 2

Rear



LAN x 2

USB 2.0 x 2

HDMI x 2

VGA

USB 3.0 x 2

TOUGHBOOK 33 Laptop Vehicle Dock (GJ)

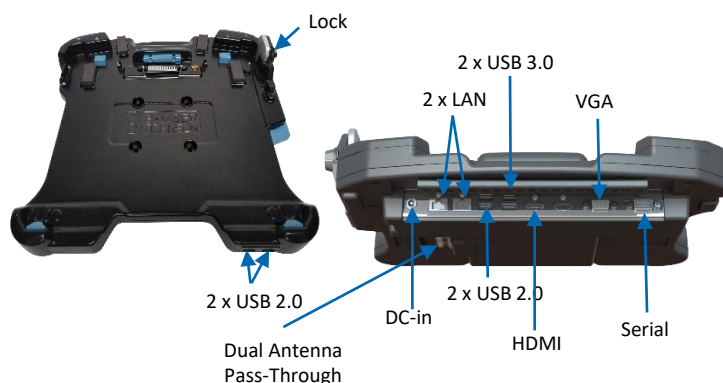
No power adaptor included. Keyed alike unless otherwise stated.

Dimensions: 358 x 343 x 89 mm / 14.1 x 13.5 x 3.5"

Weight: 3 kg / 6.7 lb

Part Nos:

- **PCPE-GJ33V06** – Full port replication, No RF
- **PCPE-GJ33V07** – Full port replication, Dual RF
- **PCPE-GJ33V08** – Non-electronic cradle
- **PCPE-GJ33V13** – Full port replication, No RF, **NO HDMI & VGA**
- **PCPE-GJ33V14** – Full port replication, Dual RF, **NO HDMI & VGA**



TOUGHBOOK 33 Laptop Vehicle Dock (Havis)

No power adaptor included. Keyed alike unless otherwise stated. Full port replication.

Dimensions: 300 x 327 x 88.9 mm / 11.83 x 12.88 x 3.50"

Weight: 2.44 kg / 5.38 lbs.

Part Nos:

- **PCPE-HAV3316** – Full port replication, No RF
- **PCPE-HAV3317** – Full port replication, with RF



All technical specifications are subject to change without notice.



PROSERVICES

DOCKING SOLUTIONS

Gamber Johnson TOUGHBOOK 33 Tablet Vehicle Dock

No power adaptor included. Keyed alike unless otherwise stated.

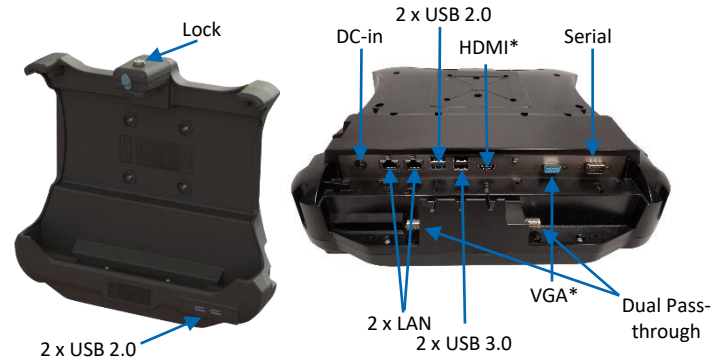
Dimensions: 317.5 x 336.5 x 114.3 mm / 12.5 x 13.25 x 4.5"

Max Weight: 1.88 kg / 4.15 lb

Part Nos:

- **PCPE-GJ33V01** - Non-electronic
- **PCPE-GJ33V02** - Full port replication, No RF
- **PCPE-GJ33V03** - Full port replication, Dual RF
- **PCPE-GJ33V04** - Lite port replication*, No RF

*No HDMI or VGA with "Lite" port replication



Gamber Johnson TOUGHBOOK 33 Slim Tablet Vehicle Dock

No power adaptor included. Keyed alike unless otherwise stated.

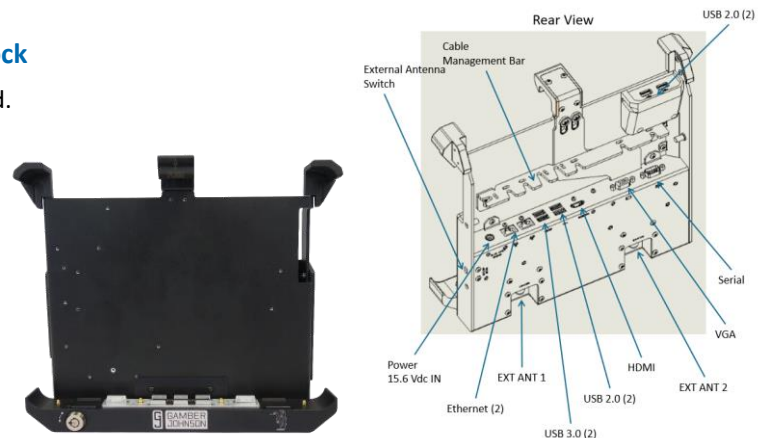
Dimensions: 314 x 274 x 76 mm / 12.3 x 10.8 x 3"

Max Weight: 2.7 kg / 6 lbs

Part Nos:

- **PCPE-GJ33V11** - Full port replication, no RF
- **PCPE-GJ33V12** - Full port replication, Dual RF

*No HDMI or VGA with "Lite" port replication



Havis TOUGHBOOK 33 Tablet Vehicle Dock

No power adaptor included. Keyed alike unless otherwise stated.

Dimensions: 300 x 327 x 88.9 mm / 11.83 x 12.88 x 3.50"

Max Weight: 1.4 kg / 3.0 lb

Part Nos:

- **PCPE-HAV3305** - Lite port replication*, no RF
- **PCPE-HAV3306** - Lite port replication*, with dual RF
- **PCPE-HAV3309** - Full port replication, no RF
- **PCPE-HAV3310** - Full port replication, with dual RF

*No HDMI or VGA with "Lite" port replication



All technical specifications are subject to change without notice.

PRODUCTIVITY SOLUTIONS

Panasonic IP55 Digitiser Pen

Part No: **CF-VNP023U**



Stylus Tether

Part No: **CF-VNT002U**



TOUGHBOOK 33 Standard Keyboard

AC adaptor not included –
please use CF-AA5713A.

Part No: **CF-VEK331NEP** (UK)



Other languages available on request.

Mini USB Keyboard

With integrated touchpad.

Part No: **PCPE-KEYB**



Rugged USB Keyboard

For in-vehicle use. IP64.

Part No: **PCPE-MMRK01***

*E: UK; F: French; G: German



Mini Rugged Bluetooth Keyboard

Part Nos: **PCPE-ACDS***

*UK1: UK ; FR1: French; GR1: German



Mini Antibacterial USB Keyboard

Part No: **PCPE-ACCABK***

*1: UK; 3: French; 4: German



All technical specifications are subject to change without notice.



CARRYING SOLUTIONS

Breakable Shoulder Strap

For use with most cases.
Attachment via D-rings.

Part No: **PCPE-SYSSSB1**



Shoulder Strap for TOUGHBOOK 33 Tablet

Part No: **CF-VNS331U**



User Harness

Attaches to any Toughnook
33 that provides 4-drings

Part No: **PCPE-INFUVA1**



Generic DuraStrap

For use with most cases.
Attachment via D-rings.

Size: 1651 x 25.4 x 6.35 mm /
65 x 1 x 0.25"

Weight: 136 g / 0.3 lb

Part No: **PCPE-INFGNDS**



Deluxe Shoulder Strap

For use with most cases.
Attachment via D-rings.

Size: 38 x 1442 mm / 1.5 x
56"

Weight: 0.14 kg / 0.3 lb

Part No: **PCPE-INFSS02**



Synergy 15.4" Laptop Rucksack

Size: 254 x 330 x 460 mm / 10
x 13 x 18"

Weight: 1 kg / 2.2 lbs

Part No: **PCPE-WENSYN1**



All technical specifications are subject to change without notice.



POWER MANAGEMENT SOLUTIONS

Standard 3 Cell Battery

Part No: **CF-VZSU1AW**



Extended 6 Cell Battery

Part No: **CF-VZSU1BW**

Please note: Extended batteries are compatible only with main units configured for an extended battery.



4-bay Battery Charger

Compatible with both standard and extended battery packs.
Contains power lead.

Part No: **CF-VCB331***

* E: UK; G: EU; T: Italy; D: Switzerland



AC Power Supply

For use with device and desk dock.

Part No: **CF-AA5713A2***

*E: UK; G: EU; T: Italy; D: Switzerland



Charger For Forklifts

Part Nos:

- **PCPE-LNDFH11:** 70-110V
- **PCPE-LNDFH32:** 12-32V
- **PCPE-LNDFH60:** 20-60VDC



Car Charger

120 W, 12-32Vdc input

Part No: **CF-LND1224A**



Car Charger

90W, 12-16VDC input

Part Nos:

- **CF-LND80S-FD** – cigarette plug
- **CF-LND80SBW** – Bare wire



Car Charger

90 W, 12-32VDC input

Part Nos:

- **CF-LND8024FD** - cigarette plug
- **CF-LND8024BW** - bare wire



Mil Spec Car Charger

Part No:

- **PCPE-LND3676** - 120W, 22-32 VDC



All technical specifications are subject to change without notice.



PROSERVICES

PRODUCTIVITY SOLUTIONS

Replacement TOUGHBOOK 33 Digitiser Pen

IP55 rated.

Part No: **CF-VNP023U**



Stylus Tether

Part No: **PCPE-INFUVA2**



USB External Disc Drive

Part No:

- **PCPE-FCDVR06** - Blu-ray
- **PCPE-FCDVR05** – CD/DVD



SECURITY & PROTECTION SOLUTIONS

Kensington Lock

Part No: **PCPE-KENLOK2**



LCD Screen Cleaning Cloth

Part No: **CF-VNC002UU**

MOQ: 10 pcs



All technical specifications are subject to change without notice.



MOBILE PRINT SOLUTIONS

PJ7 Series A4 Mobile Printers

Perfectly dimensioned for your briefcase or computer bag, PJ7 series of compact, direct thermal printers can also be easily mounted in your vehicle. Take it out on the road and make sure your clients and customers receive those all-important documents in an instant. Available with 300 dpi print resolution, and with USB, Bluetooth or Wi-Fi.

Part No.: **PCPE-BRPJ763**
PCPE-BRPJ773

PJ763 A4 mobile printer, 300 dpi with USB & Bluetooth
PJ773 A4 mobile printer, 300 dpi with USB, Wi-Fi and AirPrint



All technical specifications are subject to change without notice.

PROFESSIONAL SERVICES

Custom BIOS Services

Part No: **PCPE-PSBIOSG**

Autopilot Enrolment

Part No: **PCPE-PSAUTOP**

SIM Installation

Part No: **PCPE-PSSIMIN**

Information Management Bundle

IMEI, MAC, SIM, ASSET, Hardware Hash reporting.

Part No: **PCPE-PSATAGB**

Solution Packaging

Up to 10 items packaged together in a box.

Does not include custom designed case.

Part No: **PCPE-PSSPACK**

Custom Imaging

Part Nos:

- **PCPE-PS20GIM** - Image deployment per device (MOQ 30)
- **Custom Image Creation** - Price on request.

Customer Branding

Logo badge on device casing or bezel.

Part No: **PCPE-PSLOGOB**

Asset Tagging

Standard, using CPE label set.

Part No: **PCPE-PSATAG1**

Custom Logistics

Part No: **PCPE-PSCDL01**

Price on Request.

All technical specifications are subject to change without notice.

LIFECYCLE SUPPORT SOLUTIONS

Extended Warranty

Panasonic's Extended Warranty provides an additional two years of warranty, helping you to minimise repair costs and maximise the life cycle of your Toughbook or TOUGHBOOK.

Part No.: CF-LESPEW* *4 / 5

Accidental Damage Warranty

Panasonic's Accidental Damage Warranty provides protection against any eventuality out in the field for up to 5 years, providing you and your workforce with complete peace of mind.

Part No.: CF-LESPAD* *3 / 4 / 5 (4 & 5 year options include Extended Warranty)

Smart Battery Warranty

Smart Service Lite battery analytics, powered by B2M, monitor device battery health in real-time. Smart Service Lite will alert you when batteries deployed in the field reach a low capacity level so a replacement battery can be sent out in advance.

Part No.: CF-LESPBASS* *3 / 4 / 5



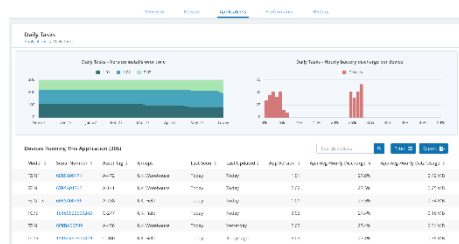
All technical specifications are subject to change without notice.

TOUGHBOOK Smart Service

Real time analytics, powered by B2M Solutions, showing the health and performance of your estate of mobile devices, focussing on areas such as battery life, data usage, disruptions and connectivity. Enables the user to recognise patterns of usage and potentially pre-empt issues before they arise.

Part Nos.:

- **CF-LESPSSSM3** 3 year Smart Service self-managed licence
- **CF-LESPSSSM5** 5 year Smart Service self-managed licence

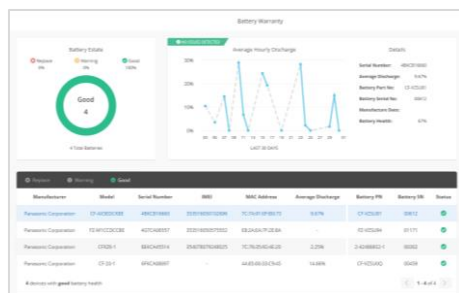


Smart Battery Monitor

An additional “Smart” module that monitors battery usage and health in detail, focusing on battery serial numbers, the software allows the customer to track, identify and replace batteries before they impact productivity. With dashboard access and alerts.

Part Nos.:

- **CF-LESPBAEE1** 1 year Smart Battery Monitor software licence
- **CF-LESPBAEE3** 3 year Smart Battery Monitor software licence
- **CF-LESPBAEE5** 5 year Smart Battery Monitor software licence

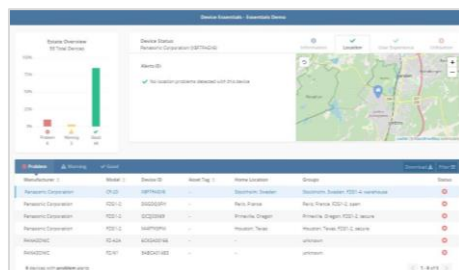


Smart Device Monitor

An additional “Smart” module that monitors device usage in more detail. Dashboard access provides information such as device location; user experience, including drop detection on Android devices and also enables alerts and geofences to be set up.

Part Nos.:

- **CF-LESPDAEE1** 1 year Smart Device Monitor software licence
- **CF-LESPDAEE3** 3 year Smart Device Monitor software licence
- **CF-LESPDAEE5** 5 year Smart Device Monitor software licence





SOFTWARE SOLUTIONS – PREMIER PARTNERS



Absolute Data and Device Security

Patented technology to centrally secure TOUGHBOOK devices for unrivalled endpoint security and data risk management.

Part numbers available upon request.

Website: <https://www.absolute.com/partners/oem/panasonic/>



NetMotion Mobility

More than just a VPN, “Mobility” Mobile Performance Management software can dynamically maintain access to applications through changing network conditions, allowing mobile workers to remain productive anywhere their work takes them. Diagnostics option also available.

Part numbers available upon request.

Website: <https://www.netmotionsoftware.com/products/mobility>



SOTI MobiControl

MobiControl is an Enterprise Mobility Management (EMM) solution with enhanced EMM features like application management, content management, location services and remote help.

Part numbers available upon request.

Website: <https://www.soti.net/products/soti-mobicontrol/>



Sygic

Sygic Professional GPS Navigation works offline and features truck specific routing, itinerary with time windows and over 60 APIs for development with Android and Windows based apps.

Part numbers available upon request.

Website: <https://www.sygic.com/enterprise/professional-gps-navigation-sdk>

For more info on these software solutions, please refer to the co-branded data sheet [here](#).



SOFTWARE SOLUTIONS – CERTIFIED PARTNERS



StayLinked

StayLinked's SmartTE software provides a cost-effective way to take advantage of touchscreen devices with Terminal Emulation by transforming traditional "green screen" application screens into easy-to-use, graphical screens with no changes to the underlying enterprise applications.

For more information or to request a demo, visit:
<https://www.staylinked.com/panasonic>



Loqus

Loqus Fleet Ltd specialises in the provision of end-to-end Transport management systems providing organisations with the necessary tools to help them Plan, Execute and Monitor & Control work orders from initial order taking down to the last mile. Headquartered in Malta, the group employs a passionate team of high calibre software engineers supported by an experienced management team

Visit website: <http://openfleet.loqusgroup.com/>



Acronis

Acronis sets the standard for cyber protection and hybrid cloud storage through its innovative backup, anti-ransomware, disaster recovery, storage, and enterprise file sync and share solutions. Enhanced by its award-winning AI-based active protection technology, blockchain-based authentication and unique hybrid-cloud architecture, Acronis protects all data in any environment – including physical, virtual, cloud, mobile workloads and applications – all at a low and predictable cost.

Visit website: <https://www.acronis.com>



GPC Systems

GPC is an award-winning software house with over 25 years of experience working with a range of sectors across the globe. Driven by the needs of their customers in healthcare, transportation, police, logistics and local government, GPC strives to improve outcomes through the most efficient use of resources. GPC has in-depth experience creating solutions utilising 3D cameras, including the Intel® RealSense™ technology integrated into the TOUGHBOOK M1.

Visit website: <https://www.gpcsl.com/>

All technical specifications are subject to change without notice.



ACCESSORY SUMMARY 1

| Solution Type | Part Number | Description |
|--------------------|-------------------------------|------------------------------------------------------|
| Power Management | CF-VZSU1AW | Standard 3 Cell Battery |
| | CF-VZSU1BW | Extended 6 Cell Battery |
| | CF-VCB331E/G/T/D | 4-Bay Battery Charger |
| | CF-AA5713A2E/G/T/D | AC Power Supply |
| | CF-LND1224A | Car Charger (120W, 12-32 VDC) |
| | CF-LND80S-FD/BW | Car Charger (90W, 12-16 VDC) |
| | CF-LND8024FD/BW | Car Charger (90W, 12-32 VDC) |
| | PCPE-LNDFH11 | Car Charger (70-110V) For forklift |
| | PCPE-LNDFH32 | Car Charger (12-32V) For forklift |
| | PCPE-LNDFH60 | Car Charger (20-60VDC) For forklift |
| | PCPE-LND3676 | Mil Spec Car Charger (120W, 22-32 VDC) |
| Docking Solutions | CF-VEB331U | TOUGHBOOK 33 Desktop Port Replicator |
| | CF-VEB332W | TOUGHBOOK 33 Tablet Cradle |
| | PCPE-GJ33V 06/07/08/13/14 | Gamber Johnson TOUGHBOOK 33 Laptop Vehicle Dock |
| | PCPE-GJ33V 01/02/03/04//06 | Gamber Johnson TOUGHBOOK 33 Tablet Vehicle Dock |
| | PCPE-GJ33V 11/12 | Gamber Johnson TOUGHBOOK 33 Slim Tablet Vehicle Dock |
| | PCPE-HAV33 16/17 | Havis TOUGHBOOK 33 Laptop Vehicle Dock |
| | PCPE-HAV33 05/06/07/10 | Havis TOUGHBOOK 33 Tablet Vehicle Dock |
| Styluses | CF-VNP023U | Panasonic IP55 Digitiser Pen |
| | CF-VNT002U | Stylus Tether |
| Keyboards | CF-VEK331NEP | TOUGHBOOK 33 Standard Keyboard (UK) |
| | PCPE-KEYB | Mini USB Keyboard |
| | PCPE-MMRK01E/F/G | Rugged USB Keyboard |
| | PCPE-ACDSUK1/FR1 | Mini Rugged Bluetooth Keyboard |
| | PCPE-ACCABK1/2/3/4 | Mini Antibacterial USB Keyboard |
| Carrying Solutions | PCPE-SYSSSB1 | Breakable Shoulder Strap |
| | CF-VNS331U | Shoulder Strap for TOUGHBOOK 33 Tablet |
| | PCPE-INFUVA1 | User Harness |
| | PCPE-INFSS02 | Deluxe Shoulder Strap |
| | PCPE-INFGNDS | Generic Dura Strap |
| | PCPE-INFBPK1 | General Backpack |
| | PCPE-WENSYN1 | Synergy 15.4" Laptop Rucksack |

All technical specifications are subject to change without notice.

ACCESSORY SUMMARY 2

| Solution Type | Part Number | Description |
|-----------------------------|---------------------|------------------------------------------------------------------------|
| Protection & Security | CF-VNC002U | Cleaning Cloth for LCD |
| | PCPE-KENLOK2 | Kensington Lock |
| | PCPE-FCDVR05 | Slimline External CD/DVD Writer |
| | PCPE-FCDVR06 | Slimline External Blu-Ray Writer |
| Mobile Printing Solutions | PCPE-BRPJ763 | PJ763 A4 mobile printer, 300 dpi with USB & Bluetooth |
| | PCPE-BRPJ773 | PJ773 A4 mobile printer, 300 dpi with WiFi, USB & Bluetooth |
| Professional Services | PCPE-PSBIOSG | Custom BIOS Service – Gold |
| | PCPE-PS20GIM | Image deployment per device (MOQ 30) |
| | PCPE-PSSIMIN | SIM Installation |
| | PCPE-PSATAG1 | Asset Tagging |
| | PCPE-PSATAGB | Information Management Bundle |
| | PCPE-PSAUTOP | Autopilot Enrolment |
| | PCPE-PSLOGOB | Custom logo badge |
| | PCPE-PSSPACK | Solution Packaging |
| | PCPE-PSCDL01 | Customised Deployment / Logistics |
| | PCPE-PSBTM01 | Bespoke Training Material |
| Smart Services | CF-LESPSSSM3/5 | Smart Service self managed licence – 3 or 5 years |
| | CF-LESPBAEE1/3/5 | Smart Battery Monitor software licence – 1, 3 or 5 years |
| | CF-LESPDAEE1/3/5 | Smart Device Monitor software licence – 1, 3 or 5 years |
| Lifecycle support solutions | CF-LESPEW* 4/5 | Extended Warranty |
| | CF-LESPAD* 3/4/5 | Accidental Damage Warranty |
| | CF-LESPBASS* 3/4/5 | Smart Battery Warranty |

All technical specifications are subject to change without notice.