

A large, pixelated, white 3D head sculpture, resembling a classical bust, is the central focus. It is composed of many small, white cubes. The head is positioned in the center of a dark arena. Several bright spotlights (blue, yellow, and green) are directed at the head from above. The arena floor is dark, and the walls are also dark. In the foreground, there are rows of empty, dark-colored seats, suggesting a large conference or exhibition hall. The overall atmosphere is futuristic and high-tech.

Panasonic
BUSINESS

DELIVER THE EXTRAORDINARY

Elevate your convention, exhibition and conference
centre capabilities to spectacular new heights



Are you ready to meet the priorities of event organisers?

Recent research has shown that as the world of conferences and exhibitions continues to evolve and expand, event organisers have three key priorities in mind:



Creating extraordinary attendee experiences and engagement



Delivering hybrid events that are both physical and virtual



Achieving greater sustainability and reducing the environmental impact of their events

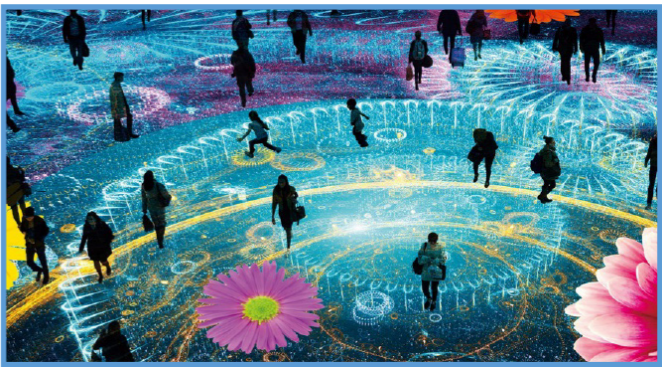


Give your customers what they want with Panasonic

With the help of Panasonic, you can ready your conference centre to provide exactly what event organisers are looking for.

Create extraordinary experiences

With a true glass-to-glass solution, we can ensure any space – from small rooms to enormous auditoriums – is used productively, efficiently and spectacularly, leaving audiences astonished and inspired. With 4K displays ranging from 43-98” and projectors varying in brightness up to 50,000 lumens, our technology can work alongside you in every conference area.



Enable hybrid events

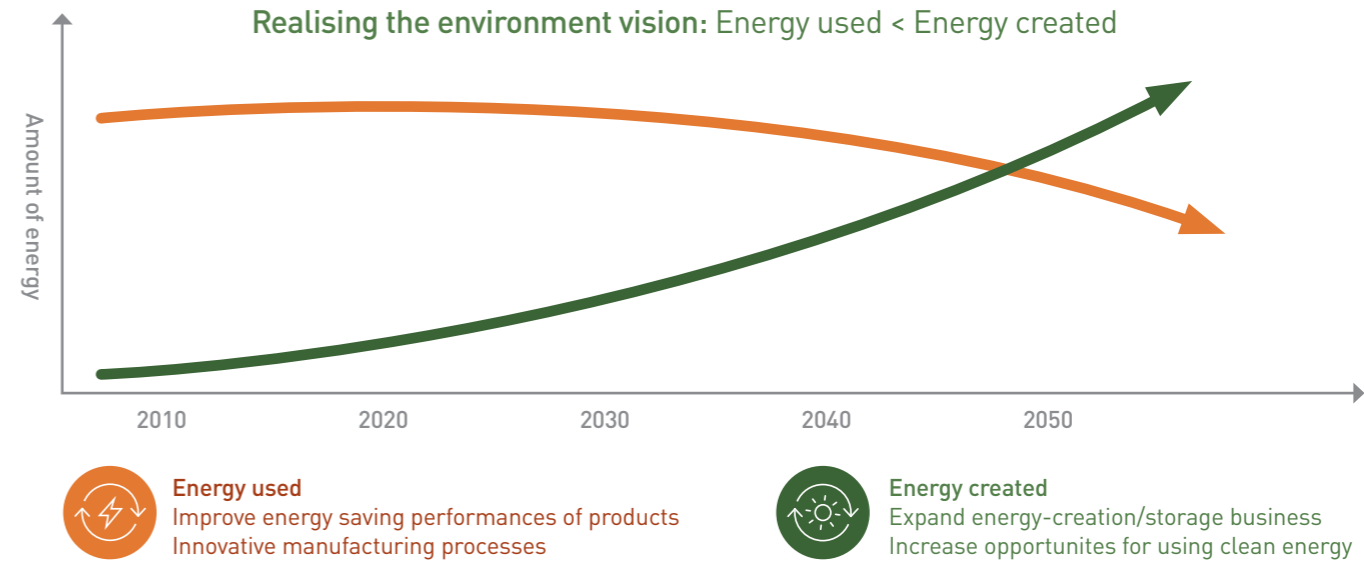
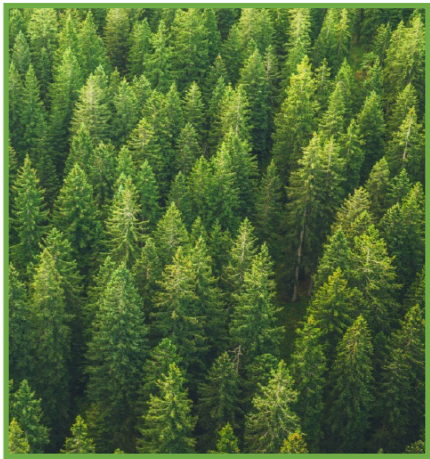
Every event today needs to build in the ability to become hybrid or virtual in an instant. Using the right technology, seamless integration between live and remote audiences (and presenters) becomes possible.

Panasonic’s remote camera infrastructure, including automated PTZ models and Kairos, our IT/IP platform which can take in a host of signal inputs and output them to any format or resolution, allows events to be streamed live to new (and growing) audiences throughout the world.

Achieve extraordinary sustainability

Research shows that 92% of event professionals believe sustainability must be integrated into the industry’s recovery. Today, it has become a key factor as planners evaluate their conference centre options.

With Panasonic’s help, you can put your venue at the top of the sustainability table, helping to achieve environmental, social and economic benefits. As a global business, we’re working towards a position in which we create more energy than we use, helping to build a society driven by cleaner energy and promoting healthier living. By integrating our technology into your venue, you can join this movement, minimising your environmental impact and improve your gworldwidereputation as a responsible commercial partner.





Access extraordinary breadth, reliability and TCO

Around the world, Panasonic is the preferred partner of the world's most prominent conference centres, playing a key role in many of the most spectacular events, congresses and exhibitions.

So why do partners choose us – and how could we make a difference to your venue?

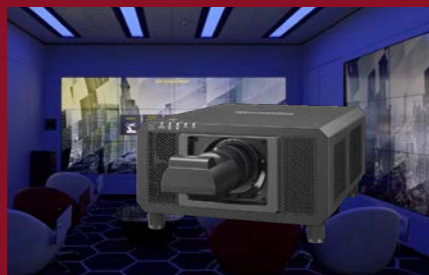
Glass-to-glass solutions

From capturing and mixing to distribution and display, we provide a complete chain of content production.



Our PTZ cameras have wide-angle lenses enabling wide-area shooting in limited installation areas, and high zoom ratios permitting filming in large indoor spaces.

Kairos, our IT/IP platform, can also take in a host of signal inputs and output them to any format or resolution.



Our projectors, ranging up to 50,000 lm, make us the world leader in high-brightness projection. Our 4K displays are available in 43-98" format, with video wall options that are perfect for stunning events, and touchscreen for instant interactivity.



We also provide wireless presentation systems, from the PressIT plug-and-play content delivery system to the WolfVision dongle-free, fully integrated SDM version, both of which don't require any complex cabling or set up – you simply start presenting.



More interaction and engagement

Our glass-to-glass presentation and plug-and-play collaboration technology makes knowledge sharing, interaction and multi-site engagement more achievable than ever before.



Ultra-reliability

Our products are ultra-reliable in mission-critical applications. They go through the most rigorous and extreme environmental testing (drop, dust, earthquake, temperature) and ensure the show always goes on, thanks to unique redundant light-source system and the ability to operate in temperatures between 0-45°C.



Easier integration

Smaller, more lightweight design gives our technology a smaller footprint and easier integration into your conference venue. Technical innovations in our projectors – airflow design, new cooling system and an improved laser, for example – means more efficient performance, easier operation, and cost and space saving for you.



Lower TCO

Our technology gives you a far lower total cost of ownership, with projectors offering 20,000 hours of maintenance-free operation and reduced installation effort, meaning they fit easily into existing systems. Remote monitoring and early warning systems also mean expensive problems are avoided before they happen.

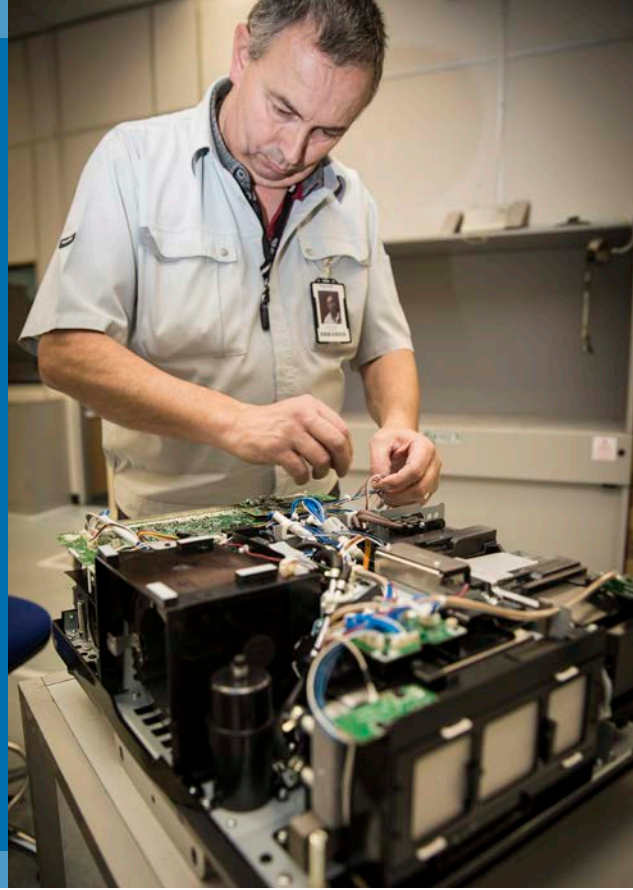
We're already the partner of choice for many world-leading conference centres – so why not talk to us today to learn how you could join the roll-call of renowned names?



World-leading technology backed by standard-setting service

Great technology is nothing without great service. So we give you expert support before the event technology is even installed in your venue. From consulting on the right solutions for your conference centre right through to the installation and integration of your new technology, our sales engineers will be alongside you to make sure everything runs smoothly and without complication.

In addition to that, Panasonic projectors and broadcast & ProAV products come with our market-leading 'Premium Service' warranty which includes:



A 3-year parts, labour and logistics warranty for product failure



A quick average repair time of 5 days at our European Repair Centre
Technical support



Ability to purchase warranty extensions to further safeguard your investment



Loan units available on request, dependent on availability



Centralised helpdesk covering all main European languages



Web-based repair booking and tracking, asset management and engineering information

Panasonic

BUSINESS

Talk to us about transforming your conference centre

Visit info.business.panasonic.eu/MICE_Contact-Us_EN.html

