



Support pin automatic exchange
(option)



Model ID **SPG2** Model No. NM-EJP1B

- Supporting high accuracy/density printing
- Enhancing automation and labor-saving functions



*It may not conform to Machinery Directive and EMC Directive in case of optional configuration and custom-made specification.

Model ID	SPG2
Model No.	NM-EJP1B
PCB dimensions *1	L 50 mm × W 50 mm to L 510 mm × W 510 mm
PCB exchange time*2	14 sec including transfer, PCB positioning and recognition, printing and regular cleaning (when PCB is L 250 mm × W 150 mm)
Repeatability	2 Cpk ± 4.0 μm 6 σ (±3 σ) (Under conditions specified by Panasonic)
Printing accuracy	2 Cp ± 15.0 μm 6 σ (±3 σ) (Under conditions specified by Panasonic)
Screen frame dimensions *3	L 736 mm × W 736 mm, L 750 mm × W 750 mm, L 650 mm × W 550 mm, L 600 mm × W 550 mm L 550 mm × W 650 mm, L 584 mm × W 584 mm, L 736 mm × W 584 mm, L 584 mm × W 736 mm
Electric source *4	1-phase AC 200, 220, 230, 240 V ±10V (tap changing available) Max.2.5 kVA
Pneumatic source	0.5 MPa, 30 L / min (A.N.R.) (Blower motor vacuum spec), 400 L / min (A.N.R.) (ejector vacuum spec)
Dimensions *5	W 1 580 mm × D 1 800 mm × H 1 500 mm
Mass *6	1 600 kg

*Values such as cycle time and accuracy may vary depending on operating conditions.

*Please refer to the "Specification booklet" for details.

*1: The max PCB width changes when "Support pin automatic exchange" or "Attack angle variable squeegee" has been selected. For details, see specifications.

*2: PCB exchange time varies depending on the machine in the pre-process and the post process, the PCB size, the use of a PCB pressing-down unit and so forth.

*3: For mask specifications, please see the specification.

*4: Including blower and vacuum pump"Option"

*5: Except for the signal tower and the touch panel.

*6: With full options

Supporting high accuracy/density printing

● New operation panel

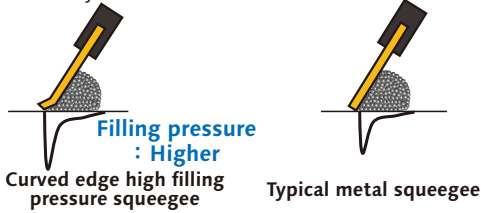
- ① A large-sized panel (15-inch) introduced to increase ease of use and visibility.
- ② Screen configuration reviewed (a reduction in the number of screens) to decrease the screen handling time required.

An increase in size from 8.4 - to 15-inch



● Curved edge high filling pressure squeegee

A metal squeegee of which the curved blade edge can enhance its filling performance. As is the case with typical metal squeegees, it is easy to handle.



● Top/side clamber (movable type) (option)

Pressing down on PCB edge faces increases printing quality of warped PCB. Either PCB upper or side face can be selected for correction.



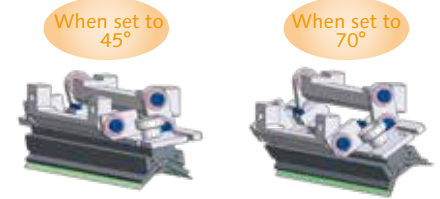
● Morene Block

Comes in contact with the mask using magnet **repellence** to prevent solder side leakage during printing. Simple construction for easy cleaning.



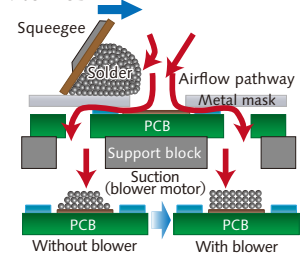
● Attack angle variable squeegee (option)

The set squeegee angle can be adjusted, using the front and rear squeegee vertical axes, between 45° and 70°.



● PCB pickup blower (switch type)

Printing transcription is improved through the use of blower to create airflow pathways from metal mask to PCB.



Enhancing automation and labor-saving functions

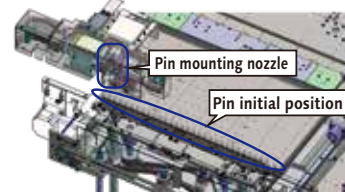
● Holed pot type automatic solder supply (option)

Solder supply automated to promote labor saving and operation without interruption.

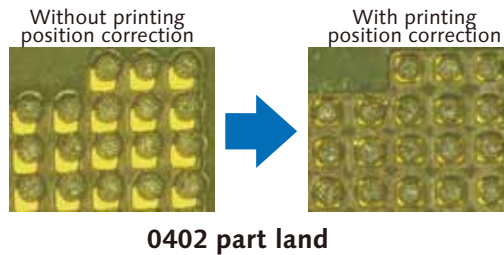
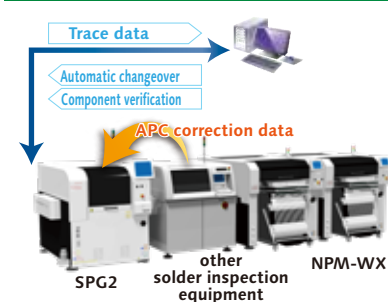


● Support pin automatic exchange (option)

Automated collection/arrangement of support pins during changeover to save manpower.



M2M Line solution



According to the correction data of shifted printing positions analyzed by solder paste inspection equipment (APC correction data), it corrects printing positions (X, Y, θ).

*Solder inspection equipment of other companies can also be connected.
*Please inquire with your sales representative for more details.

The following functions can be supported by connecting with an upper system (LNB, LWS...).

- Automatic changeover
- Component verification (solder/mask/squeegee...)
- Trace data output

*About the specification and system configuration, please refer to the "Specification" for details.

⚠ Safety Cautions

- Please read the User's Manual carefully to familiarize yourself with safe and effective usage procedures.
- To ensure safety when using this equipment, all work should be performed according to that as stated in the supplied Operating Instructions. Read your operating instruction manual thoroughly.

Panasonic Group products are built with the environment in mind.

Please check the homepage for the details.
panasonic.com/global/corporate/sustainability

Inquiries...

Panasonic Connect Europe GmbH
Caroline-Herschel-Straße 100
85521 Ottobrunn · Germany

PFSE.info@eu.panasonic.com

<https://pfse.panasonic.eu/>

Panasonic Connect Co., Ltd.
Process Automation Business Division

3-1-1 Inazu-cho, Toyonaka City, Osaka
561-0854, Japan

All data as of April 1, 2022

Ver. April 1, 2022

© Panasonic Connect Co., Ltd. 2022