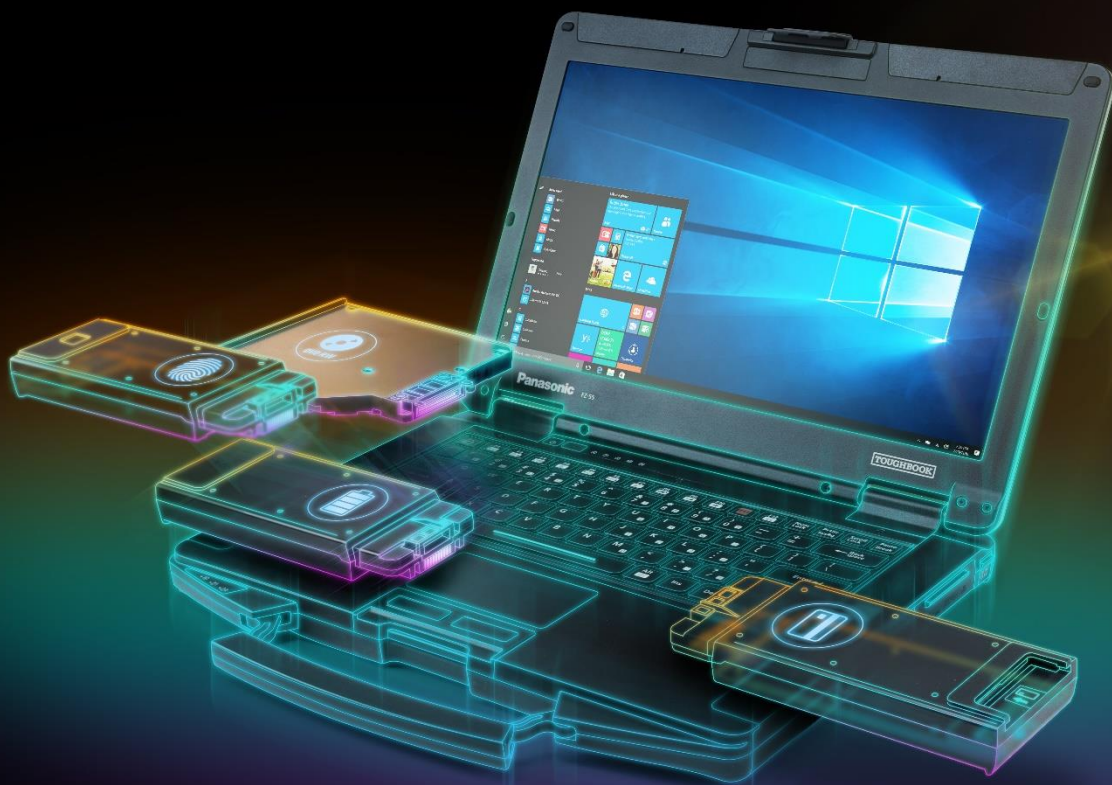


**Panasonic**  
BUSINESS

## TOUGHBOOK 55 mk2 Solution Guide

**TOUGHBOOK**





# TOUGHBOOK 55

## 14" RUGGED WINDOWS 10 PRO NOTEBOOK WITH HD DISPLAY

TOUGHBOOK 55 with Windows 10 Pro, magnesium chassis, flexible configurations and universal bay is the most versatile 14" rugged Toughbook ever built, but doesn't compromise on durability, with a unique 'honeycomb' design for improved strength and splash resistant design.

In terms of flexibility, the TOUGHBOOK 55 is equally outstanding. It offers a huge array of flexible configuration options, making it easier for customers to have exactly the device they want.

### HD Model:

- Intel® Core™ i5-1145G7 vPro™ Processor
- Windows 10 Pro / Free Upgrade to Windows 11\* (when available,
- see below) 14" HD Active Matrix LCD
- Lightweight and slim design (approx. 2.08 kg and 32.8mm)
- 8GB DDR4 RAM and 256GB NVMe OPAL SSD
- 2x USB 3.2, 1x Thunderbolt 4, 1x HDMI, 1x LAN and micro SDCX
- Front and Rear Expansion Slot
- TOUGHBOOK Universal Bay
- Long battery life of up to 19 hours (MobileMark 2014)
- Dedicated GNSS and 4G LTE with eSIM optional
- -29 °C to +60 °C operating temperature
- Robust honeycomb-style magnesium casing with carry handle
- IP53 Ingress Protection\*\*
- Withstands drops from a height of 91cm\*\*
- Shock and vibration protected for vehicle docking

### Full HD Model:

*All the above, plus:*

- 14" Full-HD Active Matrix LCD, 1.000cd/m<sup>2</sup> brightness
- Long battery life of up to 18 hours (MobileMark 2014)
- 512GB NVMe OPAL SSD

### Full HD Touchscreen Model:

*All the above, plus:*

- 14" Full-HD Active Matrix, capacitive Touch Screen, 1.000cd/m<sup>2</sup> brightness
- Long battery life of up to 18 hours (MobileMark 2014)
- 512GB NVMe OPAL SSD
- Windows Hello Front Webcam as standard

\* The Windows 11 upgrade will be delivered to qualifying devices late 2021 into 2022. Timing will vary by device. Certain features require specific hardware (see [aka.ms/windows11-spec](https://aka.ms/windows11-spec)).

\*\*Tested by an independent third-party lab following MIL-STD810H

*All technical specifications are subject to change without notice.*



## TOUGHBOOK 55 ACCESSORY ECOSYSTEM



All accessories in this guide are fully tested and certified in the Panasonic factory by Panasonic engineers

## UNIVERSAL BAY OPTIONS

**TOUGHBOOK**  
Universal Bay

### 2<sup>nd</sup> SSD Packs:

Option	SKU
256 GB	FZ-VSD55121U
512 GB	FZ-VSD55151U
1 TB	FZ-VSD551T1U
OPAL 256 GB	FZ-VSD55122U
OPAL 512 GB	FZ-VSD55152U
OPAL 1 TB	FZ-VSD551T2U



### Other Options:

#### DVD Multi Drive

Part No: **FZ-VDM551U**



#### Smart Card Reader

Part No: **FZ-VSC552U**



#### Blu-ray Disc Drive

Part No: **FZ-VBD551U**



*All technical specifications are subject to change without notice.*





FRONT EXPANSION SLOT OPTIONS

Front  
Expansion Slot

Smart Card Reader

Part No: FZ-VSC551U



Contactless Smart Card Reader

(HF-RFID)

Part No: FZ-VNF551U



Finger Print Reader

Part No: **FZ-VFP551U**



Battery Pack

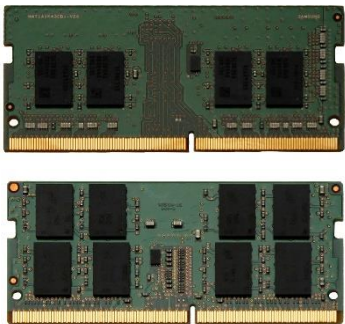
Common for standard battery.

Part No: **FZ-VZSU1HU**



RAM Modules:

Option	SKU
8GB	FZ-BAZ2008
16GB	FZ-BAZ2016
32GB	FZ-BAZ2032



All technical specifications are subject to change without notice.

## REAR EXPANSION SLOT OPTIONS

Rear  
Expansion Slot

VGA + True Serial + USB  
3.1

Part No: FZ-VCN551U



VGA + True Serial +  
Gigabit LAN

Part No: FZ-VCN552U



VGA + True Serial +  
rugged USB 2.0

Part No: FZ-VCN553U



*All technical specifications are subject to change without notice.*



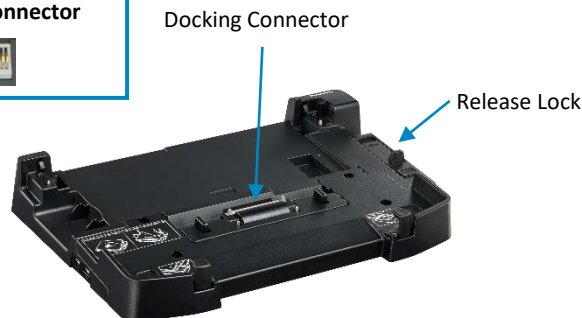
## DOCKING SOLUTIONS

### TOUGHBOOK 55 Desktop Port Replicator

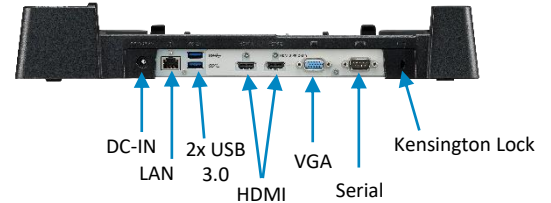
Part No: **FZ-VEB551U**

*CF-VEB541AU is also compatible with the TOUGHBOOK 55.*

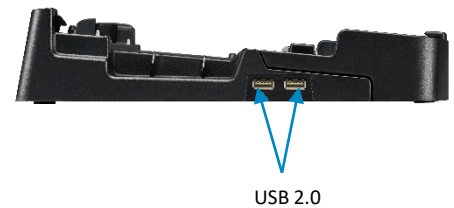
Dust is kept off by  
Self-Cleaning connector



Rear



Left



### TOUGHBOOK 54/55 Vehicle Dock (Gamber-Johnson)

Compatible with TOUGHBOOK 54 and TOUGHBOOK 55.

- Optional antenna pass-through
- Ports: 16V DC-in; 1 x LAN; 2 x USB 3.0; 1 x Serial; 1 x HDMI; 1 x VGA
- VESA 75mm mounting pattern
- Power supply not included

Size: 89 x 342 x 301 mm

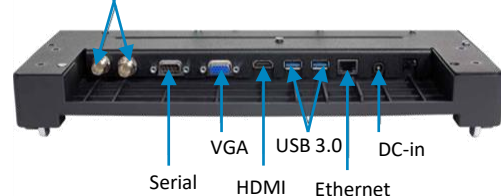
Weight: 2.5 kg

Part Nos:

- **PCPE-GJ54V01** No RF
- **PCPE-GJ54V02** Dual RF



Dual Antenna Pass-Through (TNC)



### TOUGHBOOK 54/55 Vehicle Dock (Gamber-Johnson)

Compatible with TOUGHBOOK 54 and TOUGHBOOK 55.

- Optional antenna pass-through
- Ports: 16V DC-in; 1 x LAN; 2 x USB 3.0; 1 x Serial; **NO HDMI & VGA**
- VESA 75mm mounting pattern
- Power supply not included

Size: 89 x 342 x 301 mm

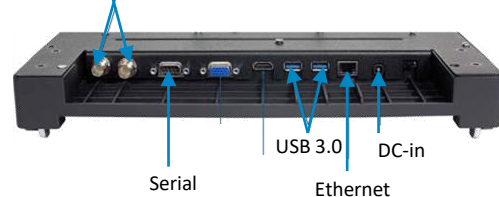
Weight: 2.5 kg

Part Nos:

- **PCPE-GJ54V05** No RF
- **PCPE-GJ54V06** Dual RF



Dual Antenna Pass-Through (TNC)



*All technical specifications are subject to change without notice.*



# PROSERVICES

## DOCKING SOLUTIONS

### TOUGHBOOK 54/55 Vehicle Dock (Havis)

Compatible with TOUGHBOOK 54 and TOUGHBOOK 55.

- Optional antenna pass-through
- Ports: 16V DC-in; 1 x LAN; 1 x VGA; 1 x HDMI; 1 x Serial; 2 x USB 3.0
- VESA 75mm mounting pattern
- Power supply not included
- Keyed alike unless otherwise stated

Size: 384 x 348 x 76 mm  
Weight: 2.45 kg

Part Nos:

- **PCPE-HAV5404** No RF
- **PCPE-HAV5405** Dual RF



### TOUGHBOOK 54/55 Vehicle Dock (Havis)

Compatible with TOUGHBOOK 54 and TOUGHBOOK 55.

- Optional antenna pass-through
- Ports: 16V DC-in; 1 x LAN; 1 x Serial; 2 x USB 3.0; **NO HDMI & VGA**
- VESA 75mm mounting pattern
- Power supply not included
- Keyed alike unless otherwise stated

Size: 384 x 348 x 76 mm  
Weight: 2.45 kg

Part Nos:

- **PCPE-HAV5407** No RF
- **PCPE-HAV5408** Dual RF



*All technical specifications are subject to change without notice.*





## CARRYING SOLUTIONS

### TOUGHBOOK 55 Always-On Case

Part No: **PCPE-INF55AO**



### User Harness

Adjustable four-point harness transforms any Always-On case into a hands-free accessory.

**Attaches to any TOUGHBOOK case that provides 4 attachment points**

Weight: 0.2 kg / 0.4 lb

Part No: **PCPE-INFUVA1**



### Synergy Rucksack

Weight: 1 kg / 2.2 lbs

Size: 254 x 330 x 460 mm

Part No: **PCPE-WENSYN1**



## MOBILE PRINT SOLUTIONS

### PJ7 Series A4 Mobile Printers

Perfectly dimensioned for your briefcase or computer bag, PJ7 series of compact, direct thermal printers can also be easily mounted in your vehicle. Take it out on the road and make sure your clients and customers receive those all-important documents in an instant. Available with 300 dpi print resolution, and with USB, Bluetooth or Wi-Fi.

Part No.: **PCPE-BRPJ763**  
**PCPE-BRPJ773**

PJ763 A4 mobile printer, 300 dpi with USB & Bluetooth  
PJ773 A4 mobile printer, 300 dpi with USB, Wi-Fi and AirPrint



*All technical specifications are subject to change without notice.*



# PROSERVICES

## POWER MANAGEMENT SOLUTIONS

### Main Battery

(6Cell, 68 Wh)

Part No: **FZ-VZSU1HU**



### AC Adaptor

Part No: **CF-AA5713A2\***

\*E: UK; G: EU; T: Italy; D: Switzerland



### 4-bay Battery Charger

Part No: **FZ-VCB551\***

Includes AC adaptor

\*E: UK; G: Continental; T: Italian



### Auto Adaptor (120W)

Part No: **CF-LND1224A**



### MIL SPEC Auto Adaptor (120W)

With bare wire input cable.

Part No: **PCPE-LND3676**



## PRODUCTIVITY SOLUTIONS

### TOUGHBOOK 55 Stylus

For Touchscreen model only.

Part No: **FZ-VNP551U**



### TOUGHBOOK 55 Tether

Part No: **FZ-VNT005U**



### Toughmate Stylus Tether

Part No: **PCPE-INFUVA2**



### USB Optical Mouse

Part No: **PCPE-LOGM901**



*All technical specifications are subject to change without notice.*



**PROSERVICES**

### SECURITY & PROTECTION SOLUTIONS

#### LCD Screen Cleaning Cloth

Part No: **CF-VNC002U**

MOQ: 10 pcs



#### Kensington Lock

Part No: **PCPE-KENLOK1**



### OTHER PERIPHERALS

#### Slimline External CD/DVD Writer

Part No: **PCPE-FCDVR05**



#### Slimline External Blu-Ray Writer

Part No: **PCPE-FCDVR06**



#### Bluetooth Headset

Part No: **PCPE-MODBTH1**



#### Headset Battery Charger – 10 bay

Part No: **PCPE-MOD10BC**



#### Replaceable Batteries

Pack of 25

Part No: **PCPE-MODBAT1**



*All technical specifications are subject to change without notice.*



## PROGLOVE

### Compact Wearable Barcode Scanner Range



#### MARK Display

Part No: Coming Soon

#### MARK 2

mid range

PCPE-PGLSCN2

#### MARK 2

standard range

PCPE-PGLSCN1

#### MARK Basic

PCPE-PGLSCN3

<b>MID RANGE</b> 1ft to 5ft / 30cm to 150cm with crosshair aiming	<b>MID RANGE</b> 1ft to 5ft / 30cm to 150cm with crosshair aiming	<b>STANDARD RANGE</b> 6in to 3ft / 10cm to 80cm	<b>MID RANGE</b> 1ft to 5ft / 30cm to 150cm with crosshair aiming
Scans all 1D/2D barcodes including QR and Data Matrix	Scans all 1D/2D barcodes including QR and Data Matrix	Scans all 1D/2D barcodes including QR and Data Matrix	Scans all 1D/2D barcodes including QR and Data Matrix
<b>BATTERY</b> 6.000 Scans Full charge in 2 hours	<b>BATTERY</b> 10.000 Scans Full charge in 2 hours	<b>BATTERY</b> 10.000 Scans Full charge in 2 hours	<b>BATTERY</b> 5.000 Scans Full charge in 2 hours
<b>DISPLAY</b> 1.54" e-ink screen Optic, acoustic, haptic feedback	Optic, acoustic, haptic feedback	Optic, acoustic, haptic feedback	Optic, acoustic, haptic feedback

### Barcode Scanner 2-Bay Charging Bundle

Part No:

- **PCPE-PGLCHR2** – EU adaptor
- **PCPE-PGLCHR3** – International adaptors



### Index Trigger Wrap

3 pieces per pack

Part Nos:

- **PCPE-PGLITSL** - Left Hand, Size Small
- **PCPE-PGLITML** - Left Hand, Size Medium
- **PCPE-PGLITLL** - Left Hand, Size Large
- **PCPE-PGLITSR** - Right Hand, Size Small
- **PCPE-PGLITMR** - Right Hand, Size Medium
- **PCPE-PGLITLR** - Right Hand, Size Large



All technical specifications are subject to change without notice.



# PROSERVICES

## PROFESSIONAL SERVICES

### Custom BIOS Services

Part No: **PCPE-PSBIOSG**

### Autopilot Enrolment

Part No: **PCPE-PSAUTOP**

### SIM Installation

Part No: **PCPE-PSSIMIN**

### Information Management Bundle

IMEI, MAC, SIM, ASSET, Hardware Hash reporting.

Part No: **PCPE-PSATAGB**

### Solution Packaging

Up to 10 items packaged together in a box.

Does not include custom designed case.

Part No: **PCPE-PSSPACK**

### Custom Imaging

Part Nos:

- **PCPE-PS20GIM** - Image deployment per device (MOQ 30)
- **Custom Image Creation** - Price on request.

### Customer Branding

Logo badge on device casing or bezel.

Part No: **PCPE-PSLOGOB**

### Asset Tagging

Standard, using CPE label set.

Part No: **PCPE-PSATAG1**

### Custom Logistics

Part No: **PCPE-PSCDL01**

Price on Request.

*All technical specifications are subject to change without notice.*



## LIFECYCLE SUPPORT SOLUTIONS

### Extended Warranty

Panasonic's Extended Warranty provides an additional two years of warranty, helping you to minimise repair costs and maximise the life cycle of your Toughbook or TOUGHBOOK.

Part No.: CF-LESPEW\* \*4 / 5

### Accidental Damage Warranty

Panasonic's Accidental Damage Warranty provides protection against any eventuality out in the field for up to 5 years, providing you and your workforce with complete peace of mind.

Part No.: CF-LESPAD\* \*3 / 4 / 5 (4 & 5 year options include Extended Warranty)

### Smart Battery Warranty

Smart Service Lite battery analytics, powered by B2M, monitor device battery health in real-time. Smart Service Lite will notify you when batteries deployed in the field reach a low capacity level so a replacement battery can be sent out in advance.

Part No.: CF-LESPBASS\* \*3 / 4 / 5



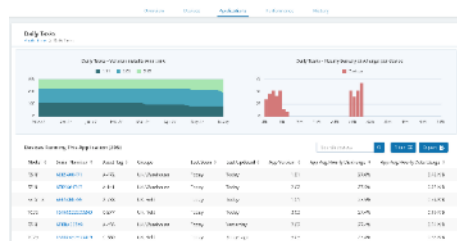
*All technical specifications are subject to change without notice.*

## TOUGHBOOK SMART ESSENTIALS

Get visibility and take control.

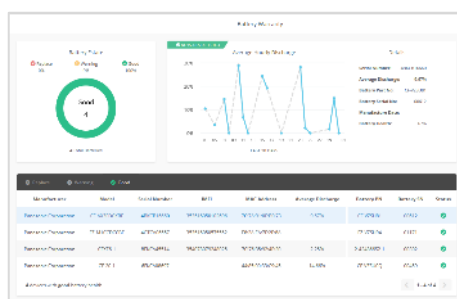


TOUGHBOOK Smart Essentials is a suite of Enterprise Mobility Intelligence tools, providing real-time insight into mobile device and battery health, enabling customers to proactively find and fix enterprise mobility issues.



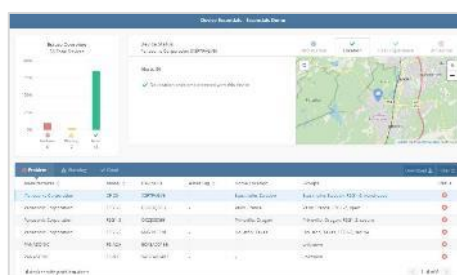
### Smart Service

Real time analytics, powered by B2M Solutions, showing the health and performance of your estate of mobile devices, focussing on areas such as battery life, data usage, disruptions and connectivity. Enables the user to recognise patterns of usage and potentially pre-empt issues before they arise.



### Smart Battery Monitor

An additional “Smart” module that monitors battery usage and health in detail, focusing on battery serial numbers, the software allows the customer to track, identify and replace batteries before they impact productivity. With dashboard access and alerts.



### Smart Device Monitor

An additional “Smart” module that monitors device usage in more detail. Dashboard access provides information such as device location; user experience, including drop detection on Android devices and also enables alerts and geofences to be set up.

TOUGHBOOK Smart Essentials can be purchased as a bundle, including all 3 modules detailed above as well as APIs to be able to pull the data into other business intelligence analysis tools:

- CF-LESPSESS1 1 year Smart Essentials Bundle
- CF-LESPSESS3 3 year Smart Essentials Bundle
- CF-LESPSESS5 5 year Smart Essentials Bundle

Alternatively, Battery Monitor and Device Monitor modules can be bought separately:

- CF-LESPBAEE1 1 year Smart Battery Monitor software licence
- CF-LESPBAEE3 3 year Smart Battery Monitor software licence
- CF-LESPBAEE5 5 year Smart Battery Monitor software licence
- CF-LESPDAEE1 1 year Smart Device Monitor software licence
- CF-LESPDAEE3 3 year Smart Device Monitor software licence
- CF-LESPDAEE5 5 year Smart Device Monitor software licence

All technical specifications are subject to change without notice.

## SOFTWARE SOLUTIONS – PREMIER PARTNERS



### Absolute Data and Device Security

Patented technology to centrally secure TOUGHBOOK devices for unrivalled endpoint security and data risk management.

*Part numbers available upon request.*

Website: <https://www.absolute.com/partners/oem/panasonic/>



### NetMotion Mobility

More than just a VPN, “Mobility” Mobile Performance Management software can dynamically maintain access to applications through changing network conditions, allowing mobile workers to remain productive anywhere their work takes them. Diagnostics option also available.

*Part numbers available upon request.*

Website: <https://www.netmotionsoftware.com/products/mobility>



### SOTI MobiControl

MobiControl is an Enterprise Mobility Management (EMM) solution with enhanced EMM features like application management, content management, location services and remote help.

*Part numbers available upon request.*

Website: <https://www.soti.net/products/soti-mobicontrol/>



### Sygic

Sygic Professional GPS Navigation works offline and features truck specific routing, itinerary with time windows and over 60 APIs for development with Android and Windows based apps.

*Part numbers available upon request.*

Website: <https://www.sygic.com/enterprise/professional-gps-navigation-sdk>

For more info on these software solutions, please refer to the co-branded data sheet [here](#).



## SOFTWARE SOLUTIONS – CERTIFIED PARTNERS



### StayLinked

StayLinked's SmartTE software provides a cost-effective way to take advantage of touchscreen devices with Terminal Emulation by transforming traditional "green screen" application screens into easy-to-use, graphical screens with no changes to the underlying enterprise applications.

For more information or to request a demo, visit:  
<https://www.staylinked.com/panasonic>



### Loqus

Loqus Fleet Ltd specialises in the provision of end-to-end Transport management systems providing organisations with the necessary tools to help them Plan, Execute and Monitor & Control work orders from initial order taking down to the last mile. Headquartered in Malta, the group employs a passionate team of high calibre software engineers supported by an experienced management team

Visit website: <http://openfleet.loqusgroup.com/>



### Acronis

Acronis sets the standard for cyber protection and hybrid cloud storage through its innovative backup, anti-ransomware, disaster recovery, storage, and enterprise file sync and share solutions. Enhanced by its award-winning AI-based active protection technology, blockchain-based authentication and unique hybrid-cloud architecture, Acronis protects all data in any environment – including physical, virtual, cloud, mobile workloads and applications – all at a low and predictable cost.

Visit website: <https://www.acronis.com>



### GPC Systems

GPC is an award-winning software house with over 25 years of experience working with a range of sectors across the globe. Driven by the needs of their customers in healthcare, transportation, police, logistics and local government, GPC strives to improve outcomes through the most efficient use of resources. GPC has in-depth experience creating solutions utilising 3D cameras, including the Intel® RealSense™ technology integrated into the TOUGHBOOK M1.

Visit website: <https://www.gpcsl.com/>

*All technical specifications are subject to change without notice.*



## ACCESSORY SUMMARY

Solution Type	Part Number	Description
Universal Bay Options	FZ-VSD55121U	256 GB 2 <sup>nd</sup> SSD
	FZ-VSD55151U	512 GB 2 <sup>nd</sup> SSD
	FZ-VSD551T1U	1 TB 2 <sup>nd</sup> SSD
	FZ-VSD55122U	OPAL 256 GB 2 <sup>nd</sup> SSD
	FZ-VSD55152U	OPAL 512 GB 2 <sup>nd</sup> SSD
	FZ-VSD551T2U	OPAL 1TB 2 <sup>nd</sup> SSD
	FZ-VDM551U	DVD Multi Drive
	FZ-VBD551U	Blu-ray Disc Drive
	FZ-VSC552U	Smart Card Reader
Front Expansion Slot Options	FZ-VSC551U	Smart Card Reader
	FZ-VNF551U	Contactless Smart Card Reader
	FZ-VFP551U	Finger Print Reader
	FZ-VZSU1HU	Battery Pack
Rear Expansion Slot Options	FZ-VCN551U	VGA x1, Serial x1, USB3.0 x1
	FZ-VCN552U	VGA x1, Serial x1, 2nd Gigabit LAN x1
	FZ-VCN553U	VGA x1, Serial x1, Rugged USB x1(USB2.0)
RAM Modules	FZ-BAZ2008	8GB RAM
	FZ-BAZ2016	16 GB RAM
	FZ-BAZ2032	32GB RAM
Docking Solutions	FZ-VEB551U	TOUGHBOOK 55 Desktop Port Replicator
	PCPE-GJ54V01/2/5/6	TOUGHBOOK 54/55 Vehicle Dock (Gamber-Johnson)
	PCPE-HAV5404/5/7/8	TOUGHBOOK 54/55 Vehicle Dock (Havis)
Bags and Carry Cases	PCPE-INF55AO	TOUGHBOOK 55 Always On Case
	PCPE-INFUVA1	User Harness
	PCPE-WENSYN1	Synergy 15.6" Backpack
Power Management	FZ-VZSU1HU	Replacement Main Battery (6Cell, 68 Wh)
	FZ-VCB551* E/G/T	4-bay Battery Charger
	CF-AA5713A2*	AC Adaptor (*E: UK; G: Continental; T: Italian ; D: Swiss
	CF-LND1224A	Auto Adaptor (120W)
	PCPE-LND3676	MIL SPEC Auto Adaptor (120W)
Productivity	FZ-VNP551U	TOUGHBOOK 55 Touch Screen Stylus Pen
	FZ-VNT005U	Stylus Tether
	PCPE-INFUVA2	Toughmate Stylus tether
	PCPE-LOGM901	USB Optical Mouse
ProGlove Wearable Scanning Solutions	PCPE-PGLSCN3	MARK Basic
	PCPE-PGLSCN1	MARK 2 Standard Range
	PCPE-PGLSCN2	MARK 2 Mid Range
	PCPE-PGLITSR	Index Trigger Wrap - Right Hand Small (3pcs)
	PCPE-PGLITSL	Index Trigger Wrap - Left Hand Small (3pcs)
	PCPE-PGLITMR	Index Trigger Wrap - Right Hand Medium (3pcs)
	PCPE-PGLITML	Index Trigger Wrap - Left Hand Medium (3pcs)
	PCPE-PGLITLR	Index Trigger Wrap - Right Hand Large (3pcs)
	PCPE-PGLITLL	Index Trigger Wrap - Left Hand Large (3pcs)
	PCPE-PGLCHR2	EU Charging Bundle (2 bay)
	PCPE-PGLCHR3	International Charging Bundle (2 bay)

All technical specifications are subject to change without notice.





### ACCESSORY SUMMARY

Solution Type	Part Number	Description
<b>Barcode Scanner Solutions</b>	PCPE-PGLSCN1	Standard Range Barcode Scanner
	PCPE-PGLSCN2	Mid Range Barcode Scanner
	PCPE-PCGCHR3	Barcode Scanner Charging Cradle
	PCPE-PGLIT* SL/ML/LL	Index Trigger Glove – 3 Pcs. Pack (SL: Left Hand Small Size, ML: Left Hand Medium Size, LL: Left Hand Large Size)
	PCPE-PGLIT* SR/MR/LR	Index Trigger Glove – 3 Pcs. Pack (SR: Right Hand Small Size, MR: Right Hand Medium Size, LR: Right Hand Large Size)
<b>Security, Protection &amp; Cleaning</b>	PCPE-KENLOK1	Kensington Lock
	CF-VNC002U	LCD Cleaning Cloth (MOQ: 10pcs)
<b>Peripherals</b>	PCPE-FCDVR05	USB External CD-DVD Drive
	PCPE-FCDVR06	USB External Blu-Ray Drive
	PCPE-MOVBTH1	Bluetooth Headset
	PCPE-MOD10BC	Bluetooth Headset 10 Bay Charger
	PCPE-MOVBAT1	Bluetooth Headset Replaceable Batteries – 25 pack
<b>Mobile Printing Solutions</b>	PCPE-BRPJ763	PJ763 A4 mobile printer, 300 dpi with USB & Bluetooth
	PCPE-BRPJ773	PJ773 A4 mobile printer, 300 dpi with USB, Wi-Fi & AirPrint
<b>Professional Services</b>	PCPE-PSBIOSG	Custom BIOS Service – Gold
	<b>PCPE-PS20GIM</b>	Image deployment per device (MOQ 30)
	PCPE-PSSIMIN	SIM Installation
	PCPE-PSATAG1	Asset Tagging
	PCPE-PSATAGB	Information Management Bundle
	PCPE-PSAUTOP	Autopilot Enrolment
	PCPE-PSLOGOB	Custom logo badge
	PCPE-PSSPACK	Solution Packaging
	PCPE-PSCDL01	Customised Deployment / Logistics
	PCPE-PSBTM01	Bespoke Training Material
<b>Smart Essentials</b>	CF-LESPSESS3/4/5	Smart Essentials Bundle – 3, 4 or 5 years
	CF-LESPBAEE1/3/5	Smart Battery Monitor cloud licence – 1, 3 or 5 years
	CF-LESPDAEE1/3/5	Smart Device Monitor cloud licence – 1, 3 or 5 years
<b>Lifecycle Support Solutions</b>	CF-LESPEW* 4/5	Extended Warranty
	CF-LESPAD* 3/4/5	Accidental Damage Warranty
	CF-LESPBASS* 3/4/5	Smart Battery Warranty

Panasonic and TOUGHBOOK are brand names and registered trademarks of Panasonic Corporation. Intel, the Intel logo, Intel Core, Intel vPro, Core Inside and vPro Inside are trademarks of Intel Corporation in the U.S. and other countries. Microsoft® and Windows® are registered trademarks of Microsoft® Corporation of the United States and/or other countries. All other brand names shown are the registered trademarks of the relevant companies. All rights reserved.

Mobile Solutions Business Division Europe, a division of Panasonic Marketing Europe GmbH Panasonic Marketing Europe GmbH is a company registered in Germany at Hagenauer Strasse 43, 65203 Wiesbaden, Germany. Registered in AG Wiesbaden HRB 13178