

Model ID

SPV-DC

Model No.

NM-EJP9A



- Achieves compact dual lane and highly efficient production.
- Achieves improved overall quality with our integrated line solutions using our proprietary mounters.



*It may not conform to Machinery Directive and EMC Directive in case of optional configuration and custom-made specification.

Model ID	SPV-DC
Model No.	NM-EJP9A
PCB dimensions	L 50 mm × W 50 mm to L 350 mm × W 300 mm
PCB exchange time	13.0 s (6.5 s / PCB) ^{*1} Including transfer , positioning , recognition , each-time cleaning. Printing & cleaning conditions : Our recommended conditions (PCB dimensions L 250 mm × W 165 mm)
Repeatability	2 Cpk ± 5.0 μm 6 σ The repeatability of same PCB Equal to ± 5.0 μm ± 3 σ (or ± 2.5 μm ± 1.5 σ)
Screen frame dimensions ^{*2}	L 736 mm × W 736 mm , L 650 mm × W 550 mm , L 550 mm × W 650 mm L 750 mm × W 750 mm , L 584 mm × W 584 mm
Electric source ^{*3}	1-phase AC 200 , 220 , 230 , 240 V ± 10V Max.4.0 kVA
Pneumatic source ^{*4}	0.5 MPa , 560 L / min (A.N.R.)
Dimensions ^{*5}	W 1 650 mm × D 2 446 mm × H 1 500 mm (maximum protusion D 2 528 mm)
Mass ^{*6}	2 650 kg

Please refer to the specification booklet for details.

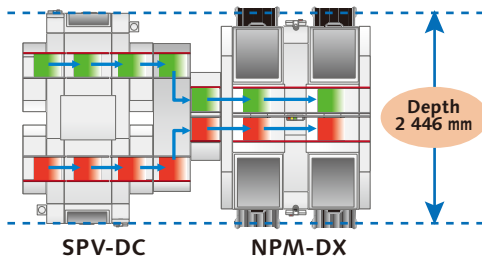
*1 : PCB exchange time varies depending on the machine in the pre-process and the post process, the PCB size, the use of a PCB pressing-down unit and so forth.
*2 : For mask specifications, please see the specification.

*3 : Including blower and vacuum pump " Option "
*4 : When using the mask suction function
*5 : Except for the signal tower and the touch panel.
*6 : With full options

Enables high efficiency dual lane production in a compact package

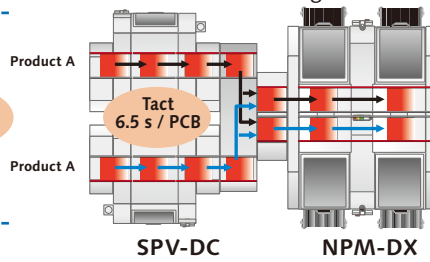
● Compact dual lanes

Enables compact dual lane production with front / rear independence to provide a production line that matches customer production needs.



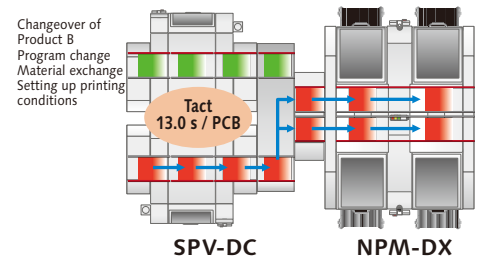
● High-speed production

Printing the same product on the front and rear stages enables the creation of a high-production line. The lane utilization can be enhanced by supplying PC boards from the front and rear stages.



● Nonstop changeover

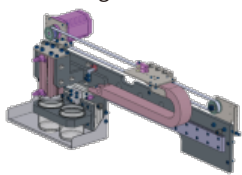
The preparation for the next product can be carried out during one-sided stage production, thereby eliminating the time for changeover.



Provides optimum functions for customer production needs

● Perforated pot type automatic solder supply

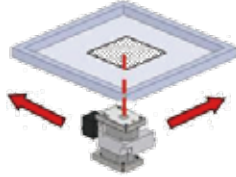
Automation of solder supply allows for labor savings and uninterrupted operation.



Productivity Improvement

● Mask inspection

Inspects for mask aperture clogging and solder bleed.



Print quality Improvement

● Morene Block

Comes in contact with the mask using magnet repulsion to prevent solder side leakage during printing. Simple construction for easy cleaning.



Maintainability Improvement

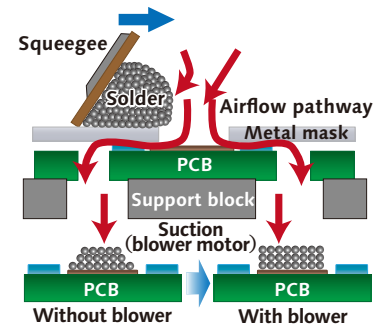
● Solder inspection

Head camera inspects for solder displacement, bridging, streaking, and bleeding.

Print quality Improvement

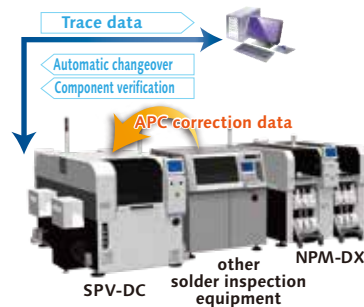
● PCB pickup blower (switch type)

Printing transcription is improved through the use of blower to create airflow pathways from metal mask to PCB.

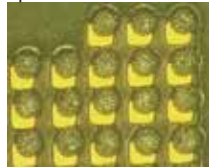


Print quality Improvement

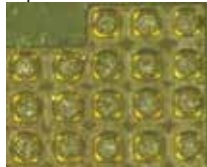
M2M Line solution



Without printing position correction



With printing position correction



0402 part land

According to the correction data of shifted printing positions analyzed by solder paste inspection equipment (APC correction data), it corrects printing positions (X, Y, θ).

*Solder inspection equipment of other companies can also be connected.
* Please inquire with your sales representative for more details.

The following functions can be supported by connecting with a upper system (LNB, LWS...).

- Automatic changeover
- Component verification (solder / mask / squeegee...)
- Trace data output

*About the specification and system configuration, please refer to the specification booklet for details.

⚠ Safety Cautions

- Please read the User's Manual carefully to familiarize yourself with safe and effective usage procedures.
- To ensure safety when using this equipment, all work should be performed according to that as stated in the supplied Operating Instructions. Read your operating instruction manual thoroughly.

Panasonic Group products are built with the environment in mind.

For details here



Panasonic GREEN IMPACT

Inquiries...

Panasonic Connect Co., Ltd.
Process Automation Business Division

3-1-1 Inazu-cho, Toyonaka City, Osaka
561-0854, Japan

All data as of April 1, 2024

Ver. April 1, 2024

© Panasonic Connect Co., Ltd. 2024

- Changes in specifications and appearance may be made without notice for product improvement.
- Please contact us via our website at <https://industrial.panasonic.com/ww/r/fw>