

Model ID

# SPV

Model No.

## NM-EJP7A

**2 in 1 Printing Function**  
Printing both sides of PCB by one machine

**Screen Mask**

2 patterns (front & back) printmaking on 1 mask  
To easily identify the two positions on the mask,  
this picture has been colored Red / Blue by photo processing.



2 in 1 Specification



Dual Specification

- 10 sec for the total printing process including transfer, recognition, each-time cleaning.
- The printing process matching your production style is realized by PCB discrimination function.
- M2M Line solution



\*It may not conform to Machinery Directive and EMC Directive in case of optional configuration and custom-made specification.

Model ID	SPV ( Single Spec )	SPV ( to 2 Spec )	SPV ( 2 in 1 Spec )	SPV ( Dual Spec )
Model No.	NM-EJP7A			
PCB dimensions	L 50 mm × W 50 mm to L 350 mm × W 300 mm ( Max.dimensions of 2 in 1 Spec : L 350 mm × W 165 mm )			
PCB exchange time <sup>*1</sup>	10.0 s* Including transfer, positioning, recognition, each-time cleaning. Printing & cleaning conditions : Our recommended conditions ( PCB dimensions L 250 mm × W 165 mm ) *Except 2 in 1 Spec			
Repeatability	2 Cpk ± 5.0 μm 6 σ The repeatability of same PCB Equal to ± 5.0 μm ± 3 σ ( or ± 2.5 μm ± 1.5 σ )			
Screen frame dimensions	L 736 mm × W 736 mm 、 L 650 mm × W 550 mm 、 L 550 mm × W 650 mm L 750 mm × W 750 mm 、 L 584 mm × W 584 mm <sup>*2</sup>			
PCB discrimination function	Pre-process	Not	Not	Installed
	Post-process	Not	Installed	Installed
Electric source <sup>*3</sup>	1-phase AC 200 , 220 , 230 , 240 V ±10V Max. 2.0 kVA			1-phase AC 200, 220, 230, 240 V ±10V Max.4.0 kVA
Pneumatic source	0.5 MPa			0.5 MPa
Mask cleaning suction : blower spec <sup>*4</sup>	280 L / min ( A.N.R. )			560 L / min ( A.N.R. )
Mask cleaning suction : ejector spec <sup>*4</sup>	380 L / min ( A.N.R. )			760 L / min ( A.N.R. )
Dimensions <sup>*5</sup>	W 1 650 mm × D 1 517 mm × H 1 500 mm			W 1 650 mm × D 3 044 mm × H 1 500 mm
Mass <sup>*6</sup>	1 550 kg			3 100 kg

Please refer to the specification booklet for details.

\*1 : PCB exchange time varies depending on the machine in the pre-process and the post process, the PCB size, the use of a PCB pressing-down unit and so forth.

\*2 : For mask specifications, please see the specification.

\*3 : Including blower and vacuum pump"Option"

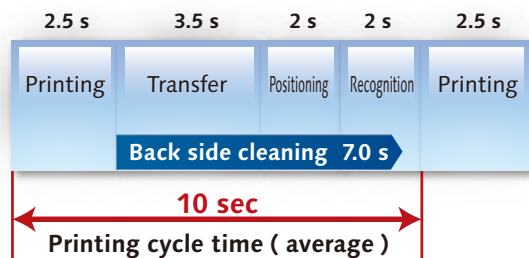
\*4 : When using the mask suction function

\*5 : Except for the signal tower and the touch panel.

\*6 : With full options

## Realizing high-speed printing ( 10sec / PCB ) and stable quality

Realizing the high-speed printing, eliminating a screen printer becomes bottleneck of operation and the stable quality by each-time cleaning.



\*10 sec : Average time of printing + transfer + cleaning

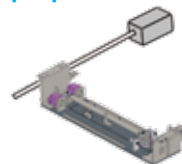
PCB dimensions 250 mm × 165 mm

Printing & cleaning conditions : Our recommended conditions. Except the 2 in 1 printing.

### < Realizing cycle time 10sec / PCB >

- New development : Self-propelled cleaning unit
- 3 Conveyors
- Hybrid squeegee head

### ● Self-propelled cleaning unit



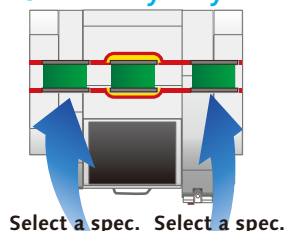
### ● Hybrid squeegee head



## PCB discrimination function

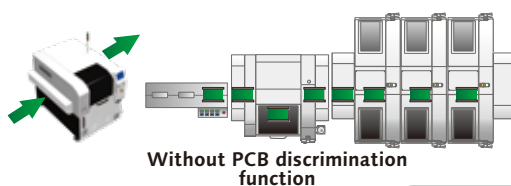
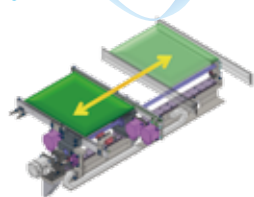
To establish a printing process according to your production style.

### ● 3-conveyor system

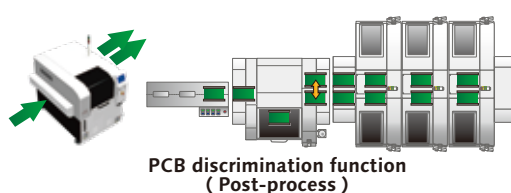


Select a spec. Select a spec.

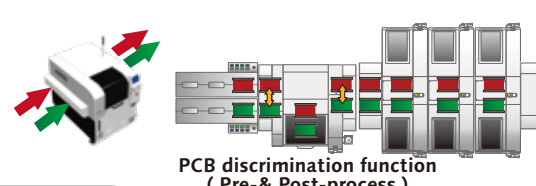
### ● Install PCB discrimination function



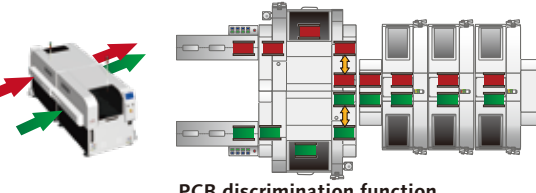
Without PCB discrimination function



PCB discrimination function ( Post-process )



PCB discrimination function ( Pre- & Post-process )

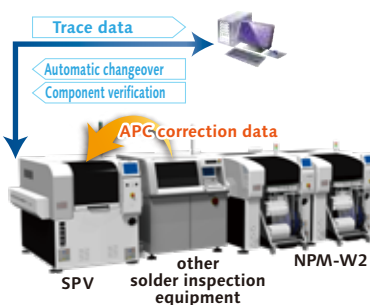


PCB discrimination function ( Post-process )

PCB discrimination function ( Post-process )

Single Spec 2 in 1 Spec  
1 to 2 Spec Dual Spec

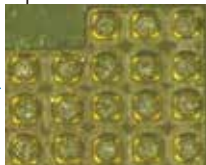
## M2M Line solution



Without printing position correction



With printing position correction



0402 part land

According to the correction data of shifted printing positions analyzed by solder paste inspection equipment ( APC correction data ) , it corrects printing positions ( X, Y,  $\theta$  ) .

\*Solder inspection equipment of other companies can also be connected.

\* Please inquire with your sales representative for more details.

The following functions can be supported by connecting with a upper system ( LNB, LWS... ) .

- Automatic changeover
- Component verification ( solder / mask / squeegee... )
- Trace data output

\*About the specification and system configuration, please refer to the specification booklet for details.

## ⚠ Safety Cautions

- Please read the User's Manual carefully to familiarize yourself with safe and effective usage procedures.
- To ensure safety when using this equipment, all work should be performed according to that as stated in the supplied Operating Instructions. Read your operating instruction manual thoroughly.

Panasonic Group products are built with the environment in mind.

For details here



Panasonic GREEN IMPACT

Inquiries...

Panasonic Connect Co., Ltd.

Circuit Formation Process Business Division

3-1-1 Inazu-cho, Toyonaka City, Osaka  
561-0854, Japan

All data as of January 1, 2025

Ver. January 1, 2025

© Panasonic Connect Co., Ltd. 2025

- Changes in specifications and appearance may be made without notice for product improvement.
- Please contact us via our website at <https://industrial.panasonic.com/ww/r/fw>