





## TOUGHBOOK G2

### EVOLVED 2 ADAPT

The **TOUGHBOOK G2** is the next generation rugged device for mobile workforces. It offers all the benefits of the latest technology, while maintaining important access to legacy systems. All of this, wrapped up in a more flexible, secure and ultimately even more useable device. An evolution of the best-selling Panasonic Toughbook G1 tablet and 20 detachable, this latest tablet is powered by the latest Intel® Core™ Ultra processor, delivering incredible performance, and is shipping with Windows 11 Pro. It also has a rich set of business interfaces with additional customizable options to meet a worker's needs. With its long battery life and outdoor viewing, glove-enabled touchscreen, it's a versatile yet tough technology companion for mobile workers.

- Intel® Core™ Ultra5 135U vPro™ Processor
- Windows 11 Pro
- Intel® Graphics
- Next generation IPSa outdoor display technology
- 10.1" high brightness WUXGA (1920x1200) display (up to 1.000cd/m<sup>2</sup>)
- Capacitive 10 finger multi-touchscreen + digitizer
- 180 cm drop resistant\*
- Water and dust resistant (IP65)\*
- Up to 15 hours battery life with large battery

- User exchangeable battery
- Optional Hot swap function
- Flexible configuration port (Serial, LAN, USB 2.0, Micro-SD or Thermal by FLIR, Barcode Reader)
- Rear expansion area (Smart Card Reader, HF-RFID, Fingerprint)
- Lightweight design - weights approx. 1,19kg

\* Test by an independent third-party lab following MILSTD810H and IP65

*All technical specifications are subject to change without notice.*

## TOUGHBOOK G2 ACCESSORY ECOSYSTEM



All accessories in this guide are fully tested and certified in the Panasonic factory by Panasonic engineers

## PRODUCTIVITY SOLUTIONS

### TOUGHBOOK G2 Emissive IP65 Backlit Keyboard

Ports:

- x1 USB 3.0 Type A
- x1 USB 3.0 Type c

Size: 287 x 240 x 56.1 mm

Weight: 910 g

Part no: **FZ-VEKG21L\***



### TOUGHBOOK G2 Smart Card Reader

(For rear expansion area)

Size: 111 x 75 x 15.4 mm

Weight: 80 g

Part no: **FZ-VSCG211U**



### TOUGHBOOK G2 HF-RFID Reader

(For rear expansion area)

Size: 110 x 75 x 15.0 mm

Weight: 85 g

Part no: **FZ-VRFG211U**



### TOUGHBOOK G2 Fingerprint Reader

(For rear expansion area)

Size: 111 x 75 x 15 mm

Weight: 80 g

Part no: **FZ-VFPG221U**



### TOUGHBOOK G2 IP55 DIGITISER PEN

Size: 117.5mm x Ø9.0

Weight: 6.2 g

Part no: **FZ-VNP026U**



### TOUGHBOOK G2 Pen Holder

Size: 33mm x 25mm x 6.3mm

Weight: 2 g

MOQ: 100 pcs.

Part no: **PCPE-CDSG2SH**



*All technical specifications are subject to change without notice.*

## PRODUCTIVITY SOLUTIONS

### TOUGHBOOK G2 Barcode Reader

(For configuration port)

Part no: FZ-VBRG231U



### TOUGHBOOK G2 Thermal Camera

(For configuration port)

Part no: FZ-VTSG211U



### TOUGHBOOK G2 Gigabit LAN

(For configuration port)

Part no: FZ-VLNG211U



### TOUGHBOOK G2 USB 2.0 Type A

(For configuration port)

Part no: FZ-VUBG211U



### TOUGHBOOK G2 Native Serial

(For configuration port)

Part no: FZ-VSRG211U



### TOUGHBOOK G2 Micro- SD

(For configuration port)

Part no: FZ-WSMG221U



### TOUGHBOOK G2 MIL Adaptor

Ports:

- Fischer MiniMax™ 10-12 (USB 3.0 + Power)
- Size: 205 × 57 × 32 mm
- Weight: 350 g

Part no: PCPE-CDSG2RU



*All technical specifications are subject to change without notice.*

## CARRYING SOLUTIONS

### TOUGHBOOK G2 Rotating Hand Strap

Size: 243 x 127 x 15.5 mm

Weight: 0.135 kg

Part no: **FZ-VSTG21U**



↑  
Kickstand

### Toughmate Rotating Hand Strap

includes a shoulder strap

Size: 199 x 152 x 22 mm

Weight: 0.27 kg

Part no: **PCPE-INFG2H1**



### TOUGHBOOK G2 Always On Case

Size: 325 x 240 x 20 mm

Weight: 0.22 kg

Part no: **PCPE-INFG2AO**



### TOUGHBOOK G2 Elastic X-Strap

Size: 114 x 69 x 65 mm

Weight: 0.27 kg

Part no: **PCPE-INFG2XS**



### TOUGHBOOK G2 Mobility Bundle

Size: 171 x 19 x 3 mm

Weight: 0.07 kg

Part no: **PCPE-INFG2MB**

**Compatible with tablet only**

**Not compatible with  
Gamber Johnson Vehicle  
Dock**



### TOUGHBOOK G2 Mobility Bundle with Deluxe Shoulder Strap

Size: 171 x 19 x 3 mm

Weight: 0.10 kg

Part no: **PCPE-INFG2B1**

**Compatible with tablet only**



### TOUGHBOOK G2 ModuFlex

Size: 241 x 165 x 17 mm

Weight: 0.19 kg

Part no: **PCPE-INFG2MF**



All technical specifications are subject to change without notice.

## CARRYING SOLUTIONS

### User Harness

Can be used with Always On cases and other cases with D-rings on each corner

Weight: 0.2 kg / 0.4 lb

Part No: **PCPE-INFUVA1**



### TOUGHBOOK G2 Shoulder Strap

Include screws

Size: 183cm x 3.8cm

Weight: 0.053 kg

Part no: **FZ-VNSG21U**



### Heavy Duty Shoulder Strap

Size: 183cm x 3.8cm

Weight: 0.10 kg

Part No: **PCPE-INFSS03**



*All technical specifications are subject to change without notice.*

## SECURITY AND PROTECTION SOLUTIONS

### Keyboard Cover

Part No: **PCPE-CERG2C1**



### Kensington Lock

Part No: **PCPE-KENLOK2**



### Protective Film for LCD

Tempered glass for  
Panasonic FZ-G2

Part No: **PCPE-INFG2TG1**



### Privacy Screen for LCD

Privacy screen for Panasonic  
FZ-G2

Part No: **PCPE-INFG2PF1**



### LCD Screen Cleaning Cloth

Part No: **CF-VNC002U**

MOQ: 10 pcs



### Protective Film for LCD

Replacement for protective  
film pre-installed on  
TOUGHBOOK

Part No: **FZ-VPF38U**



*All technical specifications are subject to change without notice.*



## DESKTOP DOCKING SOLUTIONS

### TOUGHBOOK G2 Desktop Cradle

Size: 31.0cm x 23.0cm x 17.2cm

Weight: 1.5kg

Part Nos:

- FZ-VEBG21U      x2 HDMI 2.0 can be used simultaneously.

*Compatible with TOUGHBOOK G2 Tablet*

Power supply CF-AA5713A\* to be purchased separately



### TOUGHBOOK 20 Desktop Port Replicator

With full port replication.

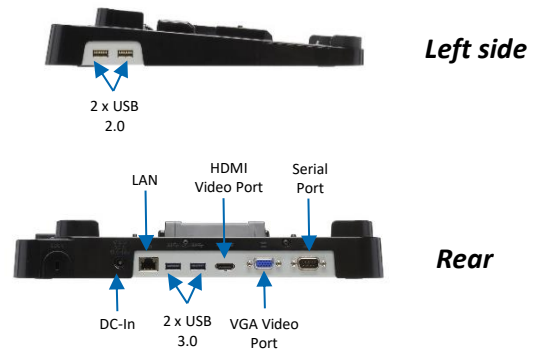
Size: 315mm x 270mm x 50mm

Weight: 1.6 kg

Part No: **CF-VEB201U**

*Compatible with TOUGHBOOK G2 Tablet + Keyboard*

Power supply CF-AA5713A\* to be purchased separately



*All technical specifications are subject to change without notice.*

## TABLET VEHICLE DOCKING SOLUTIONS

### TOUGHBOOK G1/G2 Standard Vehicle Dock (Gamber Johnson)

Ports:

- Serial; VGA; HDMI; 2 x USB 3.0; LAN; 16V DC-in
- Optional dual antenna pass-through
- VESA 75 mounting pattern
- Non-electronic versions available

Size: 285 x 251 x 99 mm

Weight: 0.91 kg

Part Nos (Docks with electronics):

- **PCPE-GJG1V01** Keyed Alike without antenna pass-through
- **PCPE-GJG1V02** Keyed Alike with antenna pass-through

Part Nos (Docks without electronics):

- **PCPE-GJG1V05** Keyed Alike



### TOUGHBOOK G1/G2 Standard Vehicle Dock (Gamber Johnson)

Ports:

- Serial; 2 x USB 3.0; LAN; 16V DC-in, **NO HDMI & VGA**
- Optional dual antenna pass-through
- VESA 75 mounting pattern

Size: 285 x 251 x 99 mm

Weight: 0.91 kg

Part Nos (Docks with electronics):

- **PCPE-GJG1V09** Keyed Alike with antenna pass-through



### TOUGHBOOK G2 Tablet Vehicle Dock (PMT)

Ports:

- Serial; x4 USB 2.0, x2 USB 3.2 ; x2 HDMI ; LAN; 15VDC DC-IN
- Optional dual antenna pass-through
- VESA 75 mounting pattern

Size: 281 x 228 x 96 mm

Weight: 2.09 kg

Part Nos (Docks with electronics):

- **PCPE-PMTG201** without antenna pass-through
- **PCPE-PMTG202** with antenna pass-through
- **PCPE-PMTG203** no electronics



*All technical specifications are subject to change without notice.*

## TABLET VEHICLE DOCKING SOLUTIONS

### TOUGHBOOK G1/G2 Vehicle Dock (Havis)

Ports:

- Serial; VGA; HDMI; 2 x USB 3.0; LAN; 16V DC-in
- Optional dual antenna pass-through
- VESA 75 mounting pattern

Size: 255 x 289 x 11.1 mm / 10.0" x 11.4" x 4.4"

Weight: 1.23 kg / 2.7 lb

Part Nos:

- **PCPE-HAVG103**      Keyed Alike without antenna pass-through
- **PCPE-HAVG104**      Keyed Alike with antenna pass-through



*All technical specifications are subject to change without notice.*

## NOTEBOOK VEHICLE DOCKING SOLUTIONS

### TOUGHBOOK 20/G2 Notebook Dock (Havis)

Full port replication:

- 2 x USB 3.0; 1 x LAN; 1 x Serial; 1 x HDMI; 1 x VGA
- Optional dual antenna pass-through
- 16V DC-in

Size: 635 x 280 x 244 mm

Weight: 1.95 kg

Part No:

- **PCPE-HAV2007** Without pass-through, keyed alike
- **PCPE-HAV2008** With dual pass-through, keyed alike

*Only compatible with TOUGHBOOK G2 when used with keyboard accessory*



---

### TOUGHBOOK 20/G2 Notebook Vehicle Dock (Gamber-Johnson)

Full port replication:

- 2 x USB 3.0; 1 x LAN; 1 x Serial; 1 x HDMI; 1 x VGA
- Optional dual antenna pass-through
- 16V DC-in

Size: 307 x 295 x 65 mm

Weight: 2.3 kg

Part Nos:

- **PCPE-GJ20V07** No RF, keyed alike
- **PCPE-GJ20V08** Dual RF, keyed alike

*Only compatible with TOUGHBOOK G2 when used with keyboard accessory*



*All technical specifications are subject to change without notice.*

## PASSIVE MOUNT SOLUTIONS

### TOUGHBOOK G2 Passive Mount

Size: 306mm x 223mm x 58/78mm

Weight: starting at 479g

Part Nos:

- PCPE-CDSG2P1 TOUGHBOOK G2 to be operated with rotating hand-strap\*
- PCPE-CDSG2P2 TOUGHBOOK G2

\* Compatible with Toughmate hand-strap (PCPE-INFG2H1) only, to be purchased separately



### TOUGHBOOK G2 MIL Adapter Passive Dock

Size: 330mm x 290mm x 91mm

Weight: starting at 2.45kg

Part Nos:

- PCPE-CDSG2M1 VESA 75mm mounting pattern
- PCPE-CDSG2M1 VESA 100mm mounting pattern



*All technical specifications are subject to change without notice.*

## PILLAR MOUNTING KIT FOR TABLETS (VESA)

### Pillar mounting kits

Kit contains:

- 4" pillar clamp with 1.5" ball joint
- 1.5" diameter double socket arm (varying length)
- VESA mounting plate with 1.5" ball

Part No:

|               |  |
|---------------|--|
| PCPE-RAMFRK01 | Pillar mount kit with 1.5" ball, 125mm arm and VESA plate  |
| PCPE-RAMFRK02 | Pillar mount kit with 1.5" ball, 185 mm arm and VESA plate |
| PCPE-RAMFRK03 | Pillar mount kit with 1.5" ball, 270mm arm and VESA plate  |



*For use with vehicle docks. Vehicle dock must be purchased separately*

*All technical specifications are subject to change without notice.*

## POWER MANAGEMENT SOLUTIONS

### Standard 4.360 mAh Battery Pack

Part No: **FZ-VZSU1TU**

*For G2 Standard Model*



### Long-life 6.300 mAh Battery Pack

Part No: **FZ-VZSU1UU**

*For G2 Standard Model*



### Long-life 6.300 mAh Battery Pack

Part No: **FZ-VZSU1VU**

*For G2 Quick Release-SSD Model*



### AC Adaptor

Part No.: **CF-AA5713A2\***  
**E/G/T/D**

\*E: UK; G: Continental; T: Italian;  
D: Swiss



### External 4-bay Battery Charger

Part No: **FZ-VCBG210**

*Does not contain AC Adaptor*



*All technical specifications are subject to change without notice.*

## POWER MANAGEMENT SOLUTIONS

### Car Charger

120 Watt, 12-32Vdc input

120 Watt, 12-32Vdc input

Part No: **CF-LND1224A**



### Car Charger

120 Watt, 12-32Vdc input

Bare Wire

120 Watt, 12-32Vdc input

Part No: **PCPE-LND1224BW**



### Car charger (12 - 16VDC)

EIAJ & TypeA both, 80W Part No: **CF-LND80S -FD/BW\***

\*FD: with vehicle plug; BW: bare wire

*Compatible with vehicle dock only*



### Car Charger

120 Watt, 22-32VDC

MIL-STD

Part No: **PCPE-LND3676**



### Car Charger For Forklifts

Part Nos:

- **PCPE-LNDFH11:** 70-110V
- **PCPE-LNDFH32:** 12-32V
- **PCPE-LNDFH60:** 20-60VDC



### Car charger (12 - 32VDC)

EIAJ & TypeA both, 80W

Part No: **CF-LND8024 FD/BW\***

\*FD: with vehicle plug; BW: bare wire

*Compatible with vehicle dock only*



*All technical specifications are subject to change without notice.*



## CONNECTIVITY

### Cradlepoint IBR 900 Router

Compact, ruggedized Gigabit-Class LTE router for advanced in-vehicle and IoT connectivity.

Dimensions: 118mm x 113.5mm x 30.5mm / 4.6" x 4.5" x 1.2"

Weight: 400g / 0.88 lb

Part Nos:

- **PCPE-CRD90E1** - Cradlepoint IBR900 router with 1-year NetCloud Mobile Essentials Plan
- **PCPE-CRD90E3** - Cradlepoint IBR900 router with 3-year NetCloud Mobile Essentials Plan
- **PCPE-CRD90E5** - Cradlepoint IBR900 router with 5-year NetCloud Mobile Essentials Plan
- **PCPE-CRD90A1** - Cradlepoint IBR900 router with 1-year NetCloud Mobile Advanced Plan
- **PCPE-CRD90A3** - Cradlepoint IBR900 router with 3-year NetCloud Mobile Advanced Plan
- **PCPE-CRD90A5** - Cradlepoint IBR900 router with 5-year NetCloud Mobile Advanced Plan



*All technical specifications are subject to change without notice.*

## PROFESSIONAL SERVICES

### Custom BIOS Services

Part No: **PCPE-PSBIOSG**

### Autopilot Enrolment

Part No: **PCPE-PSAUTOP**

### SIM Installation

Part No: **PCPE-PSSIMIN**

### Information Management Bundle

IMEI, MAC, SIM, ASSET, Hardware Hash reporting.

Part No: **PCPE-PSATAGB**

### Solution Packaging

Up to 10 items packaged together in a box.

Does not include custom designed case.

Part No: **PCPE-PSSPACK**

### Custom Imaging

Part Nos:

- **PCPE-PS20GIM - Image deployment per device (MOQ 30)**
- **Custom Image Creation - Price on request.**

### Customer Branding

Logo badge on device casing or bezel.

Part No: **PCPE-PSLOGOB**

### Asset Tagging

Standard, using CPE label set.

Part No: **PCPE-PSATAG1**

### BIOS Development

Part No.: **PCPE-PSBDEVA**

*All technical specifications are subject to change without notice.*

## PROTECT FULL MAINTENANCE SERVICES



### ProTect PLUS

Every TOUGHBOOK is supported by our standard three year ProTect service, but ProTect PLUS is a value-packed upgrade, offering you extra peace of mind through the additional of the following services:

- Battery Confidence: proactive battery replacement (3 years only)
- Monthly service reporting on full estate of devices
- One working day of on-demand consultancy every year
- Full access to the TOUGHBOOK ServiceCloud Advanced Knowledge Base
- Remote technical support
- Full inspection report for returned devices
- Small, cosmetic repairs and reinstatement of IP integrity

| SKU         | Description  |
|-------------|--|
| PCPE-PROTP3 | TOUGHBOOK ProTect PLUS 3 Years (Incl. 3 yr Battery Confidence) |
| PCPE-PROTP4 | TOUGHBOOK ProTect PLUS 4 Years (Incl. 3 yr Battery Confidence) |
| PCPE-PROTP5 | TOUGHBOOK ProTect PLUS 5 Years (Incl. 3 yr Battery Confidence) |



### ProTect PLUS Premium

For the ultimate protection, tailor your service plan by adding on any of the ProTect PLUS Premium modules below:

- Infinity Maintenance Service – *Infinity pricing all ProTect PLUS services. Other Premium modules below are priced on top of Infinity.*
- Remote Device Monitoring
- Self-Maintenance: Training & Spare Parts Access
- Return without SSD
- Global Service
- Device Management
- Software Maintenance
- Rapid Replacement
- Alternative Packaging

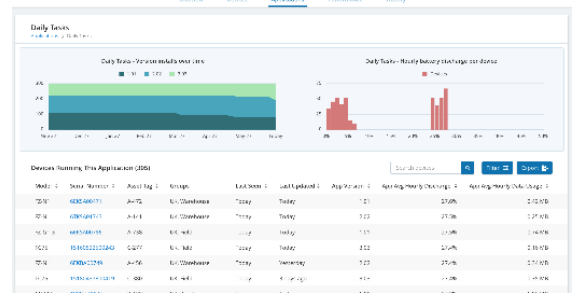
| SKU         | Description  |
|-------------|--|
| PCPE-INFAB3 | TOUGHBOOK Infinity 3 Years (Incl. 3 yr Battery Confidence) |
| PCPE-INFAB4 | TOUGHBOOK Infinity 4 Years (Incl. 3 yr Battery Confidence) |
| PCPE-INFAB5 | TOUGHBOOK Infinity 5 Years (Incl. 3 yr Battery Confidence) |

# ENTERPRISE MOBILITY INTELLIGENCE



## TOUGHBOOK Smart Essentials Suite

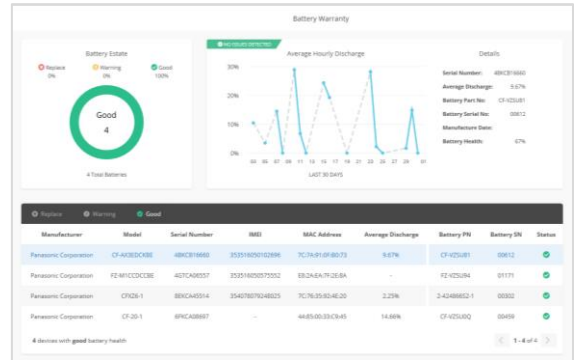
Real time analytics, powered by B2M Solutions, showing the health and performance of your estate of mobile devices, focussing on areas such as battery life, data usage, disruptions and connectivity. Enables the user to recognise patterns of usage and potentially pre-empt issues before they arise. The full suite includes access to the core dashboard as well as the Smart Battery Monitor dashboard, and APIs.



| SKU          | Description  |
|--------------|--|
| CF-LESPSESS1 | Smart Essentials Bundle - 1 year (Smart Service, Battery Monitor and APIs) |
| CF-LESPSESS3 | Smart Essentials Bundle - 3 year (Smart Service, Battery Monitor and APIs) |
| CF-LESPSESS5 | Smart Essentials Bundle - 5 year (Smart Service, Battery Monitor and APIs) |

## Smart Battery Monitor

Smart Battery Monitor gives users real time insight into battery usage and health in detail cross an estate of devices. It focuses on battery serial numbers and allows the user to track, identify and replace batteries before they impact productivity. Alerts can also be set up.



| SKU          | Description   |
|--------------|---|
| CF-LESPBAEE1 | 1 Year Smart Battery Monitor (Elemesz Battery Essentials) |
| CF-LESPBAEE3 | 3 Year Smart Battery Monitor (Elemesz Battery Essentials) |
| CF-LESPBAEE5 | 5 Year Smart Battery Monitor (Elemesz Battery Essentials) |

## SOFTWARE SOLUTION PARTNERS

### **ABSOLUTE**<sup>®</sup>

#### Cyber Resilience

Absolute is the industry benchmark in endpoint resilience. It ensures customers' digital operations and mobile workforces stay efficient, productive, and safe using innovative [Secure Endpoint](#) and [Secure Access](#) products—leveraging the advantage of pioneering Absolute Persistence<sup>®</sup> technology embedded in the firmware of more than 600,000,000 devices. Once activated, Absolute Persistence is fiercely and uniquely resilient, surviving attempts to disable it, even if the device is re-imaged, the hard drive is replaced, or the firmware is updated. **No other technology can do this.**

Contact your sales rep for part numbers.

Website: <https://www.absolute.com/partners/device-compatibility/#panasonic>

### **SOTI**<sup>®</sup>

#### Enterprise Mobility Management

Part of the [SOTI ONE Platform](#), SOTI MobiControl is the Enterprise Mobility Management (EMM) solution designed for any device, any form factor, and any operating system (OS). Deploy apps to smartphones. Enroll and provision new tablets in the field. Track the location of rugged devices. Identify and neutralize security risks to the IoT endpoints. Protect critical data stored on mobile devices. Minimize device downtime so field workers stay productive.

Contact your sales rep for part numbers.

Website: <https://www.soti.net/products/soti-mobicontrol/>



#### Sygic

Sygic Professional GPS Navigation works offline and features truck specific routing, itinerary with time windows and over 60 APIs for development with Android and Windows based apps. Sygic technology is accessible through a complete set of SDKs for web and mobile development. During Sygic's 18-year experience, we developed countless mapping and navigation solutions for 3000+ integration partners and customers in various industries.

Contact your sales rep for part numbers.

Website: <https://www.sygic.com/enterprise/professional-gps-navigation-sdk>



## ACCESSORY SUMMARY 1

| Solution Type             | Part Number  | Description  |
|---------------------------|--|--|
| Power Management          | FZ-VZSU1TU   | Standard 5.000 mAh Battery for Standard Model                                  |
|                           | FZ-VZSU1UU   | Long-Life 6.800 mAh Battery for Standard Model                                 |
|                           | FZ-VZSU1VU   | Long Life 6.800 mAh Battery for Quick Release SSD Model                        |
|                           | FZ-VCBG210   | 4-Bay Battery Charger  |
|                           | CF-AA5713A2*   | AC Adaptor   |
|                           | CF-LND1224A  | Car charger 120W (12 - 32VDC)  |
|                           | PCPE-LND1224BW   | Car charger 120W (12 - 32VDC), Bare Wire                                       |
|                           | CF-LND3676   | Car charger 120W (22 - 32VDC), MIL-STD   |
|                           | CF-LND80S-FD/BW  | Car Charger (12-16VDC)   |
|                           | CF-LND8024FD/BW  | Car Charger (12-32VDC)   |
|                           | PCPE-LNDFH11   | Car Charger for Forklifts (70-110V)  |
|                           | PCPE-LNDFH32   | Car Charger for Forklifts (12-32V)   |
|                           | PCPE-LNDFH60   | Car Charger for Forklifts (20-60VDC)   |
| Keyboard                  | FZ-VEKG21L*  | Emissive IP65 Backlit Keyboard   |
| Styluses                  | FZ-VNTG11U   | Stylus Tether  |
|                           | FZ-VNPO26U   | IP55 Digitiser Pen   |
|                           | PCPE-CDSG2SH   | Pen Holder   |
| Productivity Solutions    | FZ-VSCG211U  | Smart Card Reader  |
|                           | FZ-VRFG211U  | HR-RFID Reader   |
|                           | FZ-VFPG221U  | Fingerprint Reader   |
|                           | FZ-VBRG231U  | Barcode Reader   |
|                           | FZ-VTSG211U  | Thermal Camera   |
|                           | FZ-VLNG211U  | Gigabit LAN Port   |
|                           | FZ-VUBG211U  | USB 2.0 Type A Port  |
|                           | FZ-VSRG211U  | Native Serial Port   |
|                           | FZ-WSMG221U  | Micro SDXC Port  |
|                           | PCPE-CDSG2RU   | TOUGHBOOK G2 MIL Adaptor   |
| Protection & Security     | PCPE-KENLOK2   | Kensington Lock  |
|                           | PCPE-INFG2TG1  | Tempered Glass   |
|                           | PCPE-INFG2PF1  | Privacy Screen   |
|                           | FZ-VPF38U  | LCD Protective Film  |
|                           | CF-VNC002U   | LCD Screen Cleaning Cloth  |
|                           | PCPE-CERG2C1   | Keyboard Cover   |
| Carrying Solutions        | FZ-VSTG21U   | Rotating Hand Strap  |
|                           | FZ-VNSG21U   | Shoulder Strap including screws  |
|                           | PCPE-INFSS03   | Heavy Duty Shoulder Strap  |
|                           | PCPE-INFG2H1   | Rotating Hand Strap (Toughmate)  |
|                           | PCPE-INFG2AO   | Always On Case (Toughmate)   |
|                           | PCPE-INFG2XS   | Elastic X-Strap (Toughmate)  |
|                           | PCPE-INFG2MF   | ModuFlex (Toughmate)   |
|                           | PCPE-INFUVA1   | User Harness (Toughmate)   |
|                           | PCPE-INFG2MB   | Mobility Bundle (Toughmate)  |
| PCPE-INFG2B1              | Mobility Bundle (Toughmate) with Deluxe Shoulder Strap |  |
| Desktop Docking Solutions | FZ-VEBG21U   | TOUGHBOOK G2 Desktop Cradle  |
|                           | CF-VEB201U   | TOUGHBOOK 20 Desktop Port Replicator (compatible with TOUGHBOOK G2 + Keyboard) |

## ACCESSORY SUMMARY 2

| Solution Type             | Part Number                   | Description  |
|---------------------------|-------------------------------|--|
| Vehicle Docking Solutions | PCPE-GJG1V*<br>01/02/05/08/09 | TOUGHBOOK G1/G2 Tablet Vehicle Dock (Gamber Johnson)   |
|                           | PCPE-HAVG1* 03/04             | TOUGHBOOK G1/G2 Tablet Vehicle Dock (Havis)  |
|                           | PCPE-PMTG2*01/02/03           | TOUGHBOOK G2 Vehicle Dock (PMT)  |
|                           | PCPE-GJ20V* 07/08             | TOUGHBOOK 20 Vehicle Dock Gamber Johnson<br>(compatible with TOUGHBOOK G2 + Keyboard)            |
|                           | PCPE-HAV20* 07/08             | TOUGHBOOK 20 Vehicle Dock Havis<br>(compatible with TOUGHBOOK G2 + Keyboard)                     |
| Passive Mount Solutions   | PCPE-CDSG2P1                  | TOUGHBOOK G2 Passive Mount to be operated with TOUGHMATE hand strap (to be purchases separately) |
|                           | PCPE-CDSG2P2                  | TOUGHBOOK G2 Passive Mount   |
|                           | PCPE-CDSG2M1/2                | TOUGHBOOK G2 MIL Adapter Passive Dock  |
| Pillar mounting kits      | PCPE-RAMFRK01                 | Pillar mount kit with 1.5" ball, 125mm arm and VESA plate  |
|                           | PCPE-RAMFRK02                 | Pillar mount kit with 1.5" ball, 185 mm arm and VESA plate                                       |
|                           | PCPE-RAMFRK03                 | Pillar mount kit with 1.5" ball, 270mm arm and VESA plate  |
| Connectivity              | PCPE-CRD90E1                  | Cradlepoint IBR900 router with 1-year NetCloud Mobile Essentials                                 |
|                           | PCPE-CRD90E3                  | Cradlepoint IBR900 router with 3-year NetCloud Mobile Essentials                                 |
|                           | PCPE-CRD90E5                  | Cradlepoint IBR900 router with 5-year NetCloud Mobile Essentials                                 |
|                           | PCPE-CRD90A1                  | Cradlepoint IBR900 router with 1-year NetCloud Mobile Advanced                                   |
|                           | PCPE-CRD90A3                  | Cradlepoint IBR900 router with 3-year NetCloud Mobile Advanced                                   |
|                           | PCPE-CRD90A5                  | Cradlepoint IBR900 router with 5-year NetCloud Mobile Advanced                                   |

*All technical specifications are subject to change without notice.*

## ACCESSORY SUMMARY 3

| Solution Type                      | Part Number  | Description  |
|------------------------------------|--------------|--|
| <b>Professional Services</b>       | PCPE-PSBIOSG | Custom BIOS Service – Gold   |
|                                    | PCPE-PSBDEVA | BIOS Development   |
|                                    | PCPE-PS20GIM | Image deployment per device (MOQ 30)                                       |
|                                    | PCPE-PSSIMIN | SIM Installation   |
|                                    | PCPE-PSATAG1 | Asset Tagging  |
|                                    | PCPE-PSATAGB | Information Management Bundle  |
|                                    | PCPE-PSAUTOP | Autopilot Enrolment  |
|                                    | PCPE-PSLOGOB | Custom logo badge  |
|                                    | PCPE-PSSPACK | Solution Packaging   |
|                                    | PCPE-PSBTM01 | Bespoke Training Material  |
| <b>Smart Services</b>              | CF-LESPSESS1 | Smart Essentials Bundle - 1 year (Smart Service, Battery Monitor and APIs) |
|                                    | CF-LESPSESS3 | Smart Essentials Bundle - 3 year (Smart Service, Battery Monitor and APIs) |
|                                    | CF-LESPSESS5 | Smart Essentials Bundle - 5 year (Smart Service, Battery Monitor and APIs) |
|                                    | CF-LESPBAEE1 | 1 Year Smart Battery Monitor (Elemez Battery Essentials)                   |
|                                    | CF-LESPBAEE3 | 3 Year Smart Battery Monitor (Elemez Battery Essentials)                   |
|                                    | CF-LESPBAEE5 | 5 Year Smart Battery Monitor (Elemez Battery Essentials)                   |
| <b>Lifecycle support solutions</b> | PCPE-PROTP3  | TOUGHBOOK ProTect PLUS 3 Years (Incl. 3 yr Battery Confidence)             |
|                                    | PCPE-PROTP4  | TOUGHBOOK ProTect PLUS 4 Years (Incl. 3 yr Battery Confidence)             |
|                                    | PCPE-PROTP5  | TOUGHBOOK ProTect PLUS 5 Years (Incl. 3 yr Battery Confidence)             |
|                                    | PCPE-INFAB3  | TOUGHBOOK Infinity 3 Years (Incl. 3 yr Battery Confidence)                 |
|                                    | PCPE-INFAB4  | TOUGHBOOK Infinity 4 Years (Incl. 3 yr Battery Confidence)                 |
|                                    | PCPE-INFAB5  | TOUGHBOOK Infinity 5 Years (Incl. 3 yr Battery Confidence)                 |

Panasonic and Toughbook are brand names and registered trademarks of Panasonic Corporation. Intel, the Intel logo, Intel Core, Intel vPro, Core Inside and vPro Inside are trademarks of Intel Corporation in the U.S. and other countries. Microsoft® and Windows® are registered trademarks of Microsoft® Corporation of the United States and/or other countries. All rights reserved. All other brand names shown are the registered trademarks of the relevant companies.