





# TOUGHBOOK G2

## EVOLVED 2 ADAPT

The **TOUGHBOOK G2** is the next generation rugged device for mobile workforces. It offers all the benefits of the latest technology, while maintaining important access to legacy systems. All of this, wrapped up in a more flexible, secure and ultimately even more useable device. An evolution of the best-selling Panasonic Toughbook G1 tablet and 20 detachable, this latest tablet is powered by the latest Intel® Core™ Ultra processor, delivering incredible performance, and is shipping with Windows 11 Pro. It also has a rich set of business interfaces with additional customizable options to meet a worker's needs. With its long battery life and outdoor viewing, glove-enabled touchscreen, it's a versatile yet tough technology companion for mobile workers.

- Intel® Core™ Ultra5 135U vPro™ Processor
- Windows 11 Pro
- Intel® Graphics
- Next generation IPSa outdoor display technology
- 10.1" high brightness WUXGA (1920x1200) display (up to 1.000cd/m<sup>2</sup>)
- Capacitive 10 finger multi-touchscreen + digitizer
- 180 cm drop resistant\*
- Water and dust resistant (IP65)\*
- Up to 15 hours battery life with large battery

- User exchangeable battery
- Optional Hot swap function
- Flexible configuration port (Serial, LAN, USB 2.0, Micro-SD or Thermal by FLIR, Barcode Reader)
- Rear expansion area (Smart Card Reader, HF-RFID, Fingerprint)
- Lightweight design - weights approx. 1,19kg

\* Test by an independent third-party lab following MILSTD810H and IP65

*All technical specifications are subject to change without notice.*

## TOUGHBOOK G2 ACCESSORY ECOSYSTEM



All accessories in this guide are fully tested and certified in the Panasonic factory by Panasonic engineers



## PRODUCTIVITY SOLUTIONS

### TOUGHBOOK G2 Emissive IP65 Backlit Keyboard

Ports:

- x1 USB 3.0 Type A
- x1 USB 3.0 Type c

Size: 287 x 240 x 56.1 mm

Weight: 910 g

Part no: **FZ-VEKG21L\***



### TOUGHBOOK G2 Smart Card Reader

(For rear expansion area)

Size: 111 x 75 x 15.4 mm

Weight: 80 g

Part no: **FZ-VSCG211U**



### TOUGHBOOK G2 HF-RFID Reader

(For rear expansion area)

Size: 110 x 75 x 15.0 mm

Weight: 85 g

Part no: **FZ-VRFG211U**



### TOUGHBOOK G2 Fingerprint Reader

(For rear expansion area)

Size: 111 x 75 x 15 mm

Weight: 80 g

Part no: **FZ-VFPG221U**



### TOUGHBOOK G2 IP55 DIGITISER PEN

Size: 117.5mm x Ø9.0

Weight: 6.2 g

Part no: **FZ-VNP026U**



### TOUGHBOOK G2 Pen Holder

Size: 33mm x 25mm x 6.3mm

Weight: 2 g

MOQ: 100 pcs.

Part no: **PCPE-CDSG2SH**



*All technical specifications are subject to change without notice.*

## PRODUCTIVITY SOLUTIONS

### TOUGHBOOK G2 Barcode Reader

(For configuration port)

Part no: FZ-VBRG231U



### TOUGHBOOK G2 Thermal Camera

(For configuration port)

Part no: FZ-VTSG211U



### TOUGHBOOK G2 Gigabit LAN

(For configuration port)

Part no: FZ-VLNG211U



### TOUGHBOOK G2 USB 2.0 Type A

(For configuration port)

Part no: FZ-VUBG211U



### TOUGHBOOK G2 Native Serial

(For configuration port)

Part no: FZ-VSRG211U



### TOUGHBOOK G2 Micro- SD

(For configuration port)

Part no: FZ-WSMG221U



*All technical specifications are subject to change without notice.*

## CARRYING SOLUTIONS

### TOUGHBOOK G2 Rotating Hand Strap

Size: 243 x 127 x 15.5 mm

Weight: 0.135 kg

Part no: **FZ-VSTG21U**



↑  
Kickstand

### Toughmate Rotating Hand Strap

includes a shoulder strap

Size: 199 x 152 x 22 mm

Weight: 0.27 kg

Part no: **PCPE-INFG2H1**



### TOUGHBOOK G2 Always On Case

Size: 325 x 240 x 20 mm

Weight: 0.22 kg

Part no: **PCPE-INFG2AO**



### TOUGHBOOK G2 Elastic X-Strap

Size: 114 x 69 x 65 mm

Weight: 0.27 kg

Part no: **PCPE-INFG2XS**



### TOUGHBOOK G2 Mobility Bundle

Size: 171 x 19 x 3 mm

Weight: 0.07 kg

Part no: **PCPE-INFG2MB**

**Compatible with tablet only**

**Not compatible with  
Gamber Johnson Vehicle  
Dock**



### TOUGHBOOK G2 Mobility Bundle with Deluxe Shoulder Strap

Size: 171 x 19 x 3 mm

Weight: 0.10 kg

Part no: **PCPE-INFG2B1**

**Compatible with tablet only**



### TOUGHBOOK G2 ModuFlex

Size: 241 x 165 x 17 mm

Weight: 0.19 kg

Part no: **PCPE-INFG2MF**



*All technical specifications are subject to change without notice.*

## CARRYING SOLUTIONS

### User Harness

Can be used with Always On cases and other cases with D-rings on each corner

Weight: 0.2 kg / 0.4 lb

Part No: **PCPE-INFUVA1**



### TOUGHBOOK G2 Shoulder Strap

Include screws

Size: 183cm x 3.8cm

Weight: 0.053 kg

Part no: **FZ-VNSG21U**



### Heavy Duty Shoulder Strap

Size: 183cm x 3.8cm

Weight: 0.10 kg

Part No: **PCPE-INFSS03**



*All technical specifications are subject to change without notice.*

## SECURITY AND PROTECTION SOLUTIONS

### Keyboard Cover

Part No: **PCPE-CERG2C1**



### Kensington Lock

Part No: **PCPE-KENLOK2**



### Protective Film for LCD

Tempered glass for  
Panasonic FZ-G2

Part No: **PCPE-INFG2TG1**



### Privacy Screen for LCD

Privacy screen for Panasonic  
FZ-G2

Part No: **PCPE-INFG2PF1**



### LCD Screen Cleaning Cloth

Part No: **CF-VNC002U**

MOQ: 10 pcs



### Protective Film for LCD

Replacement for protective  
film pre-installed on  
TOUGHBOOK

Part No: **FZ-VPF38U**



*All technical specifications are subject to change without notice.*



## DESKTOP DOCKING SOLUTIONS

### TOUGHBOOK G2 Desktop Cradle

Size: 31.0cm x 23.0cm x 17.2cm

Weight: 1.5kg

Part Nos:

- FZ-VEBG21U      x2 HDMI 2.0 can be used simultaneously.

*Compatible with TOUGHBOOK G2 Tablet*

Power supply CF-AA5713A\* to be purchased separately



### TOUGHBOOK 20 Desktop Port Replicator

With full port replication.

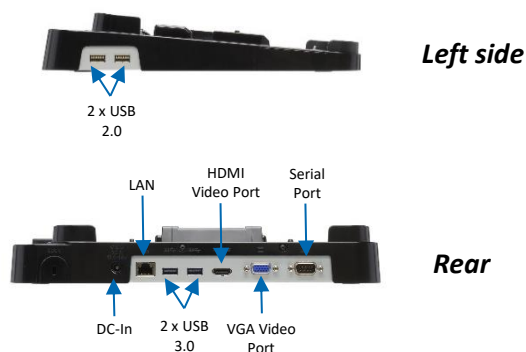
Size: 315mm x 270mm x 50mm

Weight: 1.6 kg

Part No: **CF-VEB201U**

*Compatible with TOUGHBOOK G2 Tablet + Keyboard*

Power supply CF-AA5713A\* to be purchased separately



*All technical specifications are subject to change without notice.*

## TABLET VEHICLE DOCKING SOLUTIONS

### TOUGHBOOK G1/G2 Standard Vehicle Dock (Gamber Johnson)

Ports:

- Serial; VGA; HDMI; 2 x USB 3.0; LAN; 16V DC-in
- Optional dual antenna pass-through
- VESA 75 mounting pattern
- Non-electronic versions available

Size: 285 x 251 x 99 mm

Weight: 0.91 kg

Part Nos (Docks with electronics):

- **PCPE-GJG1V01** Keyed Alike without antenna pass-through
- **PCPE-GJG1V02** Keyed Alike with antenna pass-through

Part Nos (Docks without electronics):

- **PCPE-GJG1V05** Keyed Alike



### TOUGHBOOK G1/G2 Standard Vehicle Dock (Gamber Johnson)

Ports:

- Serial; 2 x USB 3.0; LAN; 16V DC-in, **NO HDMI & VGA**
- Optional dual antenna pass-through
- VESA 75 mounting pattern

Size: 285 x 251 x 99 mm

Weight: 0.91 kg

Part Nos (Docks with electronics):

- **PCPE-GJG1V09** Keyed Alike with antenna pass-through



### TOUGHBOOK G2 Tablet Vehicle Dock (PMT)

Ports:

- Serial; x4 USB 2.0, x2 USB 3.2 ; x2 HDMI ; LAN; 15VDC DC-IN
- Optional dual antenna pass-through
- VESA 75 mounting pattern

Size: 281 x 228 x 96 mm

Weight: 2.09 kg

Part Nos (Docks with electronics):

- **PCPE-PMTG201** without antenna pass-through
- **PCPE-PMTG202** with antenna pass-through
- **PCPE-PMTG203** no electronics



*All technical specifications are subject to change without notice.*

## TABLET VEHICLE DOCKING SOLUTIONS

### TOUGHBOOK G1/G2 Vehicle Dock (Havis)

Ports:

- Serial; VGA; HDMI; 2 x USB 3.0; LAN; 16V DC-in
- Optional dual antenna pass-through
- VESA 75 mounting pattern

Size: 255 x 289 x 11.1 mm / 10.0" x 11.4" x 4.4"

Weight: 1.23 kg / 2.7 lb

Part Nos:

- **PCPE-HAVG103**      Keyed Alike without antenna pass-through
- **PCPE-HAVG104**      Keyed Alike with antenna pass-through



*All technical specifications are subject to change without notice.*

## NOTEBOOK VEHICLE DOCKING SOLUTIONS

### TOUGHBOOK 20/G2 Notebook Dock (Havis)

Full port replication:

- 2 x USB 3.0; 1 x LAN; 1 x Serial; 1 x HDMI; 1 x VGA
- Optional dual antenna pass-through
- 16V DC-in

Size: 635 x 280 x 244 mm

Weight: 1.95 kg

Part No:

- **PCPE-HAV2007** Without pass-through, keyed alike
- **PCPE-HAV2008** With dual pass-through, keyed alike

*Only compatible with TOUGHBOOK G2 when used with keyboard accessory*



---

### TOUGHBOOK 20/G2 Notebook Vehicle Dock (Gamber-Johnson)

Full port replication:

- 2 x USB 3.0; 1 x LAN; 1 x Serial; 1 x HDMI; 1 x VGA
- Optional dual antenna pass-through
- 16V DC-in

Size: 307 x 295 x 65 mm

Weight: 2.3 kg

Part Nos:

- **PCPE-GJ20V07** No RF, keyed alike
- **PCPE-GJ20V08** Dual RF, keyed alike

*Only compatible with TOUGHBOOK G2 when used with keyboard accessory*



*All technical specifications are subject to change without notice.*

## PASSIVE MOUNT SOLUTIONS

### TOUGHBOOK G2 Passive Mount

Size: 306mm x 223mm x 58/78mm

Weight: starting at 479g

Part Nos:

- PCPE-CDSG2P1 TOUGHBOOK G2 to be operated with rotating hand-strap\*
- PCPE-CDSG2P2 TOUGHBOOK G2

\* Compatible with Toughmate hand-strap (PCPE-INFG2H1) only, to be purchased separately



*All technical specifications are subject to change without notice.*



## PILLAR MOUNTING KIT FOR TABLETS (VESA)

### Pillar mounting kits

Kit contains:

- 4" pillar clamp with 1.5" ball joint
- 1.5" diameter double socket arm (varying length)
- VESA mounting plate with 1.5" ball

Part No:

PCPE-RAMFRK01	Pillar mount kit with 1.5" ball, 125mm arm and VESA plate
PCPE-RAMFRK02	Pillar mount kit with 1.5" ball, 185 mm arm and VESA plate
PCPE-RAMFRK03	Pillar mount kit with 1.5" ball, 270mm arm and VESA plate



*For use with vehicle docks. Vehicle dock must be purchased separately*

*All technical specifications are subject to change without notice.*

## POWER MANAGEMENT SOLUTIONS

### Standard 4.360 mAh Battery Pack

Part No: **FZ-VZSU1TU**

*For G2 Standard Model*



### Long-life 6.300 mAh Battery Pack

Part No: **FZ-VZSU1UU**

*For G2 Standard Model*



### Long-life 6.300 mAh Battery Pack

Part No: **FZ-VZSU1VU**

*For G2 Quick Release-SSD Model*



### AC Adaptor

Part No.: **CF-AA5713A2\***  
**E/G/T/D**

\*E: UK; G: Continental; T: Italian;  
D: Swiss



### External 4-bay Battery Charger

Part No: **FZ-VCBG210**

**Does not contain AC Adaptor**



*All technical specifications are subject to change without notice.*

## POWER MANAGEMENT SOLUTIONS

### Car Charger

120 Watt, 12-32Vdc input

120 Watt, 12-32Vdc input

Part No: **CF-LND1224A**



### Car Charger

120 Watt, 12-32Vdc input

Bare Wire

120 Watt, 12-32Vdc input

Part No: **PCPE-LND1224BW**



### Car charger (12 - 16VDC)

EIAJ & TypeA both, 80W Part No: **CF-LND80S -FD/BW\***

\*FD: with vehicle plug; BW: bare wire

*Compatible with vehicle dock only*



### Car Charger

120 Watt, 22-32VDC

MIL-STD

Part No: **PCPE-LND3676**



### Car Charger For Forklifts

Part Nos:

- **PCPE-LNDFH11:** 70-110V
- **PCPE-LNDFH32:** 12-32V
- **PCPE-LNDFH60:** 20-60VDC



### Car charger (12 - 32VDC)

EIAJ & TypeA both, 80W

Part No: **CF-LND8024 FD/BW\***

\*FD: with vehicle plug; BW: bare wire

*Compatible with vehicle dock only*



*All technical specifications are subject to change without notice.*

## CONNECTIVITY

### Cradlepoint IBR 900 Router

Compact, ruggedized Gigabit-Class LTE router for advanced in-vehicle and IoT connectivity.

Dimensions: 118mm x 113.5mm x 30.5mm / 4.6" x 4.5" x 1.2"

Weight: 400g / 0.88 lb

Part Nos:

- **PCPE-CRD90E1** - Cradlepoint IBR900 router with 1-year NetCloud Mobile Essentials Plan
- **PCPE-CRD90E3** - Cradlepoint IBR900 router with 3-year NetCloud Mobile Essentials Plan
- **PCPE-CRD90E5** - Cradlepoint IBR900 router with 5-year NetCloud Mobile Essentials Plan
- **PCPE-CRD90A1** - Cradlepoint IBR900 router with 1-year NetCloud Mobile Advanced Plan
- **PCPE-CRD90A3** - Cradlepoint IBR900 router with 3-year NetCloud Mobile Advanced Plan
- **PCPE-CRD90A5** - Cradlepoint IBR900 router with 5-year NetCloud Mobile Advanced Plan



*All technical specifications are subject to change without notice.*

## PROFESSIONAL SERVICES

### Custom BIOS Services

Part No: **PCPE-PSBIOSG**

### Autopilot Enrolment

Part No: **PCPE-PSAUTOP**

### SIM Installation

Part No: **PCPE-PSSIMIN**

### Information Management Bundle

IMEI, MAC, SIM, ASSET, Hardware Hash reporting.

Part No: **PCPE-PSATAGB**

### Solution Packaging

Up to 10 items packaged together in a box.

Does not include custom designed case.

Part No: **PCPE-PSSPACK**

### Custom Imaging

Part Nos:

- **PCPE-PS20GIM** - Image deployment per device (MOQ 30)
- **Custom Image Creation** - Price on request.

### Customer Branding

Logo badge on device casing or bezel.

Part No: **PCPE-PSLOGOB**

### Asset Tagging

Standard, using CPE label set.

Part No: **PCPE-PSATAG1**

### BIOS Development

Part No.: **PCPE-PSBDEVA**

*All technical specifications are subject to change without notice.*



## PROTECT FULL MAINTENANCE SERVICES



### ProTect PLUS

Every TOUGHBOOK is supported by our standard three year ProTect service, but ProTect PLUS is a value-packed upgrade, offering you extra peace of mind through the additional of the following services:

- Battery Confidence: proactive battery replacement (3 years only)
- Monthly service reporting on full estate of devices
- One working day of on-demand consultancy every year
- Full access to the TOUGHBOOK ServiceCloud Advanced Knowledge Base
- Remote technical support
- Full inspection report for returned devices
- Small, cosmetic repairs and reinstatement of IP integrity

SKU	Description
PCPE-PROTP3	TOUGHBOOK ProTect PLUS 3 Years (Incl. 3 yr Battery Confidence)
PCPE-PROTP4	TOUGHBOOK ProTect PLUS 4 Years (Incl. 3 yr Battery Confidence)
PCPE-PROTP5	TOUGHBOOK ProTect PLUS 5 Years (Incl. 3 yr Battery Confidence)



### ProTect PLUS Premium

For the ultimate protection, tailor your service plan by adding on any of the ProTect PLUS Premium modules below:

- Infinity Maintenance Service – *Infinity pricing all ProTect PLUS services. Other Premium modules below are priced on top of Infinity.*
- Remote Device Monitoring
- Self-Maintenance: Training & Spare Parts Access
- Return without SSD
- Global Service
- Device Management
- Software Maintenance
- Rapid Replacement
- Alternative Packaging

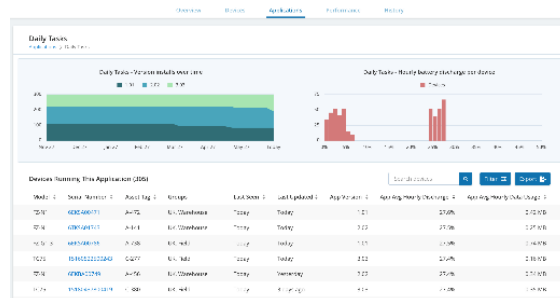
SKU	Description
PCPE-INFAB3	TOUGHBOOK Infinity 3 Years (Incl. 3 yr Battery Confidence)
PCPE-INFAB4	TOUGHBOOK Infinity 4 Years (Incl. 3 yr Battery Confidence)
PCPE-INFAB5	TOUGHBOOK Infinity 5 Years (Incl. 3 yr Battery Confidence)

## ENTERPRISE MOBILITY INTELLIGENCE



### TOUGHBOOK Smart Essentials Suite

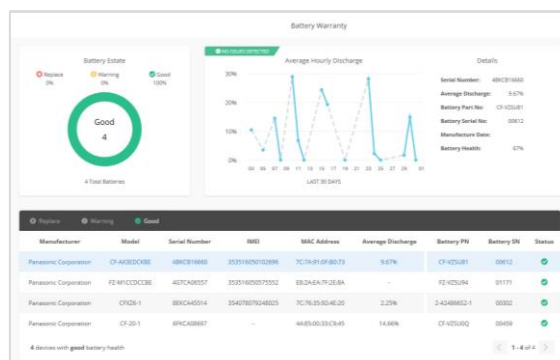
Real time analytics, powered by B2M Solutions, showing the health and performance of your estate of mobile devices, focussing on areas such as battery life, data usage, disruptions and connectivity. Enables the user to recognise patterns of usage and potentially pre-empt issues before they arise. The full suite includes access to the core dashboard as well as the Smart Battery Monitor dashboard, and APIs.



SKU	Description
CF-LESPSESS1	Smart Essentials Bundle - 1 year (Smart Service, Battery Monitor and APIs)
CF-LESPSESS3	Smart Essentials Bundle - 3 year (Smart Service, Battery Monitor and APIs)
CF-LESPSESS5	Smart Essentials Bundle - 5 year (Smart Service, Battery Monitor and APIs)

### Smart Battery Monitor

Smart Battery Monitor gives users real time insight into battery usage and health in detail cross an estate of devices. It focuses on battery serial numbers and allows the user to track, identify and replace batteries before they impact productivity. Alerts can also be set up.



SKU	Description
CF-LESPBAEE1	1 Year Smart Battery Monitor (Elemex Battery Essentials)
CF-LESPBAEE3	3 Year Smart Battery Monitor (Elemex Battery Essentials)
CF-LESPBAEE5	5 Year Smart Battery Monitor (Elemex Battery Essentials)



## SOFTWARE SOLUTION PARTNERS

### **ABSOLUTE**<sup>®</sup>

#### **Cyber Resilience**

Absolute is the industry benchmark in endpoint resilience. It ensures customers' digital operations and mobile workforces stay efficient, productive, and safe using innovative [Secure Endpoint](#) and [Secure Access](#) products—leveraging the advantage of pioneering Absolute Persistence<sup>®</sup> technology embedded in the firmware of more than 600,000,000 devices. Once activated, Absolute Persistence is fiercely and uniquely resilient, surviving attempts to disable it, even if the device is re-imaged, the hard drive is replaced, or the firmware is updated. **No other technology can do this.**

*Contact your sales rep for part numbers.*

Website: <https://www.absolute.com/partners/device-compatibility/#panasonic>

### **SOTI**<sup>®</sup>

#### **Enterprise Mobility Management**

Part of the [SOTI ONE Platform](#), SOTI MobiControl is the Enterprise Mobility Management (EMM) solution designed for any device, any form factor, and any operating system (OS). Deploy apps to smartphones. Enroll and provision new tablets in the field. Track the location of rugged devices. Identify and neutralize security risks to the IoT endpoints. Protect critical data stored on mobile devices. Minimize device downtime so field workers stay productive.

*Contact your sales rep for part numbers.*

Website: <https://www.soti.net/products/soti-mobicontrol/>



#### **Sygic**

Sygic Professional GPS Navigation works offline and features truck specific routing, itinerary with time windows and over 60 APIs for development with Android and Windows based apps. Sygic technology is accessible through a complete set of SDKs for web and mobile development. During Sygic's 18-year experience, we developed countless mapping and navigation solutions for 3000+ integration partners and customers in various industries.

*Contact your sales rep for part numbers.*

Website: <https://www.sygic.com/enterprise/professional-gps-navigation-sdk>

**PROSERVICES**

## ACCESSORY SUMMARY 1

Solution Type	Part Number	Description
Power Management	FZ-VZSU1TU	Standard 5.000 mAh Battery for Standard Model
	FZ-VZSU1UU	Long-Life 6.800 mAh Battery for Standard Model
	FZ-VZSU1VU	Long Life 6.800 mAh Battery for Quick Release SSD Model
	FZ-VCBG210	4-Bay Battery Charger
	CF-AA5713A2*	AC Adaptor
	CF-LND1224A	Car charger 120W (12 - 32VDC)
	PCPE-LND1224BW	Car charger 120W (12 - 32VDC), Bare Wire
	CF-LND3676	Car charger 120W (22 - 32VDC), MIL-STD
	CF-LND80S-FD/BW	Car Charger (12-16VDC)
	CF-LND8024FD/BW	Car Charger (12-32VDC)
	PCPE-LNDFH11	Car Charger for Forklifts (70-110V)
	PCPE-LNDFH32	Car Charger for Forklifts (12-32V)
	PCPE-LNDFH60	Car Charger for Forklifts (20-60VDC)
Keyboard	FZ-VEKG21L*	Emissive IP65 Backlit Keyboard
Styluses	FZ-VNTG11U	Stylus Tether
	FZ-VNP026U	IP55 Digitiser Pen
	PCPE-CDSG2SH	Pen Holder
Productivity Solutions	FZ-VSCG211U	Smart Card Reader
	FZ-VRFG211U	HR-RFID Reader
	FZ-VFPG221U	Fingerprint Reader
	FZ-VBRG231U	Barcode Reader
	FZ-VTSG211U	Thermal Camera
	FZ-VLNG211U	Gigabit LAN Port
	FZ-VUBG211U	USB 2.0 Type A Port
	FZ-VSRG211U	Native Serial Port
	FZ-WSMG221U	Micro SDXC Port
Protection & Security	PCPE-KENLOK2	Kensington Lock
	PCPE-INFG2TG1	Tempered Glass
	PCPE-INFG2PF1	Privacy Screen
	FZ-VPF38U	LCD Protective Film
	CF-VNC002U	LCD Screen Cleaning Cloth
	PCPE-CERG2C1	Keyboard Cover
Carrying Solutions	FZ-VSTG21U	Rotating Hand Strap
	FZ-VNSG21U	Shoulder Strap including screws
	PCPE-INFSS03	Heavy Duty Shoulder Strap
	PCPE-INFG2H1	Rotating Hand Strap (Toughmate)
	PCPE-INFG2AO	Always On Case (Toughmate)
	PCPE-INFG2XS	Elastic X-Strap (Toughmate)
	PCPE-INFG2MF	ModuFlex (Toughmate)
	PCPE-INFUVA1	User Harness (Toughmate)
	PCPE-INFG2MB	Mobility Bundle (Toughmate)
	PCPE-INFG2B1	Mobility Bundle (Toughmate) with Deluxe Shoulder Strap
Desktop Docking Solutions	FZ-VEBG21U	TOUGHBOOK G2 Desktop Cradle
	CF-VEB201U	TOUGHBOOK 20 Desktop Port Replicator (compatible with TOUGHBOOK G2 + Keyboard)

All technical specifications are subject to change without notice.

## ACCESSORY SUMMARY 2

Solution Type	Part Number	Description
Vehicle Docking Solutions	PCPE-GJG1V* 01/02/05/08/09	TOUGHBOOK G1/G2 Tablet Vehicle Dock (Gamber Johnson)
	PCPE-HAVG1* 03/04	TOUGHBOOK G1/G2 Tablet Vehicle Dock (Havis)
	PCPE-PMTG2*01/02/03	TOUGHBOOK G2 Vehicle Dock (PMT)
	PCPE-GJ20V* 07/08	TOUGHBOOK 20 Vehicle Dock Gamber Johnson (compatible with TOUGHBOOK G2 + Keyboard)
	PCPE-HAV20* 07/08	TOUGHBOOK 20 Vehicle Dock Havis (compatible with TOUGHBOOK G2 + Keyboard)
Passive Mount Solutions	PCPE-CDSG2P1	TOUGHBOOK G2 Passive Mount to be operated with TOUGHMATE hand strap (to be purchases separately)
	PCPE-CDSG2P2	TOUGHBOOK G2 Passive Mount
Pillar mounting kits	PCPE-RAMFRK01	Pillar mount kit with 1.5" ball, 125mm arm and VESA plate
	PCPE-RAMFRK02	Pillar mount kit with 1.5" ball, 185 mm arm and VESA plate
	PCPE-RAMFRK03	Pillar mount kit with 1.5" ball, 270mm arm and VESA plate
Connectivity	PCPE-CRD90E1	Cradlepoint IBR900 router with 1-year NetCloud Mobile Essentials
	PCPE-CRD90E3	Cradlepoint IBR900 router with 3-year NetCloud Mobile Essentials
	PCPE-CRD90E5	Cradlepoint IBR900 router with 5-year NetCloud Mobile Essentials
	PCPE-CRD90A1	Cradlepoint IBR900 router with 1-year NetCloud Mobile Advanced
	PCPE-CRD90A3	Cradlepoint IBR900 router with 3-year NetCloud Mobile Advanced
	PCPE-CRD90A5	Cradlepoint IBR900 router with 5-year NetCloud Mobile Advanced

*All technical specifications are subject to change without notice.*



## ACCESSORY SUMMARY 3

Solution Type	Part Number	Description
<b>Professional Services</b>	PCPE-PSBIOSG	Custom BIOS Service – Gold
	PCPE-PSBDEVA	BIOS Development
	PCPE-PS20GIM	Image deployment per device (MOQ 30)
	PCPE-PSSIMIN	SIM Installation
	PCPE-PSATAG1	Asset Tagging
	PCPE-PSATAGB	Information Management Bundle
	PCPE-PSAUTOP	Autopilot Enrolment
	PCPE-PSLOGOB	Custom logo badge
	PCPE-PSSPACK	Solution Packaging
	PCPE-PSBTM01	Bespoke Training Material
<b>Smart Services</b>	CF-LESPSESS1	Smart Essentials Bundle - 1 year (Smart Service, Battery Monitor and APIs)
	CF-LESPSESS3	Smart Essentials Bundle - 3 year (Smart Service, Battery Monitor and APIs)
	CF-LESPSESS5	Smart Essentials Bundle - 5 year (Smart Service, Battery Monitor and APIs)
	CF-LESPBAEE1	1 Year Smart Battery Monitor (Elemex Battery Essentials)
	CF-LESPBAEE3	3 Year Smart Battery Monitor (Elemex Battery Essentials)
	CF-LESPBAEE5	5 Year Smart Battery Monitor (Elemex Battery Essentials)
<b>Lifecycle support solutions</b>	PCPE-PROTP3	TOUGHBOOK ProTect PLUS 3 Years (Incl. 3 yr Battery Confidence)
	PCPE-PROTP4	TOUGHBOOK ProTect PLUS 4 Years (Incl. 3 yr Battery Confidence)
	PCPE-PROTP5	TOUGHBOOK ProTect PLUS 5 Years (Incl. 3 yr Battery Confidence)
	PCPE-INFAB3	TOUGHBOOK Infinity 3 Years (Incl. 3 yr Battery Confidence)
	PCPE-INFAB4	TOUGHBOOK Infinity 4 Years (Incl. 3 yr Battery Confidence)
	PCPE-INFAB5	TOUGHBOOK Infinity 5 Years (Incl. 3 yr Battery Confidence)

Panasonic and Toughbook are brand names and registered trademarks of Panasonic Corporation. Intel, the Intel logo, Intel Core, Intel vPro, Core Inside and vPro Inside are trademarks of Intel Corporation in the U.S. and other countries. Microsoft® and Windows® are registered trademarks of Microsoft® Corporation of the United States and/or other countries. All rights reserved. All other brand names shown are the registered trademarks of the relevant companies.