



Product specification (design and specification subject to change without notice)

■ DISPLAY PANEL

Screen Size (Diagonal)	54.6-inch (1387 mm)
Panel Type / Backlight	IPS / Direct LED
Aspect ratio	16:9
Effective Display Area (W x H)	1209.6 x 680.3 mm / 47.6" x 26.7"
Resolution (H x V)	1920 x 1080
Brightness (typ)	500 cd/m ²
Contrast Ratio (typ)	1100:1
Dynamic Contrast Ratio	500000:1
Max. Display Colors	approx. 1.07 Billion
Viewing Angle (Horizontal / Vertical)	178° / 178° (CR ≥ 10)
Response Time (typ)	8.0 ms (G to G)
Panel Life (typ) ¹	approx. 60000 hours
Panel Surface Treatment	Advanced Anti-glare type (Haze 28%)

¹ When the panel lifetime is at 50% of the brightness under the condition of 25 degrees Celsius (+/- 2 degrees celsius).

■ CONNECTION TERMINAL

HDMI IN	HDMI Type A Connector x 1	Linear PCM (Sampling frequency: 48 kHz/44.1 kHz/32 kHz)
DVI-D IN	DVI-D 24-pin x 2	Compliance with DVI Revision 1.0 Compatible with HDCP 1.3
PC IN	Mini D-Sub 15-pin x 1 (Female)	Y/G : with sync 1.0 V [p-p] (75 Ω) : without sync 0.7 V [p-p] (75 Ω) P _B /C _B /B : without sync 0.7 V [p-p] (75 Ω) P _R /C _R /R : without sync 0.7 V [p-p] (75 Ω) HD/VD : 1.0 - 5.0 V [p-p] (high impedance)
Display Port IN	DisplayPort (DP1.1 Dual Mode Only) x 1	Linear PCM (Sampling frequency: 48 kHz/44.1 kHz/32 kHz)
AUDIO 1 IN	Stereo Mini Jack (M3) x 1	0.5 V [rms]
AUDIO 2 IN	L/R:Pin Jack x 1 set	0.5 V [rms]
SERIAL IN / OUT	D-sub 9pin x 1 / x 1, RS-232C Compatible	
DIGITAL LINK IN	RJ45 x 1, Long Reach Mode (Shared with LAN IN)	
DIGITAL LINK OUT	RJ45 x 1 (Shared with LAN OUT)	
LAN IN / OUT	RJ45 x 1 / x 1, 100BASE-TX, Compatible with PLink™ (Shared with DIGITAL LINK)	
IR IN / OUT	Stereo Mini Jack (M3) x 1 / x 1	
AUDIO OUT	L/R Pin Jack x1 set Variable (-∞ - 0 dB) (1 kHz 0 dB Input, 10 k Ω Load)	0.5 V [rms]
USB	USB 2.0 Type A connector x 1 DC 5 V / 500 mA (USB3.0 is not supported.)	

■ AUDIO

Speaker	8 Ω ,20 W [10 W + 10 W] (10 % THD)
---------	------------------------------------

■ ELECTRICAL

Power Requirements	AC 110 - 127 V 50 Hz/60Hz AC 220 - 240 V 50Hz/60Hz
Power Consumption	300 W
On Mode Average Power Consumption ¹	165 W
Power Off Condition	approx. 0 W
Stand-by Condition	approx. 0.5 W
Apparent power	312 VA

¹ Based on IEC 62087 Ed.2 measurement method

■ MECHANICAL

Dimension (W x H x D)	1210.6 x 681.3 x 97.3mm / 47.658" x 26.820" x 3.829"
Weight	approx. 23.0 kg / approx. 50.7 lbs
Carton Dimensions (W x H x D)	1395 x 848 x 280mm / 55.0" x 33.4" x 11.1"
Gross Weight	34 kg / 75.0 lbs
Cabinet Material / Color	Metal / Black
Bezel Width	T / B / R / L 0.44 mm / 0.018"
Pitch for Wall-Hanging	VESA Compliant 400 x 400 mm / 15.8" x 15.8" (Installed by: M6 screws / Screw hole depth 12 mm / 0.47")

■ INSTALLATION

Orientation	Landscape / Portrait
Tilting Angle	Landscape : 0 - 0 degrees forward / backward Portrait : 0 - 0 degrees forward / backward

MAIN FEATURE

DIGITAL LINK	YES
USB Media Player	YES
Failover/Failback	YES
Data Cloning	YES
Digital ZOOM	YES
Multi display settings	YES
Power on screen delay	YES
Auto setting	YES
Screensaver	YES
HDMI/PC/DVI-D/DIGITAL LINK power management	YES
Power save	YES
Button lock	YES
Controller user level	YES
OSD Control	YES
Input search	YES
6-segment colour management	YES
Dynamic contrast	YES
Colour enhancement	YES
Refine enhancer	YES
Gradation smoother	YES
Frame control	YES
Reverse scan	YES
Multi dynamic backlight	YES
Set up timer	YES
AMX D.D.	YES
Crestron Connected™	YES
Extron XTP	YES
WEB Browser control	YES
PJLink™	YES
Multi Monitoring & Control Software compatible	YES
Video Wall Manager	YES
Long life mode / Auto brightness adjustment	YES
Operating Time	24h / 7d

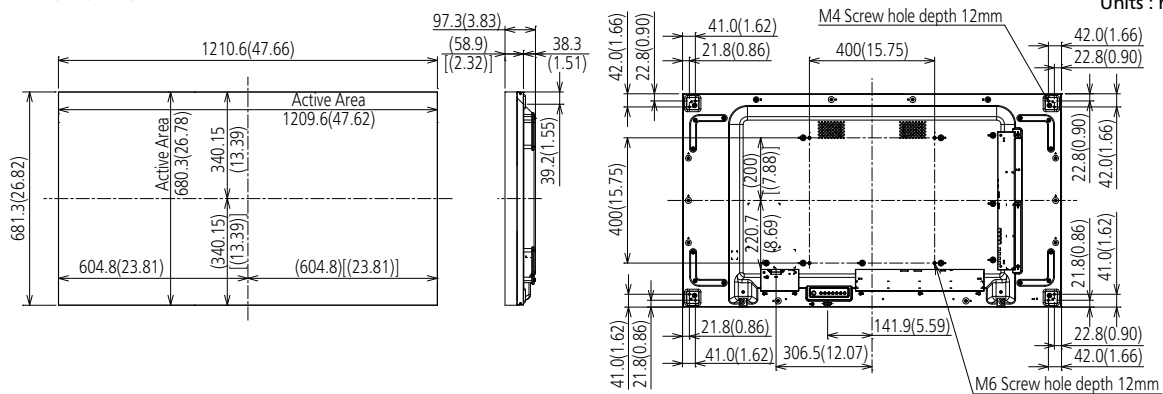
1 In case of running for a long time, the moving image is recommended to be displayed. If you display a still picture for an extended period, the image retention might remain on the screen. However, image retention can gradually disappear by displaying a moving images.

REMOTE CONTROL TRANSMITTER

Power Requirements	DC 3 V (2 x AAA Size batteries)
Operating distance	approx. 7 m ¹ / 23 ft
Weight	approx. 102 g / 4.1 oz including batteries
Dimensions (W x H x D)	48 x 145 x 27 mm / 1.9" x 5.7" x 1.1"

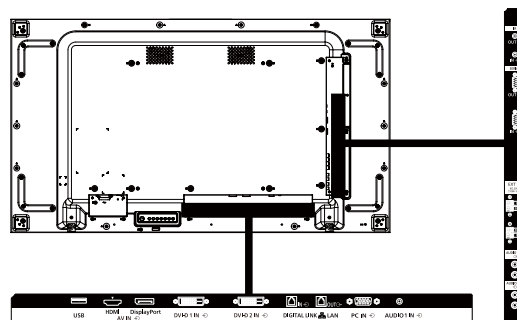
1 When operated directly in front of receptor

DIMENSIONS



Cautions: This drawing is not a scale
Units : mm (inches)

CONNECTION TERMINAL



STANDARD (CERTIFICATIONS)

SAFETY REGULATIONS	UL 62368-1 2nd Edition UL 60950-1 2nd Edition, CAN / CSA-C22.2 No 60950-1-07 IEC 62368-1 : 2014 (Second Edition) IEC 60950-1 : 2005 (Second Edition) + Am 1:2009 + Am 2 : 2013 EN 62368-1 : 2014 (Second Edition) EN 60950-1 : 2006 + A11 : 2009 + A1:2010 + A12:2011 + A2:2013 AS / NZS 60950.1 : 2011 Inc A1
RADIATION REGULATIONS	FCC 47 CFR, Part 15, Subpart B Class A ICES-003 EN 55032 : 2012 + AC : 2013 Class A EN 55022 : 2010 EN 55013 : 2013 EN 55024 : 2010 EN 61000-3-2 : 2014 EN 61000-3-3 : 2013 AZ / NRZ CISPR32

ENVIRONMENTAL

Operating Environment	Temperature : 0°C to 40°C / 32°F to 104°F ¹ 0°C to 35°C / 32°F to 95°F ²
	Humidity : 10% to 90% (No condensation)
	Altitude : 0 to 2800 m / 0 to 9186 feet
Storage Environment	Temperature : -20°C to 60°C / -4°F to 140°F
	Humidity : 10% to 90% (No condensation)

- 1 : for up to 1400 m (4593 ft) altitude
- 2 : for between 1400 m (4593 ft) and 2800 m (9186 ft) altitude
Depending on the temperature or humidity conditions, uneven brightness may be observed. This is not a malfunction.
- This unevenness will disappear while applying current continuously. If not, consult the distributor.

INCLUDED ACCESSORIES

- AC cord 2.0 m (79") - Remote Control
- External IR Receiver (Approx. 1.8 m (70.9"))
- LAN Cable (CAT5e) (Approx. 2.0 m (79")) - Batteries (AAA size) x 2
- Clamper x 3 - CD-ROM/User manual - Operating instruction book

OPTIONAL ACCESSORIES

Installation Mount	TY-VK55LV2
Auto Display Adjustment Upgrade Kit	TY-VUK10
Early Warning Software	ET-SWA100 series

1 Specifications and appearance are subject to change without notice.

List of correspondence signals

R: D-sub RGB (PC IN) H: HDMI (HDMI)
 Y: YCbCr/YPbPr (PC IN) DP: DisplayPort (DisplayPort)
 D: DVI-D (DVI-D IN1, DVI-D IN2) DL: DIGITAL LINK (DIGITAL LINK)

The picture signal which can indicate this machine is as it is the following table.

Correspondence signal	Resolution (dot)	Scan rate		Dot clock rate (MHz)	Format
		Horizontal (kHz)	Vertical (Hz)		
525i (480i)	720 x 480	15.73	59.94	13.50	R/Y
625i (576i)	720 x 576i	15.63	50.00	13.50	R/Y
525i (480i)	720 (1440) x 480i ²	15.73	59.94	27.00	D/H/DP/DL
625i (576i)	720 (1440) x 576i ²	15.63	50.00	27.00	D/H/DP/DL
525p (480p)	720 x 480	31.47	59.94	27.00	R/Y/D/H/DP/DL
625p (576p)	720 x 576	31.25	50.00	27.00	R/Y/D/H/DP/DL
750 (720) /60p	1280 x 720	45.00	60.00	74.25	R/Y/D/H/DP/DL
750 (720) /50p	1280 x 720	37.50	50.00	74.25	R/Y/D/H/DP/DL
1125 (1080) /60i ¹	1920 x 1080i	33.75	60.00	74.25	R/Y/D/H/DP/DL
1125 (1080) /50i	1920 x 1080i	28.13	50.00	74.25	R/Y/D/H/DP/DL
1125 (1080) /24p	1920 x 1080	27.00	24.00	74.25	R/Y/D/H/DP/DL
1125 (1080) /24PsF	1920 x 1080i	27.00	48.00	74.25	R/Y
1125 (1080) /25p	1920 x 1080	28.13	25.00	74.25	R/Y/D/H/DP/DL
1125 (1080) /30p	1920 x 1080	33.75	30.00	74.25	R/Y/D/H/DP/DL
1125 (1080) /60p	1920 x 1080	67.50	60.00	148.50	R/Y/D/H/DP/DL
1125 (1080) /50p	1920 x 1080	56.25	50.00	148.50	R/Y/D/H/DP/DL
640 x 400	640 x 400	31.47	70.09	25.18	R/Y/D/H/DP/DL
	640 x 400	37.86	85.08	31.50	R/Y/D/H/DP/DL
640 x 480	640 x 480	31.47	59.94	25.18	R/Y/D/H/DP/DL
	640 x 480	35.00	66.67	30.24	R/Y/D/H/DP/DL
	640 x 480	37.86	72.81	31.50	R/Y/D/H/DP/DL
	640 x 480	37.50	75.00	31.50	R/Y/D/H/DP/DL
800 x 600	800 x 600	43.27	85.01	36.00	R/Y/D/H/DP/DL
	800 x 600	35.16	56.25	36.00	R/Y/D/H/DP/DL
	800 x 600	37.88	60.32	40.00	R/Y/D/H/DP/DL
	800 x 600	48.08	72.19	50.00	R/Y/D/H/DP/DL
832 x 624	800 x 600	46.88	75.00	49.50	R/Y/D/H/DP/DL
	800 x 600	53.67	85.06	56.25	R/Y/D/H/DP/DL
	832 x 624	49.72	74.55	57.28	R/Y/D/H/DP/DL
852 x 480	852 x 480	31.47	59.94	34.24	D/H/DP/DL
1024 x 768	1024 x 768	39.55	50.00	51.89	D/H/DP/DL
	1024 x 768	48.36	60.00	65.00	R/Y/D/H/DP/DL
	1024 x 768	56.48	70.07	75.00	R/Y/D/H/DP/DL
	1024 x 768	60.02	75.03	78.75	R/Y/D/H/DP/DL
	1024 x 768	65.55	81.63	86.00	R/Y/D/H/DP/DL
1066 x 600	1024 x 768	68.68	85.00	94.50	R/Y/D/H/DP/DL
	1066 x 600	37.64	59.94	53.00	D/H/DP/DL
1152 x 864	1152 x 864	53.70	60.00	81.62	D/H/DP/DL
	1152 x 864	63.99	70.02	94.20	R/Y/D/H/DP/DL
	1152 x 864	67.50	75.00	108.00	R/Y/D/H/DP/DL
	1152 x 864	77.09	85.00	119.65	R/Y/D/H/DP/DL
1152 x 870	1152 x 870	68.68	75.06	100.00	R/Y/D/H/DP/DL
1280 x 720	1280 x 720	44.76	60.00	74.48	R/Y/D/H/DP/DL
1280 x 768	1280 x 768	39.55	49.94	65.18	R/Y/D/H/DP/DL
	1280 x 768	47.70	60.00	80.14	R/Y/D/H/DP/DL
	1280 x 768	47.78	59.87	79.50	R/Y/D/H/DP/DL
1280 x 800	1280 x 800	41.20	50.00	68.56	R/Y/D/H/DP/DL
	1280 x 800	49.31	59.91	71.00	R/Y/D/H/DP/DL
	1280 x 800	49.70	59.81	83.50	R/Y/D/H/DP/DL
1280 x 960	1280 x 960	60.00	60.00	108.00	R/Y/D/H/DP/DL
	1280 x 960	85.94	85.00	148.50	R/Y
1280 x 1024	1280 x 1024	63.98	60.02	108.00	R/Y/D/H/DP/DL
	1280 x 1024	79.98	75.02	135.00	R/Y/D/H/DP/DL
	1280 x 1024	91.15	85.02	157.50	R/Y/D/H/DP/DL
1360 x 768	1360 x 768	47.71	60.02	85.50	D/H/DP/DL
	1360 x 768	47.70	60.00	84.72	D/H/DP/DL
	1360 x 768	47.72	59.80	84.75	D/H/DP/DL
1366 x 768	1366 x 768	39.55	50.00	69.92	D/H/DP/DL
	1366 x 768	48.39	60.03	86.71	R/Y/D/H/DP/DL
	1366 x 768	48.00	60.00	72.00	R/Y/D/H/DP/DL
	1366 x 768	39.56	49.89	69.00	R/Y/D/H/DP/DL
	1366 x 768	47.71	59.79	85.50	R/Y/D/H/DP/DL
1400 x 1050	1400 x 1050	65.22	60.00	122.61	D/H/DP/DL
	1400 x 1050	82.20	75.00	155.85	R/Y/D/H/DP/DL
1440 x 900	1440 x 900	55.47	59.90	88.75	R/Y/D/H/DP/DL
	1440 x 900	55.92	60.00	106.47	R/Y/D/H/DP/DL
1600 x 900	1600 x 900	46.30	50.00	97.05	D/H/DP/DL
	1600 x 900	60.00	60.00	108.00	D/H/DP/DL
	1600 x 900	55.99	59.95	118.25	D/H/DP/DL
	1600 x 900	55.92	60.00	119.00	D/H/DP/DL
1680 x 1050	1680 x 1050	65.29	59.95	146.25	R/Y/D/H/DP/DL
1600 x 1200	1600 x 1200 ³	75.00	60.00	162.00	R/Y/D/H/DP/DL
1920 x 1080	1920 x 1080 ⁴	66.59	59.93	138.50	R/Y/D/H/DP/DL
	1920 x 1080	67.50	60.00	148.50	R/Y/D/H/DP/DL
1920 x 1200	1920 x 1200 ^{3, 5}	74.04	59.95	154.00	R/Y/D/H/DP/DL

● The signal format distinguished automatically will be sometimes indication different from an actual input signal.

1: When 1125 (1035) /60i signal is input, it is displayed as 1125 (1080) /60i signal.

2: Pixel-Repetition signal (dot clock frequency 27.0 MHz) only

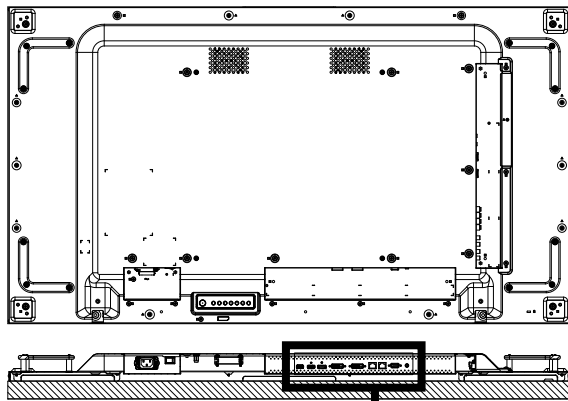
3: Displayed with image elements thinned out in the image processing circuit.

4: Based on VESA CVT-RB (Reduced Blanking) standard

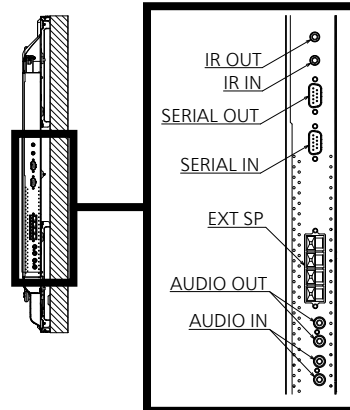
5: Not supported when "DIGITAL LINK mode" is set to "Long reach"

● Drawing of terminals

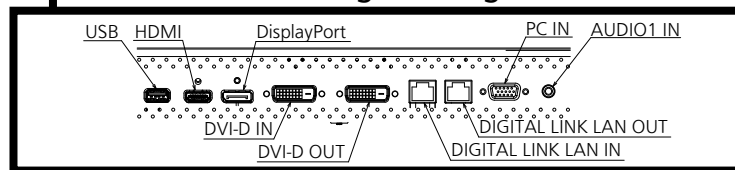
View from back



Magnified figure of terminal b

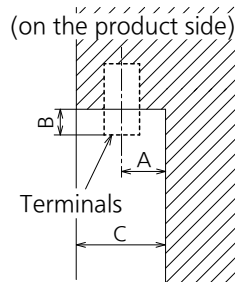


Magnified figure of terminal a



Sectional view of terminal a

(USB / HDMI / DisplayPort / DVI-D IN / DVI-D OUT / DIGITAL LINK LAN IN / DIGITAL LINK LAN OUT / PC IN / AUDIO1 IN)



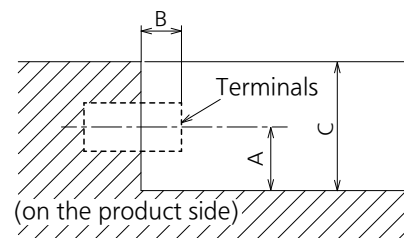
Terminal a
55VF2W Terminal (Bottom)

Units : mm (inch)

	USB	HDMI	DisplayPort	DVI-D	DIGITAL LINK LAN	PC IN	AUDIO1 IN
A	15.0 (0.59)	14.4 (0.57)	14.4 (0.57)	16.0 (0.63)	16.0 (0.63)	17.2 (0.68)	17.5 (0.69)
B	-	-	-	5.5 (0.22)	-	5.1 (0.2)	2.5 (0.1)
C	42.9 (1.69)						

Sectional view of terminal b

(IR OUT / IR IN / SERIAL IN / SERIAL OUT / AUDIO IN / AUDIO OUT)



Terminal b
55VF2W Terminal (Side)

Units : mm (inch)

	IR	SERIAL	AUDIO
A	15.5 (0.61)	15.2 (0.6)	11.9 (0.47)
B	2.0 (0.08)	4.5 (0.18)	8.5 (0.33)
C	37.9 (1.49)		

1 Due to the construction of terminal, some types of connecting cable or USB memory device cannot be used.
Be sure to use connecting cable or USB memory device after confirmation in this drawing.