

KAIROS

Next Gen Kairos Core 200 and 2000 Mainframes Achieve Unprecedented Innovation for Live Video



Three New Models Added to Kairos Core Lineup

The KAIROS lineup has been further expanded with three new mainframes: the midrange Kairos Core 200 (AT-KC200), the high-end Kairos Core 2000 (AT-KC2000) offering unmatched performance, and the Kairos Core 2000 (AT-KC2000S1) for expanded video input/output performance.

Significantly Improved Functionality and Performance

Video-processing performance, media storage capacity and the number of inputs/ outputs (I/O) have been significantly upgraded.

The Kairos Core 2000 offers 30% greater video processing capability (vs. AT-KC1000) making it ideal for large-scale, extra-expressive production of live video.

Supports Diverse Signals and Multiple Channels

Kairos Core 200/2000 supports a variety of input and output signals, including SDI*, ST 2110, NDI®, and SRT. Its also support ST 2022-7 redundancy, which duplicates the network for operational reliability. Redundancy without halving the number of inputs; the AT-KC2000S1 also does not halve both of inputs and outputs.

*Requires Kairos Software Version 1.6 (FY2023 Q4) or later.

• NDI® is a registered trademark of NewTek, Inc. in the United States and other countries.

AT-KC200
Kairos Core 200
(Main Frame)



AT-KC2000
AT-KC2000S1
Kairos Core 2000
(Main Frame)



Next Gen KAIROS for Extra-innovative Live-video Production

AT-KC200

Kairos Core 200
(Main Frame)



AT-KC2000/KC2000S1

Kairos Core 2000
(Main Frame)



New Midrange KAIROS with Increased Functionality and Performance

High-end KAIROS for Next-gen Live-video Production Featuring Unmatched Performance Like Never Before

Many More I/Os, Including SDI

AT-KC200/KC2000: Doubled the number of ST 2110 output of HD 3G/4K video (vs. AT-KC1000)*1

AT-KC2000S1: HD 3G/4K video inputs doubled for each format, enabling highly flexible input/output.*1

AT-KC200/KC2000/AT-KC2000S1: Compatible with SDI I/O Board (optional AT-KC20M1).*1

Also, multiviewer output expanded to 4 channels.

Upgraded Video-processing Performance

AT-KC200: 50% greater video processing capability (vs. AT-KC1000).

AT-KC2000/KC2000S1: 30% greater video processing capability (vs. AT-KC1000).

Much More Internal Storage

AT-KC200: 1.3x more for the RAM player, 5x more for the clip player, and 9x more for still images (vs. AT-KC100)

AT-KC2000/KC2000S1: 1.5x more for the RAM player, over 4x more for the clip player, and over 2x more for still images (vs. AT-KC1000)

Improved Reliability and Operability

The new chassis' low-speed fans combine quiet operation with high throughput.

ST 2022-7 network redundancy ensures improved reliability in the event of a network failure, and redundancy is possible without halving the number of inputs. Furthermore, the AT-KC2000S1 has no halving of both the number of inputs and outputs.

Major Specifications

Model Number	AT-KC200	AT-KC2000	AT-KC2000S1
Power Requirement	AC100-127V/200-240V, 50/60Hz, 10A/5A, Redundant		
Weight	Approx. 17 kg / 37.47 lb without accessories & options		
Dimensions (W x H x D)	430 mm x 176 mm x 505 mm / 16-15/16" x 6-15/16" x 19-7/8" (4RU)		
Agile Input Routing Support	Yes		
HD 1.5G I/O	64 in x 40 out *1		
HD 3G I/O	32 in x 40 out *1		64 in x 40 out *1
4K 12G I/O	8 in x 10 out *1		16 in x 10 out *1
ST 2110	QSFP28 x 2, 100 GbE		QSFP28 x 4, 100 GbE
SDI	Supported with optional AT-KC20M1 SDI I/O Board (see right column for details)*1		
NDI®*2 (HD only)	2 in/2 out, Audio 16 ch		
RTP/SRT/RTMP/RTSP	8 in/2 out (only input for RTSP)		16 in/4 out (only input for RTSP)
RAM Player	8 ch, 32 GB, Uncompressed		8 ch, 96 GB, Uncompressed
Clip Player	2 ch, 400 GB, Compressed		2 ch, 850 GB, Compressed
Still Store	up to 4K, 7 GB		up to 4K, 32 GB
Audio Player	4 ch, 400 GB, Compressed*3		4 ch, 850 GB, Compressed*3
Multiviewer	4 ch, Max. 36 PiP		
CANVAS Function	up to 8K, 32 Megapixels		up to 12K, 66 Megapixels
ST 2022-7 Redundancy	Yes, Inputs not halved*1 / outputs halved		Yes, Inputs/outputs not halved*1
PTP Support	Yes		
LAN	2 ports, 1 GbE		

*1: Requires software Version 1.6 (FY2023 Q4) or later. *2: NDI® is a registered trademark of NewTek, Inc. in the United States and other countries.

*3: Share capacity with clip player.

New Options to Expand the KAIROS System

Optional Hardware

AT-KC20M1

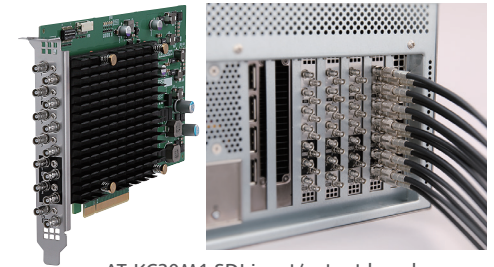
SDI I/O Board

SDI (micro BNC) input/output is possible by installing the SDI I/O Board in a slot on the back of the Kairos Core 200/2000 mainframe, enabling 8 inputs/4 outputs and Ref In/Out on a single board.

Up to four boards can be installed in one Kairos Core unit for a maximum 32 inputs/16 outputs (HD/FHD).

Note: Scheduled to be released in FY2023 4Q.

Compatible with AT-KC200, AT-KC2000 and AT-KC2000S1. Requires software Version 1.6 or later.



AT-KC20M1 SDI input/output board and its installation example

SDI Inputs and Outputs of Kairos Core 200/2000

	AT-KC200	AT-KC2000	AT-KC2000S1
Maximum SDI boards mount	Max. 4 units		Max. 2 units
HD/FHD Maximum I/O	32 in x 16 out		16 in x 8 out
4K Maximum I/O	16 in x 8 out		8 in x 4 out

Optional Software

AT-SFCM10

Kairos Core Manager

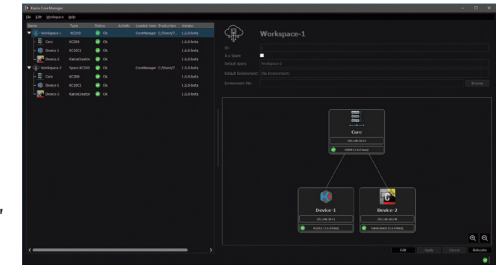
This optional software, which runs on a PC networked to KAIROS, enables intuitive GUI-based operation for backup, media synchronization, data transfer, etc. using multiple Kairos Core units.

Note: Scheduled to be released in FY2023 4Q.

Compatible with AT-KC200, AT-KC2000, AT-KC2000S1, AT-KC100 and AT-KC1000. Require software upgrades.

Operating system requirements: Windows 10 or 11.

Kairos Core Manager may be used with one or two Kairos Core units free of charge, or with a purchased license for additional units.



AT-SFCM10 Kairos Core Manager operation screen

This screen shot is under development.

Panasonic Connect Co., Ltd.

2-15 Matsuba-cho, Kadoma, Osaka 571-8503 Japan



For more information, please visit Panasonic web site <https://pro-av.panasonic.net/en/qr/>

SP-KC2PREWEB6 202401Z



Factories of Panasonic Connect Co., Ltd. have received ISO14001:2015-the Environmental Management System certification. (Except for 3rd party's peripherals.)