





# TOUGHBOOK 40

## 14" FULLY RUGGED WINDOWS 11 PRO NOTEBOOK WITH FULL-HD TOUCH DISPLAY

TOUGHBOOK 40 with Windows 11 Pro, magnesium chassis, flexible configurations and expansion areas is the most versatile 14" fully rugged Toughbook ever built, but doesn't compromise on durability, with improved strength and IP66 resistant design.

In terms of flexibility, the TOUGHBOOK 40 is equally outstanding. It offers a huge array of flexible configuration options, making it easier for customers to have exactly the device they want.

- Intel® Core™ Ultra5 processor 135H vPro®
- Windows 11 Pro
- 14" Full-HD Touch Active Matrix LCD, 1.200cd/m<sup>2</sup> brightness
- 16GB DDR5 RAM and 512GB Quick Release NVME OPAL SSD
- 2x USB 3.2, 1x Thunderbolt 4, 1x HDMI, 1x LAN and micro SDCX
- Left, Right, Rear and Palm Rest Expansion Area
- Long battery life of up to 12 hours (MobileMark 25)
- 4G or 5G with eSIM optional
- Dedicated GNSS optional
- -29 °C to +63 °C operating temperature
- Fully Rugged magnesium casing with carry handle
- IP66 Ingress Protection\*
- Withstands drops from a height of 180cm\*
- Shock and vibration protected for vehicle docking

*\*Tested by an independent third-party lab following MIL-STD810H*

*All technical specifications are subject to change without notice.*



# TOUGHBOOK 40 ACCESSORY ECOSYSTEM



All accessories in this guide are fully tested and certified in the Panasonic factory by Panasonic engineers

## LEFT EXPANSION AREA OPTIONS

### 2<sup>nd</sup> SSD Packs (SATA):



Option	SKU
NVMeOPAL 512 GB	FZ-V2S400T2U
NVMe OPAL 1 TB	FZ-V2S401T2U
NVMe OPAL 2 TB	FZ-V2S402T2U

### Other Options:



**DVD Multi Drive**

Part No: **FZ-VDM401AU**



**Smart Card Reader**

Part No: **FZ-VSC402U**



**Blu-ray Disc Drive**

Part No: **FZ-VBD401AU**

*All technical specifications are subject to change without notice.*



## RIGHT EXPANSION AREA OPTIONS



**Smart Card Reader**

Part No: FZ-VSC401U



**Battery Pack**

Common for standard battery.

Part No: **FZ-VZSU1XU**

## RAM MODULES

Option	SKU
16GB DDR5	FZ-BAZ2316
32GB DDR5	FZ-BAZ2332



*All technical specifications are subject to change without notice.*

## REAR EXPANSION AREA OPTIONS



**VGA + True Serial + 2<sup>nd</sup>  
GBit LAN**

Part No: FZ-VCN401U



**True Serial + USB 3.1  
Type A + 2<sup>nd</sup> HDMI 2.0**

Part No: FZ-VCN402U



**x2 USB 3.1 Type A + 2<sup>nd</sup>  
HDMI 2.0**

Part No: FZ-VCN403U



**x2 True Serial + 2<sup>nd</sup> GBit  
LAN**

Part No: FZ-VCN405G



**USB 3.1 Type A + USB 3.1  
Type c + 2<sup>nd</sup> HDMI 2.0**

Part No: FZ-VCN406U

*All technical specifications are subject to change without notice.*

## PALM REST EXPANSION AREA OPTIONS



**Contactless Smart Card Reader (HF-RFID)**

Part No: FZ-VNF401BU



**Fingerprint Reader (Windows Hello)**

Part No: FZ-VFP401BU

To be Secured Core PC compliant this item only can be installed by IT department



**Fingerprint Reader (Windows Hello, Multi User Authentication)**

Part No: FZ-VFP402BW

## CARRYING SOLUTIONS

**TOUGHBOOK 40 Shoulder Strap**

Contains D-Rings

Part No: FZ-VNS401U



**Breakable Shoulder Strap**

Does not contain D-rings. Alternative strap to be used with existing d-rings or cases with d-rings.

Part No:PCPE-SYSSSB1

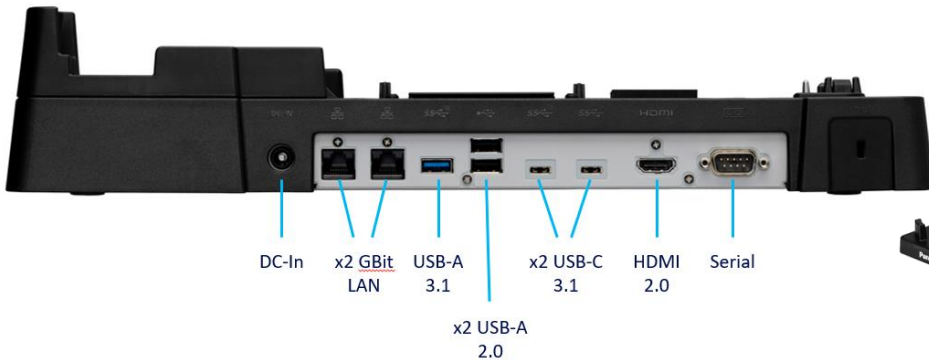


*All technical specifications are subject to change without notice.*

## DOCKING SOLUTIONS

### TOUGHBOOK 40 Desktop Port Replicator

Part No: **FZ-VEB401U**



USB-C 2.0



Release Lock

### TOUGHBOOK 40 Vehicle Dock (Gamber-Johnson)

#### Lite Port Replication:

- x2 LAN, x2 USB 2.0 type A, x1 USB 2.0 Type c, x1 USB 3.2 Type A, x2 USB 3. type c, x1 Serial (**Full Port Replication** + x1 HDMI)
- Optional quad antenna pass-thru
- 15V DC-in

Size: 372 x 312 x 71 mm

Weight: 2.04 kg

#### Part No:

- TB-GJ-VD40FPNR Full Port Replication (no antenna pass-thru)
- TB-GJ-VD40FPQR Full Port Replication (with quad antenna pass-thru)
- TB-GJ-VD40LPNR Lite Port Replication (no antenna pass-thru)
- TB-GJ-VD40LPQR Lite Port Replication (with quad antenna pass-thru)
- TB-GJ-VC40NR without Electronics



### TOUGHBOOK 40 Vehicle Dock (Havis)

#### Standard port replication:

- x2 LAN, x2 USB 2.0 type A, x1 USB 2.0 Type c, x1 USB 3.0 Type A, x1 USB 3.0 type c, x1 Serial (**Advanced port replication** + x1 HDMI)
- Optional quad antenna pass-thru
- 16V DC-in

Size: 336 x 313 x 67 mm

Weight: 2.5 kg

#### Part No:

- PCPE-HAV4001 without Electronics
- PCPE-HAV4002 Standard Port Replication (no antenna pass-thru)
- PCPE-HAV4003 Standard Port Replication (with quad antenna pass-thru)
- PCPE-HAV4004 Advanced Port Replication (no antenna pass-thru)
- PCPE-HAV4005 Advanced Port Replication (with quad antenna pass-thru)



All technical specifications are subject to change without notice.



## POWER MANAGEMENT SOLUTIONS

### Main Battery

(6Cell, 68 Wh)

Part No: **FZ-VZSU1XU**



### AC Adaptor

Part No:CF-AA5713A2\*

\*E: UK; G: EU; T: Italy; D: Switzerland



### 4-bay Battery Charger

Part No: **FZ-VCB551W**

Does not contain AC adaptor



### Auto Adaptor (120W)

Part No: **CF-LND1224A**



## PRODUCTIVITY SOLUTIONS

### TOUGHBOOK 40 Stylus

Part No: **FZ-VNP401U**



### TOUGHBOOK 40 Tether

Part No: **FZ-VNT005U**



### Toughmate Stylus Tether

Part No: **PCPE-INFUVA2**



### USB Optical Mouse

Part No: **PCPE-LOGM901**



*All technical specifications are subject to change without notice.*

## SECURITY & PROTECTION SOLUTIONS

### LCD Screen Cleaning Cloth

Part No: **CF-VNC002U**

MOQ: 10 pcs



### Protective 14" LCD Film

Replacement for protective film pre-installed on TOUGHBOOK 40

Part No: **FZ-VPF39U**



### Kensington Lock

Part No: **PCPE-KENLOK2**



## OTHER PERIPHERALS

### Slimline External CD/DVD Writer

Part No: **PCPE-FCDVR05**



*All technical specifications are subject to change without notice.*

## CONNECTIVITY

### Cradlepoint IBR 900 Router

Compact, ruggedized Gigabit-Class LTE router for advanced in-vehicle and IoT connectivity.

Dimensions: 118mm x 113.5mm x 30.5mm / 4.6" x 4.5" x 1.2"

Weight: 400g / 0.88 lb

Part Nos:

- **PCPE-CRD90E1** - Cradlepoint IBR900 router with 1-year NetCloud Mobile Essentials Plan
- **PCPE-CRD90E3** - Cradlepoint IBR900 router with 3-year NetCloud Mobile Essentials Plan
- **PCPE-CRD90E5** - Cradlepoint IBR900 router with 5-year NetCloud Mobile Essentials Plan
- **PCPE-CRD90A1** - Cradlepoint IBR900 router with 1-year NetCloud Mobile Advanced Plan
- **PCPE-CRD90A3** - Cradlepoint IBR900 router with 3-year NetCloud Mobile Advanced Plan
- **PCPE-CRD90A5** - Cradlepoint IBR900 router with 5-year NetCloud Mobile Advanced Plan



*All technical specifications are subject to change without notice.*



## PROFESSIONAL SERVICES

### Custom BIOS Services

Part No: **PCPE-PSBIOSG**

### Autopilot Enrolment

Part No: **PCPE-PSAUTOP**

### SIM Installation

Part No: **PCPE-PSSIMIN**

### Information Management Bundle

IMEI, MAC, SIM, ASSET, Hardware Hash reporting.

Part No: **PCPE-PSATAGB**

### Solution Packaging

Up to 10 items packaged together in a box.

Does not include custom designed case.

Part No: **PCPE-PSSPACK**

### Custom Imaging

Part Nos:

- **PCPE-PS20GIM - Image deployment per device (MOQ 30)**
- **Custom Image Creation - Price on request.**

### Customer Branding

Logo badge on device casing or bezel.

Part No: **PCPE-PSLOGOB**

### Asset Tagging

Standard, using CPE label set.

Part No: **PCPE-PSATAG1**

### Custom Logistics

Part No: **PCPE-PSCDL01**

Price on Request.

*All technical specifications are subject to change without notice.*

## PROTECT FULL MAINTENANCE SERVICES



### ProTect PLUS

Every TOUGHBOOK is supported by our standard three year ProTect service, but ProTect PLUS is a value-packed upgrade, offering you extra peace of mind through the additional of the following services:

- Battery Confidence: proactive battery replacement (3 years only)
- Monthly service reporting on full estate of devices
- One working day of on-demand consultancy every year
- Full access to the TOUGHBOOK ServiceCloud Advanced Knowledge Base
- Remote technical support
- Full inspection report for returned devices
- Small, cosmetic repairs and reinstatement of IP integrity

SKU	Description
PCPE-PROTP3	TOUGHBOOK ProTect PLUS 3 Years (Incl. 3 yr Battery Confidence)
PCPE-PROTP4	TOUGHBOOK ProTect PLUS 4 Years (Incl. 3 yr Battery Confidence)
PCPE-PROTP5	TOUGHBOOK ProTect PLUS 5 Years (Incl. 3 yr Battery Confidence)



### ProTect PLUS Premium

For the ultimate protection, tailor your service plan by adding on any of the ProTect PLUS Premium modules below:

- Infinity Maintenance Service – *Infinity pricing all ProTect PLUS services. Other Premium modules below are priced on top of Infinity.*
- Remote Device Monitoring
- Self-Maintenance: Training & Spare Parts Access
- Return without SSD
- Global Service
- Device Management
- Software Maintenance
- Rapid Replacement
- Alternative Packaging

SKU	Description
PCPE-INFAB3	TOUGHBOOK Infinity 3 Years (Incl. 3 yr Battery Confidence)
PCPE-INFAB4	TOUGHBOOK Infinity 4 Years (Incl. 3 yr Battery Confidence)
PCPE-INFAB5	TOUGHBOOK Infinity 5 Years (Incl. 3 yr Battery Confidence)

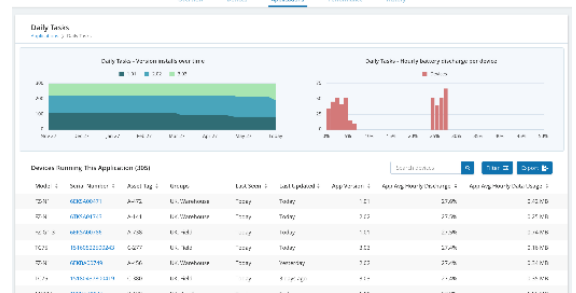


# ENTERPRISE MOBILITY INTELLIGENCE



## TOUGHBOOK Smart Essentials Suite

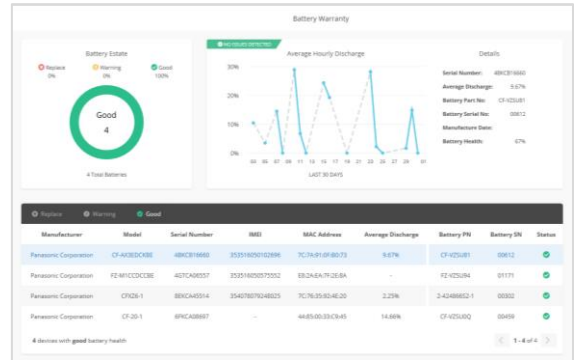
Real time analytics, powered by B2M Solutions, showing the health and performance of your estate of mobile devices, focussing on areas such as battery life, data usage, disruptions and connectivity. Enables the user to recognise patterns of usage and potentially pre-empt issues before they arise. The full suite includes access to the core dashboard as well as the Smart Battery Monitor dashboard, and APIs.



SKU	Description
CF-LESPSESS1	Smart Essentials Bundle - 1 year (Smart Service, Battery Monitor and APIs)
CF-LESPSESS3	Smart Essentials Bundle - 3 year (Smart Service, Battery Monitor and APIs)
CF-LESPSESS5	Smart Essentials Bundle - 5 year (Smart Service, Battery Monitor and APIs)

## Smart Battery Monitor

Smart Battery Monitor gives users real time insight into battery usage and health in detail cross an estate of devices. It focuses on battery serial numbers and allows the user to track, identify and replace batteries before they impact productivity. Alerts can also be set up.



SKU	Description
CF-LESPBAEE1	1 Year Smart Battery Monitor (Elemesz Battery Essentials)
CF-LESPBAEE3	3 Year Smart Battery Monitor (Elemesz Battery Essentials)
CF-LESPBAEE5	5 Year Smart Battery Monitor (Elemesz Battery Essentials)

## SOFTWARE SOLUTION PARTNERS

### **ABSOLUTE**<sup>®</sup>

#### Cyber Resilience

Absolute is the industry benchmark in endpoint resilience. It ensures customers' digital operations and mobile workforces stay efficient, productive, and safe using innovative [Secure Endpoint](#) and [Secure Access](#) products—leveraging the advantage of pioneering Absolute Persistence<sup>®</sup> technology embedded in the firmware of more than 600,000,000 devices. Once activated, Absolute Persistence is fiercely and uniquely resilient, surviving attempts to disable it, even if the device is re-imaged, the hard drive is replaced, or the firmware is updated. **No other technology can do this.**

Contact your sales rep for part numbers.

Website: <https://www.absolute.com/partners/device-compatibility/#panasonic>

### **SOTI**<sup>®</sup>

#### Enterprise Mobility Management

Part of the [SOTI ONE Platform](#), SOTI MobiControl is the Enterprise Mobility Management (EMM) solution designed for any device, any form factor, and any operating system (OS). Deploy apps to smartphones. Enroll and provision new tablets in the field. Track the location of rugged devices. Identify and neutralize security risks to the IoT endpoints. Protect critical data stored on mobile devices. Minimize device downtime so field workers stay productive.

Contact your sales rep for part numbers.

Website: <https://www.soti.net/products/soti-mobicontrol/>



#### Sygic

Sygic Professional GPS Navigation works offline and features truck specific routing, itinerary with time windows and over 60 APIs for development with Android and Windows based apps. Sygic technology is accessible through a complete set of SDKs for web and mobile development. During Sygic's 18-year experience, we developed countless mapping and navigation solutions for 3000+ integration partners and customers in various industries.

Contact your sales rep for part numbers.

Website: <https://www.sygic.com/enterprise/professional-gps-navigation-sdk>

## ACCESSORY SUMMARY

Solution Type	Part Number	Description
Left Expansion Area	FZ-V2S400T2U	OPAL 512 GB 2 <sup>nd</sup> SSD (NVMe)
	FZ-V2S401T2U	OPAL 1TB 2 <sup>nd</sup> SSD (NVMe)
	FZ-V2S402T2U	OPAL 2TB 2 <sup>nd</sup> SSD (NVMe)
	FZ-VDM401AU	DVD Multi Drive
	FZ-VBD401AU	Blu-ray Disc Drive
	FZ-VSC402U	Smart Card Reader
Right Expansion Area	FZ-VSC401U	Smart Card Reader
	FZ-VZSU1XU	Battery Pack
Rear Expansion Area	FZ-VCN401U	VGA x1, Serial x1, 2 <sup>nd</sup> Gigabit LAN x1
	FZ-VCN402U	Serial x1, USB 3.1 Type A x1, 2 <sup>nd</sup> HDMI 2.0 x1
	FZ-VCN403U	USB 3.1 Type A x1, 2 <sup>nd</sup> HDMI 2.0 x1
	FZ-VCN405G	Serial x2, 2 <sup>nd</sup> Gigabit LAN x1
	FZ-VCN406U	HDMI x1, USB-C x1, USB-A x1
Palm Rest Expansion	FZ-VNF401BU	Contactless Smart Card Reader (HF-RFID)
	FZ-VFP401BU	Fingerprint Reader (Windows Hello)
	FZ-VFP402BW	Fingerprint Reader (Windows Hello, Multi User Authentication)
RAM Modules	FZ-BAZ2316	16 GB RAM DDR5
	FZ-BAZ2332	32GB RAM DDR5
Docking Solutions	FZ-VEB401U	TOUGHBOOK 40 Desktop Port Replicator
	TB-GJ-VD40* FPNR / FPQR / LPNR / LPQR	TOUGHBOOK 40 Vehicle Dock (Gamber-Johnson)
	TB-GJ-VC40NR	TOUGHBOOK 40 Vehicle Dock (Gamber-Johnson), no Electronics
	PCPE-HAV40* 02/03/04/05	TOUGHBOOK 40 Vehicle Dock (Havis)
	PCPE-HAV4001	TOUGHBOOK 40 Vehicle Dock (Havis), no Electronicx
	Carry Solutions	PCPE-SYSSSB1
FZ-VNS401U		Shoulder Strap with D-Rings
Power Management	FZ-VZSU1XU	Battery Pack
	FZ-VCB551W	4-bay Battery Charger
	CF-AA5713A2*	AC Adaptor (*E: UK; G: Continental; T: Italian ; D: Swiss
	CF-LND1224A	Auto Adaptor (120W)
Productivity	FZ-VNP401U	TOUGHBOOK 40 Touch Screen Stylus Pen
	FZ-VNT005U	Stylus Tether
	PCPE-INFUVA2	Toughmate Stylus tether
	PCPE-LOGM901	USB Optical Mouse
Connectivity	PCPE-CRD90E1	Cradlepoint IBR900 router with 1-year NetCloud Mobile Essentials
	PCPE-CRD90E3	Cradlepoint IBR900 router with 3-year NetCloud Mobile Essentials
	PCPE-CRD90E5	Cradlepoint IBR900 router with 5-year NetCloud Mobile Essentials
	PCPE-CRD90A1	Cradlepoint IBR900 router with 1-year NetCloud Mobile Advanced
	PCPE-CRD90A3	Cradlepoint IBR900 router with 3-year NetCloud Mobile Advanced
	PCPE-CRD90A5	Cradlepoint IBR900 router with 5-year NetCloud Mobile Advanced

All technical specifications are subject to change without notice.

## ACCESSORY SUMMARY

Solution Type	Part Number	Description
<b>Security, Protection &amp; Cleaning</b>	PCPE-KENLOK2	Kensington Lock
	CF-VPF39U	Protective Film for 14" LCD
	CF-VNC002U	LCD Cleaning Cloth (MOQ: 10pcs)
<b>Optical Drive</b>	PCPE-FCDVR05	USB External CD-DVD Drive
<b>Professional Services</b>	PCPE-PSBIOSG	Custom BIOS Service – Gold
	PCPE-PS20GIM	Image deployment per device (MOQ 30)
	PCPE-PSSIMIN	SIM Installation
	PCPE-PSATAG1	Asset Tagging
	PCPE-PSATAGB	Information Management Bundle
	PCPE-PSAUTOP	Autopilot Enrolment
	PCPE-PSLOGOB	Custom logo badge
	PCPE-PSSPACK	Solution Packaging
	PCPE-PSCDL01	Customised Deployment / Logistics
	PCPE-PSBTM01	Bespoke Training Material
<b>Smart Services</b>	CF-LESPSESS1	Smart Essentials Bundle - 1 year (Smart Service, Battery Monitor and APIs)
	CF-LESPSESS3	Smart Essentials Bundle - 3 year (Smart Service, Battery Monitor and APIs)
	CF-LESPSESS5	Smart Essentials Bundle - 5 year (Smart Service, Battery Monitor and APIs)
	CF-LESPBAEE1	1 Year Smart Battery Monitor (Elemesz Battery Essentials)
	CF-LESPBAEE3	3 Year Smart Battery Monitor (Elemesz Battery Essentials)
	CF-LESPBAEE5	5 Year Smart Battery Monitor (Elemesz Battery Essentials)
<b>Lifecycle support solutions</b>	PCPE-PROTP3	TOUGHBOOK ProTect PLUS 3 Years (Incl. 3 yr Battery Confidence)
	PCPE-PROTP4	TOUGHBOOK ProTect PLUS 4 Years (Incl. 3 yr Battery Confidence)
	PCPE-PROTP5	TOUGHBOOK ProTect PLUS 5 Years (Incl. 3 yr Battery Confidence)
	PCPE-INFAB3	TOUGHBOOK Infinity 3 Years (Incl. 3 yr Battery Confidence)
	PCPE-INFAB4	TOUGHBOOK Infinity 4 Years (Incl. 3 yr Battery Confidence)
	PCPE-INFAB5	TOUGHBOOK Infinity 5 Years (Incl. 3 yr Battery Confidence)

Panasonic and TOUGHBOOK are brand names and registered trademarks of Panasonic Corporation. Intel, the Intel logo, Intel Core, Intel vPro, Core Inside and vPro Inside are trademarks of Intel Corporation in the U.S. and other countries. Microsoft® and Windows® are registered trademarks of Microsoft® Corporation of the United States and/or other countries. All other brand names shown are the registered trademarks of the relevant companies. All rights reserved.

Mobile Solutions Business Division – Europe (MSBDEU), Panasonic Connect Europe GmbH, Hagenauer Straße 43, D-65203 Wiesbaden (Germany).