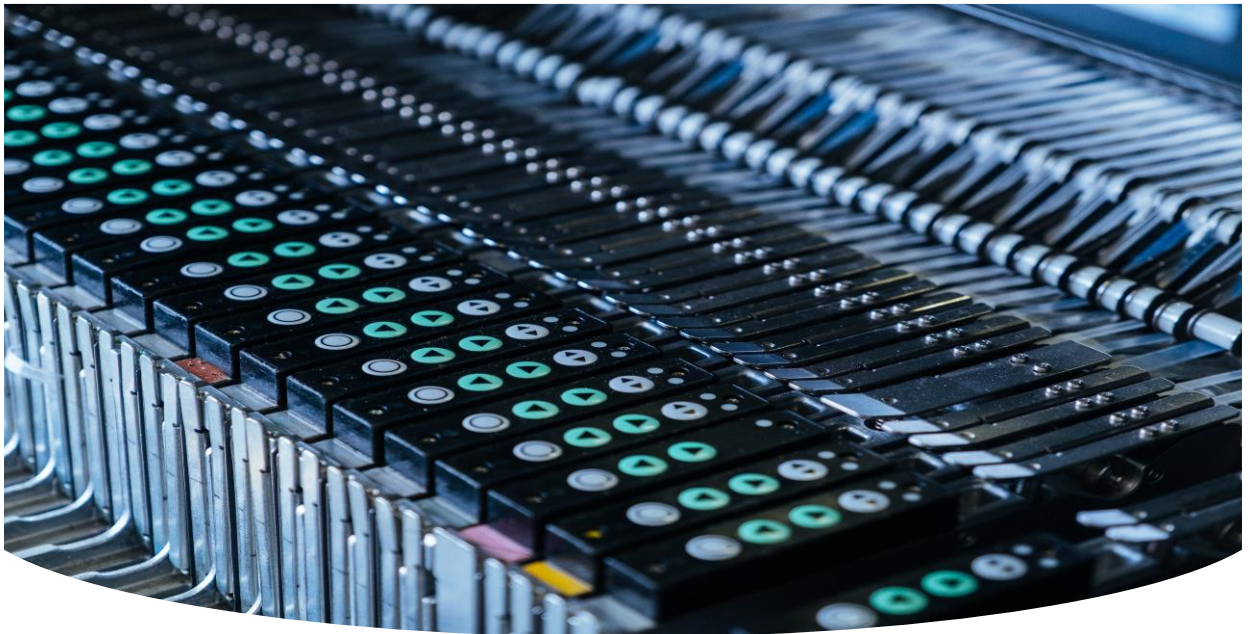


New Service Package: FEEDER LIFETIME EXPANSION



Maintenance for Excellence

Panasonic offers a comprehensive range of component feeders – all designed to be compatible with SMT machine generations from Y2003. These feeders are built to deliver high feeding precision and minimal downtime. While they are not the most inexpensive option on the market, they might be the most robust feeders available. But even the strongest ones require routine service. Mainly this is cleaning of the feeding mechanism and inspection of the parts. For customers no adjustments need to be made. However, after many millions of placements few parts might be worn or by incident a feeder has been broken. For those cases Panasonic offers a repair service from their Technical Center in Budapest/Hungary. There are sprockets or motors are changed, and a re-calibration takes place to be ready for even the smallest components to feed with highest accuracy.

Benefits of our Programme:

- ✓ Prolong lifetime of the feeder.
- ✓ Repair of broken feeders
- ✓ Measurement of motor torque and feeding accuracy
- ✓ Calibration of the feeder
- ✓ Service of door-to-door delivery
- ✓ Finally, this service offers high quality repairs at accountable repair cost.

Your Value with Panasonic

The placement systems from Panasonic are used in all kinds of industries such as EMS, Automotive and Industrial applications. Thanks to their robust construction they are made for use over long periods. As Customer expectations are the same no matter whether machine or feeder or the relevant software to run the production lines on highest level. They expect a lifetime of equipment for 10-20 years in a 24/7 environment.

Panasonic DNA is to fulfill these demands with all aspects.

Included in our Service Package

- Full mechanical health check and firmware upgrade to latest version.
- Motor-Torque and feeding accuracy check
- All work carried out according to Panasonic's high manufacturing standards.
- 180-day warranty including parts, labour and logistics.
- Replacement of parts if the result of the inspection justifies it.

Finally, customers receive well maintained and calibrated feeders back.



Contact us:
For more information,
please contact your local
service coordinator.

Our Technical Center

Panasonic officially opened in Budapest its newest European Service Centre in 2022. It is designed to support customer service and repair requirements on mainland Europe with an expanded range of services such as training and repairs.

- Area: around 1500 m²
- A 30-strong Factory Solutions team supports the assembly and testing of products and solutions
- Connected to a strong technical talent pool being developed by the regional universities
- Fast & efficient logistics for collections & returns.



Panasonic Factory Solutions Europe
Budapest Service Centre Alíz Utca 3,
H-1117 Budapest