

TOUGHBOOK



# ENGINEERED FOR MOTION

TOUGHBOOK

**56** The new benchmark for next-gen field service

As field service demands evolve, your mobile tech must keep pace.



**10Gb LAN**

High-speed connectivity for data-intensive field operations



**Ergo Grip Handle**

Comfortable carry handle for all-day mobility



**Auto Touch Mode**

Adaptive touchscreen for smooth use in the field



# The changing nature of field service

Whether maintaining telecoms networks, inspecting utilities infrastructure, repairing vehicles, or managing complex facilities, field service teams are now operating in environments that demand greater speed, accuracy, and resilience than ever before.

Increasing data volumes, more sophisticated diagnostic tools, and rising expectations around real-time reporting mean that technicians must capture, analyse, and act on information instantly – often while working in remote, harsh, or highly dynamic conditions.

At the same time, the rise of AI-driven workloads is reshaping frontline operations, creating a growing need for edge-computing capabilities.

As these demands intensify, mobile devices must evolve to keep pace. Technicians need tools that not only survive challenging field environments but actively enhance productivity by reducing workflow friction, supporting modern and legacy equipment, and ensuring uninterrupted access to critical data.



**TOUGHBOOK**

# 56

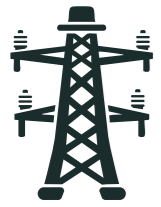
**Ergonomically engineered for teams who move fast and work anywhere**

Building on 30 years of experience leading the way with rugged devices for mobile workers, TOUGHBOOK 56 is the next step in delivering power and performance in the field.

Representing an ergonomic leap, the lightweight TOUGHBOOK 56 makes fieldwork easier and more comfortable with a range of new design features to improve portability, performance, and ease of operation.

**In an era where downtime carries significant operational and financial consequences, TOUGHBOOK 56 is made for the technological and environmental challenge of field service across the following sectors:**





# Utilities and telecommunications

Field technicians across utilities and telecommunications operate in demanding, data-intensive environments where rapid diagnostics, high-volume data transfer, and real-time insight are essential for keeping critical infrastructure running.

To stay productive, technicians need uninterrupted connectivity, long-lasting power, and rugged hardware that can deliver high bandwidth, powerful on-device processing, intelligent automation support, and all-day durability.

## TOUGHBOOK

# 56 is made for the challenge



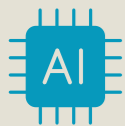
**10GB LAN port** for rapid optical fibre testing, high-volume firmware updates, and fast transfer of operational sensor data.



**High-performance CPU** enabling simultaneous acquisition, diagnostics, geoprocessing, and reporting, even in remote areas.



**Standalone 5GSA module** providing stable, low-latency connectivity for streaming data, accessing digital twins, and remote assistance.



**AI-ready processing** supporting on-site anomaly detection, predictive maintenance, and automated infrastructure analysis.





# Automotive repair and R&D testing

Technicians and engineers in vehicle repair centres and R&D environments face increasingly complex diagnostic workloads that demand seamless simultaneous connectivity to systems and a wide mix of legacy and next-generation equipment.

Today's mobile devices have to adapt to multiple tools and setups, provide reliable power through extended test cycles, and present complex schematics and dashboards with crisp, usable clarity, even when conditions are far from ideal.

## TOUGHBOOK

# 56

is made for the challenge



**Larger screen with unchanged footprint** provides clearer visibility of schematics, wiring diagrams, dashboards, and diagnostic interfaces.



**Legacy port compatibility** ensures seamless use of established diagnostic tools, calibration systems, and legacy systems without workaround costs.



**Up to 3x LAN ports** enable diagnosis via separate network channels or parallel operations, reducing workflow disruption and saving time.



**High-performance CPU** accelerates software flashing, ECU interrogation, diagnostic scans, and R&D simulations for higher throughput and faster cycles.



# Inspection and maintenance

Technicians working on field maintenance and certification face long multi-site shifts, and the need to work seamlessly with both legacy and modern equipment, often in challenging environments. This demands strong wireless performance, expandable storage, and the power and performance to keep essential applications running throughout demanding field cycles.

As workflows grow more complex and security expectations rise, they require technology that's durable and provides reliable access to compliance tools, regulatory data, and maintenance histories.

## TOUGHBOOK

# 56 is made for the challenge



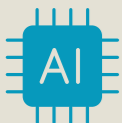
**Dedicated 10GB LAN port** provides fast and reliable transfer of field data such as sensor outputs, drone footage, or LiDAR files.



**5GSA modules** enable real-time dispatching, remote maintenance, and instant data synchronisation.



**High performance CPU and optional dGPU** enable faster modelling, mapping, 3D rendering and multi-task processing in the field.



**AI-readiness** prepares for current and next-generation AI-driven surveying tools, with point-cloud processing on site to increase operational efficiency.



# Engineered for motion across field service

While each sector faces its own specific operational and environmental challenges, they all rely on the same core expectations from mobile technology in the field.

Devices need to stay reliable in harsh conditions, connect smoothly to both legacy and modern tools, support more data and AI-driven tasks, and simplify day-to-day workflows so technicians can focus on doing the work, not fighting the equipment.

TOUGHBOOK

## 56 is made for the challenge



**New Ergo Design** features blend comfort and practicality, making it easier for technicians moving between sites, vehicles, workshops, or field assets.



**Long battery life** ensures uninterrupted productivity and enabling full-day operations, without needing to recharge.



**Rugged design** withstands drops, vibration, dust, mud, and adverse weather, ensuring dependable performance wherever teams are working.



**Auto-mode Touch Screen** automatically adapts to touch, gloves, or stylus use, allowing seamless interaction without manual mode switching.

# Work fast. Work anywhere.

TOUGHBOOK

# 56

TOUGHBOOK 56 is purpose-built for the evolving demands of modern field service. With its new ergonomic design, powerful AI processing capabilities, and adaptable high-speed connectivity, it provides a best-in-class balance between ruggedness, mobility and performance, ensuring teams can stay productive and work fast from anywhere.

Auto Touch Mode

14-inch WUXGA

Integrated 5G SA module

High-performance CPU and dGPU

AI-reading processing

Rugged design

Ergo Grip Latch

Ergo Grip Handle

Ergo Grip Edge

Up to 3 LAN ports (1GB, 2.5GB, 10GB)

Legacy port compatibility

Extended battery runtime



TOUGHBOOK



# Ready to see how TOUGHBOOK 56 transforms real-world field operations?

Visit the TOUGHBOOK page to learn more about how teams across utilities, telecoms, automotive, and facilities management are using TOUGHBOOK devices to work faster and more effectively.

You can also connect directly with our device specialists to discuss your operational needs and see how TOUGHBOOK 56 can support your frontline teams.

