



IT/IP Centric Live Video Processing Platform

AT-KC100

IT/IP Platform "KAIROS" achieves higher performance by fully utilizing the power and flexibility of its CPU and GPU, balancing total processing load without the configuration constraints of traditional hardware based systems. KAIROS offers unrestricted flexibility of input, output and operation for efficient production of expressive live videos.

Key Features

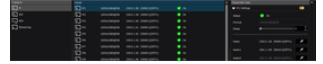
A variety of inputs and outputs available for use

Resolution and format independent

Layered structure for versatile video expression

Flexibility and scalability

User-friendly interface



AT-KC100

<https://eu.connect.panasonic.com/tr/en/products/broadcast-proav/kc100>

General

Power Requirement AC 100 V - 240 V, 50 Hz/60 Hz, 8 A - 4 A
(Redundant)

Operating Humidity 5 to 35 degree Celsius

Weight 10% to 90% (no condensation)

Dimensions (H x W x D) Approx. 10.6 kg / 23.36 lb (body only)

Video/Audio/Synchronous

Support Video Format

4K 2160/60p, 59.94p, 50p, 30p, 29.97p, 25p, 24p, 23.98p(Kairos Core 100 requires AT-SF001 4K option)

FHD 1080/60p, 59.94p, 50p, 30p, 29.97p, 25p, 24p, 23.98p1080/59.94i, 50i

HD 720/60p, 59.94p, 50p

Signal Processing Y/Pb/Pr: 4:2:2 10 bit

Audio Format

ST 2110-30 (AES67) 48 KHz/24 bit

Synchronous

PTP Sync Support for QSFP and GbE port

FS (Frame Synchronize) For each CH, always ON (can't turn off)

Frame Delay 0 frame to 12 frame, 1 frame step

LAN RJ-45 x 2, 1GbE (Control system, PTP sync, NDI®, RTP/SRT/RTMP/RTSP)

I/O Specification

IP

QSFP QSFP28 x 2, 100GbE (ST 2110, PTP sync)

Baseband

Gateway Port Custom Interface Connectors x 8, for Deltacast FLEX modules

DisplayPort DisplayPort 1.4 x 2, for Multiview output

SDI 12G-SDI, 3G-SDI x 3, Use of recommended products*

3G-SDI x 4, Use of recommended products*

HDMI HDMI 2.0 x 1, Use of recommended products*

DisplayPort * DisplayPort 1.2 x 1, Use of recommended products*